

SunSun CTF-1600B

SunSun CTF-1600B SuperECO Pond Pump Instruction Manual

Model: CTF-1600B

1. INTRODUCTION

Thank you for choosing the SunSun CTF-1600B SuperECO Pond Pump. This pump is designed for efficient water circulation in garden ponds, fountains, and large aquariums, offering high performance with low energy consumption. Please read this manual carefully before installation and operation to ensure safe and optimal use of your product.



The SunSun CTF-1600B SuperECO Pond Pump submerged in a pond, demonstrating its typical installation connected to a filtration system.

Key Features:

- Maximum flow rate of 16000 liters per hour (l/h).
- Power consumption of 140 Watts.
- Maximum pumping height of 7.5 meters.
- Capable of handling dirt particles up to 6 mm.
- Equipped with a durable ceramic shaft motor for wear and corrosion resistance.
- Suitable for both fresh and saltwater applications.
- Includes a 10-meter power cable.

Amplia variedad de aplicaciones



Estanques de jardín



Fuentes



Acuarios de gran tamaño



Arroyos artificiales

Visual examples of the pump's versatile applications, including garden ponds, fountains, large aquariums, and artificial streams.

2. SAFETY INSTRUCTIONS

Always follow these safety guidelines to prevent injury or damage to the product:

- **Read all instructions:** Before operating the pump, read and understand all safety and operating instructions.
- **Electrical Safety:** Ensure the power supply matches the voltage specified on the pump's label. Always connect the pump to a grounded outlet. Do not operate the pump if the power cord or plug is damaged.
- **Water Immersion:** This pump is designed for submersible use only. Never operate the pump dry.
- **Children and Pets:** Keep children and pets away from the pump and pond area during operation and maintenance.
- **Maintenance:** Always disconnect the power supply before performing any maintenance, cleaning, or assembly tasks.
- **Temperature Range:** The pump is designed to operate in water temperatures between 4°C and 35°C.
- **Handling:** Do not lift or carry the pump by its power cord.

- **Modifications:** Do not attempt to modify the pump or its components. Use only original spare parts.

Bomba de estanque de bajo consumo

Temperatura del agua: 4 °C - 35°C

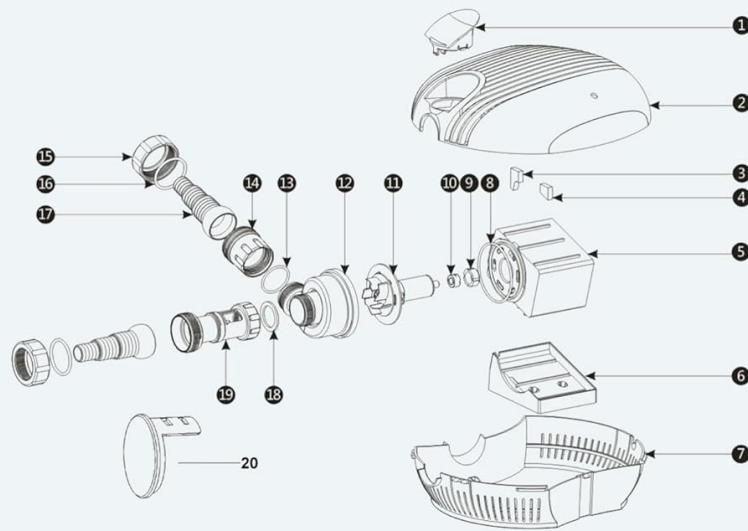


The pond pump shown with a skimmer attachment. **Important: This device can only be used in water!**

3. SETUP AND INSTALLATION

Follow these steps to properly set up your SunSun CTF-1600B pond pump:

1. **Unpacking:** Carefully remove all components from the packaging. Inspect for any damage.
2. **Hose Connection:** Attach the appropriate hose connector (25mm, 33mm, or 38mm) to the pump's outlet. Ensure a secure fit to prevent leaks.
3. **Placement:** Place the pump fully submerged in the pond. Ensure it rests on a stable, level surface, away from excessive sludge or debris that could block the intake. The pump is designed to move dirt particles up to 6mm, but excessive blockage can reduce efficiency.
4. **Skimmer Connection (Optional):** If using a skimmer, connect it to the designated inlet on the pump as shown in the diagram.
5. **Power Connection:** Once the pump is securely placed and all connections are made, plug the 10-meter power cable into a grounded electrical outlet.



CTF-16000

1	Tapa superior azul	2	Parte superior de la carcasa	3	Soporte
4	Soporte	5	Motor	6	Soporte de bomba
7	Parte inferior de la carcasa	8	Junta tórica 1	9	Tapa del rodamiento
10	Rodamiento	11	Rotor	12	Cubierta del rotor
13	Junta tórica 2	14	Brida 1	15	Anillo roscado
16	Junta tórica 3	17	Salida	18	Junta tórica 4
19	Brida 2	20	Tapa lateral azul		

A detailed exploded diagram of the CTF-16000 pump, showing all individual components and their corresponding numbers, along with a table listing each part's name for assembly and maintenance reference.

CTF-16000 Parts List

No.	Part Name	No.	Part Name
1	Blue Top Cover	2	Upper Casing Part
3	Support	4	Support
5	Motor	6	Pump Support
7	Lower Casing Part	8	O-ring 1
9	Bearing Cover	10	Bearing
11	Rotor	12	Rotor Cover
13	O-ring 2	14	Flange 1
15	Threaded Ring	16	O-ring 3
17	Outlet	18	O-ring 4

No.	Part Name	No.	Part Name
19	Flange 2	20	Blue Side Cover

4. OPERATING INSTRUCTIONS

Operating the SunSun CTF-1600B pump is straightforward:

1. **Initial Start-up:** After ensuring the pump is fully submerged and connected, plug it into the power outlet. The pump will start automatically.
2. **Monitoring:** Observe the water flow to ensure proper operation. The pump is designed for continuous operation.
3. **Shut-down:** To turn off the pump, simply unplug it from the power outlet.
4. **Flow Adjustment:** This model does not feature adjustable flow control. The pump operates at its maximum flow rate of 16000 l/h.

Potente motor con eje cerámico



Resistente al desgaste
Apta para agua salada



Libre de cobre
Resistente a la corrosión

An internal view highlighting the durable ceramic shaft motor, designed for wear resistance, suitability for saltwater, and corrosion-free operation.

5. MAINTENANCE

Regular maintenance ensures the longevity and efficiency of your pump:

1. **Disconnect Power:** Always unplug the pump from the power source before any maintenance.
2. **Casing Cleaning:** Periodically remove the pump from the water and clean the outer casing to remove accumulated debris.
3. **Impeller Access:** To clean the impeller, carefully open the pump casing. This typically involves unscrewing the retaining screws.

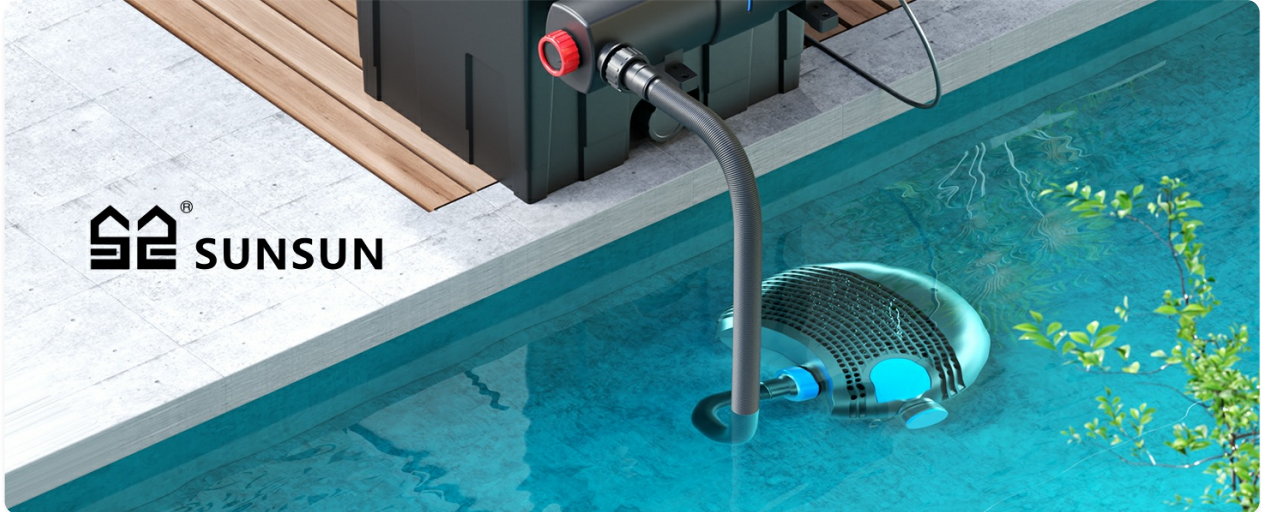


Illustration of how to access the internal components of the pump by unscrewing the casing, a necessary step for cleaning and inspection.

4. **Impeller Cleaning:** Remove the impeller and clean it thoroughly with a soft brush under running water. Ensure no debris is lodged in the impeller blades or the motor housing.



Demonstration of cleaning the pump's impeller and motor housing with a brush to remove debris and maintain optimal performance.

5. **Reassembly:** Reassemble the pump in reverse order, ensuring all seals and O-rings are correctly seated to prevent water ingress.
6. **Winterization:** During freezing temperatures, remove the pump from the pond, clean it thoroughly, and store it in a frost-free location.



An image showing disassembled pump parts, including the impeller and housing, being thoroughly cleaned with a brush under running water to ensure longevity and efficiency.

6. TROUBLESHOOTING

If you encounter issues with your pump, refer to the following common problems and solutions:

Problem	Possible Cause	Solution
Pump does not start	No power supply Impeller blocked Damaged motor	Check power connection and outlet Disconnect power and clean impeller Contact customer support
Reduced water flow	Clogged intake or hose Impeller partially blocked Excessive head height	Clean intake screen and hose Disconnect power and clean impeller Ensure pump is not exceeding its maximum head
Pump makes unusual noise	Debris in impeller Worn bearings Operating dry	Disconnect power and clean impeller Contact customer support Ensure pump is fully submerged
Water leakage	Loose hose connection Damaged O-rings/seals	Tighten hose connections Inspect and replace O-rings/seals if necessary

7. SPECIFICATIONS

Detailed technical specifications for the SunSun CTF-1600B SuperECO Pond Pump:

- **Model Number:** 50356
- **Brand:** SunSun
- **Material:** Plastic
- **Color:** Black, Blue
- **Dimensions (L x W x H):** 30.7 cm x 22.9 cm x 10.2 cm
- **Weight:** 4.7 Kilograms
- **Power Source:** Corded Electric
- **Maximum Flow Rate:** 16000 Liters per hour
- **Power Consumption:** 140 Watts
- **Maximum Pumping Height:** 7.5 meters

- **Particle Size Handling:** Up to 6 mm
- **Hose Connection:** 25 / 33 / 38mm (~1-1 1/2 inches)
- **Cable Length:** 10 meters
- **IP Rating:** IPX8 (Suitable for continuous submersion up to 2m)
- **Operating Temperature:** 4°C - 35°C

Detalles del producto



Código IP
IPX8



Profundidad máx. de inmersión
2 m



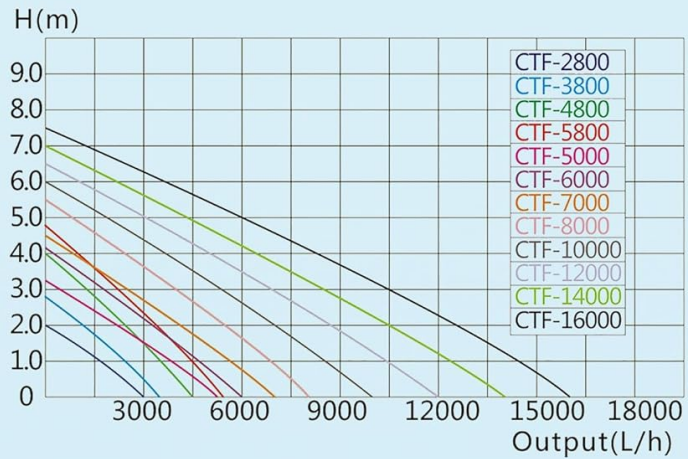
Ø 25 mm

Ø 30 mm

Ø 38 mm

Detailed product view showing the pump's dimensions (400mm length, 353mm width, 170mm height) and its IPX8 waterproof rating, indicating suitability for continuous submersion up to 2 meters.

Caudal alto y altura de salida elevada



Altura máx. de salida

7,5 m

Caudal

16000 l/h

Potencia

140 W

Código IP

IPX8

A graph illustrating the relationship between pump head (H in meters) and output flow rate (L/h) for various CTF series models, including the CTF-1600B, indicating its maximum head of 7.5m and flow of 16000 l/h.

8. WARRANTY AND SUPPORT

For warranty information and customer support, please refer to the documentation provided with your purchase or contact your retailer. Keep your proof of purchase for any warranty claims.

For technical assistance or inquiries, please visit the official SunSun website or contact their customer service department.