

## Manuals+

[Q & A](#) | [Deep Search](#) | [Upload](#)

manuals.plus /

- › [Lechuza](#) /
- › [Lechuza 15683 Balconera Color 80 Self-Watering Planter Instruction Manual](#)

## Lechuza 15683

# Lechuza Balconera Color 80 Self-Watering Planter Instruction Manual

Model: 15683 | Brand: Lechuza

## INTRODUCTION

The Lechuza Balconera Color 80 is a versatile self-watering planter designed to enhance your indoor and outdoor spaces. Its innovative design simplifies plant care by providing a consistent water supply, reducing the frequency of watering. This manual provides detailed instructions for setting up, operating, and maintaining your Balconera Color 80 planter to ensure optimal plant health and longevity.

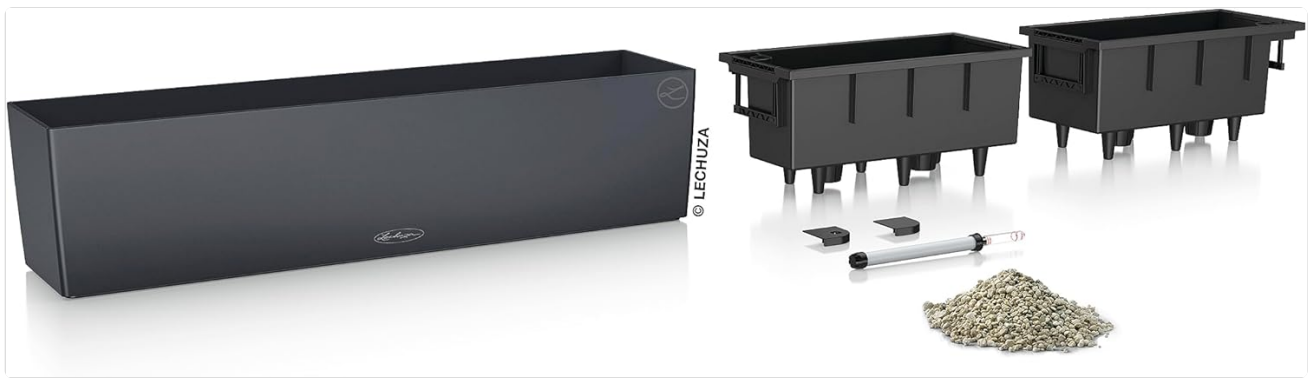


Image: The Lechuza Balconera Color 80 planter in Slate Matte, showcasing its sleek design.

## SETUP GUIDE

Follow these steps to set up your Lechuza Balconera Color 80 planter:

- Unpack Components:** Carefully remove all components from the packaging. You should have the outer planter, two inner liners, the water-level indicator, and a bag of LECHUZA-PON plant substrate.



*Image: All components of the Balconera Color 80 planter, including the outer shell, two inner liners, water-level indicator, and LECHUZA-PON.*

2. **Prepare the Inner Liners:** Each inner liner is equipped with LECHUZA's signature water reservoir system. Ensure the wicks are properly inserted into the bottom of the liners.
3. **Add LECHUZA-PON:** Distribute the provided LECHUZA-PON substrate evenly at the bottom of each inner liner. This inorganic granulate separates the potting soil from the water reservoir, aerates the roots, and helps regulate water supply.
4. **Planting:** Place your plants into the inner liners, filling around them with your preferred potting soil. Ensure the plant roots are in contact with the LECHUZA-PON layer for effective wicking.
5. **Insert Liners:** Once planted, carefully lower the inner liners into the outer planter. The Balconera's design allows for easy insertion and removal of the liners, simplifying the planting process.
6. **Initial Watering:** Water your plants from the top as you normally would for the first 12 weeks. This allows the plant roots to grow sufficiently into the LECHUZA-PON layer and reach the water reservoir.
7. **Outdoor Use (Drainage Plug):** For outdoor use, remove the drainage plug located at the bottom of the planter. This prevents waterlogging during heavy rainfall by allowing excess water to drain. For indoor use, keep the drainage plug in place.

## BALCONERA Color 80

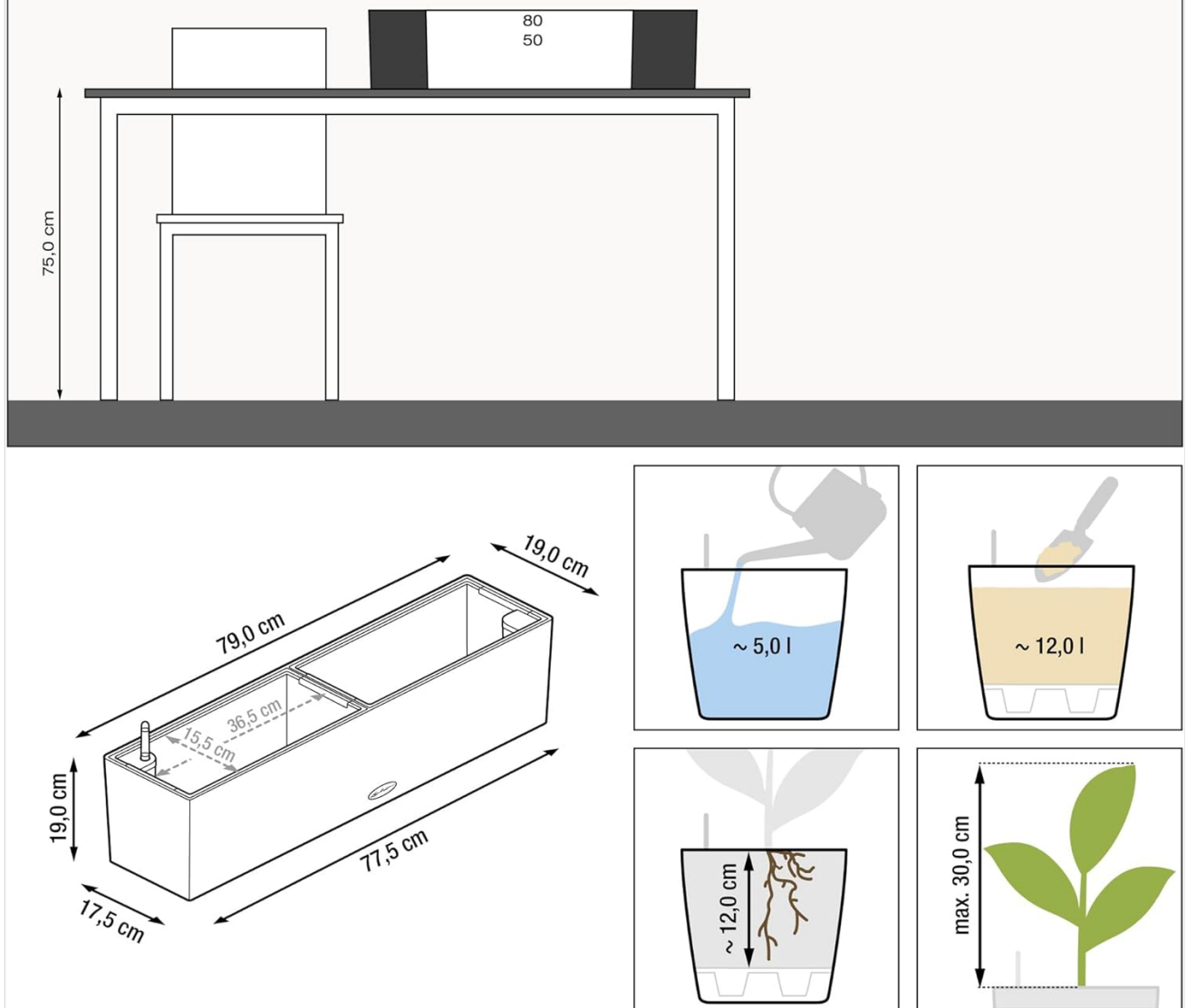


Image: A diagram illustrating the dimensions of the Balconera Color 80 and key setup steps, including water capacity and recommended plant height.

### OPERATING INSTRUCTIONS

The Balconera Color 80 features a self-watering system that provides plants with water as needed, extending the time between watering. This system is designed to take the guesswork out of plant care.

- **Water Reservoir:** After the initial 12-week top-watering period, you can begin to fill the water reservoir. Pour water directly into the designated filling shaft until the water-level indicator reaches the 'MAX' mark.
- **Water-Level Indicator:** The integrated water-level indicator allows you to easily monitor the reservoir's water level. When the indicator drops to the 'MIN' mark, it's time to refill the reservoir.



Image: A detailed diagram illustrating the Lechuza self-watering system, showing how water is drawn from the reservoir to the plant roots.

- **Watering Frequency:** The frequency of refilling depends on the plant type, size, and environmental conditions (temperature, humidity, sunlight). The water-level indicator will be your guide.
- **Nutrient Supply:** LECHUZA-PON provides some initial nutrients. For long-term plant health, add liquid fertilizer to the water reservoir as recommended for your specific plants.





Image: Lechuza Balconera Color 80 planters beautifully arranged on a balcony, demonstrating their aesthetic appeal and practical use.

## MAINTENANCE

---

Proper maintenance will ensure the longevity of your planter and the health of your plants.

- **Cleaning:** The planter can be cleaned with a soft cloth and mild detergent. Avoid abrasive cleaners that may damage the matte finish. The inner liners can be easily removed for thorough cleaning.
- **Drainage Plug:** Regularly check the drainage plug if used outdoors to ensure it is clear of debris and functioning correctly to prevent water accumulation.
- **LECHUZA-PON Refresh:** Over time, the LECHUZA-PON may need to be refreshed or replaced, especially if you notice a decrease in the self-watering system's efficiency or if the plants are not thriving. This typically occurs after several years of use.
- **Winter Care (Outdoor):** If used outdoors in freezing climates, ensure the water reservoir is empty during winter to prevent ice expansion from damaging the planter.

## TROUBLESHOOTING

---

Here are some common issues and their solutions:

- **Plant Wilting/Yellowing (Overwatering):** If plants show signs of overwatering (e.g., yellowing leaves, soft stems), ensure the drainage plug is removed for outdoor use. For indoor plants, check that the water reservoir is not constantly full, allowing for a dry period between refills.
- **Plant Wilting (Underwatering):** If the water-level indicator is at 'MIN' and plants are wilting, refill the reservoir. If the problem persists, ensure the plant roots have adequately grown into the LECHUZA-PON layer.
- **Water-Level Indicator Not Moving:** Check for obstructions in the water filling shaft or within the reservoir. Ensure the indicator float moves freely.
- **Algae Growth in Reservoir:** Algae can sometimes grow in the water reservoir, especially in sunny conditions. This is

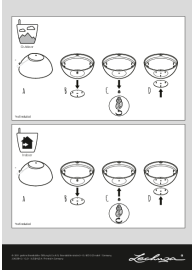
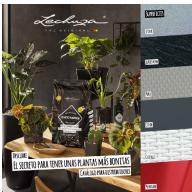

generally harmless but can be cleaned by emptying and rinsing the reservoir during plant repotting or maintenance.

## SPECIFICATIONS

Feature	Detail
Brand	Lechuza
Model Number	15683
Material	Plastic
Color	Slate Matte
Product Dimensions	32"D x 8"W x 8"H
Capacity	12 Liters
Item Weight	10.08 pounds (4.58 Kilograms)
Indoor/Outdoor Usage	Indoor, Outdoor
Special Feature	Drainage Hole
Included Components	Balconera Color 80 - All-In-One Slate (matte smooth)

© 2024 Lechuza. All rights reserved.

## Related Documents - 15683

	<p><a href="#">LECHUZA BOLA Hanging Basket Assembly and Safety Guide</a></p> <p>Detailed instructions for assembling and safely installing LECHUZA BOLA 23 and BOLA 32 hanging planters. Includes general advice, maintenance tips, and weight limits.</p>
	<p><a href="#">Catálogo LECHUZA: Descubre el Secreto para Plantas Más Bonitas y Diseño Alemán</a></p> <p>Explora el catálogo de LECHUZA, líder en macetas de diseño y sistemas de riego inteligentes. Descubre productos sostenibles, 'Made in Germany', para un cuidado óptimo de tus plantas en interiores y exteriores.</p>
	<p><a href="#">Vasi Lechuza PALO Natural Wood: Legno di Eucalipto Premium con Sistema di Irrigazione Integrato</a></p> <p>Scopri i vasi Lechuza PALO Natural Wood, realizzati in pregiato legno di eucalipto con un intelligente sistema di irrigazione integrato per una cura delle piante senza sforzo. Certificati FSC® e con inserto in plastica riciclata al 100%.</p>

