

Manuals+

[Q & A](#) | [Deep Search](#) | [Upload](#)

manuals.plus /

- › [Rain-X](#) /
- › [Rain-X Windshield Repair Kit User Manual](#)

Rain-X 600001

Rain-X Windshield Repair Kit User Manual

Model: 600001

INTRODUCTION





The Rain-X Windshield Repair Kit, designed for quick and easy repairs.

This manual provides comprehensive instructions for the Rain-X 600001 Windshield Repair Kit. This kit is designed to minimize the appearance and stop the spread of chips and cracks in your vehicle's windshield, offering a quick and easy solution to avoid full windshield replacement. It is effective for round damage up to 1 inch in diameter and cracks up to 12 inches in length.

For optimal results, repairs should be performed as soon as possible after damage occurs and before the affected area is contaminated by dirt or water. Avoid using glass treatments on the damaged area prior to repair. Glass treatments can be applied one week after the repair is complete.

rain-x®



EASY TO USE



**ADVANCED
RESIN FORMULA**



**MINIMIZES
CHIPS & CRACKS**



**GOOD FOR
MULTIPLE REPAIRS**



MADE IN THE USA
OF FOREIGN AND US COMPONENTS



Key benefits of the Rain-X Windshield Repair Kit, including ease of use and advanced resin formula.

SAFETY INFORMATION

Please refer to the official [Safety Information PDF](#) for detailed safety guidelines and warnings. This product contains methacrylates, which may cause allergic reactions. High vapor concentrations may cause drowsiness or dizziness. Avoid contact with eyes, skin, and clothing. Wash thoroughly after handling. In case of eye or skin contact, immediately flush with plenty of water. If irritation persists, seek medical attention. Remove contaminated clothing immediately. Keep out of reach of children. For health emergencies, call 1-877-504-9352.

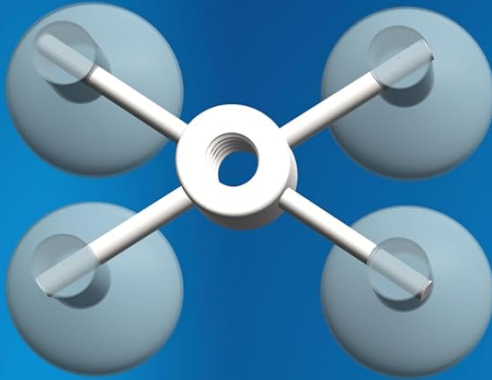
ITEMS INCLUDED

The Rain-X Windshield Repair Kit includes all necessary components for effective repair:

- 1 gram bottle of repair resin
- Repair device (Application Base, Resin Chamber, Pressure Driver)

- Curing strips
- Sleeved razor blade
- Instruction sheet

ITEMS INCLUDED



Application Base



Razor Blade



Curing Strips



Pressure Driver



Resin Chamber



Repair Resin



Directions

Items shown are not actual size.

Image showing the complete contents of the Rain-X Windshield Repair Kit, including the resin bottle, application base with suction cups, pressure driver, resin chamber, razor blade, and curing strips.

SETUP AND PREPARATION

Before beginning the repair process, ensure the damaged area is clean and dry. Perform repairs in the shade to prevent premature curing of the resin.

1. **Clean the impact point:** Thoroughly clean the area around the chip or crack to remove any dirt, debris, or moisture.
2. **Align application base:** Carefully align the application base over the impact point, ensuring the center of the base is directly over the damage.
3. **Secure application base:** Press the suction cups firmly onto the windshield to create a secure seal.

HOW TO USE:



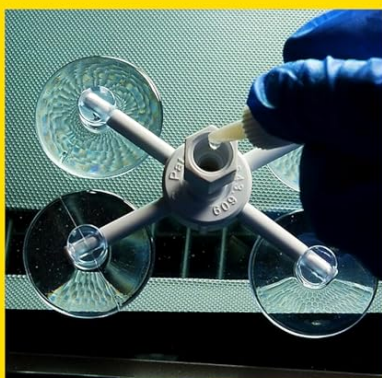
1 Clean the impact point



2 Align application base to impact point



3 Screw in resin chamber



4 Apply Repair resin into resin chamber



5 Remove apparatus & apply curing strip



6 Move car into direct sunlight

Images are for reference only. Please refer to back of bottle or instruction manual for full directions.

Visual steps for preparing the windshield for repair, including cleaning the impact point and correctly positioning the application base.

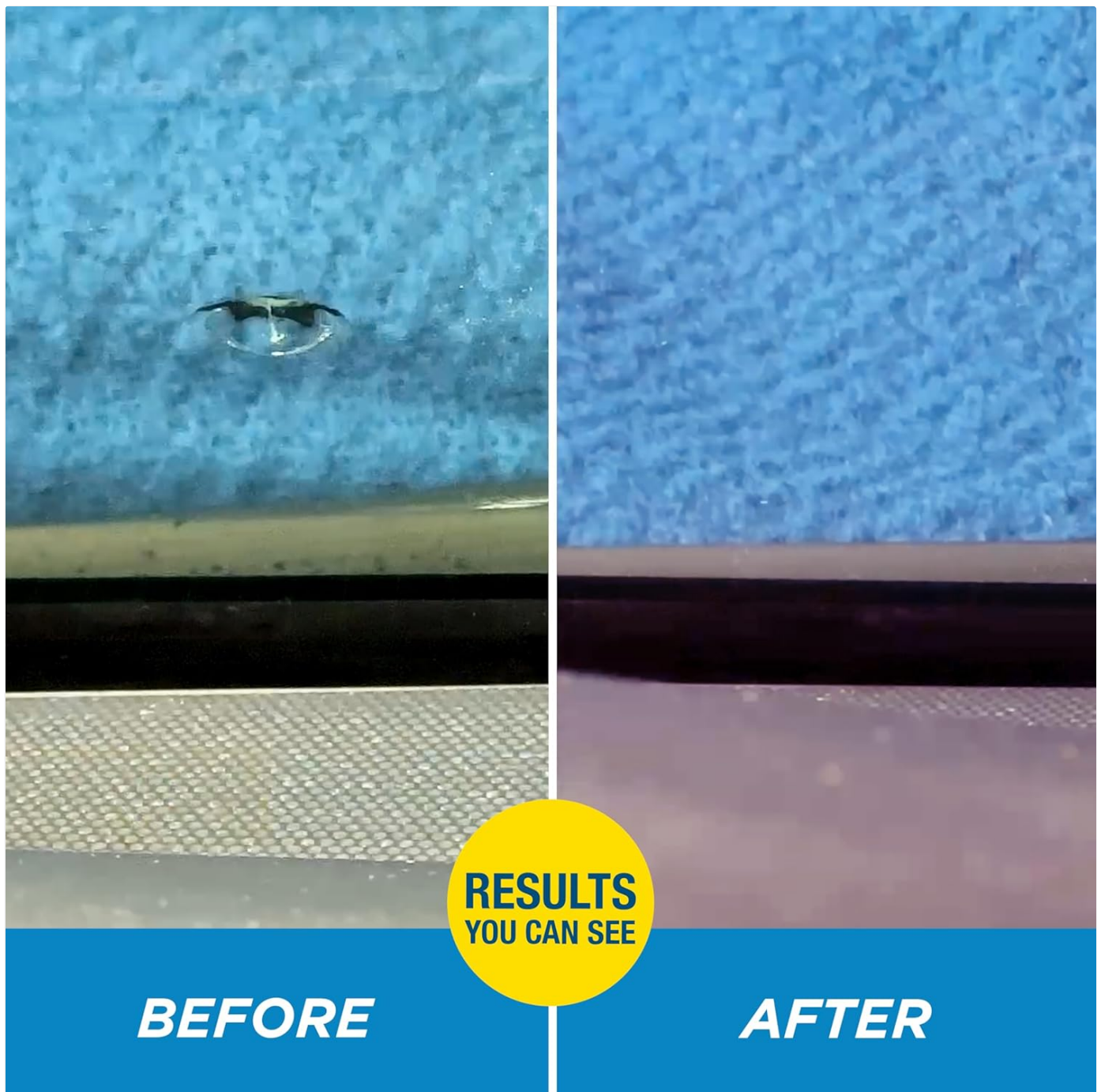
OPERATING INSTRUCTIONS

Follow these steps carefully to repair your windshield chip or crack:

- 4. Screw in resin chamber:** Attach the resin chamber to the application base.
- 5. Apply repair resin:** Dispense the repair resin into the resin chamber. For cracks, apply resin directly to the crack.
- 6. Apply pressure:** Use the pressure driver to create a vacuum, drawing air out of the damage and allowing the resin to fill the void.
- 7. Remove apparatus and apply curing strips:** Once the resin has adequately filled the damage, remove the application base and apply a curing strip over the repaired area.
- 8. Cure in direct sunlight:** Move the vehicle into direct sunlight to allow the resin to cure completely. This typically takes several minutes.
- 9. Remove excess resin:** After curing, carefully scrape off any excess cured resin using the provided razor blade.



Detailed view of the resin application process on a windshield chip.



Visual demonstration of the repair effectiveness, showing a before and after comparison of a windshield chip.



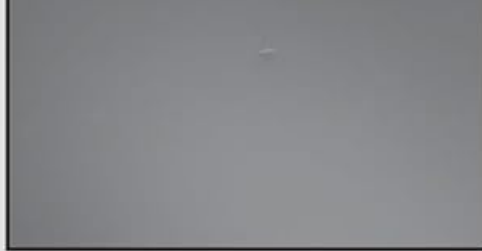
For best results, repairs should be made as soon as possible after damage occurs, and before the break is contaminated by dirt or water. In addition, avoid the use of glass treatments after the crack has formed and prior to repair. However, glass treatments can be applied one (1) week after repair. Works best on round damage not more than one inch in diameter, and cracks not longer than 12 inches.

Will not repair damage to more than one layer of glass.

BEFORE



AFTER



KIT CONTAINS: 1 gram bottle of repair resin, repair device, curing strips, sleeved razor blade, and instruction sheet.

DIRECTIONS: Please see enclosed pamphlet for detailed repair instructions.

REPAIRED AREA MUST CURE IN DIRECT SUNLIGHT. Do not make repairs in the sunlight. Make repairs in the shade, then expose the windshield to direct sunlight when the repair is complete. This will allow the repair to cure.

CAUTION: Contains methacrylates. **PRECAUTIONARY MEASURES:** High vapor concentrations may cause tearing. Avoid contact with eyes, skin and clothing. Wash thoroughly after handling. **FIRST AID:** Eye or skin contact: Immediately flush with plenty of water. If irritation persists, get medical attention. Remove contaminated clothing immediately. **KEEP OUT OF REACH OF CHILDREN. FOR HEALTH EMERGENCY: 1-877-504-9352.**

Questions/Comments, Call 1-855-888-1990

Made in Taiwan.

Visit us at www.rainx.com today!

Rain-X is a TM of Illinois Tool Works Inc. and/or its affiliates. Distributed by ITW Global Brands, a division of ITW. Houston, TX 77024.

© 2012 ITW Global Brands. All rights reserved.

600001

0912



0 79118 00001 1

Additional instructions and details can be found on the back of the product packaging.

MAINTENANCE

Once the repair is complete and fully cured, the treated area requires no special maintenance. For best results, avoid applying glass treatments to the repaired area for at least one week after the repair.

TROUBLESHOOTING

To ensure optimal repair results and avoid common issues:

- **Avoid applying resin too quickly:** Rapid application can lead to air pockets forming within the repair, compromising its effectiveness and clarity.
- **Ensure the crack is not contaminated:** Repairing a chip or crack that contains dirt, water, or other contaminants may lead to poor results. Always clean the area thoroughly before starting.
- **Damage limitations:** This kit is most effective on round damage not more than one inch in diameter and cracks not longer than 12 inches. It will not repair damage to more than one layer of glass. For larger or more complex damage, professional repair or replacement may be necessary.

SPECIFICATIONS

Attribute	Detail
Brand	Rain-X
Model	600001
Item Weight	2.4 ounces
Product Dimensions	1 x 4.38 x 8.56 inches
Special Features	Advanced Resin Formula
ASIN	B00IPS4APU

WARRANTY AND SUPPORT

For further assistance or inquiries, please refer to the official [User Manual \(PDF\)](#). For questions or comments, you may also call 1-855-888-1990. Visit the official Rain-X website at www.rainx.com.

