

[Manuals.plus](#) /

› [Electrolux](#) /

› Electrolux Energieregler EGO simmerstat 50.55021.100, 13 A, 230 V

## Electrolux 50.55021.100

# Electrolux EGO Simmerstat Energy Regulator

MODEL: 50.55021.100

Brand: Electrolux

### Product Overview

---

The Electrolux EGO Simmerstat Energy Regulator, model 50.55021.100, is an original EGO manufactured universal component designed for precise control of heating elements in various appliances, such as cooktops and ovens. This regulator operates at 13 Amperes and 230 Volts, providing continuous energy regulation for optimal performance. It features a robust design with two screw fixings, ensuring a secure and long-lasting installation.



**Figure 1:** Front view of the Electrolux EGO Simmerstat Energy Regulator, showing the control shaft and mounting plate.

## Key Features

- Original EGO manufactured energy regulator.
- Designed for universal application in various heating appliances.
- Operates at 13 Amperes and 230 Volts.
- Features 2 screw fixings for secure mounting.
- Provides continuous energy regulation (simmerstat function).
- Engineered for high performance and extended service life.

## Setup and Installation

**Important Safety Notice:** Installation of this energy regulator involves electrical connections and should only be performed by a qualified and certified electrician or appliance repair technician. Ensure the appliance is completely disconnected from the main power supply before commencing any installation work.

1. **Power Disconnection:** Before beginning, ensure the appliance (e.g., oven, cooktop) is unplugged from the wall outlet or its circuit breaker is switched off. Verify there is no power to the appliance using a voltage tester.
2. **Access the Component:** Carefully open the appliance to gain access to the existing energy regulator or the designated installation area. Refer to your appliance's service manual for specific access instructions.
3. **Disconnect Old Regulator (if applicable):** If replacing an existing regulator, carefully note the wiring connections. It is highly recommended to take a photograph of the existing wiring before disconnecting. Label each wire if necessary.
4. **Mount the New Regulator:** Position the Electrolux EGO Simmerstat Energy Regulator in its designated location. Secure it using the two screw fixings. Ensure it is firmly mounted and stable.
5. **Connect Wiring:** Connect the electrical wires to the terminals of the new regulator according to the appliance's wiring diagram or the notes taken from the old regulator. Ensure all connections are tight and secure. The regulator is designed for 230V operation and 13A current.
6. **Reassemble Appliance:** Once wiring is complete and verified, carefully reassemble the appliance, ensuring all covers and panels are securely fastened.
7. **Test Functionality:** Reconnect the appliance to the main power supply. Test the functionality of the energy regulator to ensure it controls the heating element as expected.

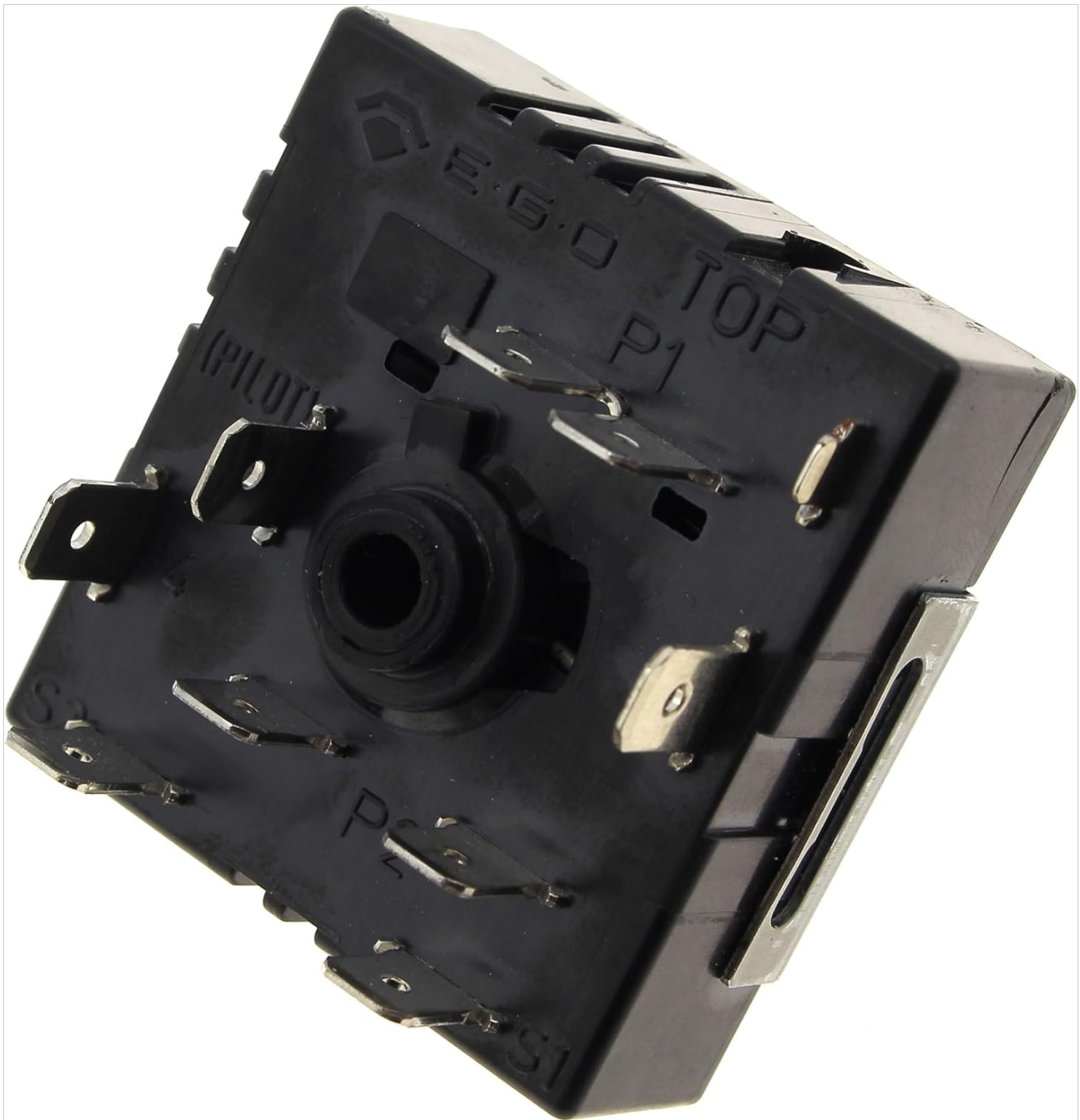


Figure 2: Rear view of the Electrolux EGO Simmerstat Energy Regulator, showing the electrical terminals for connection.

## Operating Principles

The EGO Simmerstat Energy Regulator operates by cyclically switching the power to the heating element on and off. The duration of the "on" cycle is controlled by the position of the regulator's shaft, which is typically connected to a control knob on the appliance. Turning the knob adjusts the ratio of "on" time to "off" time, thereby regulating the average power supplied to the heating element and controlling its temperature output. This method provides continuous and precise heat control, from a gentle simmer to full power.

## Maintenance

The Electrolux EGO Simmerstat Energy Regulator is designed for long-term reliability and typically requires minimal maintenance. However, periodic inspection can help ensure its continued optimal performance.

- **Power Disconnection:** Always disconnect the appliance from the power supply before performing any inspection or maintenance.

- **Visual Inspection:** Periodically inspect the regulator and its wiring connections for any signs of wear, corrosion, or damage. Ensure all screw terminals remain tight.
- **Cleaning:** If dust or debris accumulates around the regulator, gently clean it with a soft, dry brush or compressed air. Do not use liquids or abrasive cleaners.
- **Professional Check:** If you notice any unusual operation, such as inconsistent heating or strange odors, consult a qualified technician for diagnosis and repair. Do not attempt to repair the regulator yourself.

## Troubleshooting

If the appliance's heating element is not functioning correctly after installing or while using the energy regulator, consider the following common issues:

- **No Heat Output:**
  - Check if the appliance is properly connected to the power supply.
  - Verify the circuit breaker for the appliance has not tripped.
  - Inspect all wiring connections to the energy regulator for looseness or disconnections.
  - Ensure the control knob is correctly seated and engaging the regulator shaft.
- **Inconsistent or Incorrect Heat:**
  - Confirm the regulator is correctly wired according to the appliance's specifications.
  - Check for any signs of damage or overheating on the regulator or its terminals.
  - Ensure the heating element itself is not faulty.
- **Burning Smell or Smoke:**
  - Immediately disconnect power to the appliance.
  - This indicates a serious electrical issue. Do not attempt to operate the appliance. Contact a qualified technician for immediate inspection and repair.

For complex issues or if the problem persists, it is strongly recommended to consult a professional appliance repair technician.

## Specifications

Attribute	Value
Manufacturer	Electrolux (EGO produced)
Model Number	50.55021.100
Product Dimensions	12 x 3 x 9 cm
Current Rating	13 A
Voltage Rating	230 V
Type	Universal Energy Regulator (Simmerstat)
Fixings	2 Screw Fixings
Batteries Required	No

## Warranty and Support

---

For information regarding the warranty period and terms for your Electrolux EGO Simmerstat Energy Regulator, please refer to the documentation provided with your original appliance or contact the seller or Electrolux customer support directly. Keep your proof of purchase for any warranty claims.

For technical support or service inquiries, please contact Electrolux customer service or a certified appliance repair professional in your region. Do not attempt to disassemble or repair the regulator yourself, as this may void the warranty and pose safety risks.