



[Manuals.plus](#) /

› [MINI](#) /

› 2013 Mini Cooper Clubman Owner's Manual: Comprehensive Guide

## MINI Clubman

# 2013 Mini Cooper Clubman Owner's Manual

Your comprehensive guide to operating and maintaining your vehicle.

## INTRODUCTION

---

This manual provides essential information for the safe and efficient operation of your 2013 Mini Cooper Clubman. It contains detailed instructions, important safety warnings, and maintenance schedules designed to help you understand and care for your vehicle. Please read this manual thoroughly to familiarize yourself with all features and functions.



*Image: Front cover of the 2013 Mini Cooper Clubman Owner's Manual, featuring images of two Mini Clubman vehicles. This manual is your primary resource for vehicle information.*

## **GETTING STARTED WITH YOUR MANUAL**

---

To effectively use this manual, begin by reviewing the general layout. Information is organized into sections covering various aspects of your vehicle. Key symbols and warnings are used throughout to highlight important safety instructions and operational procedures. Always refer to the relevant section for specific details regarding a feature or function.



*Image: A black textured folder with a silver MINI logo emblem, typically used to hold the complete set of vehicle documents, including the owner's manual.*

## OPERATING YOUR VEHICLE

This section details the operation of your Mini Cooper Clubman. It covers starting and stopping the engine, using the transmission, understanding dashboard indicators, and operating various comfort and convenience features. Familiarize yourself with the controls before driving to ensure safe operation.

- **Starting the Engine:** Insert the key into the ignition and turn it to the start position, or press the start/stop button while depressing the brake pedal.
- **Dashboard Indicators:** Understand the meaning of warning lights and indicators on your instrument cluster. Consult the manual immediately if a critical warning light illuminates.
- **Climate Control:** Instructions for operating the heating, ventilation, and air conditioning system.
- **Infotainment System:** Guidance on using the radio, media player, and navigation system (if equipped).

**Brazil**

BMW do Brasil Ltda. PPS40028



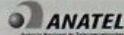
0079-11-4557



(01)07898926774111

Resolução 566 - ANATEL  
Este equipamento opera em caráter secundário, isto é, não tem direito a proteção contra interferência prejudicial, mesmo de estações do mesmo tipo, e não pode causar interferência a sistemas operando em caráter primário.

Resolução 242/2000  
Este equipamento está homologado pela ANATEL, de acordo com os procedimentos regulamentados pela Resolução 242/2000 e atende aos requisitos técnicos aplicados.



0488-11-6164



(01) 07898926774128

„Este equipamento opera em caráter secundário, isto é, não tem direito a proteção contra interferência prejudicial, mesmo de estações do mesmo tipo, e não pode causar interferência a sistemas operando em caráter primário.“

**Canada**

This class B digital apparatus complies with Canadian ICES-003.

Cet appareil numérique de la classe B est conforme à la norme NMB-003 du Canada.

© 2012 Bayerische Motoren Werke  
Aktiengesellschaft

Munich, Germany  
Not to be reproduced, wholly or in part, without written permission from BMW AG, Munich.

VI/12

Printed on environmentally friendly paper,  
bleached without chlorine, suitable for recycling.

**Europe**
**Hrvatski**

Ovime Alpine Electronics Inc. izjavljuje da je AL10\*\*, AL18\*\*, AL20\*\*, AL25\*\*, AL56\*\* sukladan s ključnim zahtjevima i drugim relevantnim odredbama Direktive 1999/5/EZ-a.

Ovime Continental Automotive Systems izjavljuje da je BMW L7 Entry Head Unit sukladan s ključnim zahtjevima i drugim relevantnim odredbama Direktive 1999/5/EZ-a.

Ovime Harman International izjavljuje da je BMW COMBOX sukladan s ključnim zahtjevima i drugim relevantnim odredbama Direktive 1999/5/EZ-a.

Ovim, Harman Becker Automotive Systems GmbH, izjavljuje da ovaj tip NBT zadovoljava bitne zahtjeve i ostale važeće odrednice, a sukladno Smjernici 1999/5/EC.

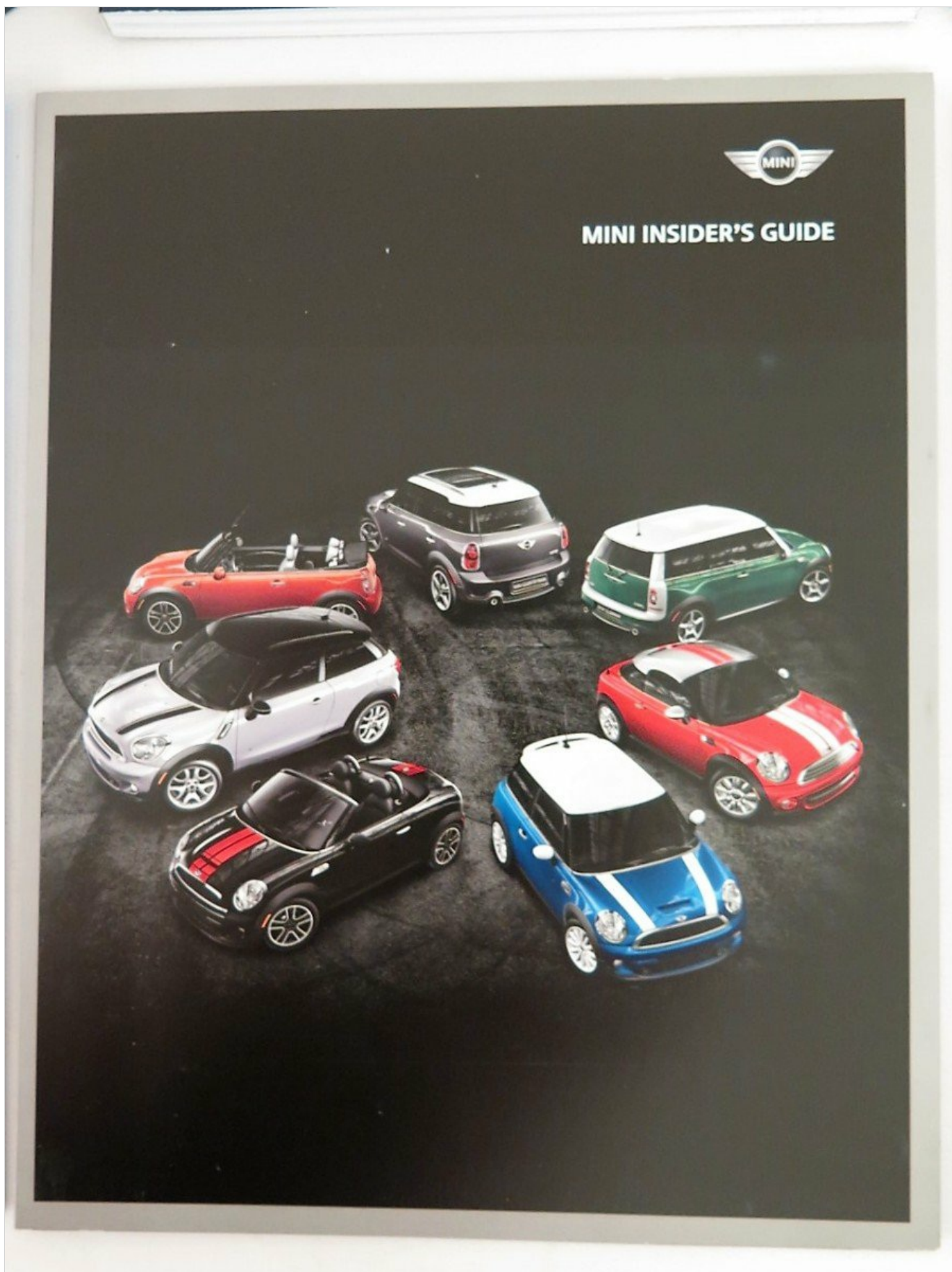
Image: Front cover of the "MINI SAFETY TIPS" manual, featuring a blue Mini Cooper S. This supplementary guide provides crucial information on safe driving practices and vehicle safety features.

## MAINTENANCE

Regular maintenance is crucial for the longevity and performance of your Mini Cooper Clubman. This section outlines recommended service intervals, fluid checks, tire care, and other routine maintenance procedures.

Adhering to the maintenance schedule helps ensure your vehicle remains in optimal condition.

- **Service Schedule:** Follow the recommended service intervals for oil changes, filter replacements, and inspections.
- **Fluid Checks:** Instructions for checking engine oil, coolant, brake fluid, and windshield washer fluid levels.
- **Tire Care:** Information on tire pressure, rotation, and replacement guidelines.
- **Battery Maintenance:** Tips for maintaining your vehicle's battery.



*Image: Front cover of the "TIRE MANUFACTURERS' WARRANTIES GUIDE," a supplementary document providing details on tire warranties. This is important for understanding tire maintenance and replacement.*

## **TROUBLESHOOTING**

---

This section provides guidance on identifying and resolving common issues you might encounter with your Mini Cooper Clubman. It includes solutions for minor problems and advice on when to seek professional assistance.

Always consult this section before attempting repairs yourself.

- **Engine Not Starting:** Checks for battery, fuel, and ignition system issues.
- **Warning Lights:** Interpretation of various warning lights and recommended actions.
- **Brake System Issues:** Common brake problems and initial diagnostic steps.
- **Electrical Malfunctions:** Troubleshooting for lights, wipers, and other electrical components.

## SPECIFICATIONS

---

The specifications section provides detailed technical data for your 2013 Mini Cooper Clubman. This includes engine type, dimensions, capacities (fuel, oil, coolant), and performance figures. This information is useful for understanding your vehicle's capabilities and for purchasing compatible parts and fluids.

### General Vehicle Specifications (Refer to manual for full details)

Category	Detail
Model Year	2013
Vehicle Type	Mini Cooper Clubman
Engine Type	<i>(Refer to manual for specific engine variants)</i>
Fuel Capacity	<i>(Refer to manual)</i>
Dimensions (L/W/H)	<i>(Refer to manual)</i>



*Image: A page from the manual displaying license texts and certifications for various regions including Brazil, Europe (CE 0560), and Canada (Canadian ICES-003). This section provides regulatory compliance information.*

## **WARRANTY AND SUPPORT**

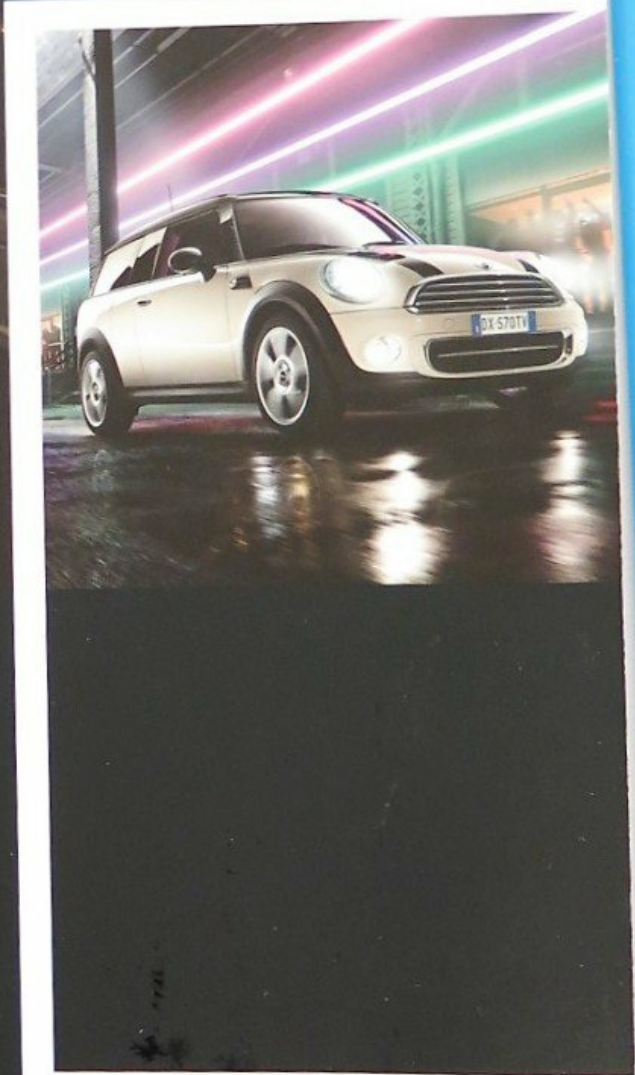
---

This section provides information regarding your vehicle's warranty coverage and how to obtain support. It outlines the terms and conditions of the manufacturer's warranty, including coverage periods and what is covered. For specific warranty details or to contact customer support, refer to the dedicated service and warranty information booklet included with your vehicle documents.



# OWNER'S MANUAL

MINI  
MINI CLUBMAN



*Image: Front cover of the "2013 MINI SERVICE & WARRANTY INFORMATION" manual, featuring a blue Mini Cooper S. This document contains detailed terms and conditions for vehicle service and warranty coverage.*

For further assistance, please contact an authorized Mini service center. Contact information can typically be found in the service booklet or on the official Mini website.

