

## GROHE 47850000

# Grohe 47850000 Polished Chrome Parts Control Unit Thermal Kit #1 User Manual

Model: 47850000 | Brand: GROHE

## INTRODUCTION

---

This manual provides essential information for the installation, operation, maintenance, and troubleshooting of your GROHE 47850000 Polished Chrome Parts Control Unit Thermal Kit #1. By combining superior technology with breath-taking designs, GROHE products enhance your bathing space with quality materials, German craftsmanship, and superior innovation for long-lasting performance.

Key features of this product include:

- Control Unit THM Kit
- Designed for thermal control in plumbing systems
- Manufactured by GROHE
- Country of Origin: Mexico

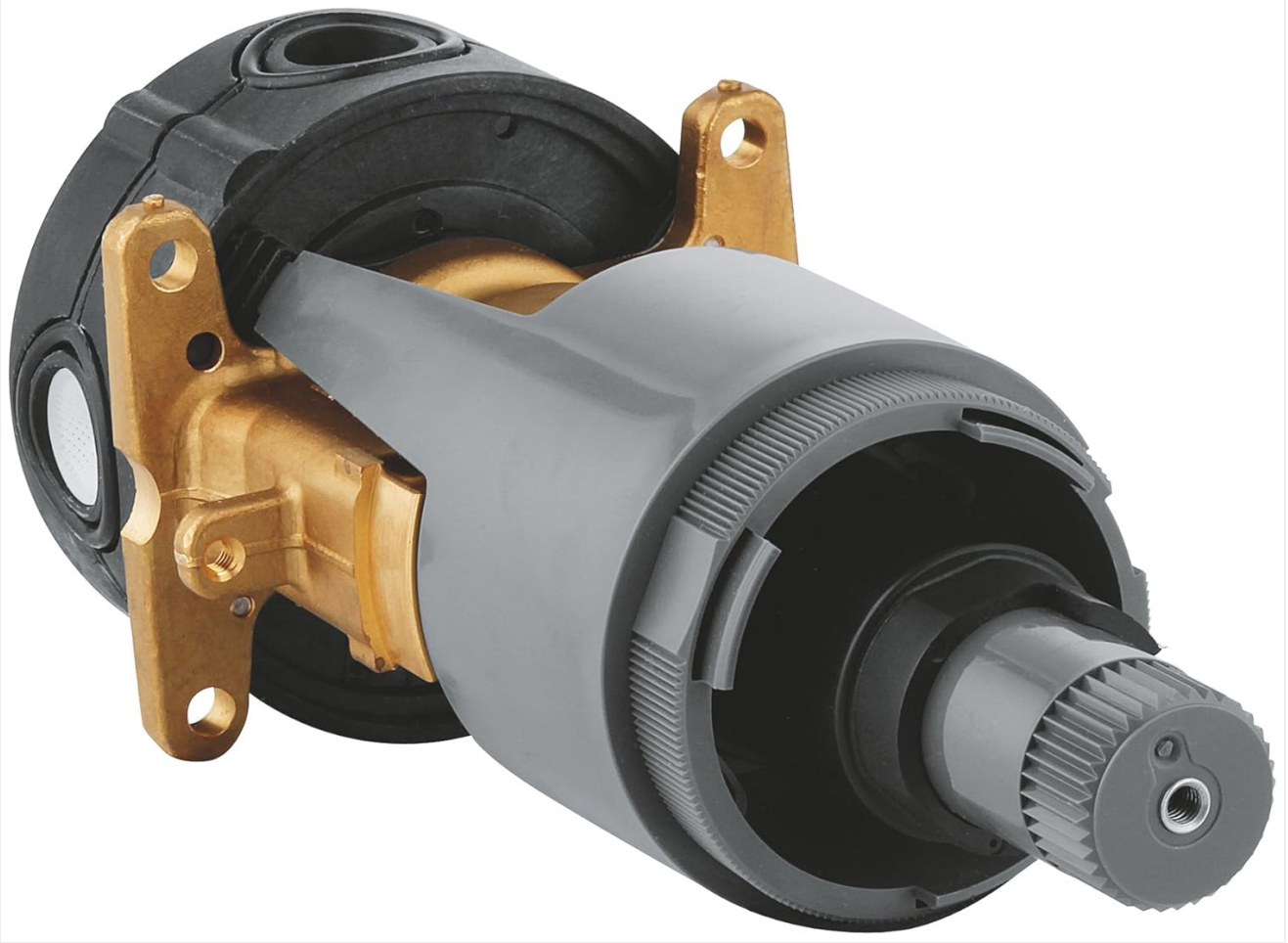


Figure 1: The GROHE 47850000 Polished Chrome Parts Control Unit Thermal Kit #1, showing its brass and plastic components designed for precise temperature regulation.

## SETUP AND INSTALLATION

---

The GROHE 47850000 Thermal Kit is a critical component for your faucet system. Proper installation is essential for optimal performance and safety. This product includes an installation guide, which should be followed meticulously.

1. **Preparation:** Ensure the main water supply is turned off before beginning any installation work. Clear the work area and gather all necessary tools.
2. **Consult the Included Guide:** Refer to the detailed "Installation Guide" provided with your product for specific instructions, diagrams, and safety warnings. This guide contains crucial information tailored to this specific model.
3. **Component Identification:** Familiarize yourself with all parts of the thermal control unit and their intended placement within your plumbing system.
4. **Secure Connections:** Ensure all connections are tight and leak-free. Use appropriate sealing materials as recommended in the installation guide.
5. **Professional Assistance:** If you are unsure about any step of the installation process, it is highly recommended to consult a qualified plumber to ensure correct and safe setup.

*Note: Incorrect installation can lead to water damage, product malfunction, or personal injury.*

## OPERATING INSTRUCTIONS

---

The GROHE 47850000 Thermal Kit is designed to provide precise and consistent water temperature control for your shower or bath. Once properly installed, its operation is integrated with your faucet's handle controls.

- **Temperature Regulation:** The thermal unit automatically mixes hot and cold water to maintain a desired temperature, preventing sudden fluctuations.
- **Safety Stop:** Many GROHE thermal units include a safety stop feature to prevent accidental scalding by limiting the maximum hot water temperature. Refer to your faucet's specific manual for details on adjusting or overriding this feature.
- **Flow Control:** While primarily for temperature, the unit works in conjunction with your faucet's flow control mechanism.

To operate, simply use your faucet's temperature and flow handles as usual. The thermal kit will ensure a comfortable and safe water experience.

## MAINTENANCE

---

Regular maintenance helps ensure the longevity and optimal performance of your GROHE thermal control unit. While the internal components are designed for durability, external care is important.

- **Cleaning:** Clean visible parts of the faucet and surrounding area with a soft cloth and mild soap. Avoid abrasive cleaners, scouring pads, or harsh chemicals, as these can damage the polished chrome finish.
- **Leak Checks:** Periodically inspect the area around the control unit for any signs of leaks. Address any leaks promptly to prevent water damage.
- **Water Quality:** In areas with hard water, mineral deposits can accumulate over time. If you notice a decrease in performance or temperature consistency, professional servicing might be required to descale the unit.
- **Winterization (if applicable):** If the plumbing system is in an unheated area subject to freezing temperatures, follow standard winterization procedures to prevent damage from frozen pipes.

## TROUBLESHOOTING

---

If you encounter issues with your GROHE 47850000 Thermal Kit, refer to the following common problems and solutions. For complex issues, contact a qualified professional.

Problem	Possible Cause	Solution
Inconsistent water temperature	Fluctuations in hot/cold water pressure; mineral buildup in the cartridge.	Check water supply lines for blockages. If problem persists, the thermal cartridge may need cleaning or replacement by a professional.
No hot water or insufficient hot water	Hot water supply issue; thermal cartridge malfunction; safety stop engaged.	Verify hot water heater is functioning. Consult your faucet manual for safety stop adjustment. If still no hot water, professional inspection of the thermal unit is required.
Water flow is too low	Supply line blockage; aerator clogged (if applicable to faucet); issue with the control unit.	Check water pressure to the unit. Clean or replace faucet aerator. If the issue persists, the control unit may require professional inspection.

## SPECIFICATIONS

---

The following are the technical specifications for the GROHE 47850000 Polished Chrome Parts Control Unit Thermal Kit #1:

- **Model Number:** 47850000

- **Brand:** GROHE
- **Material:** Metal
- **Product Dimensions:** 6"D x 3"W x 3"H
- **Item Weight:** 0.67 Pounds (approx. 10.7 ounces)
- **Color:** GROHE CHROME
- **Style:** GrohFlex
- **Included Components:** Installation Guide
- **Product Benefits:** Removes Impurities (*Note: This benefit typically refers to the overall faucet system, not solely the thermal unit itself.*)
- **Country of Origin:** Mexico
- **Date First Available:** January 15, 2014

## WARRANTY AND SUPPORT

---

### Warranty Information:

This product comes with a **1-year Limited warranty from date of purchase**. Please retain your proof of purchase for warranty claims.

### Customer Support:

For technical assistance, replacement parts, or warranty service, please contact GROHE customer support. You can often find contact information on the GROHE official website or through the retailer where you purchased the product.

Visit the official GROHE Store for more information on their product range and support resources. [GROHE Store on Amazon](#)