

Lepro 4100057-DW

Lepro 12V LED Strip Light Instruction Manual

Model: 4100057-DW

1. INTRODUCTION

This instruction manual provides detailed guidance for the safe and effective use of your Lepro 12V LED Strip Light. This flexible, non-waterproof LED tape light features SMD 2835 LEDs and is 16.4 feet (5 meters) in length, emitting a daylight white light. Please read this manual thoroughly before installation and operation.



Image 1.1: Lepro 12V LED Strip Light, 16.4ft, shown with its packaging and coiled strip.

2. SAFETY INFORMATION

- **Power Adapter:** A 12V power adapter is required and not included. Ensure the power adapter used is rated for 12V DC output. Do not use a power adapter with an output voltage higher than 12V, as this can damage the LED strip and pose a safety risk.
- **Wattage Compatibility:** The LED strip has a wattage of 16W. Ensure the total wattage of the LED strip lights does not exceed the maximum wattage capacity of your power adapter.
- **Heat Output:** The working voltage is 12V, resulting in extremely low heat generation, making it safe to touch and suitable for environments accessible to children.
- **Fragility:** The strip light is flexible but fragile. Exercise caution during installation and handling to avoid tearing or excessive bending, which can damage the internal circuitry.
- **Indoor Use Only:** This product is designed for indoor use and is non-waterproof. Avoid exposure to moisture or outdoor elements.

3. PACKAGE CONTENTS

Upon opening the package, verify that all components are present and undamaged. The package includes:

- 1 x Lepro 12V LED Strip Light (16.4 ft / 5m)

- 1 x User Manual

Note: A 12V power adapter is **not included** and must be purchased separately.

Package List



Box

User Manual



LED Strip Light



Note: Power adapter not include in package, it sold seperately.



Image 3.1: Illustration of package contents, highlighting the LED strip light and user manual. The power adapter is not included.

4. SETUP AND INSTALLATION

Follow these steps for proper installation of your LED strip light:

1. **Prepare the Surface:** Ensure the installation surface is clean, dry, and smooth. Wipe the surface thoroughly to remove any dust, grease, or moisture.
2. **Measure and Cut (Optional):** The LED strip can be cut every 3 LEDs along the designated cutting marks. Use sharp scissors to ensure a clean cut. **Do not cut in any other location**, as this will damage the strip.
3. **Peel and Stick:** Carefully peel off the protective backing from the self-adhesive tape on the back of the LED strip. Press the strip firmly onto the prepared surface, ensuring good contact along its entire length.
4. **Secure with Clips (Optional):** For added security, especially on textured surfaces or corners, use fixing clips (not included) to further secure the strip.

5. **Connect Power:** Connect the LED strip to a compatible 12V DC power adapter (not included). Ensure the polarity is correct.

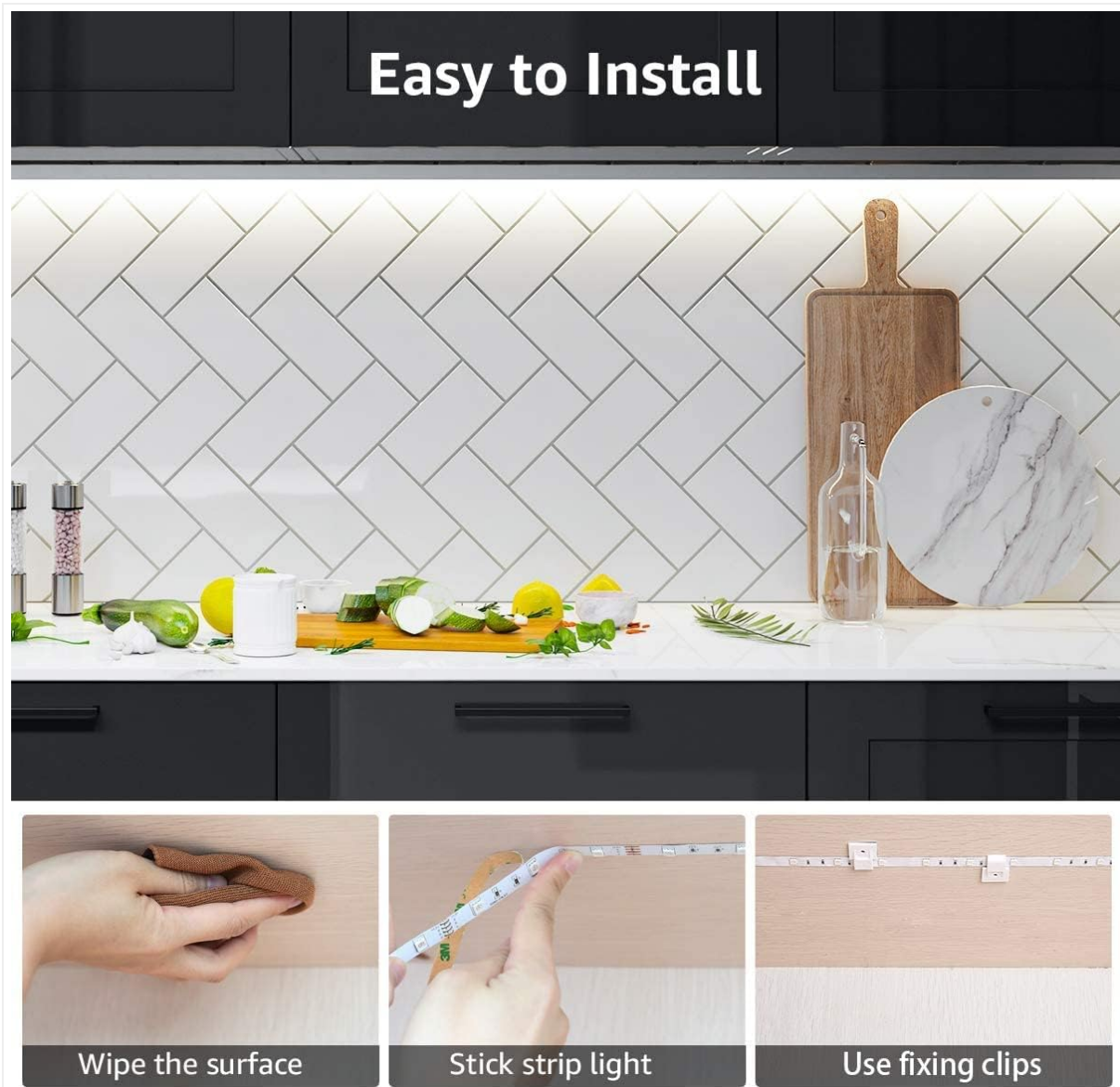


Image 4.1: Visual guide for easy installation, showing surface preparation, adhesive application, and optional use of fixing clips.



Flexible & Cuttable & DIY

Image 4.2: The LED strip's flexibility allows for various shapes and DIY installations.

5. OPERATING INSTRUCTIONS

Once the LED strip is securely installed and connected to a compatible 12V DC power adapter, simply plug the power adapter into a standard electrical outlet. The LED strip will illuminate. To turn off the lights, unplug the power adapter or use an inline switch if one is integrated into your power setup. The LED strip provides a consistent daylight white light (6000K) suitable for various indoor applications.

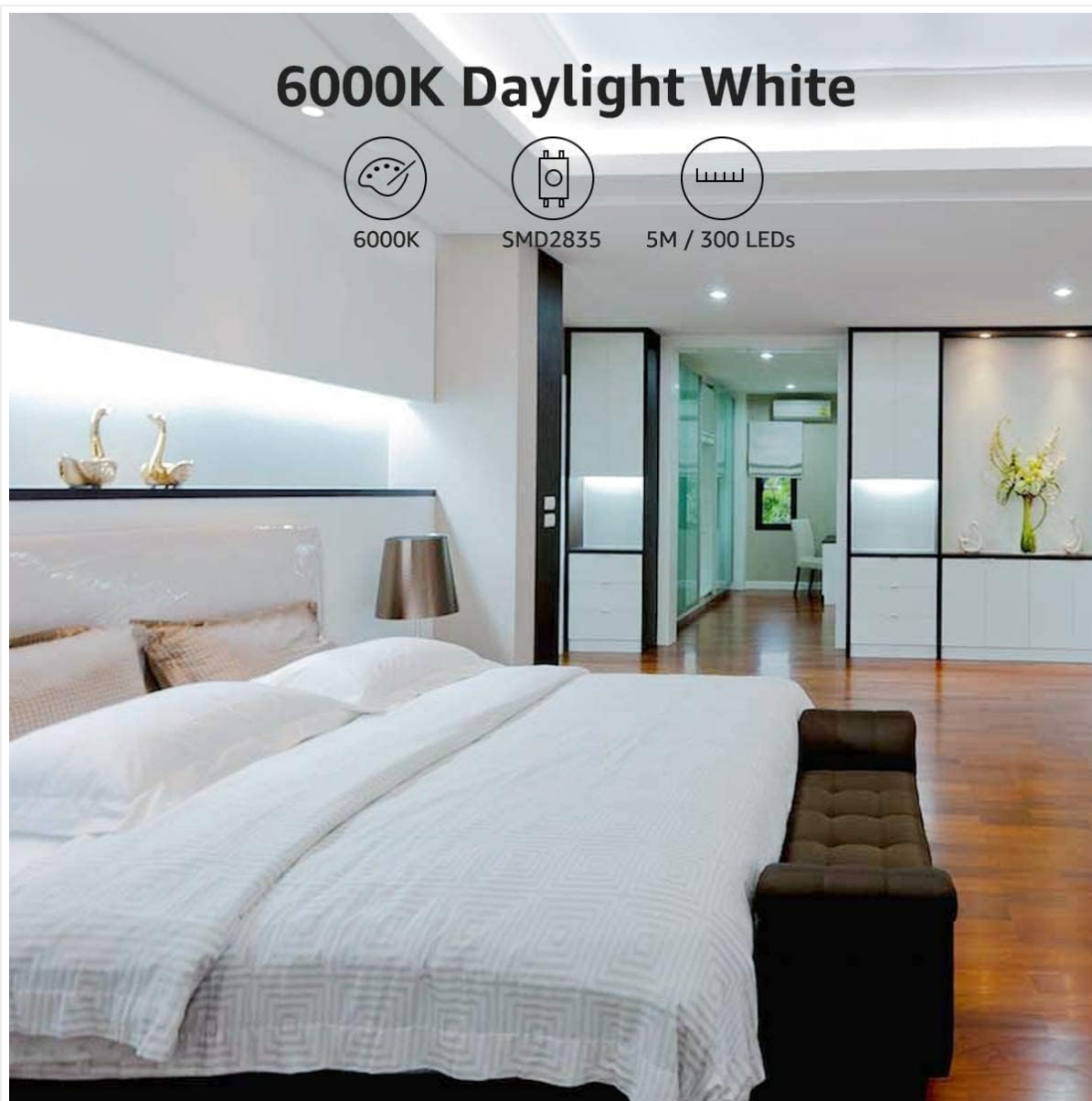


Image 5.1: Example of the 6000K Daylight White illumination provided by the LED strip.

6. MAINTENANCE

- **Cleaning:** Ensure the LED strip is unplugged before cleaning. Gently wipe the surface of the strip with a soft, dry cloth. Do not use liquid cleaners or abrasive materials.
- **Inspection:** Periodically inspect the strip for any signs of damage, such as cuts, tears, or loose connections. If damage is found, discontinue use and replace the strip.
- **Storage:** If storing the LED strip, ensure it is coiled loosely and kept in a dry, cool place away from direct sunlight.

7. TROUBLESHOOTING

Problem	Possible Cause	Solution
---------	----------------	----------

Problem	Possible Cause	Solution
LED strip does not light up.	No power to the adapter. Incorrect power adapter voltage. Loose connection between strip and adapter. Damaged LED strip.	Check if the power adapter is plugged into a working outlet. Ensure the power adapter is 12V DC. Verify all connections are secure. Inspect the strip for visible damage. If damaged, replace the strip.
Part of the LED strip is not lighting up.	Damage to a section of the strip. Improper cut.	Inspect the non-lighting section for physical damage or improper cuts. If a section was cut incorrectly, it may be permanently damaged.
Adhesive is not sticking well.	Surface was not clean or smooth. Insufficient pressure applied during installation.	Clean the surface thoroughly and reapply. Use additional fixing clips for better adhesion.

8. SPECIFICATIONS

Feature	Detail
Brand	Lepro
Model Number	4100057-DW
Light Source Type	LED (SMD 2835)
Light Color	Daylight White
Color Temperature	6000 Kelvin
Luminous Flux	1200 Lumens
Voltage	12 Volts DC
Wattage	16 Watts
Length	16.4 ft (5 meters)
Dimensions (L x W x H)	196.85 x 0.31 x 0.08 inches
Material	Copper, Plastic
Indoor/Outdoor Usage	Indoor Only


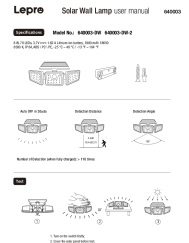

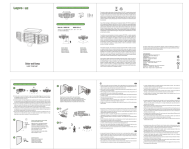
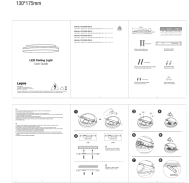
Feature	Detail
Water Resistance Level	Non-Waterproof (IP20)
Special Features	Slim, flexible, cuttable, self-adhesive

9. WARRANTY AND SUPPORT

For warranty information or technical support, please refer to the official Lepro website or contact their customer service directly. Keep your purchase receipt as proof of purchase.

You can visit the Lepro store on Amazon for more products and support:[Lepro Amazon Store](#)

Related Documents - 4100057-DW

	<p>Lepro LED Light Strip User Manual and Specifications</p> <p>User manual for Lepro LED Light Strips (Model PR4100067 series). Includes installation, safety, specifications, and disposal information.</p>
	<p>Lepro Solar Wall Lamp 640003-DW User Manual</p> <p>User manual for the Lepro Solar Wall Lamp, model 640003-DW. Includes specifications, installation instructions, and operational notes for this energy-efficient lighting solution.</p>
	<p>Lepro Solar Wall Lamp User Manual</p> <p>User manual for the Lepro Solar Wall Lamp, providing installation, operation, and maintenance instructions. Features include adjustable lighting angles, motion detection, and weather resistance.</p>
	<p>Lepro Solar Wall Lamp User Manual & Installation Guide (Model 640003-DW)</p> <p>Comprehensive user manual and installation guide for the Lepro Solar Wall Lamp (Model 640003-DW). Learn about specifications, setup, operation, and maintenance.</p>
	<p>Lepro LED Ceiling Light User Guide: Installation and Specifications</p> <p>Detailed user guide for Lepro LED Ceiling Lights, including model specifications, installation instructions, safety information, and dimensions for PR1500024 and PR1500035 series.</p>



[Lepro LED Ceiling Light User Guide and Installation Instructions](#)

Comprehensive user guide for Lepro LED Ceiling Lights, including installation instructions, safety precautions, model specifications, and packing list for models PR150003, PR150004, and PR150005.