



Manuals.plus /

› Rosseto /

› Rosseto EZ-SERV EZ520 Triple Cereal Dispenser User Manual

Rosseto EZ520

Rosseto EZ-SERV EZ520 Triple Cereal Dispenser User Manual

Model: EZ520

1. INTRODUCTION

This manual provides comprehensive instructions for the safe and efficient use of your Rosseto EZ-SERV EZ520 Triple Cereal Dispenser. Please read this manual thoroughly before assembly, operation, or maintenance to ensure proper function and longevity of the product.



Figure 1.1: The Rosseto EZ-SERV EZ520 Triple Cereal Dispenser shown in a commercial buffet environment. This image displays the dispenser with three clear acrylic containers filled with various cereals, mounted on a black steel stand with a walnut base.

2. SAFETY INSTRUCTIONS

- Always place the dispenser on a stable, level surface to prevent tipping.
- Do not overload the containers beyond their specified capacity (1.3 Gallons per container).
- Keep hands and foreign objects away from the dispensing mechanism during operation.
- This product is designed for dispensing dry goods such as cereal, granola, and snacks. Do not use with liquids or sticky substances.

- Keep out of reach of children to prevent accidental injury or misuse.
- Refer to the "Cleaning and Maintenance" section for proper cleaning procedures.

3. PACKAGE CONTENTS

Verify that all components are present and undamaged upon unpacking. If any parts are missing or damaged, contact Rosseto customer support.

- 1x Black Matte Steel Stand with Walnut Base
- 3x Acrylic Containers (1.3 Gallons each)
- 3x Dispensing Mechanisms with Portion Control Wheels
- 3x Lids for Acrylic Containers

4. SETUP AND ASSEMBLY

Follow these steps to assemble your EZ-SERV EZ520 dispenser. No tools are required for assembly.

1. **Unpack Components:** Carefully remove all parts from the packaging.
2. **Position the Base:** Place the black matte steel stand with the walnut base on your desired stable, level surface.
3. **Attach Dispensing Mechanisms:** Securely attach each of the three dispensing mechanisms to the designated slots on the steel stand. Ensure they are firmly seated.
4. **Place Acrylic Containers:** Carefully place each acrylic container onto its corresponding dispensing mechanism. Ensure the container is properly aligned and stable.
5. **Install Lids:** Place the lids onto the top of each acrylic container.

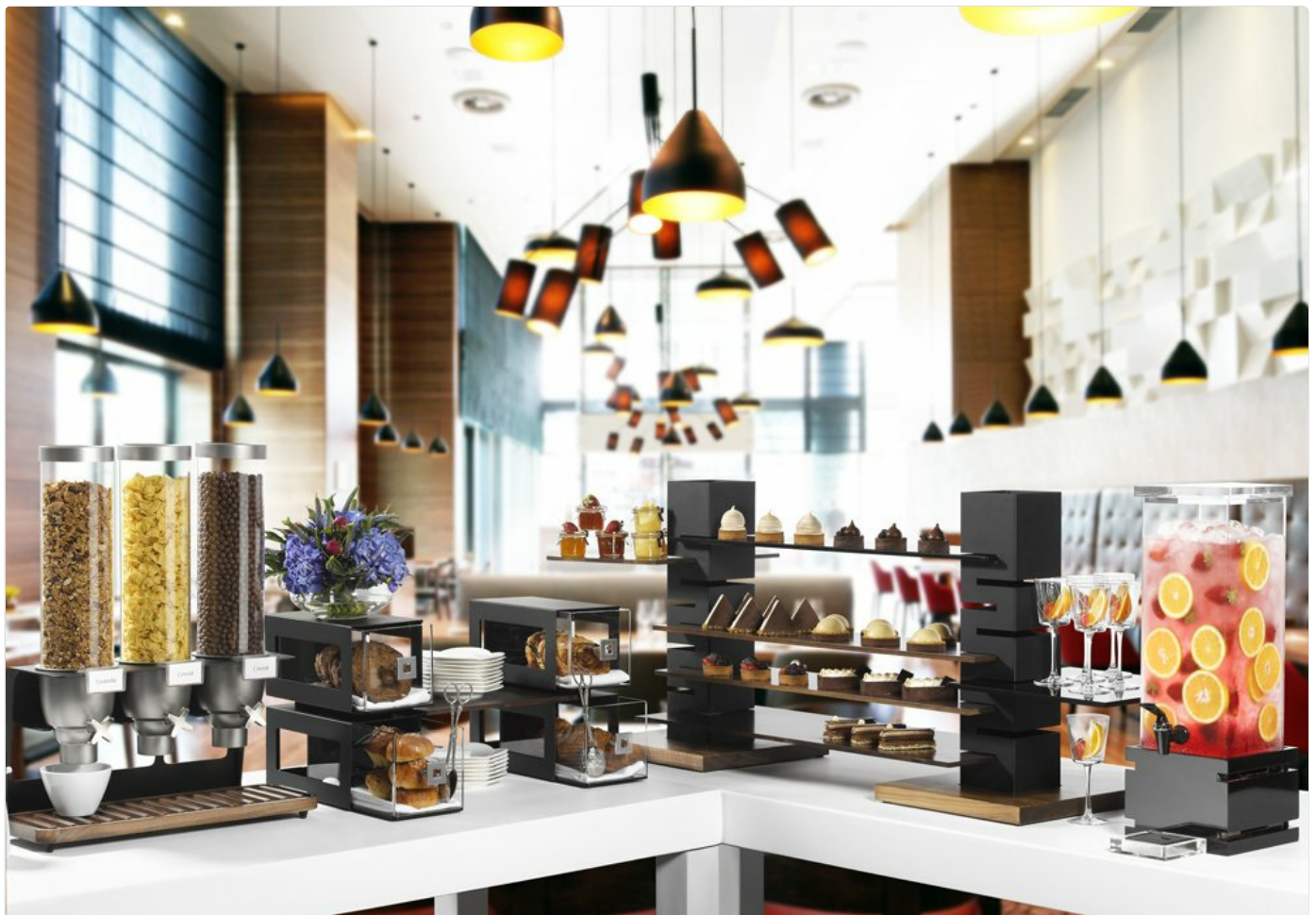


Figure 4.1: A detailed view of the Rosseto EZ-SERV EZ520 dispenser, highlighting the three clear acrylic containers, the dispensing mechanisms, and the walnut base. This image illustrates the assembled unit ready for filling.

5. OPERATING INSTRUCTIONS

- 1. Fill Containers:** Remove the lids and pour your desired dry goods (cereal, granola, snacks) into each acrylic container. Do not overfill.
- 2. Replace Lids:** Securely place the lids back onto the containers to maintain freshness.
- 3. Dispense Product:** Position a bowl or serving dish directly under the desired dispensing mechanism. Turn the portion control wheel clockwise to dispense approximately 1 ounce of product per rotation.
- 4. Stop Dispensing:** Release the portion control wheel to stop the flow of product.

6. CLEANING AND MAINTENANCE

Regular cleaning ensures hygiene and extends the life of your dispenser.

- **Hand Wash Only:** The acrylic containers and dispensing mechanisms are *not* dishwasher safe. Hand wash all removable parts with warm, soapy water.
- **Rinse Thoroughly:** Rinse all parts thoroughly with clean water to remove soap residue.
- **Dry Completely:** Allow all parts to air dry completely before reassembly or refilling to prevent moisture buildup.
- **Clean Base:** Wipe the steel stand and walnut base with a damp cloth. Do not submerge the base in water.
- **Avoid Abrasives:** Do not use abrasive cleaners or scouring pads, as these can scratch the acrylic and damage the finish.

7. TROUBLESHOOTING

Problem	Possible Cause	Solution
Product not dispensing or dispensing slowly.	<ul style="list-style-type: none">• Container is empty or nearly empty.• Product is clumped or too large for the mechanism.• Dispensing mechanism is clogged.	<ul style="list-style-type: none">• Refill the container.• Ensure product is suitable for dispenser. Break up clumps if possible.• Disassemble and clean the dispensing mechanism thoroughly.
Dispenser feels unstable.	<ul style="list-style-type: none">• Not placed on a level surface.• Components not fully assembled.	<ul style="list-style-type: none">• Move to a flat, stable surface.• Check that containers and mechanisms are securely seated.
Acrylic containers appear cloudy or scratched.	<ul style="list-style-type: none">• Use of abrasive cleaners or improper cleaning.	<ul style="list-style-type: none">• Always hand wash with mild soap and soft cloth. Avoid harsh chemicals.

8. SPECIFICATIONS

- **Model:** EZ520
- **Brand:** Rosseto
- **Product Dimensions:** 21.13" L x 10" W x 26.25" H
- **Container Capacity:** 3 x 1.3 Gallons (Total 3.9 Gallons)
- **Material:** Acrylic containers, Steel stand, Walnut base

- **Item Weight:** 13.5 Pounds
- **Dispensing Portion:** Approximately 1 ounce per turn
- **Care Instructions:** Hand Wash Only (containers and mechanisms), Wipe Clean (stand and base)

9. WARRANTY AND SUPPORT

For warranty information or technical support, please contact Rosseto customer service. Keep your purchase receipt as proof of purchase.

Rosseto Contact Information:

Please refer to the official Rosseto website or product packaging for the most current contact details.

