

Manuals+

[Q & A](#) | [Deep Search](#) | [Upload](#)

Manuals.plus /

› [Whale](#) /

› Whale Gusher Galley Mk3 Manual Freshwater Galley Pump GP0551 User Manual

Whale GP0551

Whale Gusher Galley Mk3 Manual Freshwater Galley Pump (Model GP0551) User Manual

Model: GP0551 | Brand: Whale

1. INTRODUCTION

The Whale Gusher Galley Mk3 is a manual freshwater galley pump designed for marine applications. This foot-operated pump provides a hands-free solution for water delivery, making it suitable for tasks such as cooking and cleaning on boats up to 80 feet (24m) in length. It is engineered for reliable performance, offering a flow rate of up to 4 gallons (15 liters) per minute.

Key features include:

- Hands-free foot-operated design for convenience.
- High-flow, self-priming performance, pumping up to 4 GPM.
- Ability to run dry without sustaining damage.
- Flexible installation options with multi-directional inlet and outlet hose connections.
- Compatibility with both fresh and saltwater systems (not for pressurized systems).
- Durable construction backed by a 5-year warranty.

2. SAFETY INFORMATION

Please read all instructions carefully before installation and operation. Failure to follow these instructions may result in product damage or personal injury.

- Ensure all connections are secure and watertight to prevent leaks.
- This pump is designed for manual operation and is not intended for use in pressurized water systems.
- Always use appropriate tools and safety gear during installation.
- Keep the pump area clear of obstructions during operation.
- **Warning:** This product may contain materials cautioned by California Proposition 65.

3. PACKAGE CONTENTS

Verify that all components are present before beginning installation:

- Whale Gusher Galley Mk3 Pump (Model GP0551)

4. SETUP AND INSTALLATION

The Whale Gusher Galley Mk3 pump offers flexible installation options to suit various boat layouts. It features multi-directional inlet and outlet hose connections and three mounting options for easy fit in tight spaces.

4.1 Choosing a Location

Select a location that allows for comfortable foot operation and provides easy access for hose connections and future maintenance. Ensure the mounting surface is stable and secure.

4.2 Mounting the Pump

1. Position the pump in the desired location. This model features a left-side foot lever.
2. Mark the mounting points through the designated holes on the pump base.
3. Drill pilot holes if necessary, ensuring they are appropriate for your chosen fasteners (not included).
4. Secure the pump firmly to the mounting surface using corrosion-resistant fasteners.

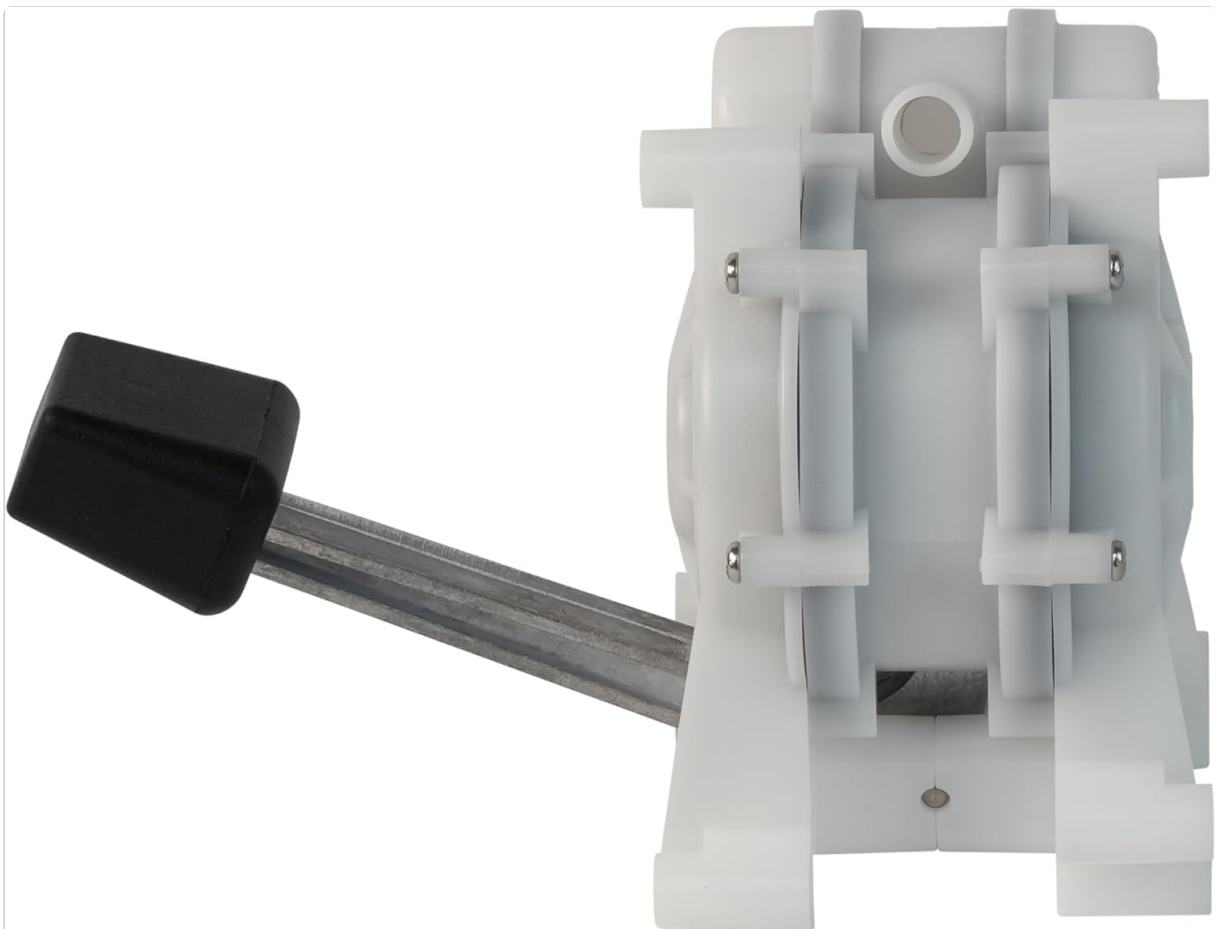


Figure 1: Side view of the Whale Gusher Galley Mk3 pump, showing the foot lever and general pump structure. This view is helpful for understanding mounting orientation and hose connection points.

4.3 Hose Connections

The pump features multi-directional inlet and outlet ports. Connect the water supply hose to the inlet and the delivery hose to the outlet. Ensure all hose clamps are tightened securely to prevent leaks.

- Use hoses of appropriate diameter for optimal flow.
- Avoid kinks or sharp bends in the hoses that could restrict water flow.
- This pump is ideal as a priming pump for Whale inline impeller electric pumps.



Figure 2: Top-down view of the Whale Gusher Galley Mk3 pump, illustrating the positions of the inlet and outlet ports for hose attachment.

5. OPERATING INSTRUCTIONS

The Whale Gusher Galley Mk3 pump is designed for simple, hands-free operation.

1. Ensure the water source is available and the outlet hose is directed to the desired location (e.g., sink, bucket).
2. Place your foot on the pump's lever.
3. Press the foot lever down and release it. The pump operates with a smooth, double action, delivering water on both the downstroke and upstroke.
4. Continue pumping until the desired amount of water is dispensed.
5. The pump is self-priming and can be operated dry without causing damage, though continuous dry operation is not recommended.

6. MAINTENANCE

Regular maintenance ensures the longevity and optimal performance of your Whale Gusher Galley Mk3 pump.

- **Inspection:** Periodically check all hose connections for tightness and signs of wear or leaks.
- **Cleaning:** If using the pump in saltwater, flush it with fresh water after each use to prevent salt buildup.

- **Winterization:** In freezing conditions, ensure the pump and associated plumbing are completely drained to prevent ice damage.
- **Pre-filter Recommendation:** To prevent small debris (like weeds) from lodging under the rubber valve surface and causing loss of prime, consider installing a simple pre-filter on the inlet hose.

7. TROUBLESHOOTING

Problem	Possible Cause	Solution
Pump loses prime or does not pump water.	<ul style="list-style-type: none"> • Air leak in inlet hose or connections. • Debris lodged in valves. • Insufficient water in source. 	<ul style="list-style-type: none"> • Check all inlet hose connections for tightness. • Inspect and clean pump valves for any obstructions. • Ensure water source is not empty.
Water leaks from pump or connections.	<ul style="list-style-type: none"> • Loose hose clamps. • Damaged O-rings or seals. • Cracked pump housing. 	<ul style="list-style-type: none"> • Tighten all hose clamps. • Inspect and replace any worn or damaged O-rings/seals. • Contact Whale support if housing is cracked.
Pump is noisy or squeaks during operation.	<ul style="list-style-type: none"> • Lack of lubrication in moving parts. • Loose mounting. 	<ul style="list-style-type: none"> • Apply a small amount of marine-grade lubricant to moving parts as per manufacturer's guidelines (if available). • Ensure the pump is securely mounted.

8. SPECIFICATIONS

Brand	Whale
Model Number	GP0551
Color	White
Material	Plastic
Style	Bilge (Galley Pump)
Product Dimensions (L x W x H)	10.24"L x 7.09"W x 5.91"H
Item Weight	0.76 Kilograms
Power Source	Manual Winding (Foot Operated)
Maximum Flow Rate	4 Gallons Per Minute (15 Liters Per Minute)
Maximum Lifting Height	3 Meters
GTIN / UPC	766478055101

9. WARRANTY AND SUPPORT

The Whale Gusher Galley Mk3 pump is backed by a **5-year warranty**, reflecting Whale's commitment to quality and durability. EU spare part availability is also guaranteed for 5 years.

For technical assistance, warranty claims, or to inquire about spare parts, please contact Whale customer support through their official website or authorized distributors. When contacting support, please have your model number (GP0551) and purchase information readily available.

Whale Official Website: www.whalepumps.com