

[Manuals.plus](#) /

> [CORTINA](#) /

> Cortina Electric Towel Warmer with Analog Thermostat, 750W (Model: 1CO0000137548) - Instruction Manual

CORTINA 1CO0000137548

Cortina Electric Towel Warmer with Analog Thermostat, 750W (Model: 1CO0000137548)

Instruction Manual

1. INTRODUCTION

This manual provides essential information for the safe and efficient installation, operation, and maintenance of your Cortina Electric Towel Warmer. Please read these instructions carefully before installation and use, and retain them for future reference. This electric towel warmer is designed to heat towels and contribute to bathroom warmth, featuring 27 horizontal bars and an analog thermostat for temperature control.





Figure 1.1: Front view of the Cortina Electric Towel Warmer.

2. SAFETY INFORMATION

Important: Always follow basic safety precautions when using electrical appliances to reduce the risk of fire, electric shock, and injury.

- Ensure the power supply voltage matches the rating label on the appliance (230V).
- Do not operate the towel warmer with a damaged cord or plug.
- This appliance is rated IP24, indicating protection against splashing water. It is suitable for bathroom use but should not be submerged in water.
- Installation must be performed by a qualified electrician in accordance with local wiring regulations.
- Do not cover the towel warmer with clothing or other materials that could obstruct heat dissipation, as this may cause overheating.

- Keep children and pets away from the appliance when it is in operation.
- Disconnect the appliance from the power supply before cleaning or maintenance.

3. PACKAGE CONTENTS

Verify that all components are present and undamaged upon unpacking:

- Cortina Electric Towel Warmer (1 unit)
- Wall mounting kit (screws, anchors, brackets)
- Multilingual instruction manual (English, French, German, Spanish, Portuguese, Italian)



Figure 3.1: Included wall mounting kit components.

4. SETUP AND INSTALLATION

The towel warmer is pre-filled with thermoconvector liquid and ready for installation. A wall mounting kit is included for secure attachment.

1. **Choose Location:** Select a suitable wall location in your bathroom, ensuring it is away from direct water spray and within reach of a power outlet. Maintain minimum distances from walls and other objects as specified in the diagrams.
2. **Mark Drilling Points:** Use the provided template or measure carefully to mark the drilling points for the wall brackets.
3. **Drill Holes:** Drill holes of the appropriate size for the wall anchors.
4. **Install Brackets:** Insert the anchors and securely fasten the wall brackets using the screws provided.
5. **Mount Towel Warmer:** Carefully lift and attach the towel warmer to the installed wall brackets. Ensure it is level and securely fixed.
6. **Connect Power:** Plug the Schuko plug into a grounded electrical outlet.

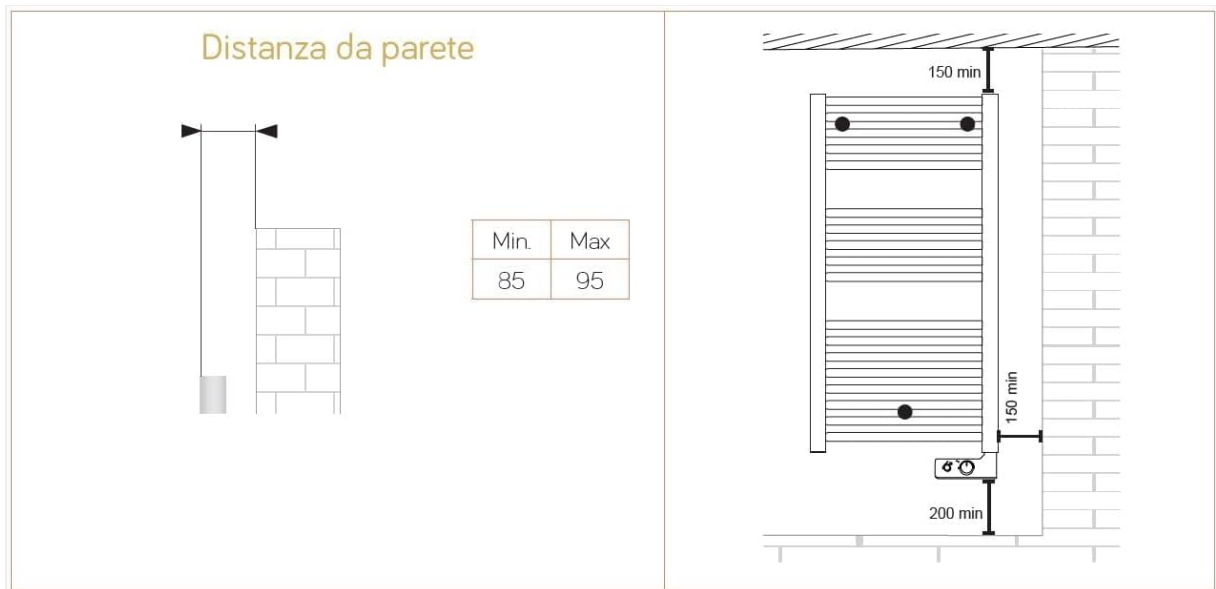


Figure 4.1: Minimum wall distances for proper installation. Ensure at least 150mm from top/sides and 200mm from bottom to floor.

5. OPERATING INSTRUCTIONS

The Cortina Electric Towel Warmer features an integrated analog thermostat for easy control.

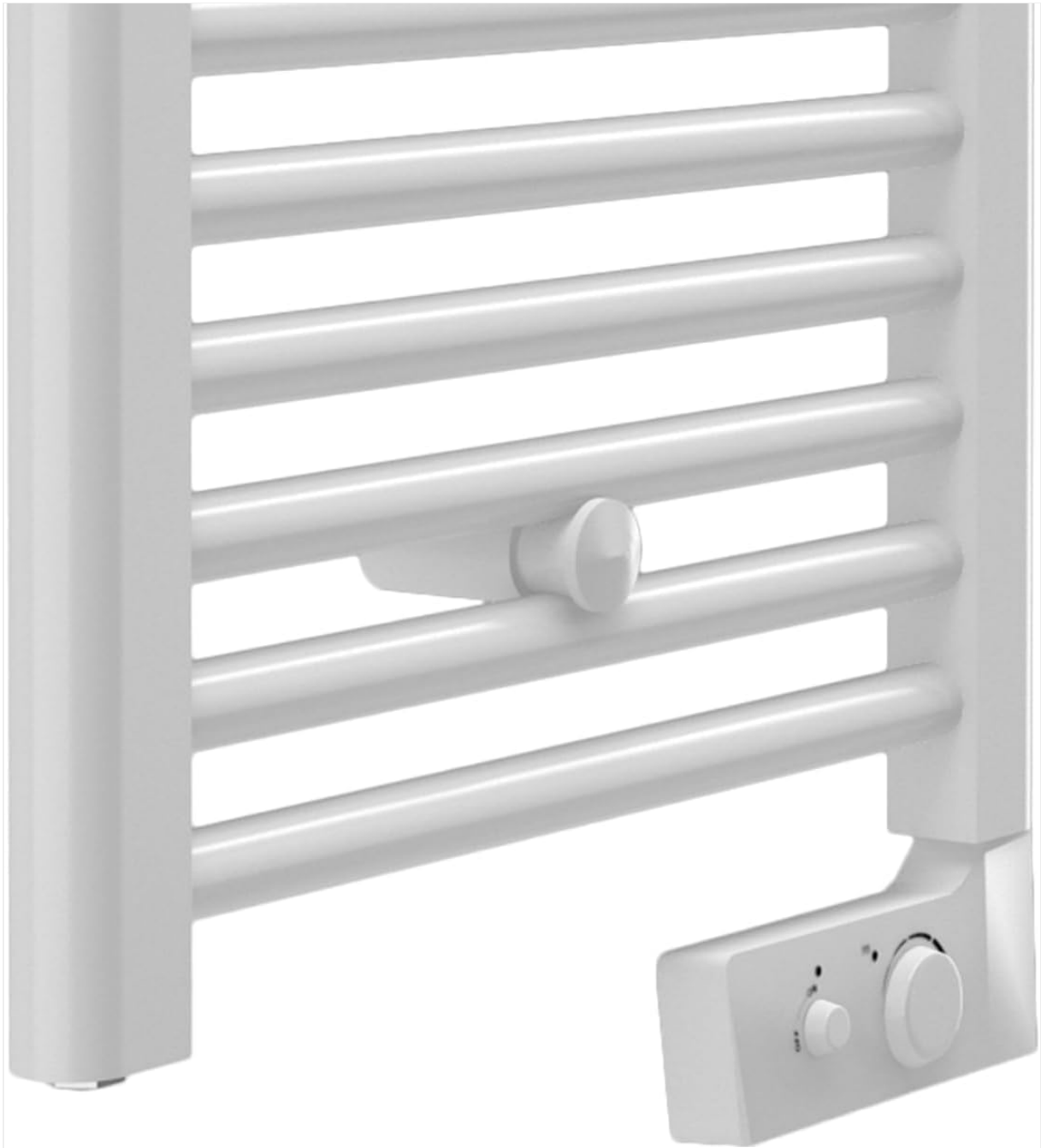


Figure 5.1: Analog thermostat control panel.

Bianco RAL 9016 - dritto

Codice	Altezza mm	Largh. mm	Peso kg	Resistenza watt	Resistenza kcal/h	Resistenza btu	Attivazione limitatore °C
388088	720	400	7,7	300	258	1024	90
388089	920	480	9,4	500	430	1706	95
388090	1375	480	14,7	750	649	2559	100
388091	1703	550	22,1	1000	860	3412	105

FUNZIONI PRINCIPALI DEL TERMOSTATO ANALOGICO

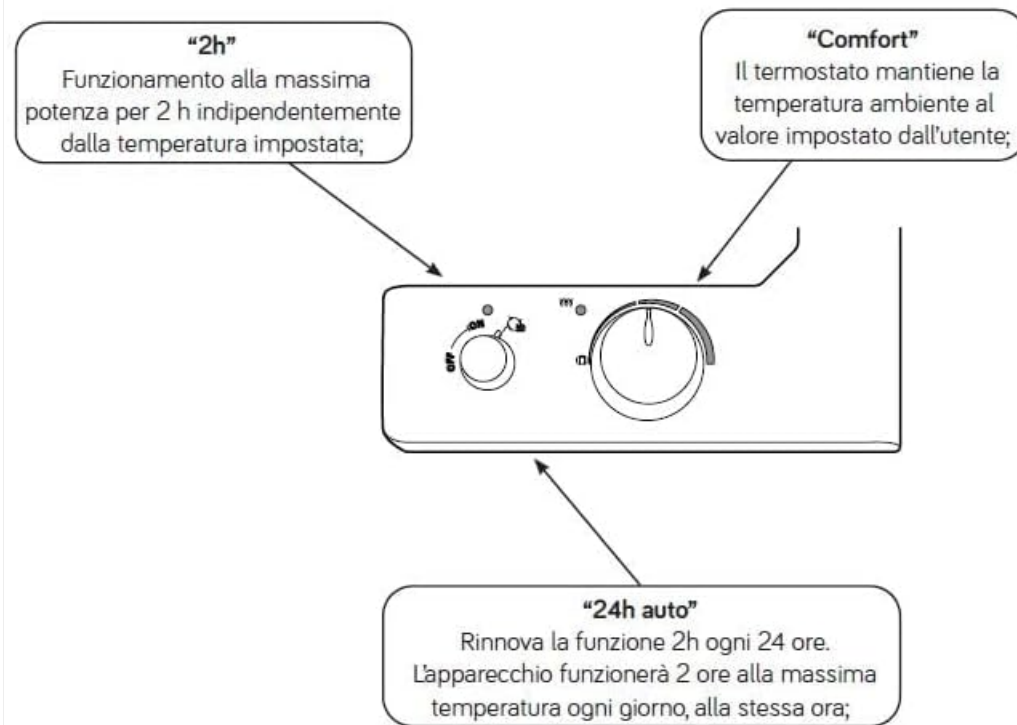


Figure 5.2: Thermostat function diagram.

- **Power On/Off:** Use the main switch (often labeled 'OFF' or with a dot) to turn the unit on or off.
- **Temperature Control:** The rotary knob allows you to set the desired ambient temperature. The thermostat will maintain this temperature.
- **'2h' Function:** Activates maximum heating power for 2 hours, independent of the set temperature. Useful for rapid towel drying or quick bathroom warming.
- **'Comfort' Mode:** The thermostat maintains the ambient temperature at the value set by the user.
- **'24h auto' Function:** Repeats the '2h' function every 24 hours. The appliance will operate at maximum power for 2 hours each day at the same time it was activated.

6. MAINTENANCE

Regular maintenance ensures optimal performance and longevity of your towel warmer.

- **Cleaning:** Disconnect from power before cleaning. Wipe the surface with a soft, damp cloth. Do not use abrasive cleaners, solvents, or harsh chemicals, as these can damage the finish.
- **Inspection:** Periodically check the power cord and plug for any signs of damage. If damage is found, discontinue use and contact a qualified technician.
- No internal maintenance is required by the user. The unit is pre-filled with liquid and sealed.

7. TROUBLESHOOTING

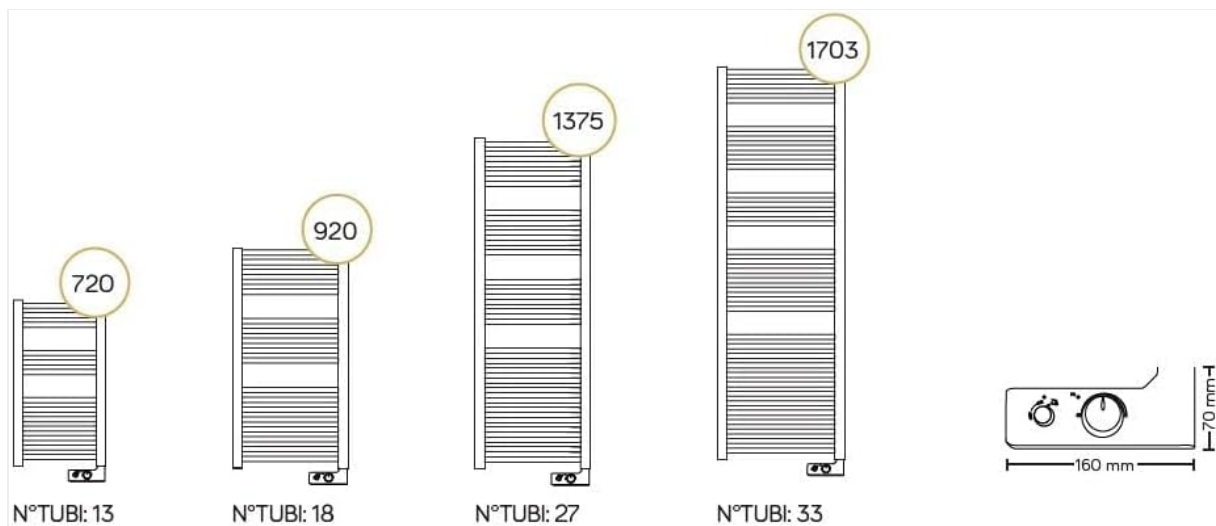
If your towel warmer is not functioning as expected, refer to the following common issues and solutions:

- **No Heat:**
 - Check if the unit is properly plugged into a working electrical outlet.
 - Ensure the main power switch on the thermostat is in the 'ON' position.
 - Verify that the thermostat temperature setting is above the current room temperature.
 - Check your household's circuit breaker or fuse box.
- **Insufficient Heat:**
 - Ensure no objects are covering the towel warmer, obstructing heat dissipation.
 - Allow sufficient time for the unit to reach the desired temperature, especially in colder environments.
- **Unusual Noises:**
 - Minor expansion and contraction noises are normal during heating and cooling.
 - If loud or persistent unusual noises occur, disconnect the unit and contact support.

If these steps do not resolve the issue, contact customer support for assistance.

8. SPECIFICATIONS

Feature	Specification
Model	1CO0000137548
Brand	CORTINA
Dimensions (H x W x D)	137.5 x 48 x 4 cm
Weight	14.7 kg
Material	Carbon Steel
Color	White
Wattage	750 W
Voltage	230 V
Power Type	AC/DC
Number of Bars	27 (arranged in 5+5+5+12 sections)
Bar Diameter	22 mm
Protection Rating	IP24
Electrical Class	Class 2
Cable Length	Approx. 1000 mm with Schuko plug
Included Components	Wall mounting kit, Multilingual manual, Towel warmer



Descrizione	Dritto
Materiale	Acciaio al carbonio
Tubi - Ø	22x0,9
Collettori - mm	Profilo a «D» 40x30x1,5
Fissaggi a muro	3
Temperatura max d'esercizio	75 °C
Verniciatura	A polveri epossipoliestere
Imballo	Scatola in cartone e protezioni in polistirolo
Grado di protezione	IP24
Isolamento elettrico	Classe 2
Alimentazione	230V - 50Hz
Protezione resistenza	Limitatore di temperatura
Cavo	Dritto con spina shuko. Lunghezza 1000 mm ca.
Dotazione di serie	1 kit di fissaggi a muro

Figure 8.1: Detailed technical specifications, including dimensions and power ratings for different models.

9. WARRANTY AND SUPPORT

For warranty information, please refer to the specific terms and conditions provided at the point of purchase or contact your retailer. For technical support or inquiries regarding your Cortina Electric Towel Warmer, please contact Cortina customer service through their official website or the contact details provided in your purchase documentation.