

Manuals+

[Q & A](#) | [Deep Search](#) | [Upload](#)

[manuals.plus](#) /

› [Rabbit Air](#) /

› [Rabbit Air BioGS 2.0 Air Purifier \(SPA-550A\) User Manual](#)

Rabbit Air SPA-550A

Rabbit Air BioGS 2.0 Air Purifier

MODEL: SPA-550A USER MANUAL

1. Introduction

Thank you for choosing the Rabbit Air BioGS 2.0 Air Purifier. This advanced system is designed to significantly improve your indoor air quality by effectively removing allergens, pollutants, odors, and harmful particles. Featuring a 4-stage filtration and deodorization process, including a BioGS HEPA filter and activated carbon filter, the SPA-550A is engineered for quiet operation and long-lasting performance. Please read this manual thoroughly to ensure proper setup, operation, and maintenance of your air purifier.





Figure 1: Front view of the Rabbit Air BioGS 2.0 Air Purifier.

2. Important Safety Instructions

To reduce the risk of fire, electric shock, or injury, always follow these basic safety precautions:

- Read all instructions before operating the appliance.
- Always unplug the air purifier before moving, cleaning, or performing any maintenance.
- Do not operate any appliance with a damaged cord or plug. If the cord or plug is damaged, contact customer support.
- Keep the power cord away from heated surfaces.
- Do not use the air purifier outdoors or on wet surfaces.
- Do not block air openings or place the unit on a soft surface where openings may be blocked.
- Do not insert foreign objects into any ventilation or exhaust opening.
- This appliance has a polarized plug (one blade is wider than the other). To reduce the risk of electric shock, this plug is intended to fit in a polarized outlet only one way. If the plug does not fit fully in the outlet, reverse the plug. If it still

does not fit, contact a qualified electrician. Do not attempt to defeat this safety feature.

3. Product Overview

The BioGS 2.0 Air Purifier features an intuitive design with easy-to-access controls and indicators. Familiarize yourself with the main components and functions:



Figure 2: Top control panel and indicators.

Components:

- **Air Outlet:** Where purified air is released.
- **Remote Holder:** Convenient storage for the remote control.
- **Control Button:** Main power and mode selection.
- **Air Quality Indicator:** LED lights indicating current air quality.
- **Fan Speed Indicators:** Displays the current fan speed setting (1-5).
- **Timer Indicators:** Shows active timer settings.
- **Negative Ion On/Off:** Indicator for the negative ionizer function.
- **Air Intake:** Located on both sides and bottom for efficient air circulation.
- **Air Quality Sensor:** Detects odors and particles in the air.



Figure 3: Various views of the BioGS 2.0 Air Purifier.

4. Initial Setup

Follow these steps to set up your BioGS 2.0 Air Purifier:

1. **Unpack the Unit:** Carefully remove the air purifier from its packaging. Retain packaging for future transport or storage.
2. **Filter Installation:** The filters are typically pre-installed. However, ensure all protective plastic packaging is removed from the filters before first use. Refer to the 'Maintenance' section for filter access.
3. **Placement:** Place the air purifier on a firm, level surface. Ensure there is adequate space around the unit (at least 6 inches from walls or furniture) for optimal air intake and output. Avoid placing it near heat sources or in direct sunlight.
4. **Power Connection:** Plug the power cord into a standard electrical outlet.



Figure 4: Recommended placement in a living room setting.

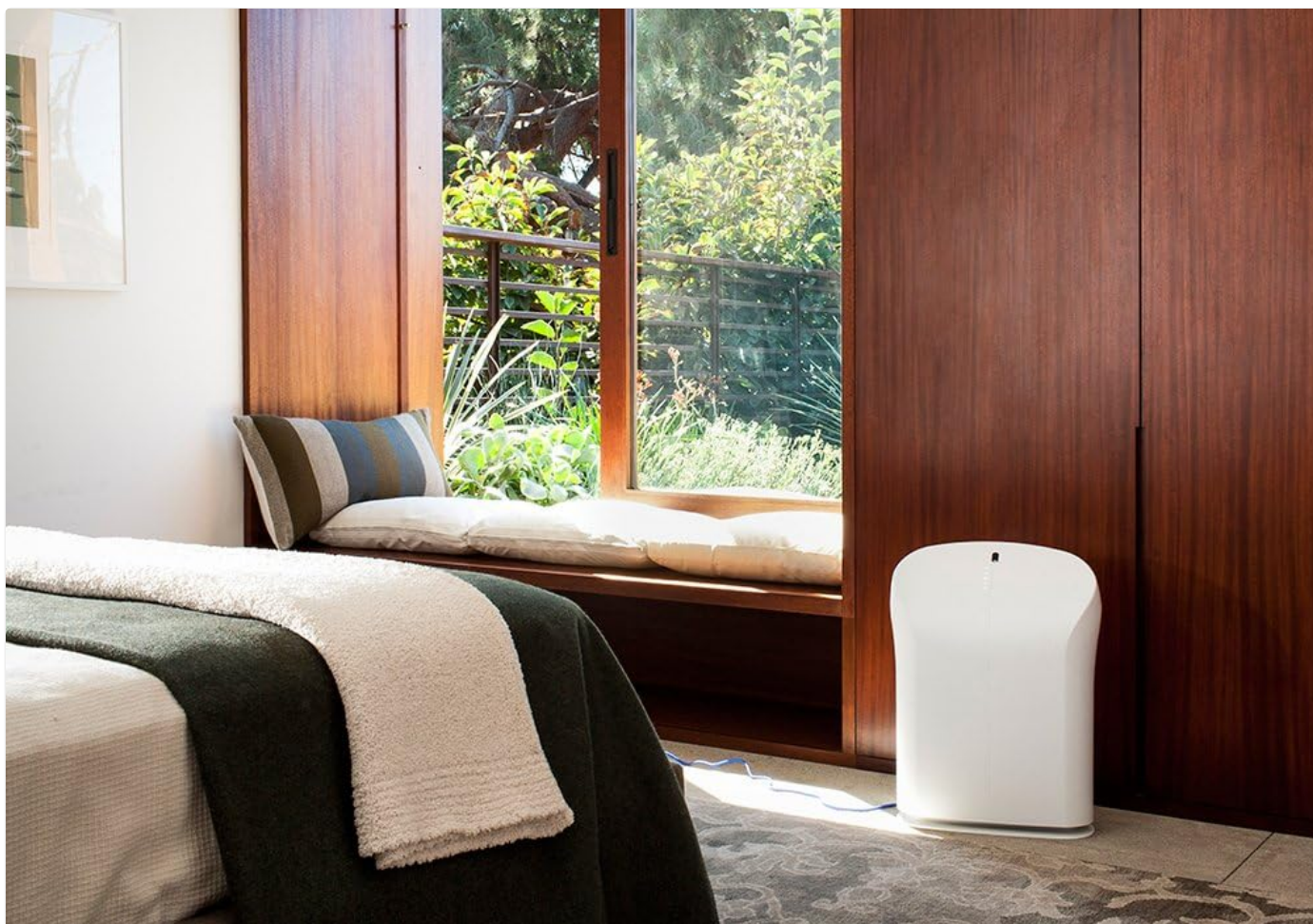


Figure 5: Recommended placement in a bedroom setting.

5. Operating Instructions

The BioGS 2.0 can be operated using the control panel on the unit or the included remote control.



Figure 6: Remote control for the BioGS 2.0 Air Purifier.

5.1. Power On/Off

Press the power button (usually indicated by a circle with a vertical line) on the control panel or remote to turn the unit on or off.

5.2. Fan Speed Adjustment

The unit has five adjustable fan speeds. Press the fan speed button (often depicted as a gear or fan icon) repeatedly to cycle through the speeds. The corresponding LED indicators will illuminate.

5.3. Auto Mode

Activate Auto Mode by pressing the dedicated button (often an 'A' or circular arrow icon). In this mode, the air purifier automatically adjusts the fan speed based on the detected air quality, optimizing performance and energy consumption.

5.4. Timer Function

Use the timer button (clock icon) to set the operating duration. You can typically set the unit to run for a specific number of hours before automatically turning off.

5.5. Negative Ion Function

The negative ionizer can be turned on or off by pressing its respective button (often a smiling face or wave icon). This function helps to freshen the air by releasing negative ions.

5.6. Air Quality Indicator

The LED lights on the control panel provide a visual indication of the current air quality, allowing you to monitor your environment at a glance.

6. Maintenance and Care

Regular maintenance ensures optimal performance and extends the lifespan of your air purifier.

6.1. Pre-Filter Cleaning

The washable pre-filter captures larger particles. It should be cleaned regularly, typically once a month or as needed. To clean:

1. Unplug the unit.
2. Remove the front panel and carefully detach the pre-filter.
3. Vacuum the pre-filter with a brush attachment or rinse it under cool running water.
4. Allow the pre-filter to air dry completely before reinstalling.

6.2. HEPA and Activated Carbon Filter Replacement

The BioGS HEPA and Charcoal-Based Activated Carbon Filters are designed to last up to three years with 12-hour daily use. Filter life may vary based on usage and air quality. Replace filters when the filter indicator light illuminates or when you notice a decrease in performance or an increase in odors.

1. Unplug the unit.
2. Remove the front panel and old filters.
3. Install new genuine Rabbit Air replacement filters, ensuring they are correctly seated.
4. Reset the filter life indicator according to the instructions provided with the replacement filters or in the full user manual.

6.3. General Cleaning

Wipe the exterior of the unit with a soft, dry cloth. Do not use abrasive cleaners or solvents. Ensure the unit is unplugged before cleaning.

7. Troubleshooting Guide

Refer to this table for common issues and their solutions:

Problem	Possible Cause	Solution
Unit does not turn on.	No power, power cord loose, unit not plugged in.	Check power connection, ensure outlet is functional.
Weak airflow.	Clogged pre-filter, dirty HEPA/Carbon filters.	Clean pre-filter, replace HEPA/Carbon filters.
Unusual noise.	Foreign object in fan, unit not on a level surface.	Unplug and check for obstructions. Place on a stable surface.

Problem	Possible Cause	Solution
Odor persists.	Activated carbon filter saturated, source of odor too strong.	Replace activated carbon filter. Identify and remove odor source.

8. Technical Specifications

Feature	Specification
Model Number	SPA-550A
Product Dimensions (D x W x H)	9.8" x 16.6" x 22.2"
Weight	16.8 Pounds
Recommended Floor Area	Up to 550 Square Feet
Noise Level	25 Decibels (at lowest setting)
Wattage	39 watts
Filter Lifespan	Up to 3 years (HEPA & Activated Carbon, 12-hour daily use)

9. Warranty and Customer Support

Rabbit Air stands behind the quality of its products. The BioGS 2.0 Air Purifier comes with an industry-leading five-year warranty, covering defects in materials and workmanship under normal use.

For technical assistance, warranty claims, or general inquiries, Rabbit Air offers 24/7 lifetime technical support. Please visit the official Rabbit Air website or refer to the contact information provided in your product packaging for the most current support details.

Online Resources: For additional information, FAQs, and filter purchasing, please visit the [Rabbit Air Store on Amazon](#).





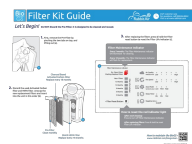
[Rabbit Air BioGS 2.0 Ultra Quiet Air Purifier Owner's Manual and Safety Guide](#)

Comprehensive owner's manual and safety information for the Rabbit Air BioGS 2.0 Ultra Quiet Air Purifier (Models SPA-550A, SPA-625A), covering setup, operation, maintenance, and warranty.



[Rabbit Air Purifiers: Advanced Technology for Cleaner Indoor Air](#)

Explore Rabbit Air's range of advanced air purifiers, featuring BioGS HEPA filtration, activated carbon technology, smart features, and customizable designs for healthier indoor environments. Learn about models like A3, MinusA2, and BioGS 2.0.



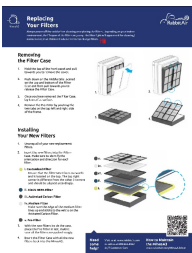
[Rabbit Air BioGS Filter Kit Guide: Replacement and Maintenance](#)

A comprehensive guide for replacing and maintaining filters in the Rabbit Air BioGS air purifier. Includes step-by-step instructions, filter life indicator explanations, and reset procedures.



[Rabbit Air MinusA2 SPA-780N Ultra Quiet Air Purifier Owner's Manual](#)

Comprehensive owner's manual for the Rabbit Air MinusA2 SPA-780N Ultra Quiet Air Purifier, covering setup, operation, maintenance, safety precautions, and warranty information.



[Rabbit Air MinusA3 Filter Replacement Guide](#)

Step-by-step instructions for replacing filters in the Rabbit Air MinusA3 air purifier, including filter order and installation tips for optimal indoor air quality.



[Rabbit Air MinusA2 Ultra Quiet Air Purifier Owner's Manual](#)

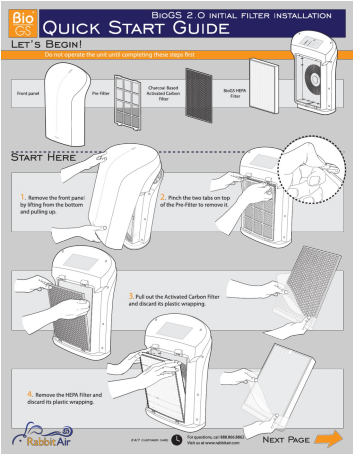
Comprehensive owner's manual for the Rabbit Air MinusA2 Ultra Quiet Air Purifier, covering setup, operation, maintenance, troubleshooting, and warranty information for models SPA-700A and SPA-780A.



[pdf] User Manual Owner's Manual

Provided by ManualsAndMore Download User Manual Rabbit Air SPA 550A Owner s rabbit air spa550a owners manual 2 manualsandmore |||

Ultra Quiet Air Purifier Hello Owner s manual Models: **SPA-550A** SPA-625A 24/7 customer care Copyright Rabbit Air 2016. All rights reserved For Questions: Call 888.866.8862 Visit us at www.rabbitair.com BIOGS2UM1603 Hello there Meet your brand new BioGS We hope that this stylish bundle o...
lang:en score:44 filesize: 3.76 M page_count: 12 document date: 2019-07-23



[pdf] Quick Start Guide Guide

rabbit air biogs2 spa 550a purifier quick start guide sylvane media documents products ...

lang:en score:33 filesize: 2.08 M page_count: 2 document date: 0000-00-00



[pdf] Specifications

Rabbit Air SPA 550A ENERGY STAR Certified Purifiers Cleaners v2.0 certification information for Product ID 2360937 Specification Version 2 2021 12 19 energystar gov productfinder product certified room air cleaners details export |||

ENERGY STAR CERTIFIED Air Purifiers Cleaners Rabbit Air - **SPA-550A** : **SPA-550A** Specifications ENERGY STAR Unique ID: 2360937 Brand Name: Rabbit Air Model Number: **SPA-550A** Model Name: **SPA-550A** Annual Energy Use kWh/year : 162.7274286 Partial On Mode Power Watts : 0.3 Room Size sq.f...
lang:en score:31 filesize: 19.33 K page_count: 1 document date: 2021-12-19



[\[pdf\]](#) Specifications

Rabbit Air SPA 550A ENERGY STAR Certified Purifiers Cleaners v2 0 certification information for Product ID 2360937 Specification Version 2 2021 12 17 energystar gov productfinder product certified room air cleaners details export |||

ENERGY STAR CERTIFIED Air Purifiers Cleaners Rabbit Air - **SPA-550A** : **SPA-550A** Specifications ENERGY STAR Unique ID: 2360937 Brand Name: Rabbit Air Model Number: **SPA-550A** Model Name: **SPA-550A** Annual Energy Use kWh/year : 162.7274286 Partial On Mode Power Watts : 0.3 Room Size sq.f...

lang:en score:31 filesize: 19.33 K page_count: 1 document date: 2021-12-17



[\[pdf\]](#) User Manual Owner's Manual

Provided by ManualsAndMore Download User Manual Rabbit Air SPA 550A Owner s rabbit air spa550a owners manual 3 manualsandmore |||

...

lang:en score:30 filesize: 4.84 M page_count: 13 document date: 2019-07-23



[\[pdf\]](#) User Manual Owner's Manual

Provided by ManualsAndMore Download User Manual Rabbit Air SPA 550A Owner s rabbit air spa550a owners manual 1 manualsandmore |||

...

lang:en score:30 filesize: 4.85 M page_count: 13 document date: 2019-07-23



[\[pdf\]](#) User Manual Owner's Manual Warranty

biogs2 web english Owner Manual Rabbit Air Console Purifier for 625 Cubic Feet with Yes w001763289

SPA 625AWOwner w001763339 625AWRabbit 625AWLRabbit 625AWBowner manualowner

manualesecure img1 ag wfcdn dm document e366f081 8bb6 4585 93ae 4fdc6e8ad994 owner manual |||

Ultra Quiet Air Purifier Hello Owner s manual Models: **SPA-550A** SPA-625A 24/7

customer care Copyright Rabbit Air 2017. All rights reserved For Questions: Call

888.866.8862 Visit us at www.rabbitair.com BIOGS2UM1710 Hello there Meet your

brand new BioGS We hope that this stylish bundle of ...

lang:en score:28 filesize: 3.82 M page_count: 13 document date: 2018-12-18



[\[pdf\]](#) User Manual Owner's Manual

Sylvane rabbit air biogs2 spa 550a purifier owners manual assets sylvane media documents products

...

lang:en score:27 filesize: 4.8 M page_count: 13 document date: 0000-00-00



[\[pdf\]](#) User Manual Owner's Manual

Provided by ManualsAndMore Download User Manual Rabbit Air SPA 550A Owner s SPA550A Owners manualsandmore |||

...

lang:en score:27 filesize: 5.4 M page_count: 13 document date: 2019-07-23



[\[pdf\]](#) User Manual Owner's Manual

biogs2 english 20160329 Web Ultra Quiet Air Purifier Hello! General Safety Information About Your BioGS Please read all tips and warnings before using your Rabbit purifier Use only as directed by the Owner s Manual SPA 550A 625A Purifier Owners allergycontrol images art |||

Ultra Quiet Air Purifier Hello Owner s manual Models: **SPA-550A** SPA-625A 24/7 customer care Copyright Rabbit Air 2016. All rights reserved For Questions: Call 888.866.8862 Visit us at www.rabbitair.com BIOGS2UM1603 Hello there Meet your brand new BioGS We hope that this stylish bundle o...

lang:en score:27 filesize: 3.79 M page_count: 12 document date: 2016-05-03



[\[pdf\]](#) User Manual Owner's Manual

biogs2 english 20160329 Web Hello! National Allergy SupplyWhen transporting the Rabbit Air purifier always hold handle on back of unit Inverter lighting equipment or electronic light fixtures may SPA 550A and SPA 625A Purifier Owners Manualnatallergy images art Manual srsltid

AfmBOoP5CQsYfPH5ou3GM9cnAYvwuUdwPZzjGB1O7NI1mhAlmReGebr SupplyHello! may When ManualSPA AfmBOoP5CQsYfPH5ou3GM9cnAYvwuUdwPZzjGB1O7NI1mhAlmReGebrnatallergy AfmBOOrDFrvdOW e7uny4Y75wPII6XjGLmuhCLi4z7pXp8AFQ pmkubb may This appliance has a polarized plug one blade is wider than other To reduce risk electric shock this intended to fit in polarized SPA pmkubbnatlallergy AfmBOop67ypN1uUPZrYj XNb3WmcfvcDMMWehyIQ3u7S9S7PUf Bu2o polarized The BioGS air childproof feature quality sensors control button for fan speeds modes It indoor use onlySPA Bu2onatlallergy AfmBOopH2RWcv8h2b918MNoZ m1EfmLp6NBQisAogqsmCJKn9t7IRYcc |||

Ultra Quiet Air Purifier Hello Owner s manual Models: **SPA-550A** SPA-625A 24/7 customer care Copyright Rabbit Air 2016. All rights reserved For Questions: Call 888.866.8862 Visit us at www.rabbitair.com BIOGS2UM1603 Hello there Meet your brand new BioGS We hope that this stylish bundle o...

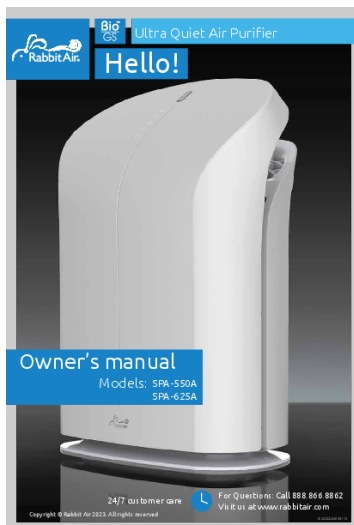
lang:en score:25 filesize: 3.79 M page_count: 12 document date: 2016-05-03



[Rabbit Air BioGS 2.0 Ultra Quiet Air Purifier Owner's Manual and Safety Guide](#)

Comprehensive owner's manual and safety information for the Rabbit Air BioGS 2.0 Ultra Quiet Air Purifier (Models SPA-550A, SPA-625A), covering setup, operation, maintenance, and warranty.

lang:en score:24 filesize: 8.28 M page_count: 13 document date: 2021-05-30



[\[pdf\] User Manual Owner's Manual Warranty](#)

biogs2 550A 625A web230712 BioGS 2 0 User Manual Ultra Quiet Air Purifier Rabbit manual 2307 16183738730759682591 cdn shopify s files 1 0260 5699 |||

Ultra Quiet Air Purifier Hello Owner s manual Models: **SPA-550A** SPA-625A 24/7 customer care Copyright Rabbit Air 2023. All rights reserved For Questions: Call 888.866.8862 Visit us at www.rabbitair.com BIOGS2UM230712 Hello there Meet your brand new BioGS We hope that this stylish bundle o...


lang:en score:24 filesize: 3.82 M page_count: 13 document date: 2023-07-12

[\[pdf\] Warranty Label](#)

Product Warranty Agreement EC WA Form CA Forms Rabbit Air 4157685387369632521 cdn shopify s files 1 0260 5699 |||

Rabbit Air 9242 1/2 Hall Road Downey, CA 90241 Phone: 562-861-4688 Fax: 562-861-4788 ... est for the return: Serial Number on back or bottom of unit : Model Number check one : SPA-421A **SPA-550A** SPA-700A AP-1004 SPA-582A SPA-625A SPA-780A Please describe the issue you are experien...

lang:en score:23 filesize: 83.75 K page_count: 2 document date: 2016-05-04



9242 1/2 Hall Road
Downey, CA 90241
Phone: 562-861-4688
Fax: 562-861-4788

Return Authorization for Refund or Exchange

Return Authorization Number (RA): _____

First Name: _____

Last Name: _____

Serial Number (located on the back or bottom of the unit): _____

Model Number (check one): ☐ SPA-550A ☐ SPA-780A
☐ SPA-625A ☐ SPA-700A

Please state your reason for return:

☐ Exchange ☐ Did not help my allergies or situation
☐ Physical size is bigger than I thought ☐ Too complicated to use
☐ Quality is not as good as I thought ☐ Price is high for the value
☐ Other: _____


Please give us feedback so how we could have changed or improved your Rabbit Air experience.

For Office Use Only (To be completed by Rabbit Air)
Date of receiving the returned product: _____
Parts Returned: _____
Inspection Result: _____

[\[pdf\]](#) Warranty

Product Warranty Agreement EC RA Form CA Forms Rabbit Air 4157685387369632521 cdn shopify s files 1 0260 5699 |||

Rabbit Air 9242 Hall Road Downey, CA 90241 Phone: 562-861-4688 Fax: 562-861-4788 _____ ... Last Name: Serial Number located on the back or bottom of the unit : Model Number check one : **SPA-550A** SPA-625A Please state your reason for return. Exchange Physical size is bigger than I thoug...
lang:en score:23 filesize: 88.34 K page_count: 2 document date: 2016-05-04



9242 1/2 Hall Road
Downey, CA 90241
Phone: 562-861-4688
Fax: 562-861-4788

Request for Warranty Service

Warranty Authorization Number (WA): _____

First Name: _____

Last Name: _____

Date of reporting the problem or request for the return: _____

Serial Number (on back or bottom of unit): _____

Model Number (check one): ☐ SPA-421A ☐ SPA-550A ☐ SPA-780A ☐ AP-1004
☐ SPA-625A ☐ SPA-700A


Please describe the issue you are experiencing with your Rabbit Air:

For Office Use Only (To be completed by Rabbit Air)
Date of receiving the returned product: _____
Parts Returned: _____
Inspection Result: _____

[\[pdf\]](#) Warranty Label

Product Warranty Agreement EC WA Form Free Shipping Forms Rabbit Air 4157685387369632521 cdn shopify s files 1 0260 5699 |||

Rabbit Air 9242 1/2 Hall Road Downey, CA 90241 Phone: 562-861-4688 Fax: 562-861-4788 _____ ... est for the return: Serial Number on back or bottom of unit : Model Number check one : SPA-421A **SPA-550A** SPA-700A AP-1004 SPA-582A SPA-625A SPA-780A Please describe the issue you are experien...
lang:en score:23 filesize: 79.54 K page_count: 2 document date: 2016-05-04



9242 1/2 Hall Road
Downey, CA 90241
Phone: 562-861-4688
Fax: 562-861-4788

Return Authorization for Refund or Exchange

Return Authorization Number (RA): _____

First Name: _____

Last Name: _____

Serial Number (located on the back or bottom of the unit): _____

Model Number (check one): ☐ SPA-550A ☐ SPA-780A
☐ SPA-625A ☐ SPA-700A

Please state your reason for return:

☐ Exchange ☐ Did not help my allergies or situation
☐ Physical size is bigger than I thought ☐ Too complicated to use
☐ Quality is not as good as I thought ☐ Price is high for the value
☐ Other: _____


Please give us feedback so how we could have changed or improved your Rabbit Air experience.

For Office Use Only (To be completed by Rabbit Air)
Date of receiving the returned product: _____
Parts Returned: _____
Inspection Result: _____

[\[pdf\]](#) Warranty

Product Warranty Agreement EC RA Form Free Shipping Forms Rabbit Air 4157685387369632521 cdn shopify s files 1 0260 5699 |||

Rabbit Air 9242 Hall Road Downey, CA 90241 Phone: 562-861-4688 Fax: 562-861-4788 _____ ... Last Name: Serial Number located on the back or bottom of the unit : Model Number check one : **SPA-550A** SPA-625A Please state your reason for return. Exchange Physical size is bigger than I thoug...
lang:en score:23 filesize: 84.12 K page_count: 2 document date: 2016-05-04



9242 1/2 Hall Road
Downey, CA 90241
Phone: 562-861-4688
Fax: 562-861-4788

Return Authorization for Refund or Exchange

Return Authorization Number (RA): _____

First Name: _____

Last Name: _____

Serial Number (located on the back of the unit): _____

Model Number (check one): ☐ SPA-550A ☐ SPA-780A
☐ SPA-625A ☐ SPA-700A

Please state your reason for return:

☐ Exchange ☐ Did not help my allergies or situation
☐ Physical size is bigger than I thought ☐ Too complicated to use
☐ Quality is not as good as I thought ☐ Price is high for the value
☐ Other: _____

Please give us feedback so how we could have changed your Rabbit Air experience.

For Office Use Only (To be completed by Rabbit Air)
Date of receiving the returned product: _____
Parts Returned: _____
Inspection Result: _____

[\[pdf\]](#)

Microsoft Word ra form Carmen Download Here Rabbit Air Authorization Forms 8460 cdn shopify s files 1 0260 5699 |||

Rabbit Air 9242 Hall Road Downey, CA 90241 Phone: 562-861-4688 Fax: 562-861-4788 _____ ... I Number located on the back of the unit : _____ Model Number check one : **SPA-550A** SPA-700A SPA-625A SPA-780A Please state your reason for return. Exchange Did not h...
lang:en score:23 filesize: 75.49 K page_count: 2 document date: 2014-01-21



Rabbit Air
9242 1/2 Hall Road
Downey, CA 90241
Phone: (562) 861-4688
Fax: (562) 861-4788

Request for Warranty Service

Warranty Authorization Number: _____

First Name: _____

Last Name: _____

Date of reporting the problem or request for the return: _____

Serial Number (on back or bottom of unit): _____

Model Number (check one): ☐ SPA-421A ☐ SPA-550A ☐ SPA-700A ☐ AP-1004
☐ SPA-582A ☐ SPA-625A ☐ SPA-780A

Please describe the issue you are experiencing with your Rabbit Air: _____

For Office Use Only (To be completed by Rabbit Air)

Date of receiving the returned product: _____

Parts Returned: _____

Inspection Result: _____

[\[pdf\]](#) Warranty Label


Product Warranty Agreement EC Download Here Rabbit Air Authorization Forms wa form nolabel 8502
cdn shopify s files 1 0260 5699 |||

Rabbit Air 9242 1/2 Hall Road Downey, CA 90241 Phone: 562-861-4688 Fax: 562-861-4788 _____ ... Number on back or bottom of unit :

_____ Model Number check one : SPA-421A **SPA-550A**

SPA-700A AP-1004 SPA-582A SPA-625A SPA-780A Please describe the issue you are experien...

lang:en **score:23** filesize: 94.01 K page_count: 2 document date: 2013-11-21



Rabbit Air
9242 1/2 Hall Road
Downey, CA 90241
Phone: (562) 861-4688
Fax: (562) 861-4788

Request for Warranty Service

Warranty Authorization Number: _____

First Name: _____

Last Name: _____

Date of reporting the problem or request for the return: _____

Serial Number (on back or bottom of unit): _____

Model Number (check one): ☐ SPA-421A ☐ SPA-550A ☐ SPA-700A ☐ AP-1004
☐ SPA-582A ☐ SPA-625A ☐ SPA-780A

Please describe the issue you are experiencing with your Rabbit Air: _____

For Office Use Only (To be completed by Rabbit Air)

Date of receiving the returned product: _____

Parts Returned: _____

Inspection Result: _____

[\[pdf\]](#) Warranty

Product Warranty Agreement EC Download Here Rabbit Air Authorization Forms wa form 8460 cdn
shopify s files 1 0260 5699 |||

Rabbit Air 9242 1/2 Hall Road Downey, CA 90241 Phone: 562-861-4688 Fax: 562-861-4788 _____ ... Number on back or bottom of unit :

_____ Model Number check one : SPA-421A **SPA-550A**

SPA-700A AP-1004 SPA-582A SPA-625A SPA-780A Please describe the issue you are experien...

lang:en **score:23** filesize: 102.47 K page_count: 2 document date: 2013-11-21

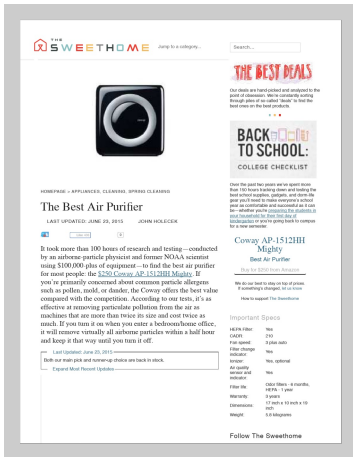


[\[pdf\]](#) User Manual Owner's Manual

BioGS 2 manual web Rabbit Air 0 Manual by clicking here US Purifiers Please read all tips and warnings before using your purifier Use only as directed the Owner s Meet brand new BioGS! We hope that rabbit air bio gs2 user usairpurifiers media Bio ULTRA QUIET AIR PURIFIER C°Rabbit HELLO! OWNER S MANUAL MODELS SPA 550A 625A 24 7 CUSTOMER CARE For Questions Call 888 866 8862 |||

...

lang:en **score:21** filesize: 4.9 M page_count: 13 document date: 2014-07-29



[pdf] Instructions

The Best Air Purifier Sweethome Smart Purifier instructions are very clear and simple Plasmacluster was quiet excelled at the particle removal test outperforming Coway We do our best to stay on top of prices If something s changed let us know How support Search HEPA Filter It took more than 100 hours research testing—conducted by an airborne physicist former NOAA scientist using \$100 000 plus equipment—to nd air purier for most people Jump a category LAST UPDATED JUNE 23 2015 JOHN HOLECEK

HOMEPAGE APPLIANCES CLEANING SPRING Test Compressed smartairfilters wordpress 2018 12

Jump to a category... Search... Our deals are hand-picked and analyzed to the point of obsession. ... at 120 sq. ft., very frequent cleaning of plates. Oreck XL -- Junk. Not HEPA. Rabbit Air BIOGS 2.0 **SPA-550A** Air Purifier -- Seems to be rebranded Coway, good customer service, brushless DC motor, CAD...

lang:en **score:17** filesize: 2.07 M page_count: 28 document date: 2019-07-17



[pdf] Catalog

catalog 1807 15820993583884287006 cdn shopify s files 1 0260 5699 |||

1 About Rabbit Air About Rabbit Air Founded in 2004 in Los Angeles, California, our company ha Calculations of savings are based on energy consumption and filter replacement costs of the BioGS **SPA-550A** versus the Honeywell 50250 with 24/7 usage. Source of energy cost: US Energy Information Ad...

lang:en **score:16** filesize: 1.41 M page_count: 16 document date: 2018-12-18



lang:it score:14 filesize: 172.17 K page count: 5 document date: 2021-12-21

BENEFIT STATE Cost-based Attribution to Products: Evaluating Products, Spreadsheets, and Analytics as a better alternative						
Product Name	Product Name	Product Name	Product Name	Product Name	Product Name	Product Name
Product A	Product B	Product C	Product D	Product E	Product F	Product G
Product H	Product I	Product J	Product K	Product L	Product M	Product N
Product O	Product P	Product Q	Product R	Product S	Product T	Product U
Product V	Product W	Product X	Product Y	Product Z	Product AA	Product AB
Product AC	Product AD	Product AE	Product AF	Product AG	Product AH	Product AI
Product AJ	Product AK	Product AL	Product AM	Product AN	Product AO	Product AP
Product AQ	Product AR	Product AS	Product AT	Product AU	Product AV	Product AW
Product AX	Product AY	Product AZ	Product BA	Product BB	Product BC	Product BD
Product BE	Product BF	Product BG	Product BH	Product BI	Product BJ	Product BK
Product BL	Product BM	Product BN	Product BO	Product BP	Product BQ	Product BR
Product BS	Product BT	Product BU	Product BV	Product BW	Product BX	Product BY
Product BZ	Product CA	Product CB	Product CC	Product CD	Product CE	Product CF
Product CG	Product CH	Product CI	Product CJ	Product CK	Product CL	Product CM
Product CN	Product CO	Product CP	Product CQ	Product CR	Product CS	Product CT
Product CU	Product CV	Product CW	Product CX	Product CY	Product CZ	Product DA
Product DB	Product DC	Product DD	Product DE	Product DF	Product DG	Product DH
Product DI	Product DJ	Product DK	Product DL	Product DM	Product DN	Product DO
Product DP	Product DQ	Product DR	Product DS	Product DT	Product DU	Product DV
Product DW	Product DX	Product DY	Product EZ	Product FA	Product FB	Product FC
Product FD	Product FE	Product FF	Product FG	Product FH	Product FI	Product FJ
Product FK	Product FL	Product FM	Product FN	Product FO	Product FP	Product FQ
Product FR	Product FS	Product FT	Product FU	Product FV	Product FW	Product FX
Product FY	Product FZ	Product GA	Product GB	Product GC	Product GD	Product GE
Product GF	Product GH	Product GI	Product GJ	Product GK	Product GL	Product GM
Product GN	Product GO	Product GP	Product GQ	Product GR	Product GS	Product GT
Product GU	Product GV	Product GW	Product GX	Product GY	Product GZ	Product HA
Product HB	Product HC	Product HD	Product HE	Product HF	Product HG	Product HH
Product HI	Product HJ	Product HK	Product HL	Product HM	Product HN	Product HO
Product HP	Product HQ	Product HR	Product HS	Product HT	Product HU	Product HV
Product HW	Product HX	Product HY	Product HZ	Product IA	Product IB	Product IC
Product ID	Product IE	Product IF	Product IG	Product IH	Product II	Product IJ
Product IK	Product IL	Product IM	Product IN	Product IO	Product IP	Product IQ
Product IR	Product IS	Product IT	Product IU	Product IV	Product IW	Product IX
Product IY	Product IZ	Product JA	Product JB	Product JC	Product JD	Product JE
Product JF	Product JG	Product JH	Product JI	Product JJ	Product JK	Product JL
Product JM	Product JN	Product JO	Product JP	Product JQ	Product JR	Product JS
Product JT	Product JU	Product JV	Product JW	Product JX	Product JY	Product JZ
Product KA	Product KB	Product KC	Product KD	Product KE	Product KF	Product KG
Product KH	Product KI	Product KJ	Product KK	Product KL	Product KM	Product KN
Product KO	Product KP	Product KQ	Product KR	Product KS	Product KT	Product KU
Product KV	Product KW	Product KX	Product KY	Product KZ	Product LA	Product LB
Product LC	Product LD	Product LE	Product LF	Product LG	Product LH	Product LI
Product LJ	Product LK	Product LL	Product LM	Product LN	Product LO	Product LP
Product LQ	Product LR	Product LS	Product LT	Product LU	Product LV	Product LW
Product LX	Product LY	Product LZ	Product MA	Product MB	Product MC	Product MD
Product ME	Product MF	Product MG	Product MH	Product MI	Product MJ	Product MK
Product ML	Product MN	Product MO	Product MP	Product MQ	Product MR	Product MS
Product MT	Product MU	Product MV	Product MW	Product MX	Product MY	Product MZ
Product NA	Product NB	Product NC	Product ND	Product NE	Product NF	Product NG
Product NH	Product NI	Product NJ	Product NK	Product NL	Product NM	Product NN
Product NO	Product NP	Product NQ	Product NR	Product NS	Product NT	Product NU
Product NV	Product NW	Product NX	Product NY	Product NZ	Product OA	Product OB
Product OC	Product OD	Product OE	Product OF	Product OG	Product OH	Product OI
Product OJ	Product OK	Product OL	Product OM	Product ON	Product OO	Product OP
Product OQ	Product OR	Product OS	Product OT	Product OU	Product OV	Product OW
Product OX	Product OY	Product OZ	Product PA	Product PB	Product PC	Product PD
Product PE	Product PF	Product PG	Product PH	Product PI	Product PJ	Product PK
Product PL	Product PM	Product PN	Product PO	Product PP	Product PQ	Product PR
Product PS	Product PT	Product PU	Product PV	Product PW	Product PX	Product PY
Product PZ	Product QA	Product QB	Product QC	Product QD	Product QE	Product QF
Product QG	Product QH	Product QI	Product QJ	Product QK	Product QL	Product QM
Product QN	Product QO	Product QP	Product QR	Product QS	Product QT	Product QU
Product QV	Product QW	Product QX	Product QY	Product QZ	Product RA	Product RB
Product RC	Product RD	Product RE	Product RF	Product RG	Product RH	Product RI
Product RJ	Product RK	Product RL	Product RM	Product RN	Product RO	Product RP
Product RQ	Product RR	Product RS	Product RT	Product RU	Product RV	Product RW
Product RX	Product RY	Product RZ	Product SA	Product SB	Product SC	Product SD
Product SE	Product SF	Product SG	Product SH	Product SI	Product SJ	Product SK
Product SL	Product SM	Product SN	Product SO	Product SP	Product SQ	Product SR
Product ST	Product SU	Product SV	Product SW	Product SX	Product SY	Product SZ
Product TA	Product TB	Product TC	Product TD	Product TE	Product TF	Product TG
Product TH	Product TI	Product TJ	Product TK	Product TL	Product TM	Product TN
Product TO	Product TP	Product TQ	Product TR	Product TS	Product TT	Product TU
Product TV	Product TV	Product TV	Product TV	Product TV	Product TV	Product TV
Product TV	Product TV	Product TV	Product TV	Product TV	Product TV	Product TV
Product TV	Product TV	Product TV	Product TV	Product TV	Product TV	Product TV
Product TV	Product TV	Product TV	Product TV	Product TV	Product TV	Product TV
Product TV	Product TV	Product TV	Product TV	Product TV	Product TV	Product TV
Product TV	Product TV	Product TV	Product TV	Product TV	Product TV	Product TV
Product TV	Product TV	Product TV	Product TV	Product TV	Product TV	Product TV
Product TV	Product TV	Product TV	Product TV	Product TV	Product TV	Product TV
Product TV	Product TV	Product TV	Product TV	Product TV	Product TV	Product TV
Product TV	Product TV	Product TV	Product TV	Product TV	Product TV	Product TV
Product TV	Product TV	Product TV	Product TV	Product TV	Product TV	Product TV
Product TV	Product TV	Product TV	Product TV	Product TV	Product TV	Product TV
Product TV	Product TV	Product TV	Product TV	Product TV	Product TV	Product TV
Product TV	Product TV	Product TV	Product TV	Product TV	Product TV	Product TV
Product TV	Product TV	Product TV	Product TV	Product TV	Product TV	Product TV
Product TV	Product TV	Product TV	Product TV	Product TV	Product TV	Product TV
Product TV	Product TV	Product TV	Product TV	Product TV	Product TV	Product TV
Product TV	Product TV	Product TV	Product TV	Product TV	Product TV	Product TV
Product TV	Product TV	Product TV	Product TV	Product TV	Product TV	Product TV
Product TV	Product TV	Product TV	Product TV	Product TV	Product TV	Product TV
Product TV	Product TV	Product TV	Product TV	Product TV	Product TV	Product TV
Product TV	Product TV	Product TV	Product TV	Product TV	Product TV	Product TV
Product TV	Product TV	Product TV	Product TV	Product TV	Product TV	Product TV
Product TV	Product TV	Product TV	Product TV	Product TV	Product TV	Product TV
Product TV	Product TV	Product TV	Product TV	Product TV	Product TV	Product TV
Product TV	Product TV	Product TV	Product TV	Product TV	Product TV	Product TV
Product TV	Product TV	Product TV	Product TV	Product TV	Product TV	Product TV
Product TV	Product TV	Product TV	Product TV	Product TV	Product TV	Product TV
Product TV	Product TV	Product TV	Product TV	Product TV	Product TV	Product TV
Product TV	Product TV	Product TV	Product TV	Product TV	Product TV	Product TV
Product TV	Product TV	Product TV	Product TV	Product TV	Product TV	Product TV
Product TV	Product TV	Product TV	Product TV	Product TV	Product TV	Product TV
Product TV	Product TV	Product TV	Product TV	Product TV	Product TV	Product TV
Product TV	Product TV	Product TV	Product TV	Product TV	Product TV	Product TV
Product TV	Product TV	Product TV	Product TV	Product TV	Product TV	Product TV
Product TV	Product TV	Product TV	Product TV	Product TV	Product TV	Product TV
Product TV	Product TV	Product TV	Product TV	Product TV	Product TV	Product TV
Product TV	Product TV	Product TV	Product TV	Product TV	Product TV	Product TV
Product TV	Product TV	Product TV	Product TV	Product TV	Product TV	Product TV
Product TV	Product TV	Product TV	Product TV	Product TV	Product TV	Product TV
Product TV	Product TV	Product TV	Product TV	Product TV	Product TV	Product TV
Product TV	Product TV	Product TV	Product TV	Product TV	Product TV	Product TV
Product TV	Product TV	Product TV	Product TV	Product TV	Product TV	Product TV
Product TV	Product TV	Product TV	Product TV	Product TV	Product TV	Product TV
Product TV	Product TV	Product TV	Product TV	Product TV	Product TV	Product TV
Product TV	Product TV	Product TV	Product TV	Product TV	Product TV	Product TV
Product TV	Product TV	Product TV	Product TV	Product TV	Product TV	Product TV
Product TV	Product TV	Product TV	Product TV	Product TV	Product TV	Product TV
Product TV	Product TV	Product TV	Product TV	Product TV	Product TV	Product TV
Product TV	Product TV	Product TV	Product TV	Product TV	Product TV	Product TV
Product TV	Product TV	Product TV	Product TV	Product TV	Product TV	Product TV
Product TV	Product TV	Product TV	Product TV	Product TV	Product TV	Product TV
Product TV	Product TV	Product TV	Product TV	Product TV	Product TV	Product TV
Product TV	Product TV	Product TV	Product TV	Product TV	Product TV	Product TV
Product TV	Product TV	Product TV	Product TV	Product TV	Product TV	Product TV
Product TV	Product TV	Product TV	Product TV	Product TV	Product TV	Product TV
Product TV	Product TV	Product TV				



NIPSCO Residential Energy Efficiency Rebate Program Qualified Product List				NIPSCO ENERGY SERVICES	
Air Cleaners					
ENERGY STAR #	Brand Name	Model Number	Additive to Model Identifier	Rated First Stage Clean Air Delivery Rate (cfm)	Rated Second Stage Clean Air Delivery Rate (cfm)
1363263	Thermostat	5710		39	31
238548	LEVOT	LEV-CR1-618S	LAPC-CR1-618S; LAPC-CR1-618S models are identical and each other except the model number and color. Levot's "Power" features A-2, A-3, A-4, A-5, A-6, A-7, A-8, A-9, A-10, A-11, A-12, A-13, A-14, A-15, A-16, A-17, A-18, A-19, A-20, A-21, A-22, A-23, A-24, A-25, A-26, A-27, A-28, A-29, A-30, A-31, A-32, A-33, A-34, A-35, A-36, A-37, A-38, A-39, A-40, A-41, A-42, A-43, A-44, A-45, A-46, A-47, A-48, A-49, A-50, A-51, A-52, A-53, A-54, A-55, A-56, A-57, A-58, A-59, A-60, A-61, A-62, A-63, A-64, A-65, A-66, A-67, A-68, A-69, A-70, A-71, A-72, A-73, A-74, A-75, A-76, A-77, A-78, A-79, A-80, A-81, A-82, A-83, A-84, A-85, A-86, A-87, A-88, A-89, A-90, A-91, A-92, A-93, A-94, A-95, A-96, A-97, A-98, A-99, A-100, A-101, A-102, A-103, A-104, A-105, A-106, A-107, A-108, A-109, A-110, A-111, A-112, A-113, A-114, A-115, A-116, A-117, A-118, A-119, A-120, A-121, A-122, A-123, A-124, A-125, A-126, A-127, A-128, A-129, A-130, A-131, A-132, A-133, A-134, A-135, A-136, A-137, A-138, A-139, A-140, A-141, A-142, A-143, A-144, A-145, A-146, A-147, A-148, A-149, A-150, A-151, A-152, A-153, A-154, A-155, A-156, A-157, A-158, A-159, A-160, A-161, A-162, A-163, A-164, A-165, A-166, A-167, A-168, A-169, A-170, A-171, A-172, A-173, A-174, A-175, A-176, A-177, A-178, A-179, A-180, A-181, A-182, A-183, A-184, A-185, A-186, A-187, A-188, A-189, A-190, A-191, A-192, A-193, A-194, A-195, A-196, A-197, A-198, A-199, A-200, A-201, A-202, A-203, A-204, A-205, A-206, A-207, A-208, A-209, A-210, A-211, A-212, A-213, A-214, A-215, A-216, A-217, A-218, A-219, A-220, A-221, A-222, A-223, A-224, A-225, A-226, A-227, A-228, A-229, A-230, A-231, A-232, A-233, A-234, A-235, A-236, A-237, A-238, A-239, A-240, A-241, A-242, A-243, A-244, A-245, A-246, A-247, A-248, A-249, A-250, A-251, A-252, A-253, A-254, A-255, A-256, A-257, A-258, A-259, A-260, A-261, A-262, A-263, A-264, A-265, A-266, A-267, A-268, A-269, A-270, A-271, A-272, A-273, A-274, A-275, A-276, A-277, A-278, A-279, A-280, A-281, A-282, A-283, A-284, A-285, A-286, A-287, A-288, A-289, A-290, A-291, A-292, A-293, A-294, A-295, A-296, A-297, A-298, A-299, A-300, A-301, A-302, A-303, A-304, A-305, A-306, A-307, A-308, A-309, A-310, A-311, A-312, A-313, A-314, A-315, A-316, A-317, A-318, A-319, A-320, A-321, A-322, A-323, A-324, A-325, A-326, A-327, A-328, A-329, A-330, A-331, A-332, A-333, A-334, A-335, A-336, A-337, A-338, A-339, A-340, A-341, A-342, A-343, A-344, A-345, A-346, A-347, A-348, A-349, A-350, A-351, A-352, A-353, A-354, A-355, A-356, A-357, A-358, A-359, A-360, A-361, A-362, A-363, A-364, A-365, A-366, A-367, A-368, A-369, A-370, A-371, A-372, A-373, A-374, A-375, A-376, A-377, A-378, A-379, A-380, A-381, A-382, A-383, A-384, A-385, A-386, A-387, A-388, A-389, A-390, A-391, A-392, A-393, A-394, A-395, A-396, A-397, A-398, A-399, A-400, A-401, A-402, A-403, A-404, A-405, A-406, A-407, A-408, A-409, A-410, A-411, A-412, A-413, A-414, A-415, A-416, A-417, A-418, A-419, A-420, A-421, A-422, A-423, A-424, A-425, A-426, A-427, A-428, A-429, A-430, A-431, A-432, A-433, A-434, A-435, A-436, A-437, A-438, A-439, A-440, A-441, A-442, A-443, A-444, A-445, A-446, A-447, A-448, A-449, A-450, A-451, A-452, A-453, A-454, A-455, A-456, A-457, A-458, A-459, A-460, A-461, A-462, A-463, A-464, A-465, A-466, A-467, A-468, A-469, A-470, A-471, A-472, A-473, A-474, A-475, A-476, A-477, A-478, A-479, A-480, A-481, A-482, A-483, A-484, A-485, A-486, A-487, A-488, A-489, A-490, A-491, A-492, A-493, A-494, A-495, A-496, A-497, A-498, A-499, A-500, A-501, A-502, A-503, A-504, A-505, A-506, A-507, A-508, A-509, A-510, A-511, A-512, A-513, A-514, A-515, A-516, A-517, A-518, A-519, A-520, A-521, A-522, A-523, A-524, A-525, A-526, A-527, A-528, A-529, A-530, A-531, A-532, A-533, A-534, A-535, A-536, A-537, A-538, A-539, A-540, A-541, A-542, A-543, A-544, A-545, A-546, A-547, A-548, A-549, A-550, A-551, A-552, A-553, A-554, A-555, A-556, A-557, A-558, A-559, A-560, A-561, A-562, A-563, A-564, A-565, A-566, A-567, A-568, A-569, A-570, A-571, A-572, A-573, A-574, A-575, A-576, A-577, A-578, A-579, A-580, A-581, A-582, A-583, A-584, A-585, A-586, A-587, A-588, A-589, A-590, A-591, A-592, A-593, A-594, A-595, A-596, A-597, A-598, A-599, A-600, A-601, A-602, A-603, A-604, A-605, A-606, A-607, A-608, A-609, A-610, A-611, A-612, A-613, A-614, A-615, A-616, A-617, A-618, A-619, A-620, A-621, A-622, A-623, A-624, A-625, A-626, A-627, A-628, A-629, A-630, A-631, A-632, A-633, A-634, A-635, A-636, A-637, A-638, A-639, A-640, A-641, A-642, A-643, A-644, A-645, A-646, A-647, A-648, A-649, A-650, A-651, A-652, A-653, A-654, A-655, A-656, A-657, A-658, A-659, A-660, A-661, A-662, A-663, A-664, A-665, A-666, A-667, A-668, A-669, A-670, A-671, A-672, A-673, A-674, A-675, A-676, A-677, A-678, A-679, A-680, A-681, A-682, A-683, A-684, A-685, A-686, A-687, A-688, A-689, A-690, A-691, A-692, A-693, A-694, A-695, A-696, A-697, A-698, A-699, A-700, A-701, A-702, A-703, A-704, A-705, A-706, A-707, A-708, A-709, A-710, A-711, A-712, A-713, A-714, A-715, A-716, A-717, A-718, A-719, A-720, A-721, A-722, A-723, A-724, A-725, A-726, A-727, A-728, A-729, A-730, A-731, A-732, A-733, A-734, A-735, A-736, A-737, A-738, A-739, A-740, A-741, A-742, A-743, A-744, A-745, A-746, A-747, A-748, A-749, A-750, A-751, A-752, A-753, A-754, A-755, A-756, A-757, A-758, A-759, A-760, A-761, A-762, A-763, A-764, A-765, A-766, A-767, A-768, A-769, A-770, A-771, A-772, A-773, A-774, A-775, A-776, A-777, A-778, A-779, A-780, A-781, A-782, A-783, A-784, A-785, A-786, A-787, A-788, A-789, A-790, A-791, A-792, A-793, A-794, A-795, A-796, A-797, A-798, A-799, A-800, A-801, A-802, A-803, A-804, A-805, A-806, A-807, A-808, A-809, A-810, A-811, A-812, A-813, A-814, A-815, A-816, A-817, A-818, A-819, A-820, A-821, A-822, A-823, A-824, A-825, A-826, A-827, A-828, A-829, A-830, A-831, A-832, A-833, A-834, A-835, A-836, A-837, A-838, A-839, A-840, A-841, A-842, A-843, A-844, A-845, A-846, A-847, A-848, A-849, A-850, A-851, A-852, A-853, A-854, A-855, A-856, A-857, A-858, A-859, A-860, A-861, A-862, A-863, A-864, A-865, A-866, A-867, A-868, A-869, A-870, A-871, A-872, A-873, A-874, A-875, A-876, A-877, A-878, A-879, A-880, A-881, A-882, A-883, A-884, A-885, A-886, A-887, A-888, A-889, A-890, A-891, A-892, A-893, A-894, A-895, A-896, A-897, A-898, A-899, A-900, A-901, A-902, A-903, A-904, A-905, A-906, A-907, A-908, A-909, A-910, A-911, A-912, A-913, A-914, A-915, A-916, A-917, A-918, A-919, A-920, A-921, A-922, A-923, A-924, A-925, A-926, A-927, A-928, A-929, A-930, A-931, A-932, A-933, A-934, A-935, A-936, A-937, A-938, A-939, A-940, A-941, A-942, A-943, A-944, A-945, A-946, A-947, A-948, A-949, A-950, A-951, A-952, A-953, A-954, A-955, A-956, A-957, A-958, A-959, A-960, A-961, A-962, A-963, A-964, A-965, A-966, A-967, A-968, A-969, A-970, A-971, A-972, A-973, A-974, A-975, A-976, A-977, A-978, A-979, A-980, A-981, A-982, A-983, A-984, A-985, A-986, A-987, A-988, A-989, A-990, A-991, A-992, A-993, A-994, A-995, A-996, A-997, A-998, A-999, A-1000, A-1001, A-1002, A-1003, A-1004, A-1005, A-1006, A-1007, A-1008, A-1009, A-1010, A-1011, A-1012, A-1013, A-1014, A-1015, A-1016, A-1017, A-1018, A-1019, A-1020, A-1021, A-1022, A-1023, A-1024, A-1025, A-1026, A-1027, A-1028, A-1029, A-1030, A-1031, A-1032, A-1033, A-1034, A-1035, A-1036, A-1037, A-1038, A-1039, A-1040, A-1041, A-1042, A-1043, A-1044, A-1045, A-1046, A-1047, A-1048, A-1049, A-1050, A-1051, A-1052, A-1053, A-1054, A-1055, A-1056, A-1057, A-1058, A-1059, A-1060, A-1061, A-1062, A-1063, A-1064, A-1065, A-1066, A-1067, A-1068, A-1069, A-1070, A-1071, A-1072, A-1073, A-1074, A-1075, A-1076, A-1077, A-1078, A-1079, A-1080, A-1081, A-1082, A-1083, A-1084, A-1085, A-1086, A-1087, A-1088, A-1089, A-1090, A-1091, A-1092, A-1093, A-1094, A-1095, A-1096, A-1097, A-1098, A-1099, A-1100, A-1101, A-1102, A-1103, A-1104, A-1105, A-1106, A-1107, A-1108, A-1109, A-1110, A-1111, A-1112, A-1113, A-1114, A-1115, A-1116, A-1117, A-1118, A-1119, A-1120, A-1121, A-1122, A-1123, A-1124, A-1125, A-1126, A-1127, A-1128, A-1129, A-1130, A-1131, A-1132, A-1133, A-1134, A-1135, A-1136, A-1137, A-1138, A-1139, A-1140, A-1141, A-1142, A-1143, A-1144, A-1145, A-1146, A-1147, A-1148, A-1149, A-1150, A-1151, A-1152, A-1153, A-1154, A-1155, A-1156, A-1157, A-1158, A-1159, A-1160, A-1161, A-1162, A-1163, A-1164, A-1165, A-1166, A-1167, A-1168, A-1169, A-1170, A-1171, A-1172, A-1173, A-1174, A-1175, A-1176, A-1177, A-1178, A-1179, A-1180, A-1181, A-1182, A-1183, A-1184, A-1185, A-1186, A-1187, A-1188, A-1189, A-1190, A-1191, A-1192, A-1193, A-1194, A-1195, A-1196, A-1197, A-1198, A-1199, A-1200, A-1201, A-1202, A-1203, A-1204, A-1205, A-1206, A-1207, A-1208, A-1209, A-1210, A-1211, A-1212, A-1213, A-1214, A-1215, A-1216, A-1217, A-1218, A-1219, A-1220, A-1221, A-1222, A-1223, A-1224, A-1225, A-1226, A-1227, A-1228, A-1229, A-1230, A-1231, A-1232, A-1233, A-1234, A-1235, A-1236, A-1237, A-1238, A-1239, A-1240, A-1241, A-1242, A-1243, A-1244, A-1245, A-1246, A-1247, A-1248, A-1249, A-1250, A-1251, A-1252, A-1253, A-1254, A-1255, A-1256, A-1257, A-1258, A-1259, A-1260, A-1261, A-1262, A-1263, A-1264, A-1265, A-1266, A-1267, A-1268, A-1269, A-1270, A-1271, A-1272, A-1273, A-1274, A-1275, A-1276, A-1277, A-1278, A-1279, A-1280, A-1281, A-1282, A-1283, A-1284, A-1285, A-1286, A-1287, A-1288, A-1289, A-1290, A-1291, A-1292, A-1293, A-1294, A-1295, A-1296, A-1297, A-1298, A-1299, A-1300, A-1301, A-1302, A-1303, A-1304, A-1305, A-1306, A-1307, A-1308, A-1309, A-1310, A-1311, A-1312, A-1313, A-1314, A-1315, A-1316, A-1317, A-1318, A-1319, A-1320, A-1321, A-1322, A-1323, A-1324, A-1325, A-1326, A-1327, A-1328, A-1329, A-1330, A-1331, A-1332, A-1333, A-1334, A-1335, A-1336, A-1337, A-1338, A-1339, A-1340, A-1341, A-1342, A-1343, A-1344, A-1345, A-1346, A-1347, A-1348, A-1349, A-1350, A-1351, A-1352, A-1353, A-1354, A-1355, A-1356, A-1357, A-1358, A-1359, A-1360, A-1361, A-1362, A-1363, A-1364, A-1365, A-1366, A-1367, A-1368, A-1369, A-1370, A-1371, A-1372, A-1373, A-1374, A-1375, A-1376, A-1377, A-1378, A-1379, A-1380, A-1381, A-1382, A-1383, A-1384, A-1385, A-1386, A-1387, A-1388, A-1389, A-1390, A-1391, A-1392, A-1393, A-1394, A-1395, A-1396, A-1397, A-1398, A-1399, A-1400, A-1401, A-1402, A-1403, A-1404, A-1405, A-1406, A-1407, A-1408, A-1409, A-1410, A-1411, A-1412, A-1413, A-1414, A-1415, A-1416, A-1417, A-1418, A-1419, A-1420, A-1421, A-1422, A-1423, A-1424, A-1425, A-1426, A-1427, A-1428, A-1429, A-1430, A-1431, A-1432, A-1433, A-1434, A-1435, A-1436, A-1437, A-1438, A-1439, A-1440, A-1441, A-1442, A-1443, A-1444, A-1445, A-1446, A-1447, A-1448, A-1449, A-1450, A-1451, A-1452, A-1453, A-1454, A-1455, A-1456, A-1457, A-1458, A-1459, A-1460, A-1461, A-1462, A-1463, A-1464, A-1465, A-1466, A-1467, A-1468, A-1469, A-1470, A-1471, A-1472, A-1473, A-1474, A-1475, A-1476, A-1477, A-1478, A-1479, A-1480, A-1481, A-1482, A-1483, A-1484, A-1485, A-1486, A-1487, A-1488, A-1489, A-1490, A-1491, A-1492, A-1493, A-1494, A-1495, A-1496, A-1497, A-1498, A-1499, A-1500, A-1501, A-1502, A-1503, A-1504, A-1505, A-1506, A-1507, A-1508, A-1509, A-1510, A-1511, A-1512, A-1513, A-1514, A-1515, A-1516, A-1517, A-1518, A-1519, A-1520, A-1521, A-1522, A-1523, A-1524, A-1525, A-1526, A-1527, A-1528, A-1529, A-1530, A-1531, A-1532, A-1533, A-1534, A-1535, A-1536, A-1537, A-1538, A-1539, A-1540, A-1541, A-1542, A-1543, A-1544, A-1545, A-1546, A-1547, A-1548, A-1549, A-1550, A-1551, A-1552, A-1553, A-1554, A-1555, A-1556, A-1557, A-1558, A-1559, A-1560, A-1561, A-1562, A-1563, A-1564, A-1565, A-1566, A-1567, A-1568, A-1569, A-1570, A-1571, A-1572, A-1573, A-1574, A-1575, A-1576, A-1577, A-1578, A-1579, A-1580, A-1581, A-1582, A-1583, A-1584, A-1585, A-1586, A-1587, A-1588, A-1589, A-1590, A-1591, A-1592, A-1593, A-1594, A-1595, A-1596, A-1597, A-1598, A-1599, A-1600, A-1601, A-1602, A-1603, A-1604, A-1605, A-1606, A-1607, A-1608, A-1609, A-1610, A-1611, A-1612, A-1613, A-1614, A-1615, A-1616, A-1617, A-1618, A-1619, A-1620, A-1621, A-1622, A-1623, A-1624, A-1625, A-1626, A-1627, A-1628, A-1629, A-1630, A-1631, A-1632, A-1633, A-1634, A-1635, A-1636, A-1637, A-1638, A-1639, A-1640, A-1641, A-1642, A-1643, A-1644, A-1645, A-1646, A-1647, A-1648, A-1649, A-1650, A-1651, A-1652, A-1653, A-1654, A-1655, A-1656, A-1657, A-1658, A-1659, A-1660, A-1661, A-1662, A-1663, A-1664, A-1665, A-1666, A-1667, A-1668, A-1669, A-1670, A-1671, A-1672, A-1673, A-1674, A-1675, A-1676, A-1677, A-1678, A-1679, A-1680, A-1681, A-1682, A-1683, A-1684, A-1685, A-1686, A-1687, A-1688, A-1689, A-1690, A-1691, A-1692, A-1693, A-1694, A-1695, A-1696, A-1697, A-1698, A-1699, A-1700, A-1701, A-1702, A-1703, A-1704, A-1705, A-1706, A-1707, A-1708, A-1709, A-1710, A-1711, A-1712, A-1713, A-1714, A-1715, A-1716, A-1717, A-1718, A-1719, A-1720, A-1721, A-1722, A-1723, A-1724, A-1725, A-1726, A-1727, A-1728, A-1729, A-1730, A-1731, A-1732, A-1733, A-1734, A-1735, A-1736, A-1737, A-1738, A-1739, A-1740, A-1741, A-1742, A-1743, A-1744, A-1745, A-1746, A-1747, A-1748, A-1749, A-1750, A-1751, A-1752, A-1753, A-1754, A-1755, A-1756, A-1757, A-1758, A-1759, A-1760, A-1761, A-1762, A-1763, A-1764, A-1765, A-1766, A-1767, A-1768, A-1769, A-1770, A-1771, A-1772, A-1773, A-1774, A-1775, A-1776, A-1777, A-1778, A-1779, A-1780, A-1781, A-1782, A-1783, A-1784, A-1785, A-1786, A-1787, A-1788, A-1789, A-1790, A-1791, A-1792, A-1793, A-1794, A-1795, A-1796, A-1797, A-1798, A-1799, A-1800, A-1801, A-1802, A-1803, A-1804, A-1805, A-1806, A-1807, A-1808, A-1809, A-1810, A-1811, A-1812, A-1813, A-1814, A-1815, A-1816, A-1817, A-1818, A-1819, A-1820, A-1821, A-1822, A-1823, A-1824, A-1825, A-1826, A-1827, A-1828, A-1829, A-1830, A-1831, A-1832, A-1833, A-1834, A-1835, A-1836, A-1837, A-1838, A-1839, A-1840, A-1841, A-1842, A-1843, A-1844, A-1845, A-1846, A-1847, A-1848, A-1849, A-1850, A-1851, A-1852, A-1853, A-1854, A-1855, A-1856, A-1857, A-1858, A-1859, A-1860, A-1861, A-1862, A-1863, A-1864, A-1865, A-1866, A-1867, A-1868, A-1869, A-1870, A-1871, A-1872, A-1873, A-1874, A-1875, A-1876, A-1877, A-1878, A-1879, A-1880, A-1881, A-1882, A-1883, A-1884, A-1885, A-1886, A-1887, A-1888		

ENERGY STAR Certified Residential Air Purifiers List

A comprehensive list of ENERGY STAR certified residential air purifiers, including brand, model, room size, and air delivery rate, as published by ENERGY STAR.

[\[pdf\]](#) User Manual Owner's Manual Warranty

biogs2 web english 1659963 secure img1 fg wfcdn docresources 0 165 |||

Ultra Quiet Air Purifier Hello Owner s manual Models: **SPA-550A** SPA-625A 24/7
customer care Copyright Rabbit Air 2017. All rights reserved For Questions: Call
888.866.8862 Visit us at www.rabbitair.com BIOGS2UM1710 Hello there Meet your
brand new BioGS We hope that this stylish bundle of ...
lang:en score:13 filesize: 3.82 M page_count: 13 document date: 2018-12-18

[\[pdf\]](#)

Air Cleaners 20211229 NIPSCO Residential Energy Efficiency Rebate Program Qualified Product List
Cory Dambach Dust Free Smoke Pollen nipsco ENERGY STAR Unique ID Brand Name Model Number
Additional Information Clean Delivery Rate cfm air cleaners docs librariesprovider11 energy efficiency
available rebates sfvrns 2 |||
ENERGY STAR Unique ID 2383703 2385148 2385147 2370951 2383677 2351754
2376211 2371985 2370955 237095 ... re the US and Canadian Large Tower base
models. HPA180B HPA180BC Roger Little MA-WM35-WIFI TPP630 **SPA-550A**
,HPA180BC,HPA180B C is a Canadian Small Tower stepup models. 118 118 118 91
133 133 140 1...