

## OMOTON 3798024

# OMOTON Bluetooth Keyboard User Manual

Model: 3798024

## INTRODUCTION

Thank you for choosing the OMOTON Bluetooth Keyboard. This ultra-slim, cable-free keyboard is designed to provide a convenient and efficient typing experience across various Bluetooth-enabled devices. With its optimized layout and long battery life, it is an ideal companion for your iPad, tablet, or mobile phone.



Image: Top-down view of the OMOTON Bluetooth Keyboard, showcasing its compact design.

## PACKAGE CONTENTS

- OMOTON KB066 Bluetooth Keyboard

Please ensure all items are present before proceeding with setup.

## SETUP

### 1. Battery Installation

The keyboard requires two AAA batteries (not included). Locate the battery compartment on the back of the keyboard, open it, and insert the batteries according to the polarity indicators. Close the compartment securely.

## 2. Pairing with Your Device

1. Ensure the keyboard has fresh batteries installed.
2. Slide the power switch on the keyboard to the "ON" position.
3. Double-click the "CONNECT" button on the keyboard to enter pairing mode. The Bluetooth indicator light will blink.
4. On your device (iPad, tablet, phone, etc.), go to **Settings > Bluetooth** and turn Bluetooth ON.
5. Your device will search for nearby Bluetooth devices. Select "Bluetooth Keyboard" or "OMOTON KB066" from the list of available devices.
6. You may be prompted to enter a PIN code displayed on your device's screen. Type this code on the OMOTON keyboard and press **Enter**.
7. Once successfully paired, the Bluetooth indicator on the keyboard will stop blinking, and your device will show the keyboard as "Connected".

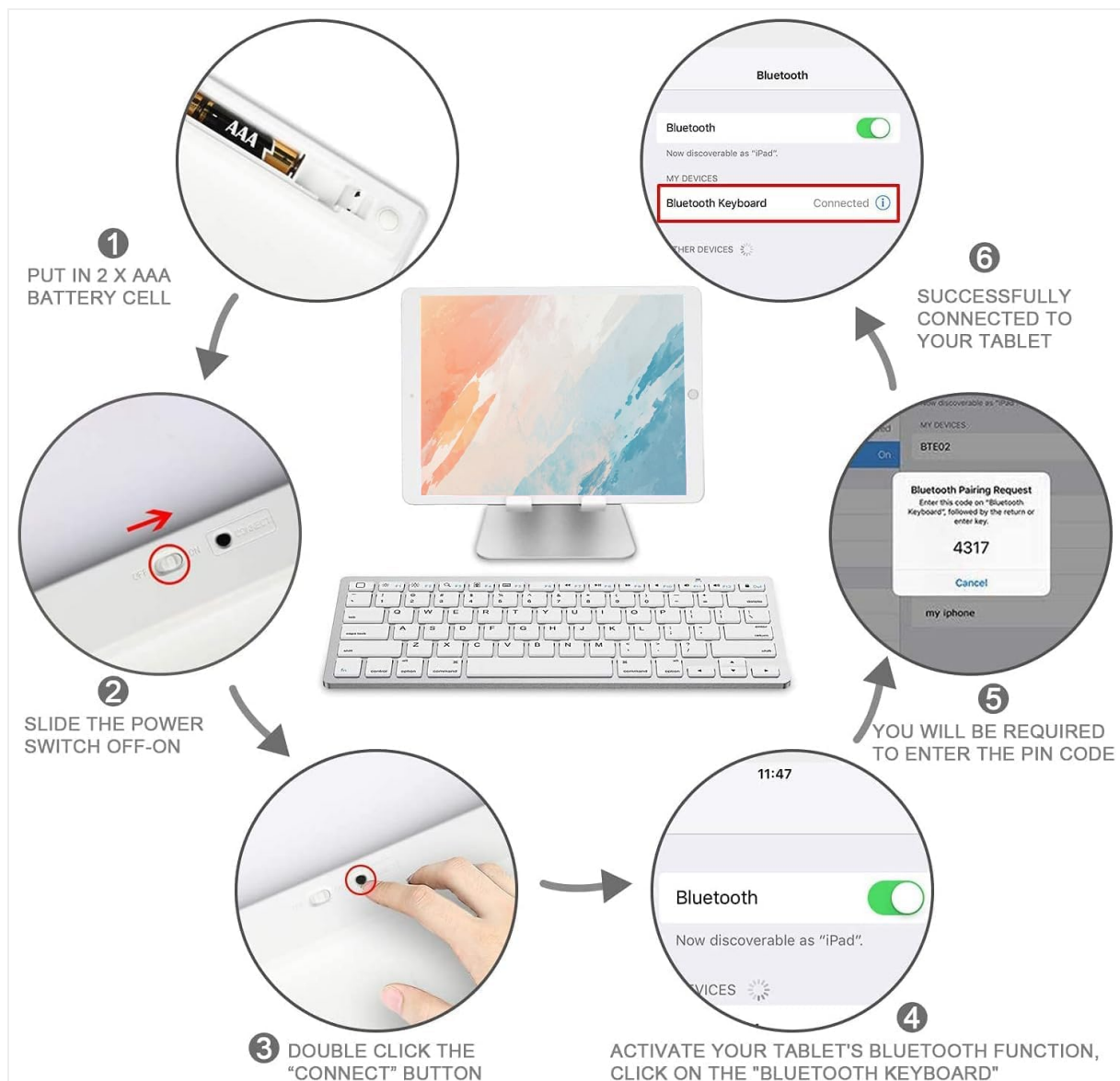


Image: Step-by-step visual guide for pairing the OMOTON Bluetooth Keyboard with a tablet device.

The keyboard operating distance is up to 10 meters (33 feet).

## OPERATING INSTRUCTIONS

### Keyboard Layout and Hotkeys

The OMOTON Bluetooth Keyboard features a QWERTY layout with 78 keys, including 13 iPad Hot keys designed

for convenience. These hotkeys allow quick access to functions such as volume control, music playback, and screen brightness.

## COMFORTABLE KEYS

Enjoy smooth and precise typing experience

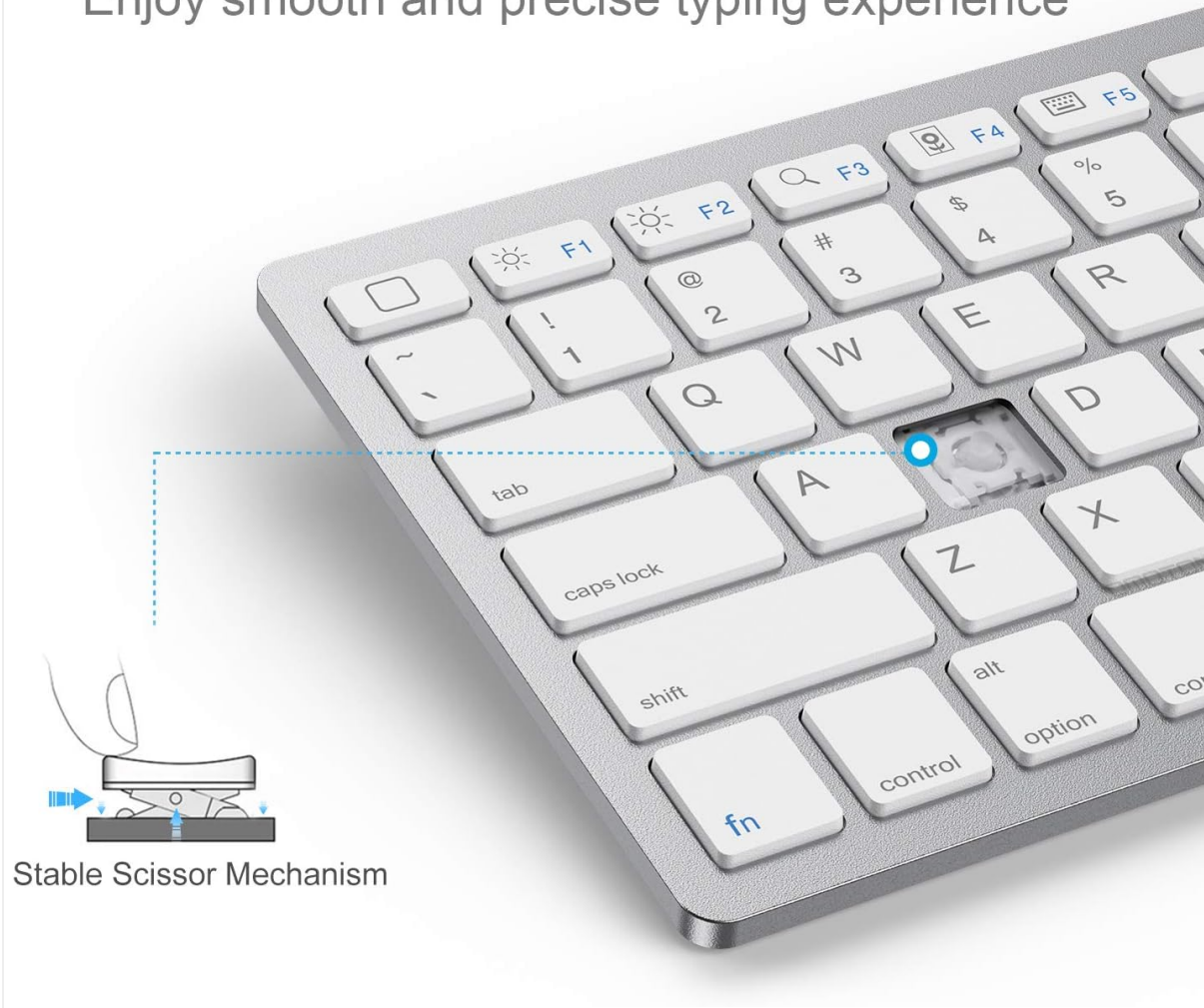


Image: Close-up view of the keyboard, highlighting the optimized multimedia keys for quick access to functions.

### Power Saving Mode

To conserve battery life, the keyboard will automatically enter power saving mode after 10 minutes of inactivity. To wake the keyboard, simply press any key and wait 2-3 seconds for it to reconnect with your device.

### Compatibility

This keyboard is super compatible with a wide range of Bluetooth-enabled devices, including iPads (10th Generation 10.9 inch, 10.2 inch (9th/8th/7th Gen), Pro 13/12.9/11 inch, Air 13/11 inch, Air 10.9 inch (5th/4th Gen), Mini (All models), Pro 10.5 inch/9.7 inch), iPhones, other Bluetooth-enabled tablets, laptops, and mobile phones.



Image: The OMOTON Bluetooth Keyboard displayed alongside an iPad, a smaller tablet, and a smartphone, illustrating its broad compatibility.

## MAINTENANCE

To ensure the longevity of your OMOTON Bluetooth Keyboard, follow these simple maintenance guidelines:

- Keep the keyboard clean by wiping it regularly with a soft, dry cloth.
- Avoid exposing the keyboard to excessive moisture, dust, or extreme temperatures.
- Do not use harsh chemicals or abrasive cleaners on the keyboard.
- Store the keyboard in a cool, dry place when not in use for extended periods.
- Replace batteries promptly when the low battery indicator appears to prevent corrosion.

## TROUBLESHOOTING

If you encounter issues with your OMOTON Bluetooth Keyboard, please refer to the following common solutions:

- **Keyboard Not Connecting or Working:**

- Press any key to wake the keyboard from sleep mode. Allow 3-4 seconds for the keyboard to reconnect.
- Ensure fresh AAA batteries are installed correctly.
- Restart your device (iPad, tablet, phone).
- On your device, "forget" or "unpair" the Bluetooth Keyboard from your Bluetooth settings, then attempt to pair it again following the setup instructions.

- **Typing Lag or Disconnections:**

- Ensure the keyboard is within the 10-meter operating range of your device.
  - Check for interference from other wireless devices.
  - Replace the batteries if they are low.
- **No Escape Key:**
    - Please note that this keyboard does not feature a dedicated Escape key.

Should you have any further product issues or questions, OMOTON customer service is available to assist you.

**SPECIFICATIONS**

<b>Brand</b>	OMOTON
<b>Model Number</b>	3798024
<b>Product Dimensions</b>	11.22 x 4.72 x 0.24 inches (285 x 120 x 6 mm)
<b>Item Weight</b>	5.6 ounces
<b>Connectivity Technology</b>	Bluetooth 3.0
<b>Number of Keys</b>	78 (including 13 iPad Hot keys)
<b>Operating Range</b>	Up to 10 meters / 33 feet
<b>Battery Type</b>	2 x AAA battery (Not Included)
<b>Estimated Battery Life</b>	Up to 6 months between battery changes (with automatic sleep mode)
<b>Color</b>	White





Image: Diagram illustrating the precise dimensions of the OMOTON Bluetooth Keyboard.

## WARRANTY AND SUPPORT

OMOTON provides friendly customer service for its products. If you have any questions, concerns, or require assistance with your OMOTON Bluetooth Keyboard, please contact OMOTON customer support through the retailer where you purchased the product or refer to the official OMOTON website for contact information. Please retain your proof of purchase for warranty claims.