

## Manuals+

[Q & A](#) | [Deep Search](#) | [Upload](#)

manuals.plus /

- › [Tier1](#) /
- › [Tier1 Pool & Spa Filter Cartridge Instruction Manual](#)

## Tier1 PAS-1012

# Tier1 Pool & Spa Filter Cartridge Instruction Manual

Model: PAS-1012

Brand: Tier1

### PRODUCT OVERVIEW

The Tier1 Pool & Spa Filter Cartridge is engineered to provide superior filtration for your pool or spa, ensuring sparkling clean water. This high-performance pleated fabric filter is a direct replacement for several popular models, including Hayward C1100, Star Clear II C1100, Filbur FC-1290, Pleatco PA100, Unicel C-8610, AK-7010, CX1100-RE, PA100-M, and SD-00103. Its durable 100 sq ft pleated fabric maximizes contact between filter media, allowing for greater capacity and efficient reduction of unwanted particles.

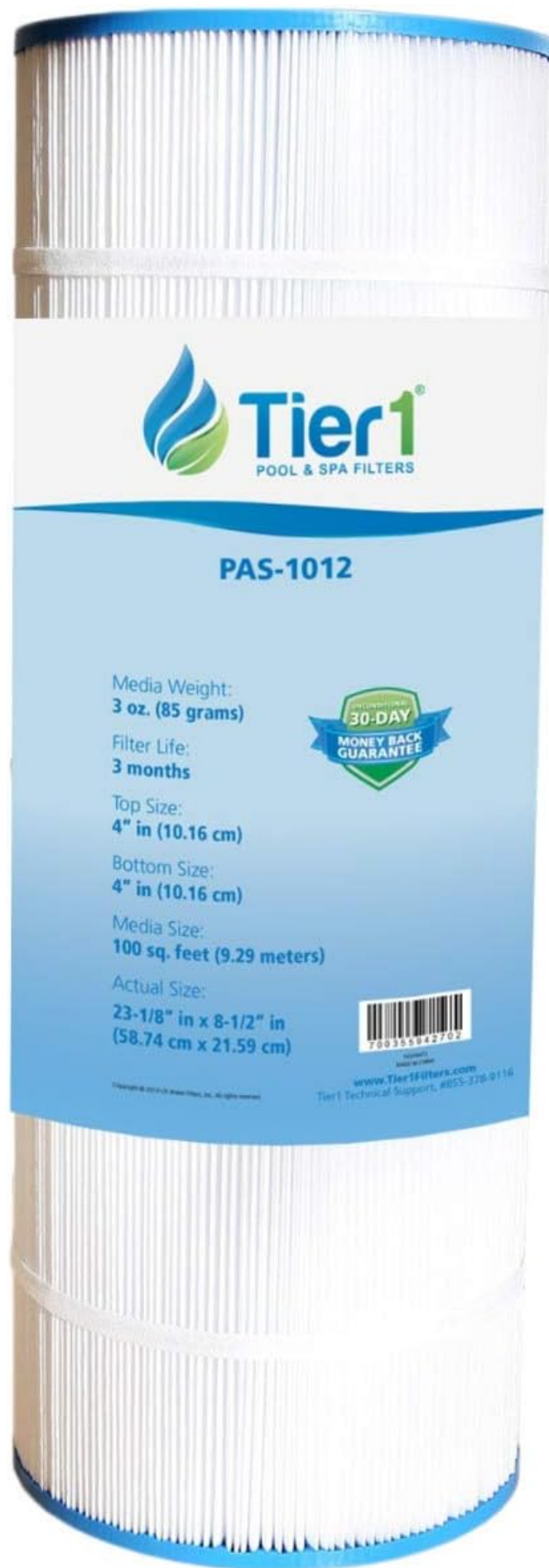


Image: The Tier1 Pool & Spa Filter Cartridge, showing its pleated design and product specifications.



Image: Illustration of the filter's application in both pool and spa environments, highlighting its versatility.

## INSTALLATION

Installing the Tier1 Pool & Spa Filter Cartridge is a straightforward process. This cartridge is designed to fit systems that utilize an 8 1/2 inch (Outside diameter) x 23 1/8 inch (Length) spa or pool filter. It is engineered to fit and perform comparably to original equipment manufacturer products.

Before installation, ensure your pump system is turned off and depressurized. Refer to your pool or spa system's specific manual for detailed instructions on how to access and remove the old filter cartridge. Once the old cartridge is removed, carefully insert the new Tier1 filter, ensuring it is seated correctly within the filter housing. Secure the housing according to your system's guidelines and then repressurize the system.

## OPERATION

The Tier1 filter cartridge operates by efficiently sifting out unwanted particles from your pool or spa water. Its pleated fabric design, featuring tight porosity and a dense weave, effectively captures sand, debris, leaves, hair, and sediment. The high strength, high flow design ensures optimal water circulation while maximizing filtration.



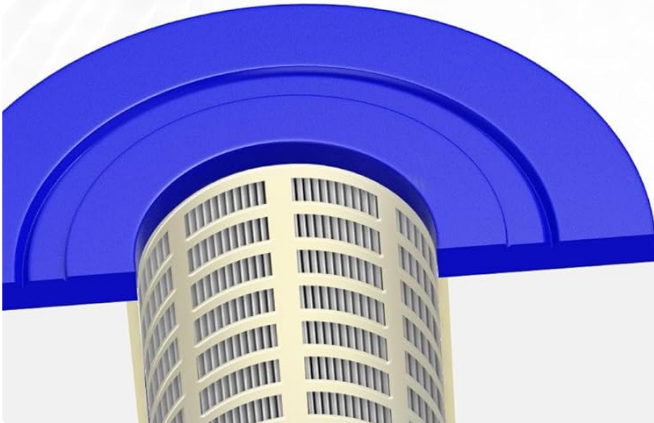
Image: Visual representation of the filter's ability to remove hair, leaves, sediment, sand, dirt, and debris, leading to sparkling clear water.

The filter's advanced design, including an injected molded core, contributes to strong, reliable construction, superior water flow, and uniform sediment distribution. This helps reduce stress on your pump, contributing to the longevity of your pool or spa system.

# REDUCE PUMP STRESS

## INJECTED MOLDED CORE

- ✓ Strong Reliable Construction
- ✓ Superior Water Flow
- ✓ Uniform Sediment Distribution



## PVC DRILLED CORE

- ✗ Weak & Unstable Construction
- ✗ Inconsistent & Inefficient Flow
- ✗ Uneven Sediment Distribution

## OTHER PRODUCTS

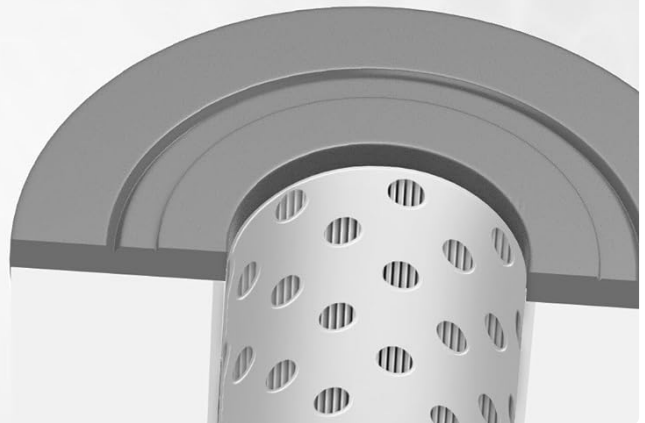


Image: Diagram illustrating the benefits of an injected molded core in reducing pump stress compared to a PVC drilled core.

# 40% MORE DEBRIS HOLDING CAPACITY

## Trilobal Advantage



Greater Surface Area



Longer Fabric Lifespan



More Time Between Cleaning



Higher Filtration Efficiency

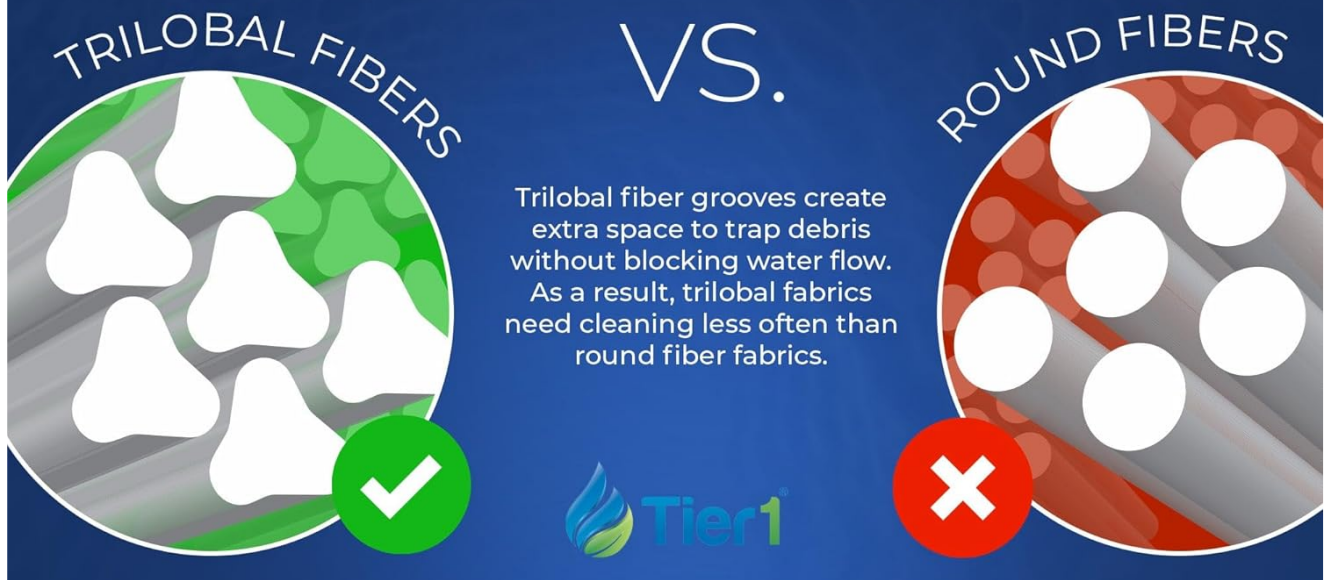


Image: Infographic detailing the 'Trilobal Advantage' of the filter media, showing how trilobal fibers offer greater surface area, longer fabric lifespan, more time between cleaning, and higher filtration efficiency compared to round fibers.

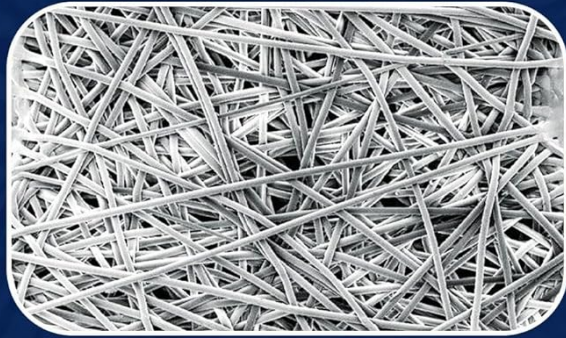
Video: An official video from Tier1 showcasing the features and benefits of Tier1 Pool & Spa Filters, including their pleated design and efficient filtration capabilities.

## MAINTENANCE

Regular maintenance is crucial for the optimal performance and longevity of your Tier1 filter cartridge. It is recommended to clean your filter when the pressure gauge on your filter tank reaches 8 psi above the pressure recorded when the filter was first installed. This indicates that the filter is accumulating debris and requires cleaning.

The filter's superior cleanability is due to its uniform fabric, which reduces clogs and is easier to clean. It utilizes 100% of the filter's surface area for maximum efficiency, and its sturdy, evenly spaced pleats hold up to multiple cleanings without wear.

# SUPERIOR CLEANABILITY



## FLAT BOND FEATURES:

- ✓ Uniform fabric reduces clogs and is easier to clean.
- ✓ Utilizes 100% of the filter's surface area for maximum efficiency.
- ✓ Sturdy, evenly spaced pleats hold up to multiple cleanings without wear.

## OTHER PRODUCTS



## POINT BOND DRAWBACKS

- ✗ Filter deadzones clog with dirt and are difficult to clean.
- ✗ Blocks 20% of the filter's surface area reducing filter efficiency.
- ✗ Limp, uneven pleats wear more quickly and make cleaning difficult.

Image: Infographic highlighting the 'Superior Cleanability' of the filter, comparing flat bond features (uniform fabric, 100% surface area utilization, durable pleats) with point bond drawbacks (clogging, reduced surface area, wear).

To clean the filter, remove it from the housing and rinse thoroughly with a garden hose, paying attention to the pleats. For deeper cleaning, specialized filter cleaning solutions can be used. Ensure the filter is completely clean before reinstalling. The lifespan of the filter is approximately 3 months, but this can vary based on usage and water conditions. Regular cleaning will help extend its effective life.

## TROUBLESHOOTING

If you experience issues with your pool or spa filtration, consider the following common troubleshooting steps:

- **Reduced Water Flow:** This often indicates a clogged filter. Perform a thorough cleaning of the filter cartridge as described in the Maintenance section.
- **Cloudy Water:** If water remains cloudy after chemical treatment, the filter may not be effectively removing particles. Check if the filter needs cleaning or replacement. Ensure proper installation and that there are no

bypasses in the system.

- **Short Filter Lifespan:** If the filter requires frequent cleaning or replacement, it might be due to heavy usage, high debris load, or improper water chemistry. Ensure regular water testing and balancing.

If problems persist after following these steps, consult a qualified pool or spa technician.

## SPECIFICATIONS

Feature	Detail
Product Dimensions	23.25 x 8.39 x 8.39 inches
Item Weight	5.15 pounds
Manufacturer	Tier1
ASIN	B00FW0SDZ2
Item Model Number	PAS-1012
Media Size	100 sq ft
Filter Type	Pleated Fabric Cartridge
Date First Available	June 25, 2015

## WARRANTY & SUPPORT

Tier1 is committed to providing high-quality products that meet rigid design, manufacturing, and filament testing standards. Our filters are built for performance and priced for value, ensuring you receive a reliable product for your water filtration needs.



### **PRODUCTS YOUR FAMILY DESERVES**

Tier1® products are designed with your family in mind.



### **A WISE INVESTMENT**

Tier1® filter cartridges are built for performance and priced for value. Tier1® believes everyone should have access to clean, great-tasting drinking water.



### **QUALITY YOU CAN COUNT ON**

Only filter cartridges that pass rigid design, manufacturing, and fitment testing get the Tier1® brand.

Image: An infographic highlighting Tier1's commitment to quality, value, and products designed with the family in mind.

For specific warranty information or technical support, please refer to the documentation included with your purchase or contact Tier1 customer service directly through their official website or the retailer from whom the product was purchased. Tier1 aims to provide affordable replacement filters and reliable filtration solutions.