

[Manuals.plus](#) /

› [Nordyne](#) /

› Nordyne OEM Replacement Electric Furnace Heating Element - Model 902818 Instruction Manual

Nordyne 902818

Nordyne OEM Replacement Electric Furnace Heating Element - Model 902818

Official Instruction Manual

INTRODUCTION

This manual provides essential information for the installation, operation, and maintenance of your Nordyne OEM Replacement Electric Furnace Heating Element, part number 902818. This high-quality OEM replacement part is designed to restore the heating functionality of compatible Nordyne, Intertherm, and Miller Electric Furnaces. It is crucial to read and understand all instructions before attempting any installation or maintenance procedures. For safety, always ensure power is disconnected before working on electrical components.

PRODUCT OVERVIEW

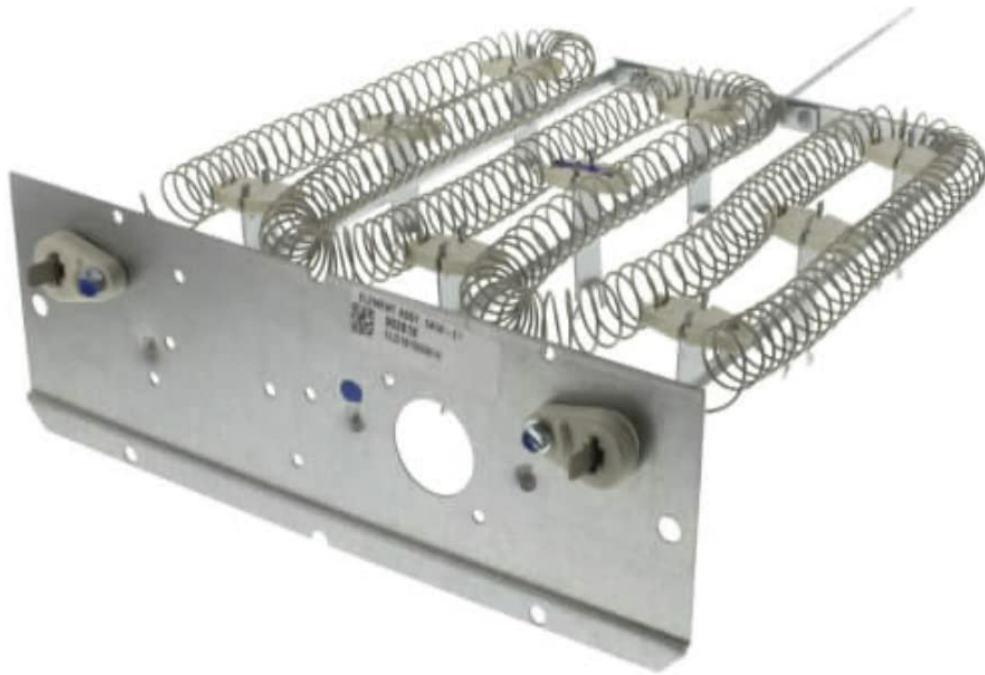


Figure 1: The Nordyne OEM Replacement Electric Furnace Heating Element (Part #902818). This image displays the metallic frame holding multiple coiled heating elements, designed for integration into electric furnaces.

The Nordyne OEM Replacement Electric Furnace Heating Element, part #902818, is a brand new, factory-original component. It is specifically engineered to provide reliable heating for various Nordyne, Intertherm, and Miller Electric Furnace models.

Key Features:

- Genuine OEM replacement part ensuring compatibility and performance.
- Designed for electric furnaces, providing efficient heat generation.
- Replaces multiple older part numbers, including 239823, 2398230, 432731, 4327310, 491217, 4912170, 631690, and 6316900.

COMPATIBILITY

This heating element is compatible with a range of Nordyne, Intertherm, and Miller Electric Furnace models. Please verify your furnace model number to ensure compatibility. Compatible models include, but are not limited to:

- E4EB-015H
- E3EB-015H
- E2EB-015HA
- E2EH-015HA
- E1EB-015HA
- E1EH-015HA
- FEHA-015HA
- FEHB-015HA
- FEBB-015HA
- FEHY-015HA

- CME-015HA-03

If your model is not listed, please contact Nordyne support or your supplier with your furnace model number for verification.

SAFETY INFORMATION

WARNING: Risk of Electric Shock and Fire.

- Always disconnect power to the furnace at the main circuit breaker before inspecting, installing, or servicing the heating element.
- Installation should only be performed by a qualified HVAC technician or licensed electrician.
- Wear appropriate personal protective equipment (PPE), including insulated gloves and safety glasses.
- Ensure all wiring connections are secure and conform to local electrical codes.
- Do not operate the furnace with damaged or improperly installed components.

SETUP AND INSTALLATION

This section provides general guidelines for the installation of the heating element. Specific steps may vary depending on your furnace model. Refer to your furnace's service manual for detailed instructions.

1. **Power Disconnection:** Locate the main electrical panel for your home and turn off the circuit breaker supplying power to the furnace. Verify power is off using a voltage tester.
2. **Access Furnace:** Open the access panel(s) of your electric furnace to expose the heating element compartment.
3. **Identify Old Element:** Carefully identify the existing heating element. Note its orientation and how it is connected.
4. **Disconnect Wiring:** Disconnect all electrical wiring from the old heating element. Take photos or make diagrams if necessary to aid reassembly.
5. **Remove Old Element:** Unfasten any screws or clips securing the old heating element and carefully remove it from the furnace.
6. **Install New Element:** Position the new Nordyne 902818 heating element in the furnace, ensuring it is correctly seated and aligned with mounting points. Secure it with the appropriate fasteners.
7. **Connect Wiring:** Reconnect all electrical wiring to the new heating element, ensuring connections are tight and correct according to your previous notes or the furnace wiring diagram.
8. **Close Furnace:** Replace all furnace access panels and secure them properly.
9. **Restore Power:** Return to the main electrical panel and turn on the circuit breaker for the furnace.

IMPORTANT: After installation, perform a functional test to ensure the heating element operates correctly and safely.

OPERATING INSTRUCTIONS

The Nordyne 902818 heating element functions as an integral part of your electric furnace's heating system. Its operation is controlled by the furnace's thermostat and control board.

- Ensure your furnace thermostat is set to "Heat" mode and the desired temperature is above the current room temperature.

- The furnace control board will energize the heating element(s) when heat is called for.
- Air will be drawn across the energized heating element, warmed, and then distributed throughout your home via the ductwork.

No direct user interaction with the heating element itself is required during normal operation.

MAINTENANCE

Regular maintenance of your furnace system is essential for optimal performance and longevity of all components, including the heating element. While the heating element itself requires minimal direct maintenance, consider the following:

- **Annual Furnace Inspection:** Have your entire furnace system inspected annually by a qualified HVAC technician. They can check the heating elements for signs of wear, corrosion, or damage.
- **Air Filter Replacement:** Regularly replace or clean your furnace's air filter as recommended by the furnace manufacturer (typically every 1-3 months). A clean filter ensures proper airflow, which prevents the heating elements from overheating.
- **Cleanliness:** Keep the area around your furnace clean and free of dust and debris. Dust accumulation inside the furnace can affect performance and potentially pose a fire hazard.

CAUTION: Do not attempt to clean the heating element directly unless you are a qualified technician and have disconnected all power.

TROUBLESHOOTING

If your furnace is not producing heat, or if you suspect an issue with the heating element, consider the following common troubleshooting steps. Always ensure power is disconnected before inspecting internal components.

Problem	Possible Cause	Solution
Furnace not heating at all.	Thermostat setting incorrect; tripped circuit breaker; faulty heating element; control board issue.	Check thermostat settings. Reset furnace circuit breaker. If element is suspected, professional diagnosis and replacement may be needed.
Insufficient heat.	Clogged air filter; partially failed heating element; ductwork issues.	Replace air filter. Inspect heating element for visible damage (e.g., broken coils). Consult an HVAC technician for ductwork inspection.
Burning smell from furnace.	Dust accumulation on heating element; electrical issue.	Turn off furnace immediately. Inspect for dust buildup (after disconnecting power). If smell persists or is electrical, call a professional.

For complex issues or if you are unsure about any step, it is highly recommended to contact a certified HVAC technician.

SPECIFICATIONS

- **Part Number:** 902818
- **Type:** OEM Replacement Electric Furnace Heating Element
- **Manufacturer:** Nordyne

- **Nominal Power:** 5kW
- **Dimensions:** Approximately 6 x 6 x 6 inches
- **Weight:** Approximately 2.5 Pounds
- **Condition:** Brand New
- **Replaces Part Numbers:** 239823, 2398230, 432731, 4327310, 491217, 4912170, 631690, 6316900

WARRANTY AND SUPPORT

As an OEM replacement part, the Nordyne 902818 heating element typically carries a manufacturer's warranty against defects in materials and workmanship. The specific terms and duration of the warranty may vary. Please retain your proof of purchase.

For warranty claims, technical support, or to verify compatibility with your specific furnace model, please contact Nordyne customer service or the authorized dealer from whom you purchased the part.

Contact Information:

- Refer to the official Nordyne website or your product packaging for the most current contact details.
- For purchase-related inquiries, contact your seller.

Returns are accepted if the part is incorrect, as per seller policy. Please refer to your purchase agreement for return procedures.

