

## TE 58516-1

# TE Connectivity 58516-1 Locator Subassembly User Manual

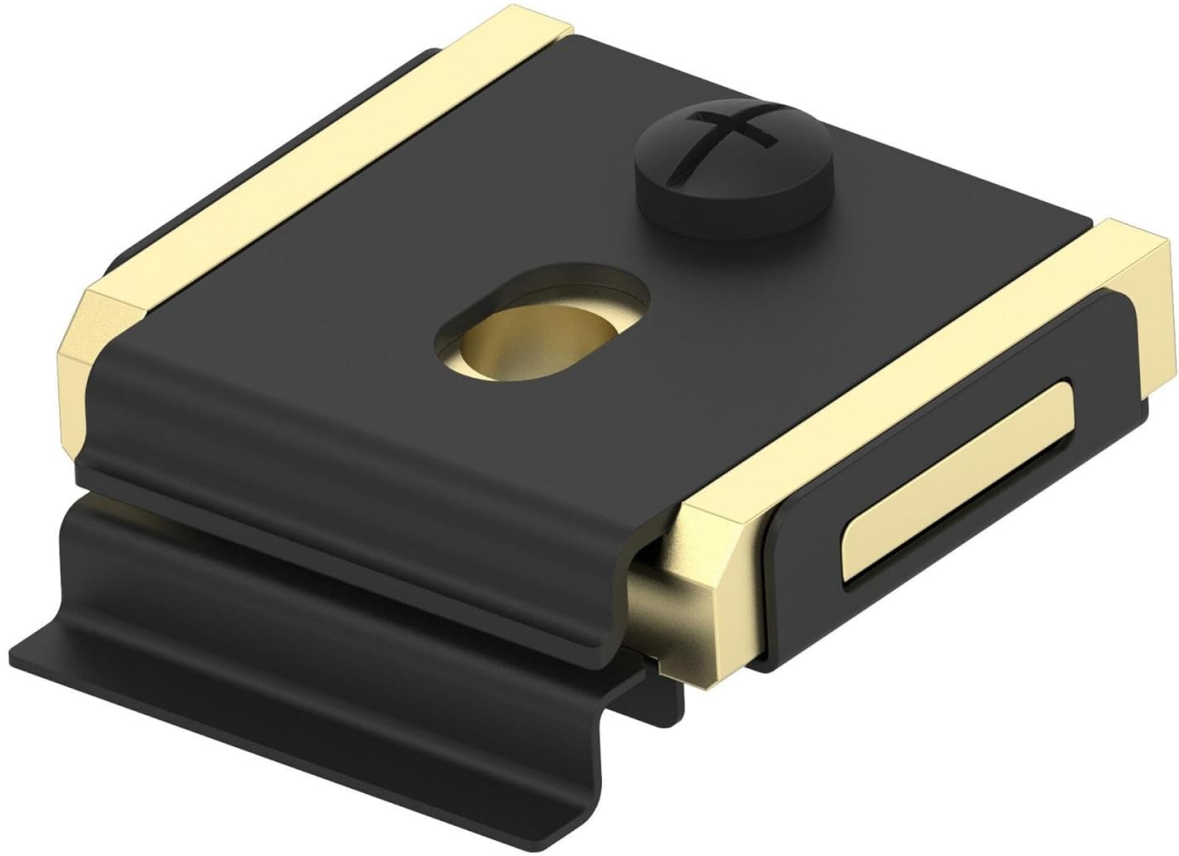
Model: 58516-1 | Brand: TE

## 1. INTRODUCTION

This manual provides essential information for the proper installation, operation, and maintenance of the TE Connectivity 58516-1 Locator Subassembly. Please read this manual thoroughly before using the product to ensure safe and efficient operation.

The 58516-1 Locator Subassembly is a specialized electronic component designed for integration into larger systems, typically within industrial or home audio applications, specifically as a connector or adapter. Its primary function is to facilitate precise positioning and connection within an assembly.

## 2. PRODUCT OVERVIEW



**Figure 2.1:** TE Connectivity 58516-1 Locator Subassembly. This image displays the TE Connectivity 58516-1 Locator Subassembly, a compact electronic component. It features a black housing with gold-colored metallic accents, indicating connection points or structural elements. A small black screw with a cross-head is visible on the top surface, alongside an oval-shaped opening, likely for mounting or further connection.

The locator subassembly is a precision-engineered part, crucial for ensuring correct alignment and secure fastening in complex electronic or mechanical setups. Its robust design ensures durability and reliable performance in demanding environments.

### 3. SETUP AND INSTALLATION

---

The 58516-1 Locator Subassembly is intended for professional installation within compatible systems. Proper handling and installation are critical to prevent damage to the component and the host system.

1. **Preparation:** Ensure the host system is powered off and disconnected from any power sources before beginning installation. Gather necessary tools, which may include a small Phillips head screwdriver.
2. **Identification:** Identify the designated mounting location within your system. Refer to your system's specific documentation for precise placement instructions.
3. **Alignment:** Carefully align the locator subassembly with the corresponding slots or mounting points. The gold-colored accents often indicate contact points or alignment guides.
4. **Securing:** Once aligned, gently press the subassembly into place. If a screw is present (as shown in Figure 2.1), use the appropriate screwdriver to secure the component. Do not overtighten the screw, as this may damage the subassembly or the host system.
5. **Verification:** After installation, visually inspect the subassembly to ensure it is seated correctly and securely.

**Caution:**

- Do not apply excessive force during installation.
- Ensure proper grounding procedures are followed if applicable to your system.
- Consult a qualified technician if you are unsure about any installation steps.

## 4. OPERATION

---

The 58516-1 Locator Subassembly is a passive component designed to facilitate connection and alignment. Its operation is integrated into the functionality of the larger system it is part of. Once correctly installed, it performs its function without requiring direct user interaction.

Its primary role is to ensure the precise and stable connection of other components, contributing to the overall reliability and performance of the electronic assembly. No specific operational steps are required for the subassembly itself beyond its initial installation.

## 5. MAINTENANCE

---

The TE Connectivity 58516-1 Locator Subassembly is designed for long-term reliability and typically requires minimal maintenance once installed.

- **Cleaning:** If the subassembly needs cleaning, ensure the host system is powered off and disconnected. Use a soft, dry, lint-free cloth to gently wipe any dust or debris from the exterior. Avoid using liquid cleaners, solvents, or abrasive materials, as these can damage the component.
- **Inspection:** Periodically inspect the subassembly for any signs of physical damage, corrosion, or loose connections. If any issues are observed, consult a qualified technician.
- **Storage:** If the subassembly is not immediately installed, store it in its original packaging in a cool, dry place, away from direct sunlight and extreme temperatures.

## 6. TROUBLESHOOTING

---

As a passive component, the 58516-1 Locator Subassembly typically does not exhibit "malfunctions" in the traditional sense. Issues are usually related to improper installation or damage.

Problem	Possible Cause	Solution
Component does not fit or align correctly.	Incorrect orientation; incompatible system; obstruction in mounting area.	Verify correct orientation. Ensure compatibility with your system. Check for and remove any debris or obstructions.
System malfunction after installation.	Improper installation; damaged subassembly; short circuit.	Re-check installation steps. Inspect subassembly for damage. If issues persist, consult a qualified technician.
Loose connection.	Screw not tightened sufficiently; vibration.	Ensure mounting screw is tightened appropriately (do not overtighten). Secure the host system to minimize vibration.

If troubleshooting steps do not resolve the issue, or if you suspect the component is damaged, contact customer support or a qualified service professional.

## 7. SPECIFICATIONS

---

Attribute	Detail
Model Number	58516-1
Manufacturer	TE Connectivity / AMP Brand
Item Weight	0.01 ounces
ASIN	B00FRBONRS
First Available Date	October 10, 2013

## 8. WARRANTY INFORMATION

---

TE Connectivity products are manufactured to high quality standards. For specific warranty terms and conditions applicable to the 58516-1 Locator Subassembly, please refer to the official TE Connectivity warranty policy available on their corporate website or contact their customer service department. Keep your proof of purchase for any warranty claims.

## 9. CUSTOMER SUPPORT

---

For technical assistance, product inquiries, or support regarding the TE Connectivity 58516-1 Locator Subassembly, please contact TE Connectivity customer service. Contact information can typically be found on the official TE Connectivity website or through your product supplier.

When contacting support, please be prepared to provide the product model number (58516-1) and a detailed description of your issue.