

## Nordyne 624626

# Nordyne 624626 OEM Replacement Furnace Control Board User Manual

Model: 624626

## 1. INTRODUCTION

This manual provides essential information for the safe and effective installation, operation, and maintenance of your Nordyne 624626 OEM Replacement Furnace Control Board. Please read this manual thoroughly before proceeding with any installation or service to ensure proper function and safety.

## 2. SAFETY INFORMATION

**WARNING: Improper installation, adjustment, alteration, service, or maintenance can cause property damage, personal injury, or loss of life. Installation and service must be performed by a qualified installer, service agency, or the gas supplier.**

- Always disconnect electrical power to the furnace before installing or servicing the control board. Failure to do so can result in electrical shock, personal injury, or death.
- Ensure all wiring connections are secure and conform to local and national electrical codes.
- Handle the control board by its edges to avoid damaging electronic components due to static discharge.
- Verify that the replacement board is the correct model for your furnace to prevent operational issues or damage.

## 3. PRODUCT OVERVIEW

The Nordyne 624626 OEM Replacement Furnace Control Board is a critical component designed to manage the operational sequences of your furnace. It ensures proper ignition, flame sensing, blower operation, and safety shutdowns.

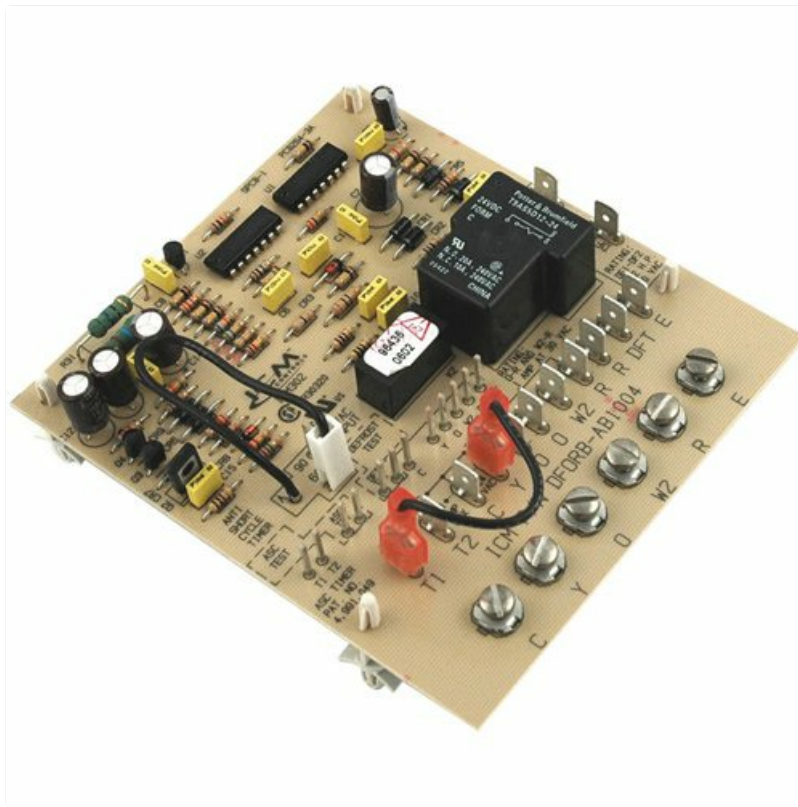


Figure 1: Nordyne 624626 OEM Replacement Furnace Control Board. This image displays the circuit board with various electronic components and connectors, typical for a furnace control unit.

## Key Features:

- Genuine OEM replacement part, ensuring compatibility and reliability.
- Manages furnace ignition, flame sensing, and blower motor operation.
- Integrates safety features to prevent hazardous conditions.

## 4. INSTALLATION

This section outlines the general steps for replacing a furnace control board. Due to the complexity and safety risks involved, it is highly recommended that installation be performed by a qualified HVAC technician.

1. **Power Disconnection:** Locate the main electrical disconnect for the furnace and turn off the power. Additionally, turn off the gas supply to the furnace. Verify power is off using a voltage tester.
2. **Access the Control Board:** Open the furnace access panel to locate the existing control board.
3. **Document Wiring:** Before disconnecting any wires, take clear photographs or make detailed diagrams of all wiring connections to the old control board. This is crucial for correct re-connection.
4. **Disconnect Wires:** Carefully disconnect all wires and connectors from the old control board. Note any specific routing or bundling.
5. **Remove Old Board:** Unmount the old control board from its housing. It may be secured with screws, clips, or standoffs.
6. **Install New Board:** Mount the Nordyne 624626 replacement board in the same location and orientation as the old board. Ensure it is securely fastened.
7. **Reconnect Wiring:** Using your photographs or diagrams, carefully reconnect all wires and connectors to the new control board. Double-check each connection for accuracy and security.
8. **Close Access Panel:** Once all connections are verified, close and secure the furnace access panel.

9. **Restore Power and Gas:** Turn on the gas supply and then restore electrical power to the furnace.
10. **Test Operation:** Initiate a heating cycle to ensure the furnace operates correctly and the new control board is functioning as expected. Observe for any error codes or unusual behavior.

## 5. OPERATING INSTRUCTIONS

The Nordyne 624626 control board operates automatically as part of your furnace system. User interaction is primarily through the thermostat, which sends signals to the control board to initiate heating or cooling cycles.

- Ensure your thermostat is set to the desired mode (Heat/Cool) and temperature.
- The control board will manage the sequence of operations, including igniting the burner, monitoring flame, and controlling the blower fan.
- Refer to your furnace's main user manual for specific operational details and thermostat settings.

## 6. MAINTENANCE

The control board itself requires minimal maintenance. However, regular inspection of the furnace system is recommended to ensure its longevity and proper function.

- **Annual Inspection:** Have a qualified HVAC technician perform an annual inspection of your furnace, including the control board and its connections.
- **Visual Check:** Periodically, with power disconnected, visually inspect the control board for any signs of overheating, burnt components, or loose connections.
- **Cleanliness:** Ensure the area around the control board is free from dust and debris, which can impede airflow and lead to overheating.

## 7. TROUBLESHOOTING

If your furnace is not operating correctly after installing the new control board, consider the following common troubleshooting steps. Always disconnect power before inspecting internal components.

Problem	Possible Cause	Solution
Furnace not starting	No power to furnace; thermostat issue; incorrect wiring; safety lockout.	Check circuit breaker; verify thermostat settings; re-check all wiring connections; reset furnace by cycling power.
Blower not running	Blower motor issue; wiring error; control board fault.	Ensure blower fan is not obstructed; verify blower motor wiring; consult a technician if board fault is suspected.
No ignition	Gas supply off; igniter fault; flame sensor dirty; wiring issue.	Check gas valve; inspect igniter for damage; clean flame sensor; verify wiring to igniter and sensor.
Error codes displayed	Specific system fault.	Refer to your furnace's main manual for error code definitions and troubleshooting steps.

If issues persist after basic troubleshooting, it is recommended to contact a qualified HVAC technician for

diagnosis and repair.

## 8. SPECIFICATIONS

---

- **Model:** Nordyne 624626
- **Type:** OEM Replacement Furnace Control Board
- **Manufacturer:** Nordyne
- **Product Dimensions:** 6 x 6 x 6 inches
- **Item Weight:** 11 ounces
- **Material:** Plastic
- **Display Type:** LCD or LED (if applicable, for status indicators)
- **Operating Temperature:** 40 Degrees Fahrenheit (minimum, typical for indoor furnace environment)
- **ASIN:** B00FPUSF9S

## 9. WARRANTY INFORMATION

---

Warranty coverage for the Nordyne 624626 OEM Replacement Furnace Control Board is typically provided by the manufacturer or the seller at the time of purchase. Please retain your proof of purchase and refer to the warranty documentation included with your original product or contact the seller/manufacturer directly for specific warranty terms and conditions.

## 10. CUSTOMER SUPPORT

---

For technical assistance, installation questions, or warranty claims, please contact the original seller or Nordyne customer support. Have your product model number (624626) and proof of purchase ready when contacting support.

**Nordyne Contact Information:** Please refer to the official Nordyne website or your furnace documentation for the most current contact details.