

Carrier HK42FZ027

Carrier HK42FZ027 OEM Replacement Furnace Control Board User Manual

Model: HK42FZ027

INTRODUCTION

This manual provides essential information for the safe and effective use of the Carrier HK42FZ027 OEM Replacement Furnace Control Board. This high-quality component is designed to replace original equipment manufacturer (OEM) furnace control boards in compatible Carrier furnace systems, ensuring proper operation and control of your heating system.

SAFETY INFORMATION

Important Safety Instructions

- **DANGER: Electrical Shock Hazard.** Disconnect all power to the furnace at the main service panel before installing or servicing this control board. Failure to do so can result in serious injury or death.
- **Qualified Personnel Only.** Installation and servicing should only be performed by a qualified HVAC technician.
- **Static Discharge Precautions.** Electronic components are sensitive to static electricity. Handle the control board by its edges and use appropriate electrostatic discharge (ESD) precautions.
- **Verify Compatibility.** Ensure this control board (HK42FZ027) is the correct replacement part for your specific furnace model before installation.
- **Wiring Accuracy.** Double-check all wiring connections against the furnace's wiring diagram to prevent damage to the control board or furnace.

PRODUCT OVERVIEW

Component Identification

The Carrier HK42FZ027 furnace control board is the central processing unit for your furnace, managing various functions such as ignition, fan operation, and safety limits. Below is an image of the control board with key areas and components visible.

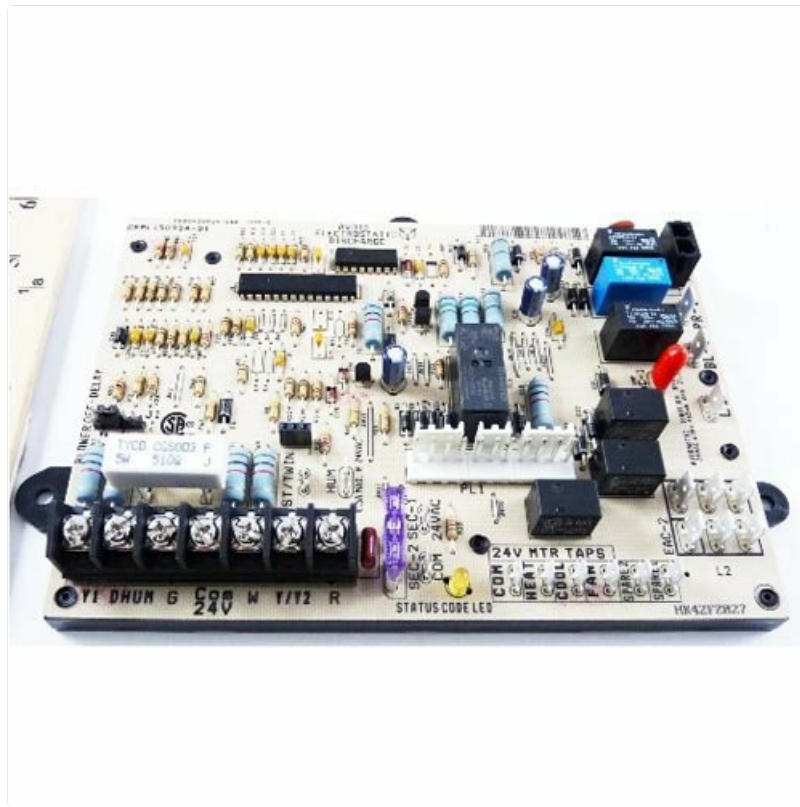


Image Description: This image displays the Carrier HK42FZ027 furnace control board. The board is a rectangular circuit board populated with various electronic components including relays (blue and black rectangular components), capacitors (cylindrical components), resistors, and integrated circuits. Prominent features include:

- A terminal block for low-voltage thermostat wiring (labeled Y1, DHUM, G, C, W, Y/Y2, R).
- A status code LED for diagnostic indications.
- 24V motor taps (labeled COM, HEAT, COOL, FA, SPARE).
- Additional terminals for EAC-2 and L2.
- Various labels such as "ST/TWIN", "HUM", "SEC-2 SEC-Y COM 24VAC" indicating specific functions or connections. The model number "HK42FZ027" is clearly visible on the board.

SETUP AND INSTALLATION

Installation Procedure

Follow these steps carefully when installing the replacement control board. Always prioritize safety.

1. **Power Disconnection:** Turn off all electrical power to the furnace at the main service panel and at the furnace's local disconnect switch.
2. **Access Panel Removal:** Remove the furnace access panel to expose the existing control board.
3. **Document Wiring:** Carefully photograph or sketch the existing wiring connections to the old control board. Label all wires for accurate re-connection. This step is crucial for correct installation.
4. **Disconnect Wires:** Disconnect all wires from the old control board.
5. **Remove Old Board:** Unmount the old control board from the furnace chassis.
6. **Install New Board:** Mount the new Carrier HK42FZ027 control board in the same location, ensuring it is securely fastened.
7. **Reconnect Wiring:** Reconnect all wires to the new control board according to your documentation. Double-

check every connection for accuracy.

8. **Secure Panels:** Replace the furnace access panel.
9. **Restore Power:** Restore electrical power to the furnace.
10. **Test Operation:** Initiate a heating or cooling cycle to verify proper furnace operation. Observe the status code LED for any diagnostic indications.

Note: *If you are unsure about any step, consult a qualified HVAC technician. Improper installation can lead to equipment damage or personal injury.*

OPERATING PRINCIPLES

How the Control Board Functions

The HK42FZ027 control board acts as the central processing unit of your furnace system. It receives signals from the thermostat and various safety devices to control the sequence of operations, ensuring efficient and safe heating. Key functions include:

- **Ignition Sequence:** Manages the precise timing and execution of the burner ignition process.
- **Fan Operation:** Controls the indoor blower fan for heating, cooling, and continuous fan modes based on thermostat demands.
- **Safety Monitoring:** Continuously monitors various safety limits (e.g., high temperature, flame sensor) and initiates a safety shutdown if a fault is detected, often indicated by the status code LED.
- **Accessory Control:** May manage auxiliary components such as humidifiers or electronic air cleaners connected to specific terminals on the board.

MAINTENANCE

Care and Inspection

The control board itself is a sealed electronic component and requires minimal direct maintenance. However, regular inspection of the overall furnace system is recommended to ensure its longevity and proper function.

- **Annual Inspection:** Have a qualified HVAC technician inspect your furnace annually. This inspection should include checking the control board and its connections for any signs of wear, corrosion, or loose wiring.
- **Cleanliness:** Ensure the area around the control board is kept free from excessive dust and debris, which can impede airflow and component cooling.
- **Avoid Moisture:** Keep the control board and the entire furnace area dry to prevent electrical shorts and corrosion.

TROUBLESHOOTING

Common Issues and Diagnostics

The status code LED on the control board provides valuable diagnostic information. When a fault occurs, the LED will flash a specific sequence. Refer to your furnace's specific service manual for a complete list of flash codes and their corresponding meanings.

- **No Power:** Check circuit breakers and the furnace disconnect switch. Ensure all wiring connections to the control board are secure.

- **Furnace Not Starting:** Verify thermostat settings. Check for error codes on the status LED. Ensure the gas supply is on and the igniter is functioning.
- **Fan Not Running:** Check thermostat fan settings. Look for fan-related error codes on the status LED.
- **Intermittent Operation:** This can indicate a loose connection, a failing sensor, or an intermittent fault on the board. Consult a qualified technician for diagnosis.

Warning: Do not attempt to repair the control board yourself. Replacement by a qualified technician is recommended for faulty boards.

SPECIFICATIONS

Product Specifications

Feature	Detail
Model Number	HK42FZ027
Brand	Carrier (OEM Replacement)
Product Dimensions	6 x 6 x 6 inches
Item Weight	13 ounces
Manufacturer	Carrier
ASIN	B00FPOQWPI

WARRANTY AND SUPPORT


Warranty Information






Specific warranty details for this OEM replacement part may vary depending on the seller and the date of purchase. Please refer to your purchase documentation or contact the seller directly for warranty terms and conditions.

Technical Support

For technical assistance or further inquiries regarding the Carrier HK42FZ027 control board, it is recommended to contact a qualified HVAC professional. For official product support, please refer to the original equipment manufacturer (Carrier) documentation or website for their authorized support channels.

Related Documents - HK42FZ027

	<p>Carrier Furnace Control Board with NFC Technology Quick Start Guide</p> <p>Quick start guide for technicians on using Carrier's Service Technician app with NFC-enabled furnace control boards for easier installation, troubleshooting, and servicing.</p>
---	--

	<p>Carrier Non-Condensing Gas Furnace Owner's Manual</p> <p>Comprehensive owner's manual for Carrier non-condensing gas furnaces. Provides essential guidance on installation, safe operation, routine maintenance, and troubleshooting for optimal performance and longevity.</p>
	<p>Carrier 58MCA, 58MTA, 58MVP, 58MXA Gas Furnace User Manual</p> <p>Comprehensive user information manual for Carrier's 58MCA, 58MTA, 58MVP, and 58MXA multipoise, condensing gas furnaces, covering operation, maintenance, safety, and troubleshooting.</p>
	<p>PG80ESU Gas Furnace Troubleshooting Guide</p> <p>A comprehensive troubleshooting guide for the PG80ESU (Minor Series B&C) 80% AFUE, Ultra Low NOx, 4-Way Multipoise Gas Furnace. This guide details diagnostic status codes, sequence of operation, component testing, and step-by-step procedures to identify and resolve furnace issues.</p>
	<p>Carrier 58MVP Condensing Gas Furnace: Installation, Start-Up, and Operating Instructions</p> <p>Installation, start-up, and operating manual for the Carrier 58MVP 4-Way Multipoise Direct-Vent Variable-Capacity Condensing Gas Furnace (Sizes 040-120, Series 140/150). Covers safety, installation, venting, operation, and adjustments.</p>
	<p>Carrier 59MN7C Modulating High Efficiency Condensing Gas Furnace Installation and Service Manual</p> <p>Detailed installation, start-up, operation, service, and maintenance guide for the Carrier 59MN7C Modulating High Efficiency Condensing Gas Furnace. Covers safety, technical procedures, and troubleshooting for HVAC professionals.</p>