

[manuals.plus](#) /

› [SINGER](#) /

› [SINGER 3-Piece Screwdriver Set - Includes; 2 Flat head, 1 Phillips head](#)

SINGER 00216

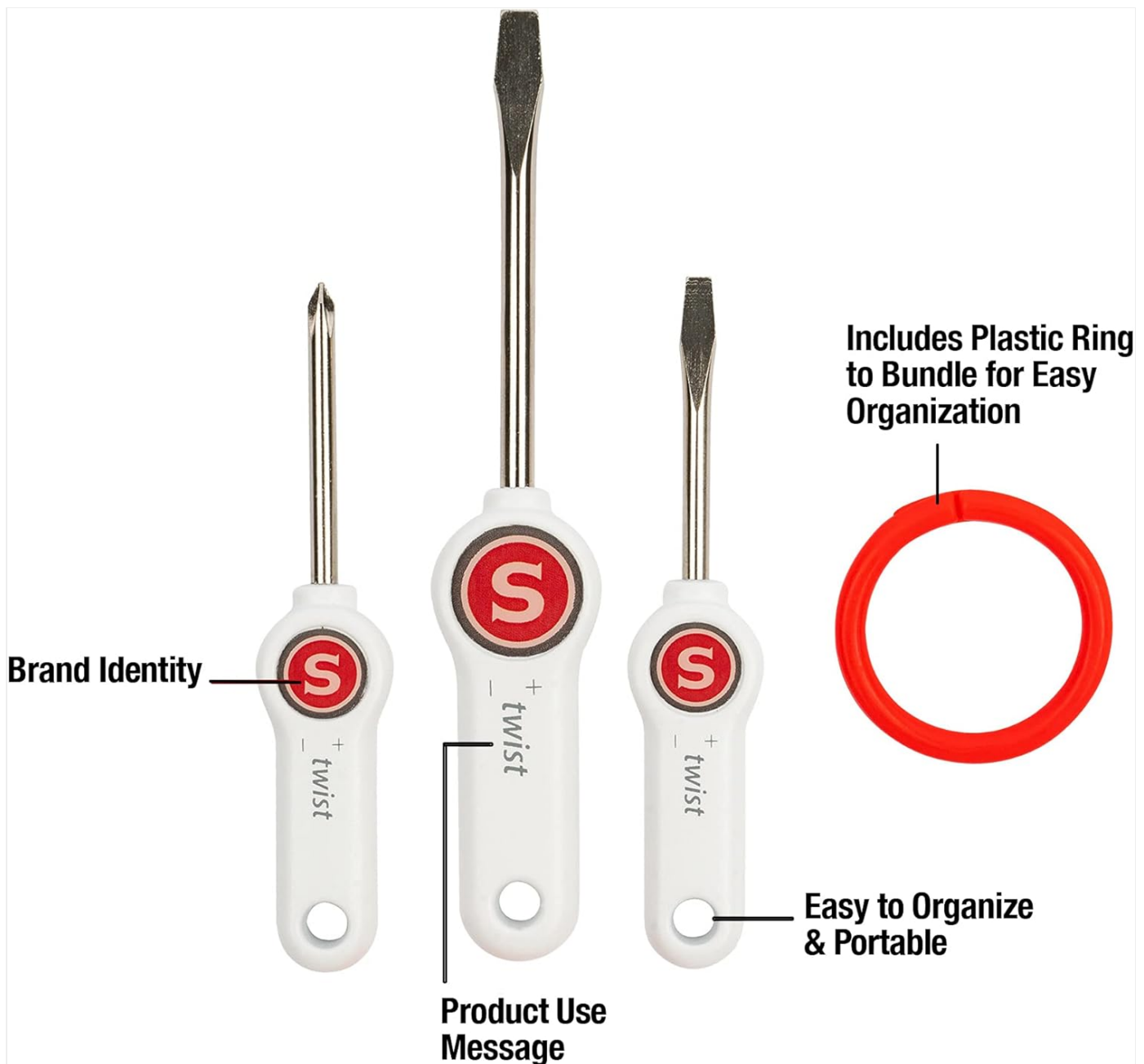
# SINGER 3-Piece Screwdriver Set Instruction Manual

Model: 00216

## PRODUCT OVERVIEW

The SINGER 3-Piece Screwdriver Set is designed to assist with the maintenance and adjustment of sewing machines and other small appliances. This set includes essential tools for tightening and loosening various screws commonly found on such equipment, ensuring smooth and efficient operation.

The set comprises one Phillips head screwdriver and two flat head screwdrivers (one larger, one smaller), all featuring white plastic handles with the distinctive red SINGER "S" logo for a secure grip. A red plastic ring is included for convenient organization and storage of the tools.



**Image Description:** This image displays the three screwdrivers and the red plastic ring. Labels point to the "Brand Identity" (SINGER 'S' logo on handles), "Product Use Message" (Twist indicator), and highlights that the ring is for "Easy Organization & Portable". The image clearly shows the two flat head screwdrivers of different sizes and one Phillips head screwdriver.

### Key Features:

- Set of three screwdrivers for sewing machine maintenance.
- Includes one Phillips head and two flat head screwdrivers.
- Comes with a red ring for bundling and easy organization.
- Suitable for sewing machines and other small appliances.
- Ergonomic white and red plastic handles provide a secure grip.

### SETUP

---

The SINGER 3-Piece Screwdriver Set requires no complex setup. Upon unboxing, remove the screwdrivers from their packaging. The included red plastic ring can be used to keep the screwdrivers together for organized storage. Simply slide the handles of the screwdrivers through the ring to bundle them.



**Image Description:** This image shows the three screwdrivers (one Phillips head, two flat heads) neatly bundled together by the red plastic organization ring. The screwdrivers have white handles with the SINGER logo.

## OPERATING INSTRUCTIONS

---

These screwdrivers are designed for precision tasks on small screws, particularly those found on sewing machines. Always ensure you select the correct type and size of screwdriver head (Phillips or flat head) that matches the screw you intend to adjust or remove.

1. **Identify Screw Type:** Determine if the screw requires a Phillips head (cross-shaped indentation) or a flat head (single slot).
2. **Select Correct Screwdriver:** Choose the screwdriver from the set that matches the screw type and is appropriately sized for a snug fit. Using the wrong size can strip the screw head.
3. **Apply Pressure and Turn:** Place the screwdriver tip firmly into the screw head. Apply steady downward pressure while turning clockwise to tighten or counter-clockwise to loosen.
4. **Common Applications:**
  - Changing needle plates on sewing machines.
  - Adjusting bobbin case tensions.
  - Tightening or loosening screws on other small household appliances.



**Image Description:** This composite image shows four different scenarios of the SINGER screwdrivers being used on a sewing machine. It illustrates how to use the flat head screwdriver to remove or tighten screws on the needle plate and other components, demonstrating the precision and accessibility of the tools for sewing machine maintenance.

## MAINTENANCE

---

To ensure the longevity and optimal performance of your SINGER screwdrivers, follow these simple maintenance guidelines:

- **Cleaning:** Wipe the metal shafts and plastic handles with a clean, dry cloth after each use to remove any dust, lint, or debris. For stubborn grime, a slightly damp cloth can be used, followed by thorough drying.
- **Storage:** Store the screwdrivers in a dry place to prevent rust on the metal parts. Utilize the included red plastic ring to keep the set together, preventing loss and maintaining organization within your tool kit, sewing basket, or drawer.
- **Inspection:** Periodically inspect the screwdriver tips for any signs of wear, bending, or damage. While durable, excessive force or improper use can cause damage.

## TROUBLESHOOTING

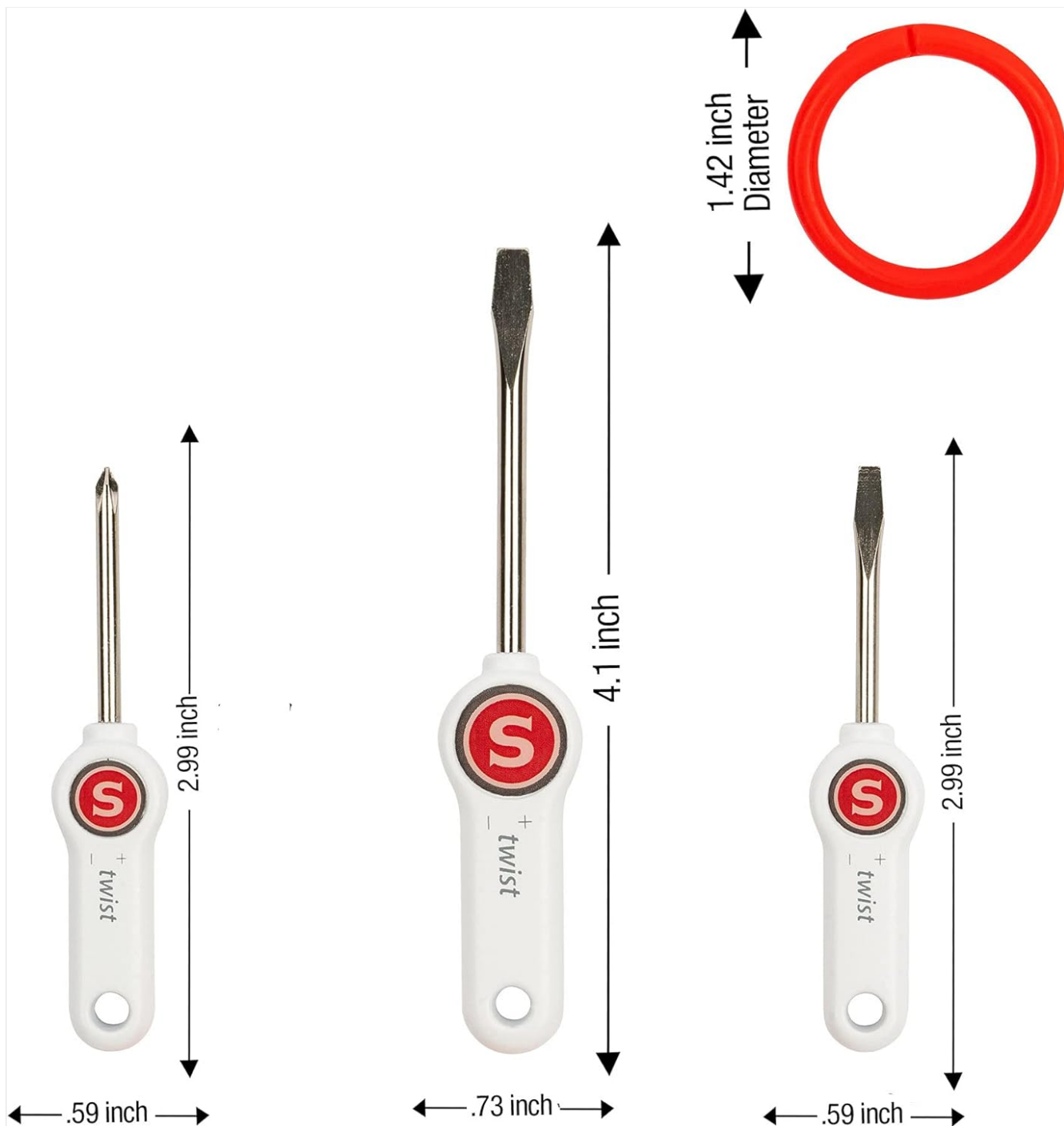
Most issues encountered with screwdrivers are related to improper selection or application. Here are common scenarios and their solutions:

| Problem                                  | Possible Cause   | Solution  |
|--|--|---|
| Screwdriver slips from screw head.       | Incorrect screwdriver type/size, insufficient downward pressure, stripped screw head.    | Ensure you are using the correct Phillips or flat head screwdriver for the screw. Apply firm, steady downward pressure while turning. If the screw head is stripped, specialized tools may be required.       |
| Screw will not turn.                     | Screw is overtightened, rusted, or cross-threaded.                                       | Apply more force carefully, ensuring not to strip the screw. For rusted screws, apply a penetrating oil if appropriate for the material. Do not force excessively to avoid damaging the screw or screwdriver. |
| Screwdriver tip appears bent or damaged. | Excessive force, improper use (e.g., prying), or using on screws too large for the tool. | Discontinue use of the damaged screwdriver to prevent further damage to the screw or injury. Replace the screwdriver if necessary. Always use the correct tool for the job.                                   |

## SPECIFICATIONS

Detailed specifications for the SINGER 3-Piece Screwdriver Set:

| Feature   | Detail   |
|---|--|
| Product Name  | SINGER 3-Piece Screwdriver Set   |
| Model Number  | 00216  |
| Item Weight   | 0.96 ounces  |
| Product Dimensions                                  | 5.3 x 2.7 x 1.7 inches (packaging)   |
| Individual Screwdriver Length (Phillips/Small Flat) | Approx. 2.99 inches  |
| Individual Screwdriver Length (Large Flat)          | Approx. 4.1 inches   |
| Ring Diameter                                       | Approx. 1.42 inches  |
| Material  | Metal shafts, plastic handles  |
| Included Tools                                      | 1 Phillips head screwdriver, 2 Flat head screwdrivers (small & large), 1 Organization ring |
| Date First Available                                | October 7, 2013  |



**Image Description:** This image provides detailed measurements for each component of the screwdriver set. It shows the lengths of the Phillips head and small flat head screwdrivers (2.99 inches), the large flat head screwdriver (4.1 inches), and the diameter of the red organization ring (1.42 inches).

## WARRANTY AND SUPPORT







Specific warranty information for the SINGER 3-Piece Screwdriver Set is not provided within this manual. For details regarding product warranty or customer support, please refer to the product packaging or contact SINGER customer service directly through their official website or contact channels.

For additional resources or to explore other SINGER products, you may visit the official SINGER store on Amazon: [SINGER Store](#).





## Related Documents - 00216

|  |   |
|--|---|
|   | <p><a href="#">Singer 500A Sewing Machine Parts List and Diagrams</a></p> <p>Explore the official parts list and detailed diagrams for the Singer 500A sewing machine, including electrical components for related models. Find part numbers for maintenance and repair.</p>  |
| <br>6199/6180/6160<br>KULLANIM KILAVUZU | <p><a href="#">Singer 6199/6180/6160 Dikiş Makinesi Kullanım Kılavuzu</a></p> <p>Singer 6199, 6180 ve 6160 ev tipi dikiş makineleri için kapsamlı kullanım kılavuzu. Bu belge, makinenin güvenli kurulumu, tüm dikiş fonksiyonlarının kullanımı, düzenli bakım ve sorun giderme adımları hakkında detaylı bilgiler sunar.</p> |
|                                       | <p><a href="#">Singer 107W5 Sewing Machine Parts List and Index</a></p> <p>Comprehensive parts list and index for the Singer 107W5 sewing machine, detailing components for the machine head, bobbin winder, and accessories.</p>   |
|                                       | <p><a href="#">Singer Sewing Machines Parts List for Models 114-3 and 114-4</a></p> <p>Comprehensive parts list for Singer sewing machine models 114-3 and 114-4, detailing components and part numbers for maintenance and repair by The Singer Manufacturing Company.</p>   |
|                                       | <p><a href="#">Singer 1408/1409 Instruction Manual</a></p> <p>Comprehensive instruction manual for Singer 1408 and 1409 sewing machines. Covers safety, operation, maintenance, and troubleshooting for home use.</p>   |
|                                       | <p><a href="#">Singer 9960 Sewing Machine Instruction Manual</a></p> <p>Comprehensive instruction manual for the Singer 9960 sewing machine, covering operation, safety, stitch selection, maintenance, and troubleshooting for household use.</p>  |