

Hager 5100 Series

Hager 5100 Series Heavy Duty Surface Door Closer Instruction Manual

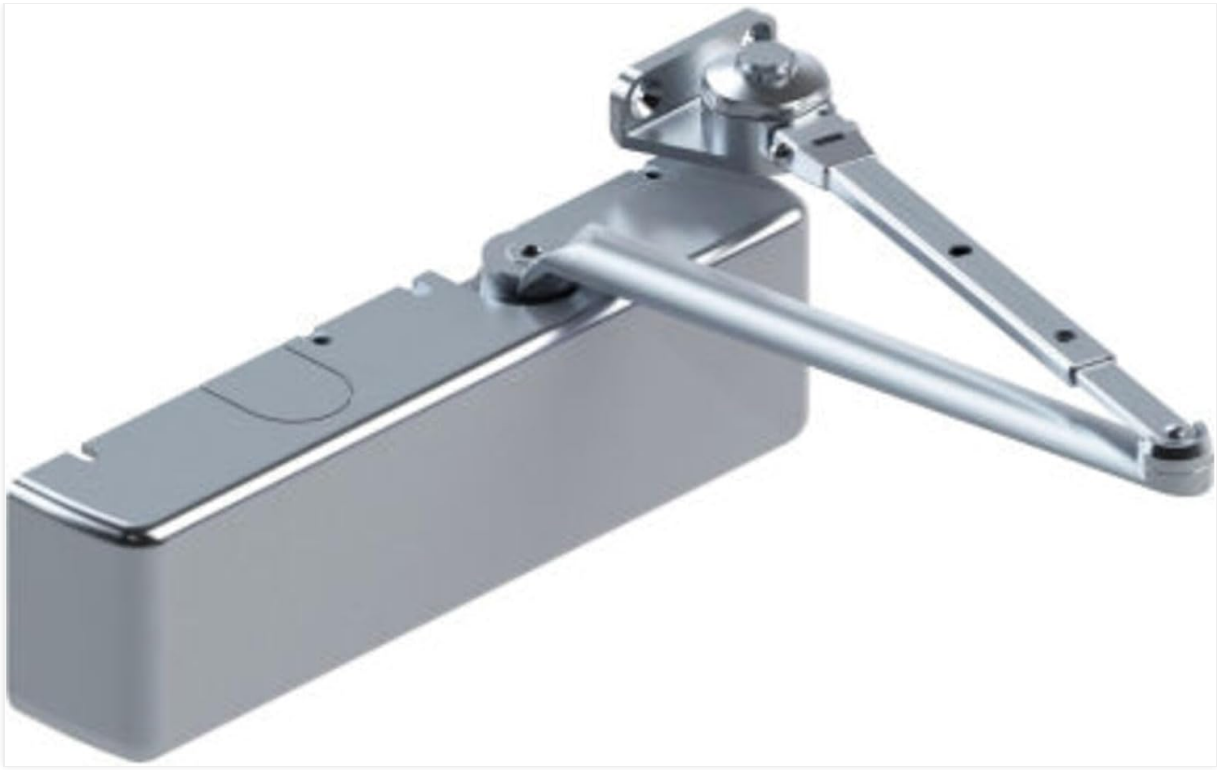
Model: 5100 Series

PRODUCT OVERVIEW

The Hager 5100 Series Grade 1 door closer is engineered for heavy-duty applications in high-traffic and demanding environments such as schools and hospitals. Constructed from durable cast iron, this surface door closer is designed for longevity and reliable performance. It features a multi-mount design and a non-handed configuration for versatile installation. Key functionalities include an adjustable spring size (1-6) and a delayed action closing feature, allowing for controlled door closure between 90° and 70° over a minimum of 20 seconds, which can be further adjusted. The closer also incorporates a hold-open arm for convenience.

Key Features:

- Non-Handed design for universal application.
- BHMA Certified ANSI A156.4 for performance standards.
- UL/cUL Listed for up to 3 hours, ensuring fire safety compliance.
- Constructed from robust Cast Iron.
- Backed by a Lifetime Warranty.
- Adjustable spring power (sizes 1-6).
- Delayed action closing feature.
- Hold-open arm functionality.



This image displays the Hager 5100 Series heavy-duty surface door closer. It features a rectangular main body in a sprayed aluminum finish, with an adjustable arm mechanism extending from the top. The arm includes a hold-open function, and the overall construction is designed for robust performance.

SETUP AND INSTALLATION

The Hager 5100 Series door closer is designed for multi-mount applications and is non-handed, simplifying the installation process for various door types and orientations. Installation typically involves mounting the closer body and arm assembly to the door and frame using screws.

General Installation Steps:

1. **Preparation:** Ensure the door and frame are structurally sound and clear of obstructions. Identify the desired mounting position (e.g., parallel arm, regular arm, top jamb).
2. **Mounting the Closer Body:** Secure the closer body to the door or frame using appropriate fasteners. Refer to the specific mounting template provided with your unit for precise hole placement.
3. **Attaching the Arm Assembly:** Connect the main arm to the closer spindle and the forearm to the door frame or door, depending on the mounting type. Ensure all connections are secure.
4. **Initial Adjustment:** After installation, perform initial adjustments for closing speed and latching speed.

Note: Always consult the detailed installation template and instructions included with your specific Hager 5100 Series unit for precise measurements, drilling patterns, and mounting configurations. Professional installation is recommended for optimal performance and safety.

OPERATING AND ADJUSTMENTS

The Hager 5100 Series door closer offers several adjustable features to customize door operation according to specific requirements.

Spring Power Adjustment:

- The closer's spring power can be adjusted to suit door weight and size, ranging from sizes 1 to 6.

- To increase or decrease spring power, turn the power adjustment shaft clockwise or counter-clockwise, respectively. Refer to the closer body for the location of the adjustment shaft.

Delayed Action Feature:

- This feature controls the closing speed of the door between 90° and 70° of opening.
- The factory setting ensures a minimum closing time of 20 seconds in this range, which can be adjusted to be even slower for specific accessibility or traffic flow needs.
- Adjustment is typically done via a dedicated valve on the closer body. Turn clockwise to slow down, counter-clockwise to speed up (within safe limits).

Hold-Open Arm:

- The hold-open arm allows the door to remain open at a desired angle until manually closed.
- Engage or disengage the hold-open function as per the arm's design, typically by tightening or loosening a knob or screw on the arm assembly.

Caution: Over-adjusting or forcing adjustment valves can damage the closer. Make small adjustments and test the door's operation after each change. If unsure, consult a qualified technician.

MAINTENANCE

Regular maintenance ensures the longevity and optimal performance of your Hager 5100 Series door closer.

- **Periodic Inspection:** Annually inspect the closer body, arm assembly, and mounting screws for any signs of wear, damage, or looseness.
- **Tighten Fasteners:** Ensure all mounting screws and arm assembly fasteners are securely tightened. Do not overtighten.
- **Cleanliness:** Keep the closer body and arm free from dirt and debris. Wipe with a soft, damp cloth if necessary. Avoid abrasive cleaners.
- **Functionality Check:** Periodically test the door's closing and latching speeds, as well as the delayed action and hold-open features, to ensure they are operating correctly. Readjust if necessary following the 'Operating and Adjustments' section.
- **Lubrication:** The internal mechanisms of the closer are factory-lubricated and sealed. No external lubrication is typically required.

If any components appear damaged or excessively worn, contact Hager support or a qualified technician for replacement parts or service.

TROUBLESHOOTING

This section addresses common issues you might encounter with your Hager 5100 Series door closer.

Problem	Possible Cause	Solution
Door closes too fast or too slow.	Improper adjustment of closing or latching speed valves.	Refer to the 'Operating and Adjustments' section to fine-tune the closing and latching speed valves. Make small adjustments.

Problem	Possible Cause	Solution
Door does not close completely.	Insufficient spring power; Latching speed too slow; Obstruction; Misaligned door/frame.	Increase spring power (refer to 'Operating and Adjustments'). Increase latching speed. Check for physical obstructions. Inspect door and frame for proper alignment.
Door slams shut.	Closing or latching speed too fast; Excessive spring power.	Decrease closing and latching speeds. Reduce spring power if necessary.
Oil leakage from closer body.	Damaged seals or internal components.	This indicates a serious issue. The closer requires professional service or replacement. Contact Hager support immediately.
Hold-open function not engaging/disengaging.	Arm assembly issue; Adjustment screw loose/tight.	Inspect the hold-open mechanism on the arm. Adjust or tighten the relevant screw as per the arm's design.

For issues not listed here or if troubleshooting steps do not resolve the problem, please contact Hager customer support.

SPECIFICATIONS

Model Number	126475
Brand	Hager
Series	5100 Series
Material	Cast Iron
Grade	Grade 1 (Heavy Duty)
Finish	Sprayed Aluminum
Spring Size	Adjustable 1-6
Mounting Type	Multi-Mount, Surface
Handing	Non-Handed
Certifications	BHMA Certified ANSI A156.4, UL/cUL Listed (up to 3 hours)
Product Dimensions	Approximately 15.5 x 8 x 3 inches
Recommended Uses	High-traffic areas, schools, hospitals
UPC	798550264750

WARRANTY INFORMATION

The Hager 5100 Series door closer is backed by a **Lifetime Warranty**. This warranty covers defects in materials and workmanship under normal use and service. For specific terms, conditions, and claim

procedures, please refer to the official warranty documentation provided with your product or visit the Hager Companies website.

CUSTOMER SUPPORT

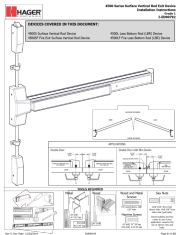
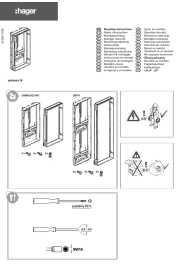
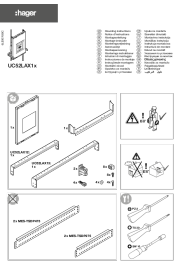
Should you require assistance with installation, operation, maintenance, or troubleshooting, please contact Hager Companies customer support.

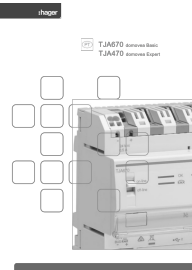
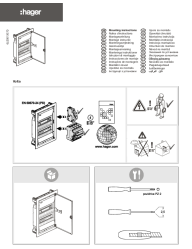
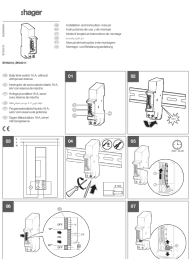
- **Online Resources:** Visit the official Hager Companies website for product documentation, FAQs, and additional support materials.
- **Contact Information:** Refer to the packaging or the Hager Companies website for the most current contact details, including phone numbers and email addresses for technical support.

When contacting support, please have your product model number (126475) and any relevant purchase information ready.

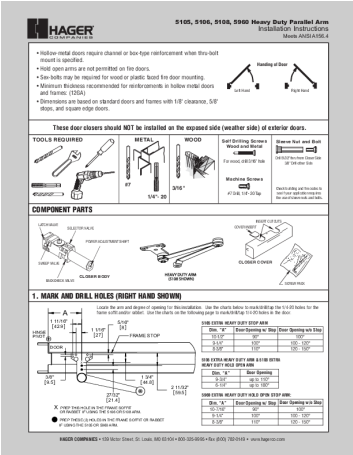
© 2023 Hager Companies. All rights reserved.

Related Documents - 5100 Series

	<p>Hager 4500 Series Surface Vertical Rod Exit Device Installation Instructions</p> <p>Detailed installation guide for the Hager 4500 Series Surface Vertical Rod Exit Device, including models 4500S, 4500SF, 4500L, and 4500LF. Covers parts, tools, and step-by-step assembly for professional installation.</p>
	<p>Hager univers N Mounting Instructions for U96N/UG31N1 and U97N</p> <p>Detailed installation guide for Hager's univers N electrical enclosure system, covering models U96N/UG31N1 and U97N. Provides step-by-step instructions, required tools, torque specifications, and safety warnings for proper mounting and assembly.</p>
	<p>Hager UC52LAX1x Mounting Instructions for Electrical Enclosures</p> <p>Detailed mounting instructions and guide for the Hager UC52LAX1x series, including UC52LAX12 and UC52LAX13, for installing electrical components in enclosures.</p>

	<p>Hager TJA670/TJA470 domovea Basic/Expert Installation Manual</p> <p>This document provides a comprehensive guide for installing and configuring the Hager TJA670 domovea Basic and TJA470 domovea Expert systems. It covers system overview, software installation, initial setup, project management, available functions, device details, and integration with external services.</p>
	<p>Hager Volta Distribution Board Mounting Instructions</p> <p>Comprehensive mounting instructions for Hager Volta series surface and flush-mounted electrical distribution boards, detailing installation steps, component assembly, and compliance with IEC/EN standards.</p>
	<p>Hager EHN010/EHN011 Daily Time Switch Installation and Instruction Manual</p> <p>Comprehensive guide for installing and operating the Hager EHN010 and EHN011 daily time switches. Includes technical specifications, safety instructions, and usage guidelines.</p>

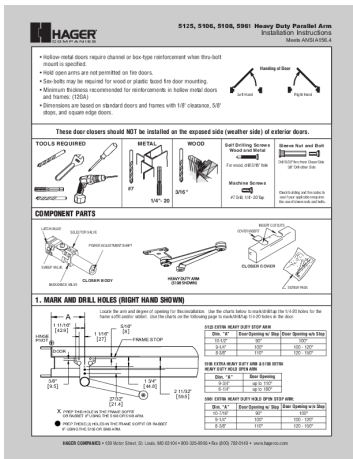
Documents - Hager – 5100 Series



[pdf] Instructions Dimension Guide

Layout 1 Hager 5100 Series Parallel Arm Installation Instructions s3 absupply net amazonaws ||| 5105, 5106, 5108, 5960 Heavy Duty Parallel Arm Installation Instructions Meets ANSI A156.4 Hollow-metal doors require channel or box-type reinforcement when thru-bolt mount is specified. Hold open arms are not permitted on fire doors. Sex-bolts may be required for wood or plastic faced fire door...

lang:en score:31 filesize: 825.52 K page_count: 6 document date: 2012-06-07

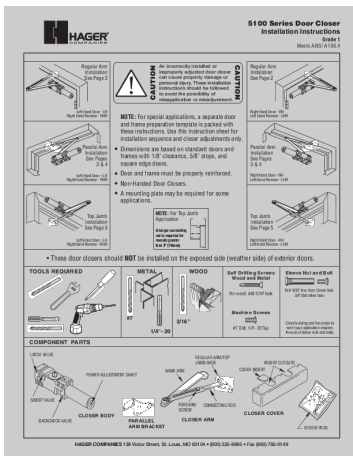


[\[pdf\]](#) Instructions Dimension Guide

Layout 1 Hager 5100 Series Stop Arm Installation Instructions s3 absupply net amazonaws |||

5125, 5106, 5108, 5961 Heavy Duty Parallel Arm Installation Instructions Meets ANSI A156.4 Hollow-metal doors require channel or box-type reinforcement when thru-bolt mount is specified. Hold open arms are not permitted on fire doors. Sex-bolts may be required for wood or plastic faced fire door...

lang:en score:31 filesize: 758.36 K page_count: 6 document date: 2012-06-07



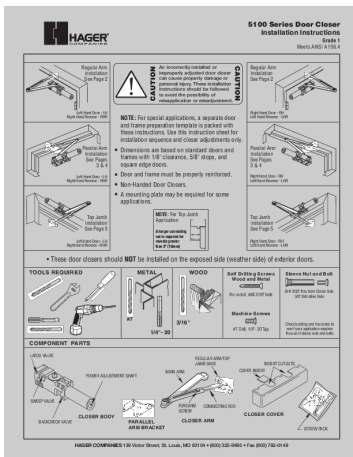
[\[pdf\]](#) Instructions Dimension Guide

5100 p1 5 6 11 05 ai thensley Hager Installation Instructions s3 absupply net amazonaws JustDoorToolZ |||

5100 Series Door Closer Installation Instructions Grade 1 Meets ANSI A156.4

Regular Arm Installation See Page 2 An incorrectly installed or improperly adjusted door closer can cause property damage or personal injury. These installation instructions should be followed to avoid the possibility of m...

lang:en score:29 filesize: 741.89 K page_count: 6 document date: 2012-06-07



[\[pdf\]](#) Instructions Dimension Guide

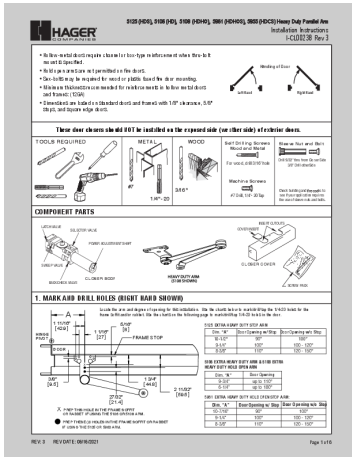
5100 p1 5 6 11 05 ai thensley Series Door Closer Installation Instructions 90° RIGHT ANGLE FRAME

HAND DOOR POSITION OF MAIN ARM WHEN ASSEMBLING TO SPINDLE 10 13 16 275mm 1 15 49mm 2 holes for 4 20 machine screws instructions should be followed to avoid the possibility of misapplication or misadjustment NOTE Right Hand Reverse RHR For special applications a separate door and frame preparation template is packed with these Use this instruction sheet installation sequence closer adjustments only Dimensions are based on standard series Hager dvwi9Inoau63q cloudfront net hager d3461j9i62ilv1 2019 06 docs Instruction Sheet jmacfiles s3 amazonaws |||

5100 Series Door Closer Installation Instructions Grade 1 Meets ANSI A156.4

Regular Arm Installation See Page 2 An incorrectly installed or improperly adjusted door closer can cause property damage or personal injury. These installation instructions should be followed to avoid the possibility of m...

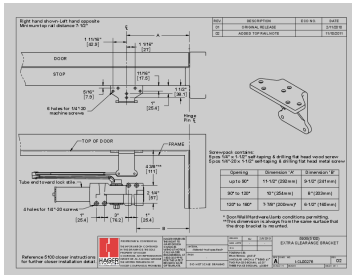
lang:en score:28 filesize: 720.51 K page_count: 6 document date: 2012-06-07



[\[pdf\]](#) Instructions Dimension Guide

i CL00238 installation instructions 5100 Series Installation Arms bigc products s3 amazonaws ||| 5125 HDS , 5106 HD , 5108 HDHO , 5961 HDHOS , 5955 HDCS Heavy Duty Parallel Arm Installation Instructions I-CL00238 Rev 3 Hollow-metal doors require channel or box-type reinforcement when thru-bolt mount is specified. Hold open arms are not permitted on fire doors. Sex-bolts may be require...

lang:en **score:28** filesize: 4.03 M page_count: 6 document date: 2021-06-16



[\[pdf\]](#) Confidentiality Request Letter

I CL00276 5935 Bracket Install HAGERCO dbrick STLHQMKT6005DB Hager 5100 Series Extra Clearance Installation Instructions s3 absupply net amazonaws |||

Right hand shown-Left hand opposite Minimum top rail distance 7-1/2 1 11/16 42.9 DOOR STOP 5/16 7.9 6 holes for 1/4 -20 machine screws CL A 1 1/16 27 REV. 01 02 DESCRIPTION ORIGINAL RELEASE ADDED TOP RAIL NOTE 11/16 17.5 1 25.4 1 1/2 38.1 Hinge Pin CL ECO NO. DATE 2/11/2010 11/10/2011 ...

lang:en **score:28** filesize: 108.83 K page_count: 1 document date: 2012-06-18



[\[pdf\]](#) Reference Guide Specifications Guide

PDQ Quick Cross Reference Guide Manufacturer Top Notch Distributors Inc media topnotchinc docs pricebooks |||

Cross Reference Guide Customer Support Customer Support Our Customer Support team is available to ... ommercial Exit Device 4200 Series 10 DoorClosers 7100 Series Institutional Grade 1 Closer 11 **5100 Series** Commercial Grade 1 Closer 11 5300/5500 Series Commercial Grade 1 Closer 11 3100 Se...

lang:en **score:24** filesize: 2.01 M page_count: 16 document date: 2023-05-17



[\[pdf\]](#) Warranty Catalog

Hager 5100 Series Lock topnotchinc docs catalogs

5100 SERIES 5100 Series Hager **5100 Series** Grade 1 door closer is constructed of cast iron, which makes it ideal for heavy duty, high use and abusive environments. Hager door closers are the only closers in the industry that are both BHMA certified and backed by a lifetime warranty. Tempered springs...

lang:en **score:24** filesize: 538.15 K page_count: 5 document date: 2012-06-04



[pdf] Reference Guide Specifications Guide Borchure

PDQ Quick Cross Reference Guide 8475646 fs1 hubspotusercontent na1 net hubfs Website Content Literature Brochures |||

Cross Reference Guide Customer Support Customer Support Our Customer Support team is available to ... ommercial Exit Device 4200 Series 10 DoorClosers 7100 Series Institutional Grade 1 Closer 11 **5100 Series** Commercial Grade 1 Closer 11 5300/5500 Series Commercial Grade 1 Closer 11 3100 Se...

lang:en score:24 filesize: 1.87 M page_count: 16 document date: 2024-02-21



[PDQ Cross Reference Guide: Locks, Exit Devices, Door Closers, Hinges](#)

A comprehensive cross-reference guide from PDQ, detailing specifications and cross-compatibility for their range of mortise locks, cylindrical locks, exit devices, door closers, and commercial hinges. Includes typical applications and situations.

lang:en score:24 filesize: 1.83 M page_count: 16 document date: 2025-08-22



[pdf] Instructions

2021 Hager Price Book Effective 1 21 1121 dwi9lnoau63q cloudfront net hager pricebooks door hardware hagerco Commercial Hinges Whenever possible instructions or alarm tone only and must be ordered seperately list price v 1605628644

door hardware PRICE BOOK #14 Part # 5-500-2021 effective 1/1/2021 Address Hager Companies 139 Victo ... Quick Ship Items and ship in 24 hours. 1/1/2021 88 www.hagerco.com TABLE OF CONTENTS A Arms, **5100 Series** Main Arm Assembly.....6 E...

lang:en score:24 filesize: 10.99 M page_count: 581 document date: 2020-11-17



Cross Reference Guide

[\[pdf\]](#) Reference Guide Specifications Guide Borchure

Cross Reference Guide Distributors PDQ Quick 8475646 fs1 hubspotusercontent na1 net hubfs Website

Content Literature Brochures Architects |||

Cross Reference Guide Customer Support Customer Support Our Customer Support team is available to ... ommercial Exit Device 4200 Series 10 DoorClosers 7100 Series Institutional Grade 1 Closer 11 **5100 Series** Commercial Grade 1 Closer 11 5300/5500 Series Commercial Grade 1 Closer 11 3100 Se...

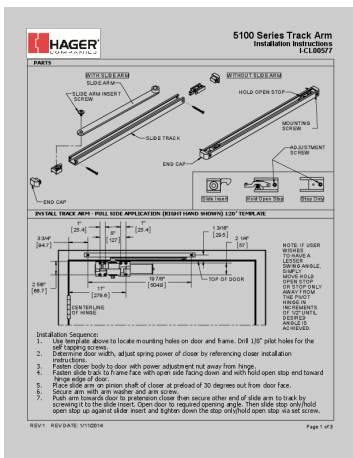
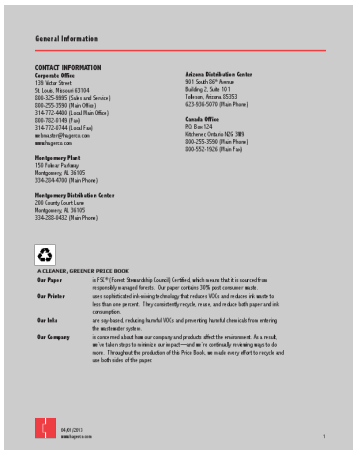
lang:en **score:23** filesize: 1.94 M page_count: 16 document date: 2022-12-02

[\[pdf\]](#) Instructions

General Information Access Hardware Supply red are items included in the Hager Quick Ship Program they will ship three templates or installation instructions Packaging HAGER 2013 Complete Price Book accesshardware 2014 08

General Information CONTACT INFORMATION Corporate Office 139 Victor Street St. Louis, Missouri 63104 ... 15775 115776 04/01/2013 www.hagerco.com 73 Door Controls TABLE OF CONTENTS A Arm Assemblies **5100 Series** Extra Heavy Duty Hold-Open Cushion Stop..... 6 **5100 Series** Extra Heavy Duty Cushion...

lang:en **score:23** filesize: 26.56 M page_count: 558 document date: 2013-08-28



[\[pdf\]](#) Installation Guide Instructions

I CL00577 5100 Closer With Track Arm Instructions HAGERCO dbrick STLHQMKT6305DB Hager

5100SeriesTrackArm Installation s3 absupply net amazonaws |||

PARTS WITH SLIDE ARM SLIDE ARM SLIDE ARM INSERT SCREW SLIDE TRACK END CAP **5100 Series** Track Arm Installation Instructions I-CL00577 WITHOUT SLIDE ARM HOLD OPEN STOP MOUNTING SCREW ADJUSTMENT SCREW END CAP Slide Insert Hold Open Stop Stop Only INSTALL TRACK ARM - PULL SIDE APPLICATION RIGHT ...

lang:en **score:22** filesize: 196.68 K page_count: 3 document date: 2014-01-21



[\[pdf\]](#) Reference Guide Specifications Guide

QUICK CROSS REFERENCE GUIDE PDQ Locks DUMMY 1 SIDE MR211 BM AM08 45H1DT ML2050

M9001 MA12 DI DO 8293 L0170 AU865 2 SIDES MR207 AM09 45H2DT ML2071 M9002 MA18 DL4117

D963 S 4877 L463 357 MJ134LH Cross Reference* *Note Functions are equal but form may differ

MORTISE CYLINDER DEADBOLT Reference Guide pdqlocks product data Quick |||

QUICK CROSS REFERENCE GUIDE Customer Support Customer Support Our Customer Support team is availa ... ommercial Exit Device 4200 Series 10 DoorClosers 7100 Series Institutional Grade 1 Closer 11 **5100 Series** Commercial Grade 1 Closer 11 5300/5500 Series Commercial Grade 1 Closer 11 3100 Se...

lang:en **score:22** filesize: 1.1 M page_count: 16 document date: 2021-06-03

2015 Price Book Changes	
1. February 4, 2015 – Architectural Hinges – Page 9 – PRICE CHANGE - Changed \$103.30 under Slip-In Hinges to \$105.35	
2. February 12, 2015 – Architectural Hinges – Page 21 – Product 002 (Architectural Hinges) Size 2 1/2 x 4 - the list elsewhere the price is \$117.00, the list is \$122.	
3. February 12, 2015 – Buttons – Page 13 – Bearing Replacement 10 added Close and Push Buttons as listed on page of price. Page 16 - Locks Description added "Close" to Buttons	
4. February 13, 2015 – Locks – Page 18 – Product 2 036/326 – finishes revised to read: US200/US200A/US200/US200	
5. February 13, 2015 – Locks – Page 20 – Function 3460 – 1420 with a price of \$149.00 added after US200.	
6. February 13, 2015 – Locks – Page 30 – Function 3600 – Function US200 was added with a price of \$177.00.	
7. February 13, 2015 – Locks – Page 6, 32 and 36 – added quantity of 10 to product 3600.	
8. February 13, 2015 – Locks – Page 6 and 10 – product 3600, finish: 030 changed from \$11.65 to \$12.40.	
9. February 16, 2015 – Electrical Products – Page 7 – finish on Product 079/0204 has been changed to Black Plastic.	
10. February 16, 2015 – Gate – Page 4 – The list elsewhere of Electrical Gate Set 0204 should be EUEL.	
11. February 16, 2015 – Sliding Door Hardware – Page 6 and 14 – Product 0020 was \$23.00 and \$23.00. The corrected price on both is \$25.00.	
12. February 16, 2015 – Sliding Door Hardware – Page 14 and 21 – Product 0021-150 was \$80.00 and \$82.00. The corrected price on both is \$83.00.	
13. February 16, 2015 – Sliding Door Hardware – Page 21 and 32 – Product 0083 was \$3.45 and \$3.75. The corrected price on both is \$3.60.	
14. February 16, 2015 – Trim & Auxiliary – Page 7 – Product 9555 US200 and US200 (Not too thick) have outage added.	
15. February 17, 2015 – Sliding Door Hardware – Page 21 – Product 0021 Series Description changed from "Sliding door (slat) in aluminum track & hardware for 1-1/2" (20 mm) and 1-3/4" (40 mm) Slid door" to "Hangers for track & hardware for 1-1/2" (20 mm), 1-3/4" (40 mm) Slid door.	
16. February 17, 2015 – Gate – Page 4 – changed price from \$605.00 to \$601.75 on the wall mount extender (2-075-0000).	
17. March 4, 2015 – Trim & Auxiliary – Page 7 – changed price from \$10.00 net ending charge to \$10.00 net ending charge.	
18. March 4, 2015 – Architectural Hinges – Table of Contents page - changed Door Hinges from pages 60-67 to pages 70-77.	
19. March 5, 2015 – Electrical Products – 0400 Series Table of Contents page (page 10) - changed all items that had page 10 to page 16.	
20. March 5, 2015 – Electrical Products – Page 10 – added entries, listed price, table, data requested and feature products.	

[pdf] Instructions

Architectural Hinges Access Hardware Supply If the hinge to be priced has additions START WITH THE

PRICE OF Contact Hager Companies Sales and Service for instructions Items with price in bold red are

Quick Ship items ship three days or less HAGER 2015 Complete Price Book accesshardware 09

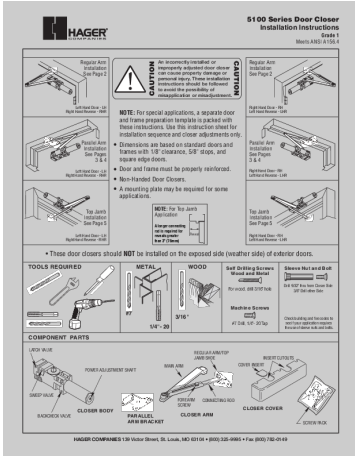
2015 Price Book Changes 1. February 4, 2015 Architectural Hinges Page 9 PRICE

CHANGE - Changed 1 ... 5 165006 170853 170860 04/01/2015 www.hagerco.com 75

Door Controls TABLE OF CONTENTS A Arms, **5100 Series** Main Arm

Assembly..... 4 E...

lang:en score:22 filesize: 9.63 M page_count: 566 document date: 2015-06-12



[pdf] Instructions Dimension Guide

5100 p1 5 6 11 05 ai thensley series installation instructionsHAGER PAR Heavy Duty Surface Door

Closer with Push or Pull Si Locksmith Keyless TEST STORE5100 instructionscdn shopify s files 1 0692

7630 3614 instructions v 1714139168 |||

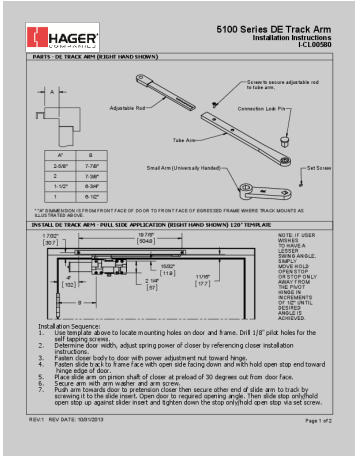
5100 Series Door Closer Installation Instructions Grade 1 Meets ANSI A156.4

Regular Arm Installation See Page 2 An incorrectly installed or improperly adjusted

door closer can cause property damage or personal injury. These installation

instructions should be followed to avoid the possibility of m...

lang:en score:22 filesize: 720.51 K page_count: 6 document date: 2012-06-07



[pdf] Installation Guide Instructions

I CL00580 5100 Closer With DE Track Arm Instructions HAGERCO dbrick STLHQMKT6305DB Hager

DETA Intallation s3 absupply net amazonaws |||

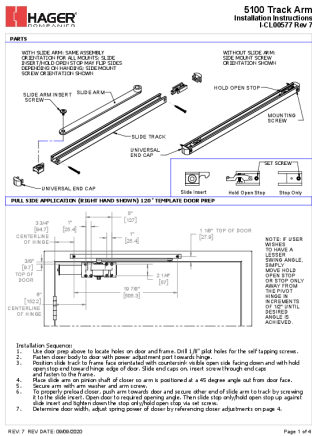
PARTS - DE TRACK ARM RIGHT HAND SHOWN A Adjustable Rod **5100 Series** DE

Track Arm Installation Instructions I-CL00580 Screw to secure adjustable rod to tube

arm, Connection Lock Pin Tube Arm A* 2-5/8 2 1-1/2 1 B 7-7/8 7-3/8 6-3/4 6-1/2 Small

Arm Universally Handed Set Screw * A DIMM...

lang:en score:22 filesize: 118.52 K page_count: 2 document date: 2014-03-04



[pdf] Instructions

I CL00577 Rev 6 Sheet1 dforney Hager 5100 Series St Index of 2023 02 Standard Slide Track Arm Installation Instructions trudoor |||

PARTS WITH SLIDE ARM: SAME ASSEMBLY ORIENTATION FOR ALL MOUNTS; SLIDE INSERT/HOLD OPEN STOP MAY FLIP SIDES DEPENDING ON HANDING; SIDE MOUNT SCREW ORIENTATION SHOWN SLIDE ARM INSERT SLIDE ARM SCREW SLIDE TRACK UNIVERSAL END CAP 5100 Track Arm Installation Instructions I-CL00577 Rev 7 WITHOUT SLIDE A...

lang:en score:22 filesize: 882.68 K page_count: 4 document date: 2020-09-14



[pdf]

Hager 5100 Series prod trudoor media s3 us west 2 amazonaws 2019 06 18094029 |||

5100 Series 5100 Series Closers are heavy duty door closers constructed of cast iron to be installed ... for doors with a maximum weight of 330 lbs. 2016 www.hagerco.com 5 DOOR CLOSERS HOW TO ORDER **5100 SERIES** - HOW TO ORDER 5100 PAR 1-6 ALM HD FC RH SX1G DLY Mount MLT - Multi-Mount PAR - Parall...

lang:en score:20 filesize: 595.03 K page_count: 7 document date: 2022-04-18



[pdf] Specifications Warranty Accessories

5100 Series Hager prod trudoor media s3 us west 2 amazonaws 2019 06 21110600 d3461j9i62ilv1 cloudfront net

5100 Series Grade 1 Heavy Duty Surface Door Closer - Ideal for schools, hospitals, and other high-use environments - To maximize hinge life and assist in achieving ADA compliance, Hager recommends the use of anti-friction or ball bearing hinges with our door closer products. - Accessories may not be...

lang:en score:20 filesize: 43.96 K page_count: 1 document date: 0000-00-00

[\[pdf\]](#) Instructions

I CL00577 Rev 6 Sheet1 dforney Hager 5100 Series Standard Slide Track Arm Installation Instructions
prod trudoor media s3 us west 2 amazonaws 2023 02 16154337 |||

PARTS WITH SLIDE ARM: SAME ASSEMBLY ORIENTATION FOR ALL MOUNTS;
SLIDE INSERT/HOLD OPEN STOP MAY FLIP SIDES DEPENDING ON HANDING;
SIDE MOUNT SCREW ORIENTATION SHOWN SLIDE ARM INSERT SLIDE ARM
SCREW SLIDE TRACK UNIVERSAL END CAP 5100 Track Arm Installation
Instructions I-CL00577 Rev 7 WITHOUT SLIDE A...

lang:en score:20 filesize: 882.08 K page_count: 4 document date: 2020-09-14

[\[pdf\]](#) User Manual Catalog

Electrified Solutions Hager Companies May 16 2025 — Use of manual power up complies with California Building Code OSHPD requirements Remote access control and REX input field adjustable for 1 15

Catalog 2024 v16 hagerco Files Main Sections |||

Electrified Solutions Hager Companies offers a range of electrified door hardware to help you meet ... ible Egress - Simultaneous 22 - Pair - Double Egress - Independent 23 - Single Operator Paired with **5100 Series** Mechanical Closer Product Group 84 - Low Energy Power Operator Application* A - Push S...

lang:en score:18 filesize: 29.25 M page_count: 68 document date: 2025-05-14

[\[pdf\]](#) Specifications Warranty Borchure

Brochure 5100 series brochure pdglocks product data |||

5100 SERIES Commercial Full Featured Closer Grade 1 pdqlocks.com Specifications
HANDING: OPERATION ... APPLICATION CLOSER SIZE 1 2 Regular / Top Jamb 3
4 5 6 1 2 Parallel Arm 3 4 5 6 Note: **5100 Series** Closer sizes may vary due to site
conditions. INTERIOR 30 34 38 48 54 60 -- 30 3...

lang:en score:17 filesize: 1.15 M page count: 6 document date: 2021-08-10

[\[pdf\]](#) Specifications Documentation Borchure

5100 Series Brochure PDQ Door Closers Documentation series brochure resources locksandsafes |||

5100 SERIES Commercial FullFeatured Closer Grade 1 5100 w/ Cover and Parallel Arm Option Spring Cu ... Multi-family Hospitality Offices Houses of Worship Retail
How to Order SERIES SIZE 51 **5100 Series** Door Closer 1 Adjustable Size 1-6
OPTIONS ACCESSORIES DS Door Saver Arm Blank SN...

lang:en score:17 filesize: 4.56 M page count: 6 document date: 2020-02-13



[\[pdf\]](#) Specifications Warranty Brochure

Brochure 5100 Series Heavy Duty 8475646 fs1 hubspotusercontent na1 net hubfs Website Content PDQ

Product Brochures Closers |||

5100 Series Commercial Full Feature Closer Grade 1 pdqlocks.com **5100 Series** Pivot Stop Arm Spring Cushion Stops The Pivot Stop Arm PS is designed to serve as a medium-duty door stop for situations where a door stop or overhead stop is not practical. PS uses backcheck to slow the door and a s...

lang:en **score:16** filesize: 2.04 M page_count: 6 document date: 2022-11-09

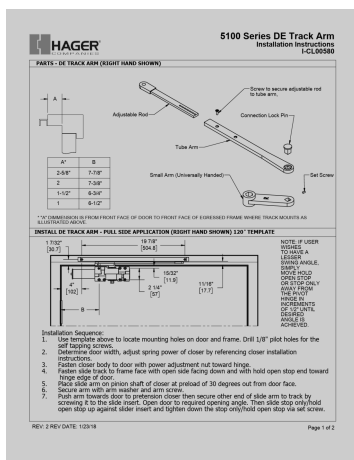


[\[pdf\]](#) Instructions Price List

PRICE LIST PDQ Locks of the defect will be required and further instructions Kwikset TA Restricted Limited to Grandmaster systems w 4 masters PriceList 2020 a pdqlocks 07 For More Information pdqsmartmobile smartsupport@pdqlocks pdqSMART Price Book LT2049 Wireless Networked Smart Locking Solutions |||

PRICE LIST EFFECTIVE AUGUST 3, 2020 Customer Support Customer Service Our Customer Service team i ... 191 pdqSMART-XLS Networked Access Control 9 7100 Series Grade 1 Closer 192 Mortise Locks 10 **5100 Series** Grade 1 Closer 198 MR Mortise Indicators 11 5300/5500 Series Grade 1 Closer 204 MR...

lang:en **score:16** filesize: 20.67 M page_count: 286 document date: 2020-07-07

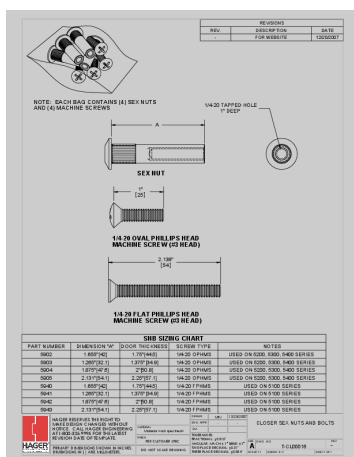


[\[pdf\]](#) Installation Guide Instructions

I CL00580 Rev 2 HAGERCO dbrick STLHQENGZ230DB Hager 5100 Series DE Index of 2023 02 Track Arm Installation trdoor |||

PARTS - DE TRACK ARM RIGHT HAND SHOWN A Adjustable Rod **5100 Series** DE Track Arm Installation Instructions I-CL00580 Screw to secure adjustable rod to tube arm, Connection Lock Pin Tube Arm A* 2-5/8 2 1-1/2 1 B 7-7/8 7-3/8 6-3/4 6-1/2 Small Arm Universally Handed Set Screw * A DIMM...

lang:en **score:15** filesize: 160.96 K page_count: 2 document date: 2018-01-25



[\[pdf\]](#) Dimension Guide

T CL00016 HAGERCO mjames STLMKTDX51MJ Hager Screws Bolts Template s3 absupply net amazonaws |||

REV. - REVISIONS DESCRIPTION FOR WEBSITE DATE 12/20/2007 NOTE: EACH BAG CONTAINS 4 SEX NUTS AND ... 1/4-20 OPHMS USED ON 5200, 5300, 5400 SERIES 5940 1.655 42 1.75 44.5 1/4-20 FPHMS USED ON **5100 SERIES** 5941 1.265 32.1 1.375 34.9 1/4-20 FPHMS USED ON **5100 SERIES** 5942 1.875 47.6 ...

lang:it **score:15** filesize: 153.95 K page_count: 1 document date: 2012-06-12



[pdf] Documentation Catalog

Hager 2016 Door Controls Catalog Documentation resources locksandsafes |||

Door Controls Hager Companies offers a comprehensive line of door control products designed and man ... Table of Contents General Information

..... 2 5100 Series

..... 5 How to Order

lang:en score:15 filesize: 1.88 M page_count: 48 document date: 2020-02-03



[pdf] Catalog

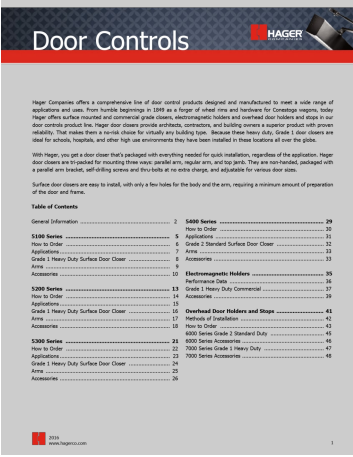
Door Controls Hager Catalog bigc products s3 amazonaws |||

Door Controls Hager Companies offers a comprehensive line of door control products designed and man ... Table of Contents General Information

..... 2 5100 Series

..... 5 How to Order

lang:en score:15 filesize: 2.08 M page_count: 48 document date: 2024-01-23



[pdf] Catalog

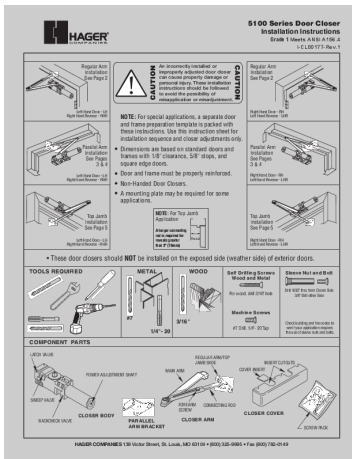
2016 hager catalog doorcontrols rev5 v149 hagerco Files |||

Door Controls Hager Companies offers a comprehensive line of door control products designed and man ... Table of Contents General Information

..... 2 5100 Series

..... 5 How to Order

lang:en score:15 filesize: 2.01 M page_count: 48 document date: 2024-01-15



[\[pdf\]](#) Instructions Dimension Guide

5100 p1 5 6 11 05 ai thensley hager 5100S16alms s3 absupply net amazonaws sku |||

5100 Series Door Closer Installation Instructions Grade 1 Meets ANSI A156.4 I-CL00177-Rev.1 Regular Arm Installation See Page 2 An incorrectly installed or improperly adjusted door closer can cause property damage or personal injury. These installation instructions should be followed to avoid the ...

lang:en **score:15** filesize: 829.77 K page_count: 6 document date: 2018-02-16

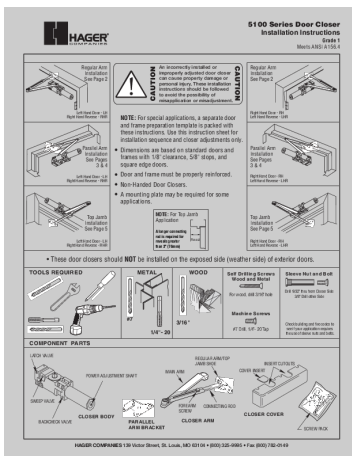


[\[pdf\]](#) Catalog

Major Manufacturing Product Catalog Tech Manuals MajorMfg Catalog29 Isamichigan org |||

SPECIALTY PRODUCTS FOR THE PROFESSIONAL LOCKSMITH ENDLESS POSSIBILITIES WITH QUALITY, RELIABLE EFF ...quires the optional HIT-BAK adapter. HIT-103N For Locknetics Computer Managed Cylindrical Lock CMC **5100 Series** The HIT-103N was specifically designed to install the Locknetics CMC **5100 Series** with p...

lang:en **score:15** filesize: 3.36 M page_count: 108 document date: 2010-05-25



[\[pdf\]](#) Instructions Specifications Dimension Guide

5100 p1 5 6 11 05 ai thensley hager instal s2 img b handlesets mediabase specifications 237625

5100 Series Door Closer Installation Instructions Grade 1 Meets ANSI A156.4 Regular Arm Installation See Page 2 An incorrectly installed or improperly adjusted door closer can cause property damage or personal injury. These installation instructions should be followed to avoid the possibility of m...

lang:en **score:15** filesize: 747.31 K page_count: 6 document date: 2005-11-03

Door Controls

HAGER

HYDRAULIC DOOR CLOSERS

HAGER

HYDRAULIC DOOR CLOSERS

Hager Companies offers a comprehensive line of door control products designed and manufactured to meet a wide range of applications and uses. From humble beginnings in 1989 as a forger of steel wire and hardware for Corningware, today Hager offers surface mounted and commercial grade closers, electromagnetic holders and overhead door holders and stops in our door control product line. Hager door closers provide smooth, controlled, and lasting service a superior product with proven reliability. That makes them a smart choice for virtually any building type. Because these heavy duty, Grade 1 door closers are ideal for schools, hospitals, and other high-use environments they have been installed in these locations all over the globe.

With Hager, you get a door closer that's packaged with everything needed for quick installation, regardless of the application. Hager door closers are packaged for mounting three ways: parallel arm, regular arm, and top arm. They are not finished, packaged with a parallel arm bracket, self-drilling screws and thru-bolts at no extra charge, and adjustable for various door sizes.

Surface door closers are easy to install, with only a few holes for the body and the arm, requiring a minimum amount of preparation of the door and frame.

Table of Contents

General Information	2	5400 Series	29
How to Order	5	Applications	31
Grade 1 Heavy Duty Surface Door Closer	7	Grade 1 Standard Surface Door Closer	31
Accessories	9	Arms	33
		Accessories	33
		Electromagnetic Holders	35
		Performance Data	39
		Grade 1 Heavy Duty Commercial	39
		Accessories	39
		Overhead Door Holders and Stops	41
		Methods of Installation	41
		How to Order	41
		5400 Series Grade 1 Standard Duty	45
		5400 Series Accessories	45
		7000 Series Grade 1 Heavy Duty	47
		7000 Series Accessories	47
		Accessories	49

800

www.hagerco.com

1

[pdf] Catalog

Door Controls Hager Companies Add 5900 bracket for parallel arm mount 5956 Extra Heavy Duty Hold
Open Cushion Stop Arm Non handed Forged steel Plunger hold open 2016 hager catalog doorcontrols
rev5 v147 hagerco Files |||

Door Controls Hager Companies offers a comprehensive line of door control products
designed and man ... Table of Contents General Information

2 5100 Series

5 How to Order

lang:en score:15 filesize: 2.02 M page_count: 48 document date: 2023-04-28

SPEC DATA

DOOR HARDWARE 08 71 00

HAGER

HYDRAULIC DOOR CLOSERS

HAGER

HYDRAULIC DOOR CLOSERS

1. Product Name

Hydraulic Door Closer

- 5100 Series
- 5200 Series
- 5300 Series
- 5400 Series

2. Manufacturer

Hager Companies

139 Victor St.

St. Louis, MO 63104

800 255-3590

314 772-4400

Fax: 800 782-0149

www.hagerco.com

3. Product Description

Hydraulic door closers are designed to provide smooth, controlled, and lasting service a superior product with proven reliability. That makes them a smart choice for virtually any building type. Because these heavy duty, Grade 1 door closers are ideal for schools, hospitals, and other high-use environments they have been installed in these locations all over the globe.

With Hager, you get a door closer that's packaged with everything needed for quick installation, regardless of the application. Hager door closers are packaged for mounting three ways: parallel arm, regular arm, and top arm. They are not finished, packaged with a parallel arm bracket, self-drilling screws and thru-bolts at no extra charge, and adjustable for various door sizes.

Surface door closers are easy to install, with only a few holes for the body and the arm, requiring a minimum amount of preparation of the door and frame.

Table of Contents

General Information	2	5400 Series	29
How to Order	5	Applications	31
Grade 1 Heavy Duty Surface Door Closer	7	Grade 1 Standard Surface Door Closer	31
Accessories	9	Arms	33
		Accessories	33
		Electromagnetic Holders	35
		Performance Data	39
		Grade 1 Heavy Duty Commercial	39
		Accessories	39
		Overhead Door Holders and Stops	41
		Methods of Installation	41
		How to Order	41
		5400 Series Grade 1 Standard Duty	45
		5400 Series Accessories	45
		7000 Series Grade 1 Heavy Duty	47
		7000 Series Accessories	47
		Accessories	49

800

www.hagerco.com

1

[pdf] Datasheet

Hager Companies Surface Door Closers SPEC DATA Reed First Source Hardware Locks DATA^a and
MANU SPEC^a are registered trademarks of Elsevier Inc The ten part format conforms to the editorial style
Data Sheet resources locksandsafes

DOOR HARDWARE 08 71 00 Hager Companies 1. Product Name Surface Door
Closers 5100 Series 5200 Series 5300 Series 5400 Series 2. Manufacturer Hager
Companies 139 Victor St. St. Louis, MO 63104 800 255-3590 314 772-4400 Fax: 800
782-0149 E-mail: webmaster hagerco.com www.hagerco.com 3. Pro...

lang:en score:15 filesize: 329.11 K page_count: 2 document date: 2008-08-19

Door Controls

HAGER

HYDRAULIC DOOR CLOSERS

HAGER

HYDRAULIC DOOR CLOSERS

Hager Companies offers a comprehensive line of door control products designed and manufactured to meet a wide range of applications and uses. From humble beginnings in 1989 as a forger of steel wire and hardware for Corningware, today Hager offers surface mounted and commercial grade closers, electromagnetic holders and overhead door holders and stops in our door control product line. Hager door closers provide smooth, controlled, and lasting service a superior product with proven reliability. That makes them a smart choice for virtually any building type. Because these heavy duty, Grade 1 door closers are ideal for schools, hospitals, and other high-use environments they have been installed in these locations all over the globe.

With Hager, you get a door closer that's packaged with everything needed for quick installation, regardless of the application. Hager door closers are packaged for mounting three ways: parallel arm, regular arm, and top arm. They are not finished, packaged with a parallel arm bracket, self-drilling screws and thru-bolts at no extra charge, and adjustable for various door sizes.

Surface door closers are easy to install, with only a few holes for the body and the arm, requiring a minimum amount of preparation of the door and frame.

Table of Contents

General Information	2	5400 Series	29
How to Order	5	Applications	31
Grade 1 Heavy Duty Surface Door Closer	7	Grade 1 Standard Surface Door Closer	31
Accessories	9	Arms	33
		Accessories	33
		Electromagnetic Holders	35
		Performance Data	39
		Grade 1 Heavy Duty Commercial	39
		Accessories	39
		Overhead Door Holders and Stops	41
		Methods of Installation	41
		How to Order	41
		5400 Series Grade 1 Standard Duty	45
		5400 Series Accessories	45
		7000 Series Grade 1 Heavy Duty	47
		7000 Series Accessories	47
		Accessories	49

800

www.hagerco.com

1

[pdf] Catalog

Catalog Hager Hydraulic Door Closer Back Check Function PA Bracket Regular Top Jamb Adjustable
Size 1 6 Plastic Cover Sprayed Aluminum Fire Rated Grade UHS Hardware 2016 hager catalog
doorcontrols rev5 v116 v 1654097932 cdn shopify s files 0052 5395 5651 |||

Door Controls Hager Companies offers a comprehensive line of door control products
designed and man ... Table of Contents General Information

2 5100 Series

5 How to Order

lang:en score:15 filesize: 2.12 M page_count: 48 document date: 2021-10-01



[pdf]

2018 Hager Price Book 2018pb complete rev1 v83 reduced dwi9Inoau63q cloudfront net hager pricebooks

door hardware PRICE BOOK #13 One Family. One Brand. One Vision.TM
www.hagerco.com Effective 4/1/20 115776 One Family. One Brand. One Vision.TM www.hagerco.com TABLE OF CONTENTS A Arms, **5100 Series** Main Arm Assembly..... 6 ...

lang:en score:14 filesize: 14.63 M page_count: 589 document date: 2020-10-23



[pdf]

2018 hager complete resources locksandsafes Hager Price Book Home 1 |||

door hardware PRICE BOOK #13 One Family. One Brand. One Vision.TM
www.hagerco.com Effective 4/1/20 115776 One Family. One Brand. One Vision.TM www.hagerco.com TABLE OF CONTENTS A Arms, **5100 Series** Main Arm Assembly..... 6 ...

lang:en score:13 filesize: 12.05 M page_count: 0 document date: 0000-00-00

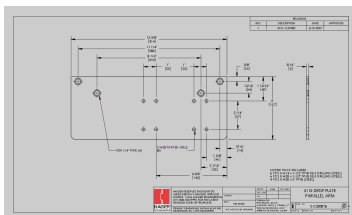


[pdf]

docs 2022 Hager Price Book jmacfiles s3 amazonaws |||

door hardware PRICE BOOK #16 Part # 5-500-2021 effective 05/01/2022 Address
Hager Companies 139 Vic ... nline ordering in the MyHager portal. 05/01/2022 88
www.hagerco.com TABLE OF CONTENTS A Arms, **5100 Series** Main Arm Assembly.....6 E...

lang:en score:13 filesize: 13.15 M page_count: 555 document date: 2022-05-02



[pdf] Dimension Guide

S CL00076 HAGERCO njansen STLMKTDX51NJ Hager 5110 TemplateHager Parallel Arm Mount Drop Plate for 5100 Series Door CloserHager Templateprod trudoor media s3 us west 2 amazonaws 2023 02 17132705 Template |||

12 3/8 314 11 1/4 286 8 1/4 210 1 1 25 25 REV. 1 REVISIONS DESCRIPTION DATE
ECO CL07002 4/11/2007 APPROVED 3/8 3/16 10 5 15/16 1 15/16 24 49 5 127 2 1/4
57 FOR 1/4 FPHS 4 1/4-20 TAPPED HOLE 8 5 5/8 143 1 5/8 41 2 1/16 52 9/16 14
SCREW PACK INCLUDES: 6 PC...

lang:i-klngon score:13 filesize: 50.94 K page_count: 1 document date: 2012-06-07

