

## GROHE 23310000

# GROHE Grandera Basin Faucet 23310000 User Manual

Model: 23310000 | Brand: GROHE

## 1. INTRODUCTION

This manual provides essential information for the safe and efficient installation, operation, and maintenance of your GROHE Grandera Basin Faucet, model 23310000. Please read these instructions carefully before beginning installation or use, and retain them for future reference. Proper installation and care will ensure optimal performance and longevity of your faucet.

## 2. PRODUCT OVERVIEW AND FEATURES

The GROHE Grandera Basin Faucet 23310000 is a premium single-handle faucet designed for bathroom basins, featuring a durable chrome finish. Its design combines aesthetic appeal with functional excellence.

### Key Features:

- **Smooth Body:** Designed for basins that do not require a pop-up waste or retractable chain.
- **Medium High Spout:** Provides excellent ease of use in the bathroom.
- **GROHE SilkMove Cartridge Technology:** Ensures smooth and precise handling of water flow and temperature.
- **GROHE StarLight Chrome Coating:** Offers an elegant, long-lasting chrome finish that is easy to clean and resistant to scratches and tarnishing.
- **GROHE EcoJoy:** Incorporates a water-saving function to reduce water consumption without compromising performance.
- **Variable Spout End:** Allows for adjustment of the water flow direction.
- **Easy Installation System:** Designed for straightforward installation with clear instructions.



Figure 1: The GROHE Grandera Basin Faucet 23310000, showcasing its chrome finish and elegant design.

### 3. SAFETY INFORMATION

---

Please observe the following safety precautions to prevent injury or damage to the product:

- Always turn off the main water supply before beginning any installation or maintenance work.
- Ensure all connections are properly sealed to prevent leaks.
- Do not overtighten connections, as this can damage the faucet or plumbing.
- If you are unsure about any part of the installation process, consult a qualified plumber.
- Keep small parts out of reach of children to prevent choking hazards.

## 4. PACKAGE CONTENTS

---

Verify that all components are present before beginning installation:

- 1-Piece Faucet (GROHE Grandera Basin Faucet 23310000)
- Installation hardware (washers, nuts, mounting bracket)
- Flexible connection hoses

## 5. INSTALLATION

---

The GROHE Grandera Basin Faucet is designed for single-hole, deck-mount installation. Follow these general steps for installation. Refer to the included technical drawing for specific dimensions and connection details.

### Installation Steps:

1. **Prepare the Installation Area:** Ensure the basin hole is clean and free of debris. Turn off the main water supply.
2. **Mount the Faucet:** Insert the faucet body through the mounting hole in the basin. Ensure any included gaskets or seals are correctly positioned between the faucet base and the basin surface.
3. **Secure the Faucet:** From underneath the basin, slide the rubber washer, metal washer, and mounting nut onto the threaded shank of the faucet. Tighten the mounting nut securely using the appropriate tool, ensuring the faucet is aligned correctly.
4. **Connect Water Supply Lines:** Attach the flexible hot and cold water supply lines to the corresponding inlets on the faucet body. Connect the other ends of the supply lines to your hot and cold water shut-off valves. Hand-tighten first, then use a wrench for a final quarter-turn, being careful not to overtighten.
5. **Check for Leaks:** Slowly turn on the main water supply. Inspect all connections for any signs of leaks. If leaks are detected, gently tighten the connections until they stop.
6. **Flush the Faucet:** Remove the aerator from the spout. Turn on both hot and cold water for a few minutes to flush out any debris from the lines. Turn off the water, reattach the aerator, and test the faucet.

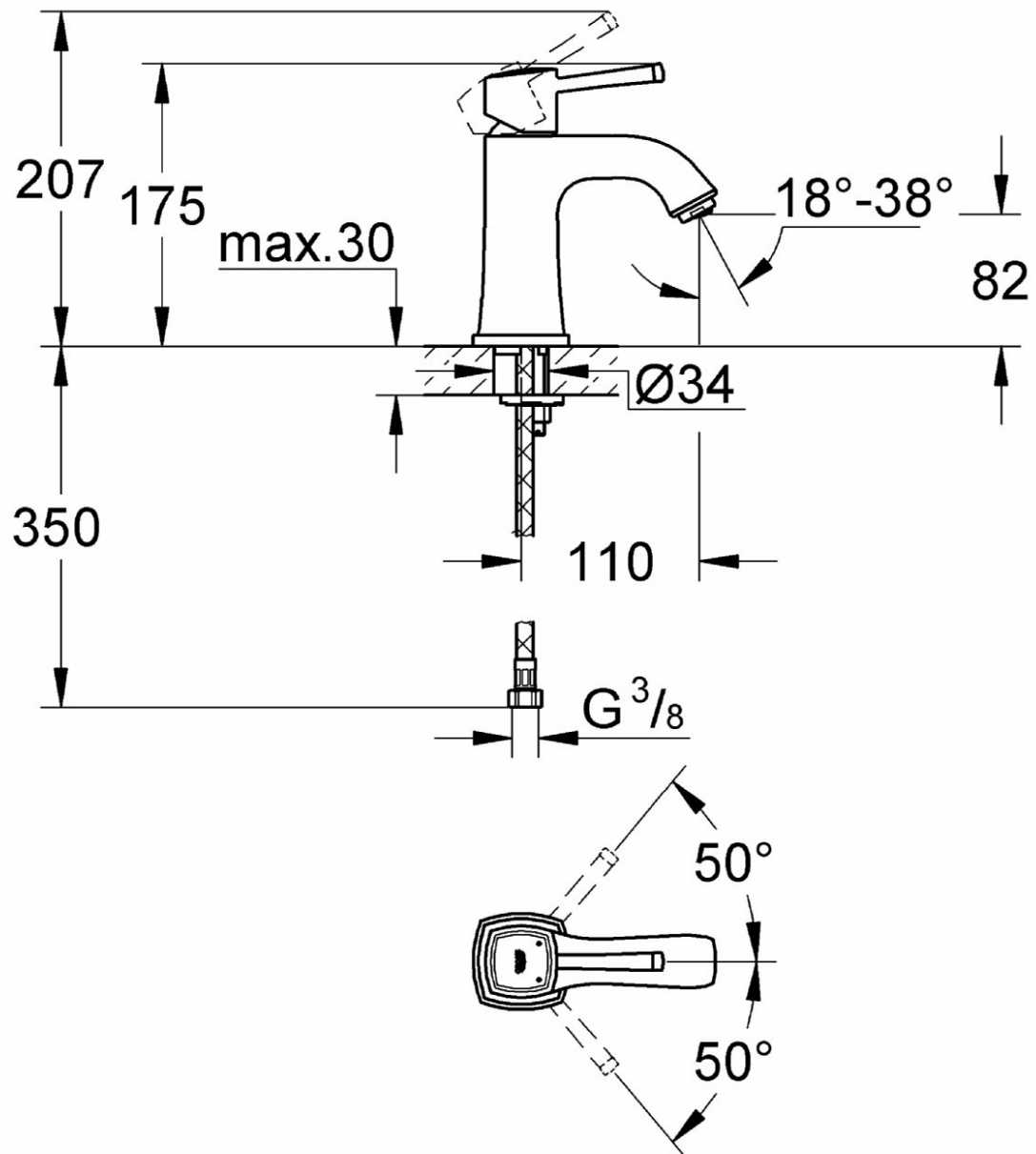


Figure 2: Technical drawing illustrating the dimensions and installation requirements for the faucet.



Figure 3: The GROHE Grandera Basin Faucet seamlessly integrated into a bathroom environment.

## 6. OPERATION

---

The GROHE Grandera Basin Faucet features a single lever handle for controlling both water flow and temperature.

- **Water Flow Control:** Lift the handle upwards to increase water flow. Push it downwards to decrease or shut off the flow.
- **Temperature Control:** Move the handle to the left for hot water and to the right for cold water. The GROHE SilkMove cartridge ensures smooth and precise temperature adjustments.
- **Spout Adjustment:** The variable spout end allows for minor adjustments to the water stream direction.



Figure 4: The faucet in operation, demonstrating water flow into a basin.

## 7. MAINTENANCE AND CLEANING

---

To maintain the pristine appearance and functionality of your GROHE Grandera Basin Faucet, follow these cleaning and maintenance guidelines:

- **Regular Cleaning:** Clean the faucet regularly with a soft cloth and mild soap or a non-abrasive cleaner specifically designed for chrome finishes.
- **Avoid Harsh Cleaners:** Do not use abrasive sponges, scouring pads, or cleaners containing alcohol, ammonia, bleach, or phosphoric acid, as these can damage the GROHE StarLight chrome coating.
- **Rinse and Dry:** After cleaning, always rinse the faucet thoroughly with clean water and dry it with a soft cloth to prevent water spots and maintain its shine.
- **Aerator Maintenance:** Periodically unscrew the aerator from the spout and clean any mineral deposits or debris that may have accumulated. This helps maintain optimal water flow.



Figure 5: Multiple GROHE Grandera Faucets in a bathroom setting, highlighting their consistent finish and design.

## 8. TROUBLESHOOTING

If you encounter issues with your faucet, refer to the following common troubleshooting steps:

Problem	Possible Cause	Solution
Low Water Flow	Clogged aerator; partially closed shut-off valve; debris in supply lines.	Clean or replace aerator; fully open shut-off valves; flush supply lines.
Leaking from Spout	Worn cartridge; debris in cartridge.	Replace cartridge; clean cartridge.
Leaking at Base	Loose mounting nut; improper seal.	Tighten mounting nut; check and reseal base gasket.
Inconsistent Water Temperature	Faulty cartridge; issues with water heater.	Replace cartridge; consult water heater manual or professional.

If these steps do not resolve the issue, please contact GROHE customer support or a qualified plumber.

## 9. SPECIFICATIONS

Specification	Detail
Brand	GROHE
Model Name	Grandera Basin

Specification	Detail
Item Model Number	23310000
Recommended Uses	Bathroom
Mounting Type	Deck Mount
Installation Type	Single Hole
Finish Type	Chrome
Material	Other (High-quality brass with chrome plating)
Colour	Chrome Finish
Number of Handles	1
Special Features	Easy to Clean, Water Saving (GROHE EcoJoy), Smooth Handling (GROHE SilkMove)
Item Weight	1.36 kg (1 kg 360 g)
Product Dimensions (LxWxH)	56 x 22.6 x 6.6 cm
Included Components	1-Piece Faucet

## 10. WARRANTY AND SUPPORT

---

Your GROHE Grandera Basin Faucet 23310000 comes with a **10-Year Warranty**, covering manufacturing defects and material flaws under normal use and service. Please retain your proof of purchase for warranty claims. For technical assistance, warranty service, or to purchase replacement parts, please contact GROHE customer support through their official website or the contact information provided with your purchase documentation. When contacting support, please have your model number (23310000) and date of purchase readily available.