

## FRANKE FRAGMENTA 112.0277.144

# Franke Fragmenta Overflow Kit Instruction Manual

MODEL: FRAGMENTA 112.0277.144

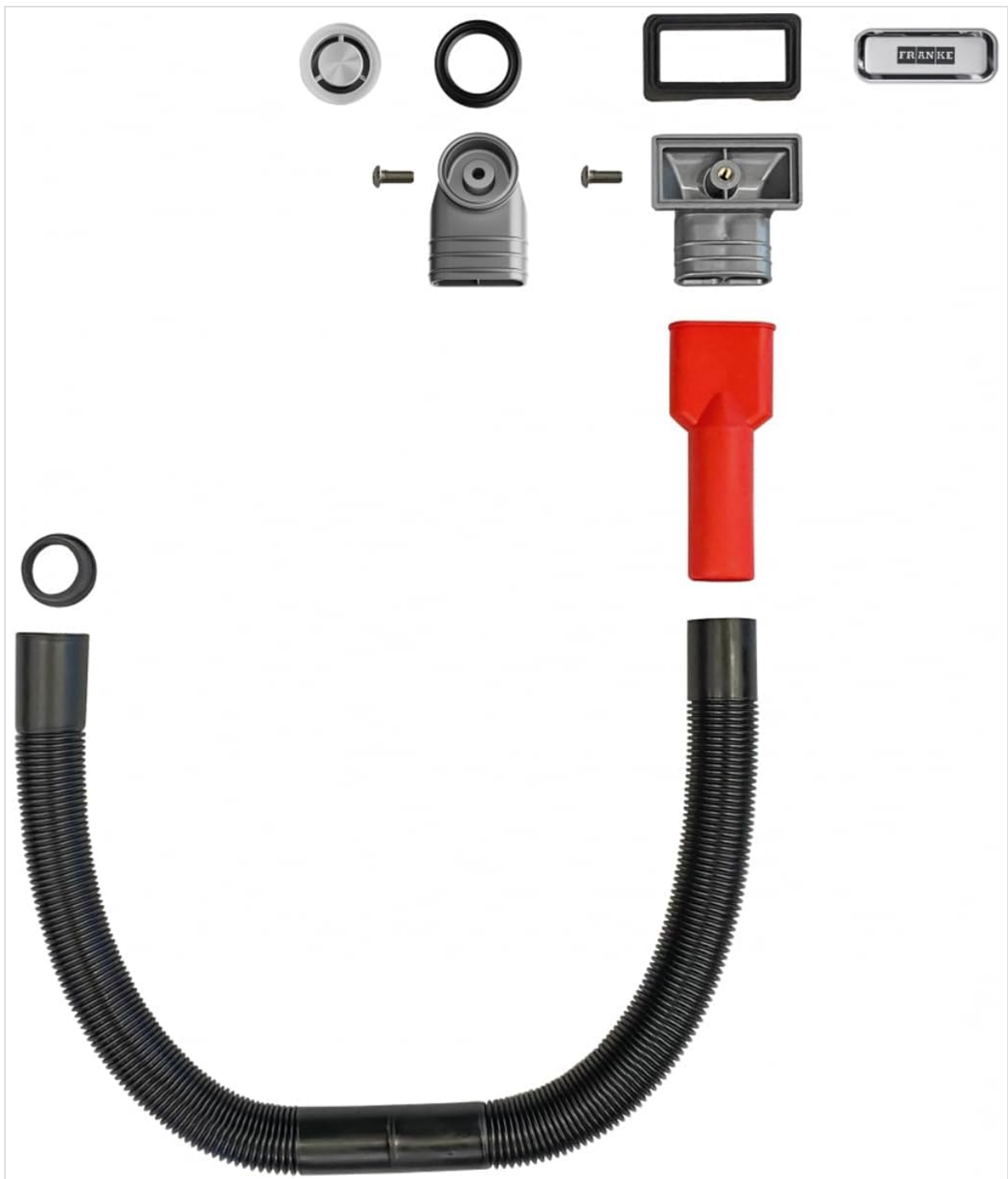
## Introduction

This manual provides detailed instructions for the installation, operation, and maintenance of the Franke Fragmenta Overflow Kit, model FRAGMENTA 112.0277.144. Please read these instructions carefully before beginning installation to ensure proper function and longevity of the product. Retain this manual for future reference.

## Product Components

The Franke Fragmenta Overflow Kit includes the following main components:

- Flexible overflow hose
- Overflow connection body (red)
- Chrome-finished overflow cover with Franke logo
- Gaskets and fasteners for secure installation



**Figure 1:** Exploded view illustrating all individual components of the Franke Fragmenta Overflow Kit, including gaskets, screws, the flexible hose, the overflow body, and the decorative cover, laid out for assembly.

## Setup and Installation

Before installation, ensure all components are present and undamaged. You will need basic plumbing tools such as a screwdriver and possibly a wrench.

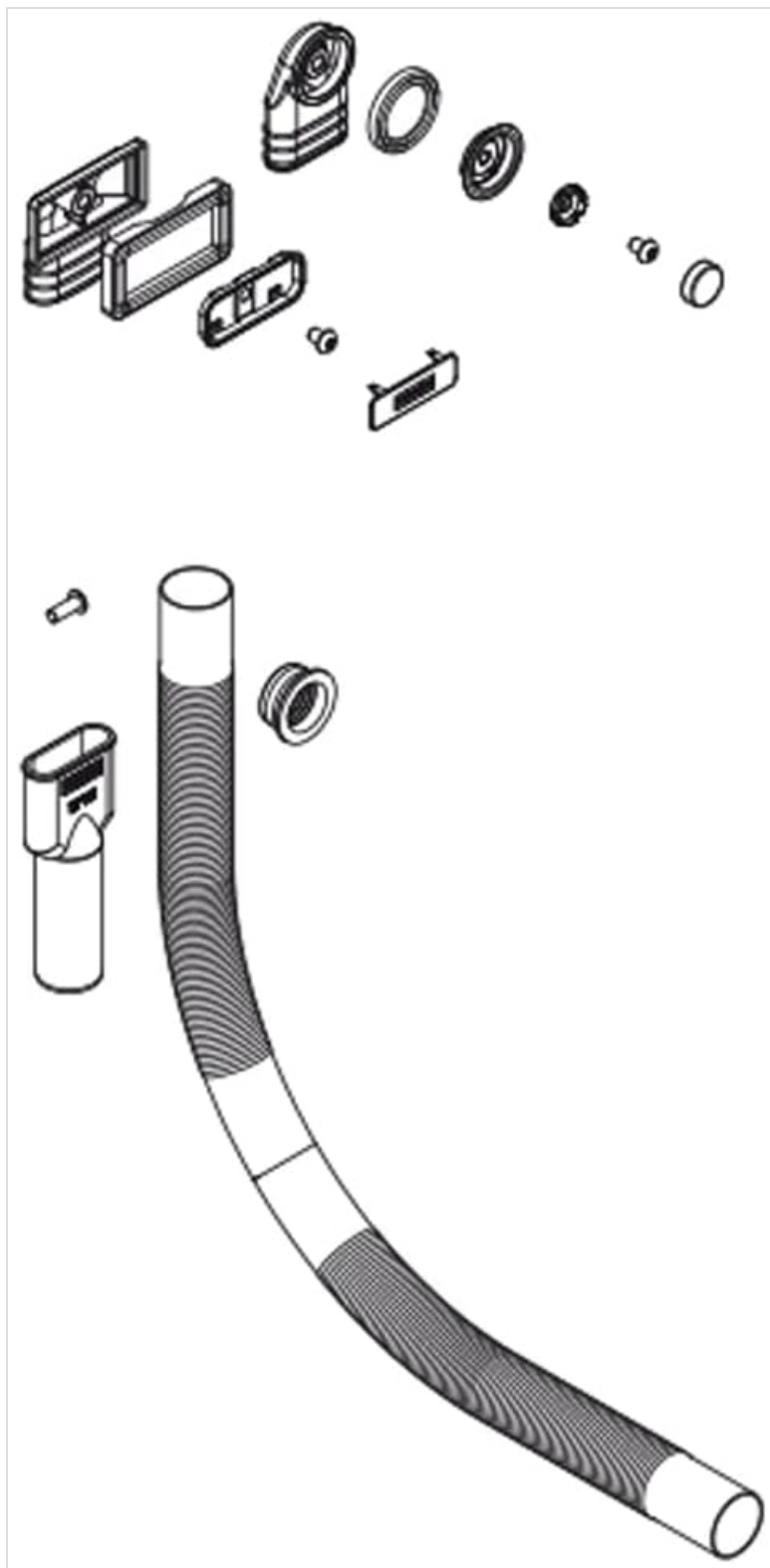
1. **Prepare the Sink:** Ensure the sink's overflow opening is clean and free of debris.
2. **Attach Overflow Cover:** From the inside of the sink, position the chrome-finished overflow cover over the overflow opening.
3. **Connect Overflow Body:** From underneath the sink, align the overflow connection body (red part) with the overflow opening and the back of the chrome cover. Secure it using the provided screws and gaskets, ensuring a watertight seal. Do not overtighten.
4. **Attach Flexible Hose:** Connect one end of the flexible overflow hose to the outlet of the overflow

connection body. Ensure it is securely fastened, typically with a compression fitting or clamp if provided.

5. **Route Hose to Drain:** Route the flexible hose to connect to the main sink drain pipe, typically above the P-trap. Ensure the hose has a gentle slope to allow water to drain effectively and avoid kinks.
6. **Test for Leaks:** Fill the sink with water and allow it to reach the overflow level. Observe carefully for any leaks around the overflow cover, the connection body, and where the hose connects to the drain. Tighten connections slightly if leaks are detected.



**Figure 2:** The fully assembled Franke Fragmenta Overflow Kit, showing the flexible hose, the red connection piece, and the chrome-finished overflow cover with the Franke logo, as it would appear after installation.



**Figure 3:** A technical line drawing of the Franke Fragmenta Overflow Kit, detailing the connection points and overall structure, useful for understanding installation and dimensions.

## Operation

The Franke Fragmenta Overflow Kit is designed to prevent the sink from overflowing by diverting excess water into the drain system. It operates passively when the water level in the sink rises above the overflow opening. No manual operation is required.

## Maintenance

Regular maintenance ensures the proper function and hygiene of your overflow kit.

- **Cleaning the Overflow Cover:** Periodically clean the chrome overflow cover with a soft cloth and mild soap to remove water spots and grime. Avoid abrasive cleaners.
- **Checking for Blockages:** If you notice slow drainage through the overflow, it may be partially blocked. You can attempt to clear minor blockages by flushing water through the overflow opening or using a small, flexible brush.
- **Inspecting for Leaks:** Regularly check the connections under the sink for any signs of water leakage. Address any leaks promptly to prevent water damage.

### Troubleshooting

Problem	Possible Cause	Solution
Water leaking from overflow connections	Loose connections or damaged gaskets.	Gently tighten connection screws. Inspect gaskets for damage and replace if necessary.
Overflow drains slowly or not at all	Blockage in the overflow hose or connection.	Clear any visible debris from the overflow opening. Use a flexible brush or flush with water to clear the hose.
Overflow cover is loose	Mounting screws are loose.	Tighten the mounting screws from underneath the sink.

### Specifications

**Brand:** FRANKE  
**Model Number:** 112.0277.144  
**Product Name:** Fragmenta Overflow Kit  
**Dimensions (L x W x H):** 30 x 8 x 8 cm  
**Item Weight:** 600 g  
**ASIN:** B00EXSF2TO

### Warranty and Support

Specific warranty details for the Franke Fragmenta Overflow Kit are not provided within this manual. For warranty information, technical support, or to purchase replacement parts, please contact Franke customer service directly or visit the official Franke website. Keep your purchase receipt as proof of purchase. For further assistance, please refer to the manufacturer's official resources:

- **Manufacturer:** Franke
- **Website:** [www.franke.com](http://www.franke.com) (Please note: This is a generic link and may not lead directly to product support for your region. Search for your local Franke website.)