



[Manuals.plus](#) /

› [Winston](#) /

› Winston Hinge Kit Cvap PS2116 Instruction Manual

Winston PS2116

Winston Hinge Kit Cvap PS2116 Instruction Manual

Genuine OEM Replacement Part

1. INTRODUCTION

This manual provides essential information for the proper installation, maintenance, and understanding of the Winston Hinge Kit Cvap PS2116. This is a genuine OEM (Original Equipment Manufacturer) replacement part designed for Cvap foodservice equipment. Using genuine OEM parts ensures compatibility, reliability, and helps maintain the safety and performance of your equipment.

Please read these instructions thoroughly before proceeding with installation or maintenance.

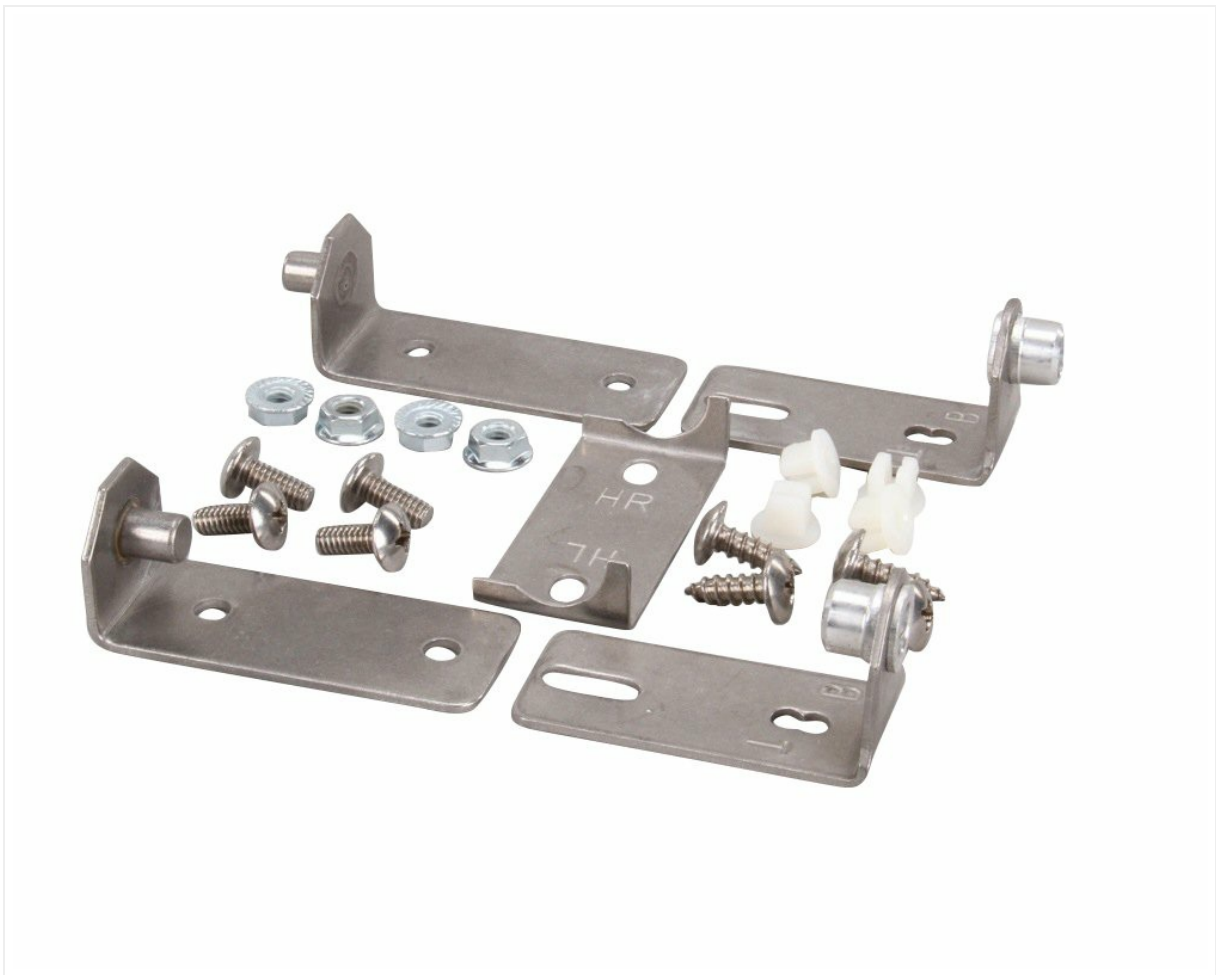


Image 1: Winston Hinge Kit Cvap PS2116. This image shows the complete hinge kit, typically including hinge components and possibly fasteners, ready for installation on Cvap equipment.

2. SAFETY INFORMATION

- Always disconnect power to the Cvap equipment before attempting any installation or maintenance.
- Wear appropriate personal protective equipment (PPE), such as gloves and eye protection, during installation.
- If you are unsure about any step, consult a qualified service technician or refer to the main Cvap equipment service manual.
- Ensure all fasteners are securely tightened after installation to prevent accidental detachment or malfunction.

3. SETUP AND INSTALLATION

The Winston Hinge Kit Cvap PS2116 is designed for door mount applications on compatible Cvap equipment. Installation typically involves replacing an existing hinge assembly.

3.1 Required Tools

- Screwdriver set (Phillips and/or flathead, depending on existing fasteners)
- Wrench set (if bolts are used)
- Pry tool (optional, for removing old hinge components)

3.2 Installation Steps (General Guidelines)

1. **Prepare Equipment:** Ensure the Cvap unit is powered off and disconnected from its power source. Secure

the door in an open position or remove it if necessary, following the Cvap equipment's specific instructions.

2. **Remove Old Hinge:** Carefully unfasten and remove the existing hinge assembly from the Cvap equipment door and frame. Note the orientation and placement of all components.
3. **Position New Hinge:** Align the new Winston Hinge Kit Cvap PS2116 with the mounting points on the Cvap equipment door and frame. Ensure correct orientation.
4. **Secure Hinge:** Attach the new hinge using the appropriate fasteners. Tighten all screws or bolts securely, but do not overtighten, which could strip threads or damage components.
5. **Test Operation:** Reattach the door if it was removed. Slowly open and close the door several times to ensure smooth operation and proper alignment. Adjust as needed.
6. **Final Check:** Verify that the door closes completely and seals correctly. Reconnect power to the Cvap unit.

Note: These are general guidelines. Always refer to the specific service manual for your Cvap equipment model for detailed, step-by-step installation instructions.

4. OPERATING PRINCIPLES

The Winston Hinge Kit Cvap PS2116 facilitates the smooth and secure opening and closing of the Cvap equipment door. Once properly installed, the hinge allows for controlled movement and maintains the door's position, contributing to the equipment's thermal efficiency and operational safety.

Regular inspection ensures continued optimal performance.

5. MAINTENANCE

Proper maintenance extends the lifespan of your hinge kit and ensures continued reliable operation of your Cvap equipment.

- **Cleaning:** Periodically wipe down the hinge surfaces with a damp cloth and mild detergent. Avoid abrasive cleaners or solvents that could damage the metal finish.
- **Inspection:** Regularly inspect the hinge for any signs of wear, corrosion, loose fasteners, or damage. Check for smooth movement without excessive play.
- **Lubrication:** If the hinge mechanism appears stiff or squeaks, a small amount of food-grade lubricant (if approved for your Cvap equipment) can be applied to the pivot points. Consult your Cvap equipment manual for specific lubrication recommendations.
- **Tightening:** Re-tighten any loose fasteners as needed to ensure the hinge remains securely mounted.

6. TROUBLESHOOTING

This section addresses common issues you might encounter with the hinge kit.

Problem	Possible Cause	Solution
Door does not close properly or is misaligned.	Loose fasteners, bent hinge component, improper installation.	Check and tighten all mounting screws. Inspect hinge for damage. Re-align door if necessary, following Cvap equipment manual.
Hinge squeaks or operates stiffly.	Lack of lubrication, dirt/debris in hinge mechanism.	Clean hinge and apply food-grade lubricant to pivot points (if applicable).

Problem	Possible Cause	Solution
Hinge appears damaged or broken.	Physical impact, excessive wear.	The hinge kit may require replacement. Contact support for genuine replacement parts.

If troubleshooting steps do not resolve the issue, contact Winston customer support or a qualified service technician.

7. SPECIFICATIONS

Model Number: PS2116

Brand: Winston

Part Type: Hinge Kit

Material: Metal

Finish Type: Unfinished

Mounting Type: Door Mount

Unit Count: 1.0 Count

Item Weight: 4.8 ounces

UPC: 212451035948

ASIN: B00EN9UP6S

8. WARRANTY INFORMATION

This Winston Hinge Kit Cvap PS2116 is a genuine OEM replacement part. Using genuine OEM parts is crucial for maintaining the warranty of your primary Cvap foodservice equipment. Non-OEM parts may void your equipment's warranty and could compromise safety and performance.

For specific warranty details regarding the Cvap equipment this hinge is installed on, please refer to the original equipment's warranty documentation or contact Winston customer service.

9. CUSTOMER SUPPORT

If you have any questions regarding the Winston Hinge Kit Cvap PS2116, its installation, or require further assistance, please contact:

Winston Customer Service: Refer to the contact information provided with your Cvap equipment or visit the official Winston website.

Seller Support: For purchase-related inquiries, you may contact "Commercial Kitchen Direct" through the platform where the item was purchased.

When contacting support, please have your product model number (PS2116) and any relevant purchase details available.

