

## Hubbell 8460A

# Hubbell 8460A 60A 250-Volt Single Receptacle Instruction Manual

Model: **8460A** | Brand: **Hubbell**

## 1. INTRODUCTION

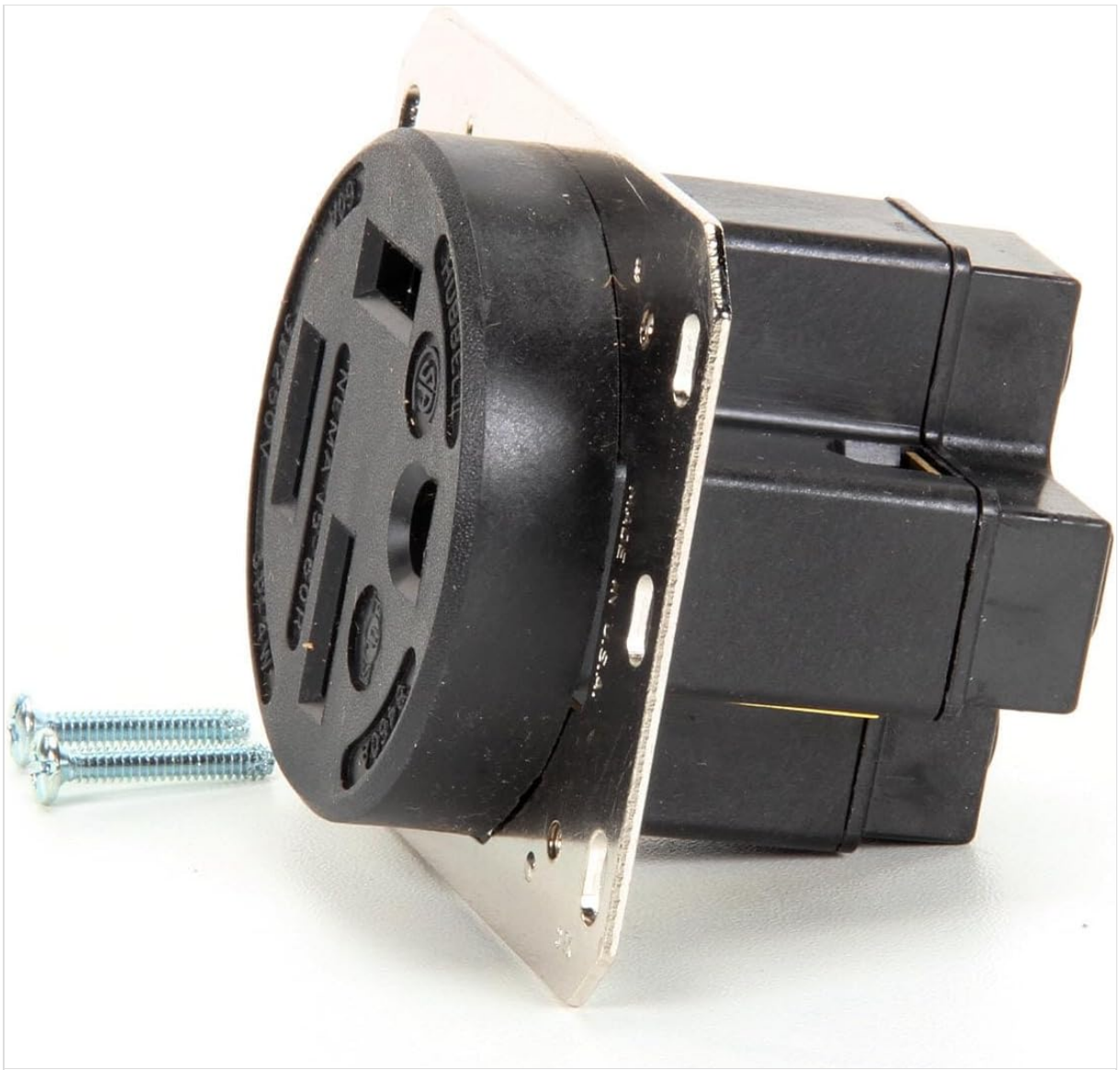
This manual provides essential instructions for the safe and proper installation, operation, and maintenance of the Hubbell 8460A 60A 250-Volt Single Receptacle. This genuine OEM replacement part is designed for high-quality performance in various applications requiring a 60 Amp, 250 Volt connection. Please read all instructions carefully before proceeding with installation or use.

### Safety Warning:

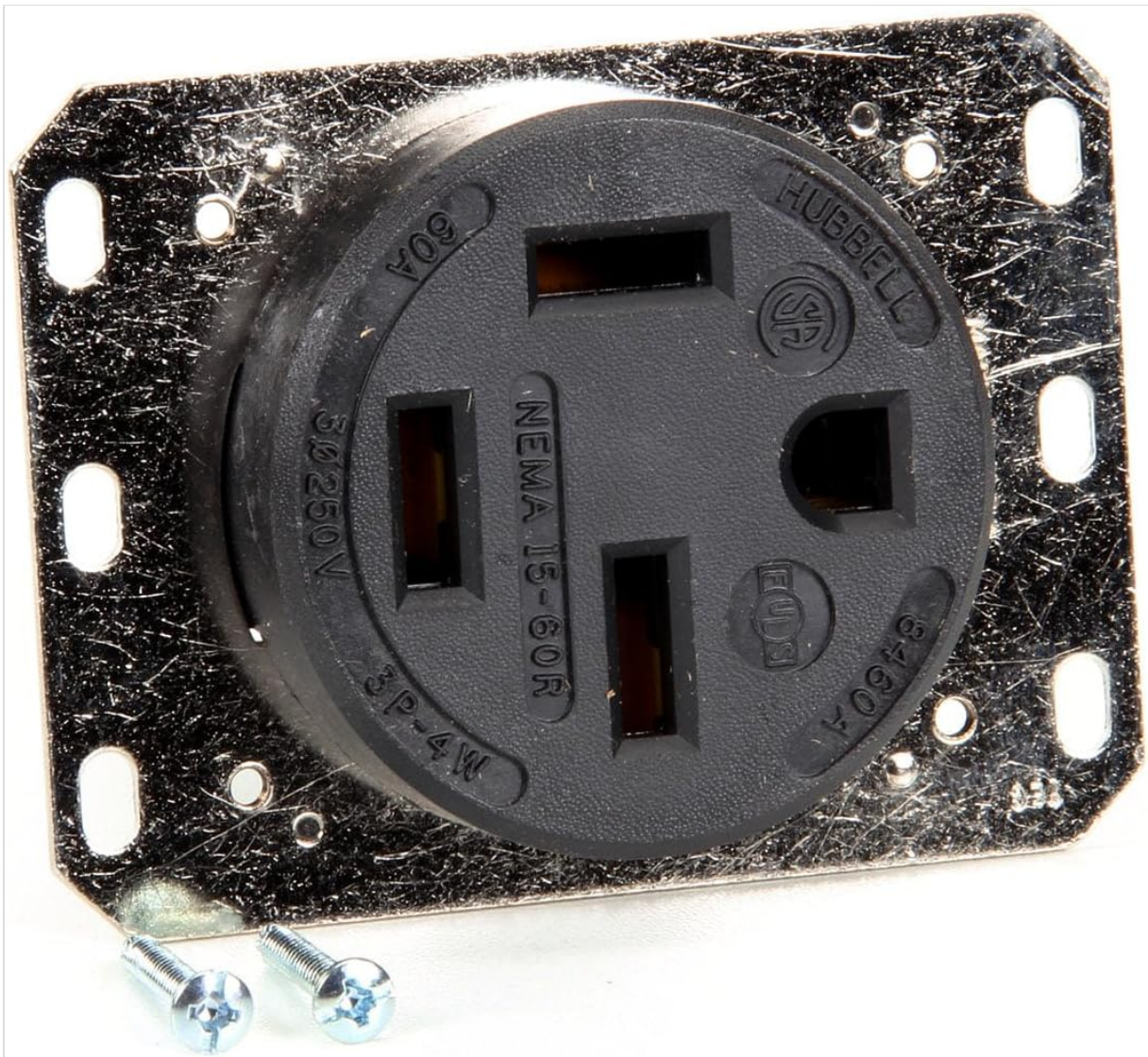
- Installation must be performed by a qualified electrician in accordance with all national and local electrical codes.
- Always disconnect power at the circuit breaker or fuse box before installing or servicing this device.
- Failure to follow these instructions may result in electric shock, fire, serious injury, or death.

## 2. PRODUCT OVERVIEW

The Hubbell 8460A is a durable single receptacle designed for demanding electrical applications. It features a robust construction to ensure reliable power delivery.



**Figure 1:** Angled front view of the Hubbell 8460A receptacle, showing the faceplate and NEMA 15-60R configuration. Two mounting screws are visible beside it.



**Figure 2:** Straight-on front view of the Hubbell 8460A receptacle, clearly displaying the NEMA 15-60R configuration and Hubbell branding. Two mounting screws are shown below the receptacle.

### 3. SETUP AND INSTALLATION

Proper installation is crucial for the safe and efficient operation of the Hubbell 8460A receptacle. Ensure all local and national electrical codes are strictly followed.

#### 3.1 Tools and Materials Required:

- Screwdrivers (Phillips and flat-head)
- Wire strippers
- Voltage tester
- Electrical tape
- Appropriate electrical box (gang box)
- Conduit and fittings (if applicable)

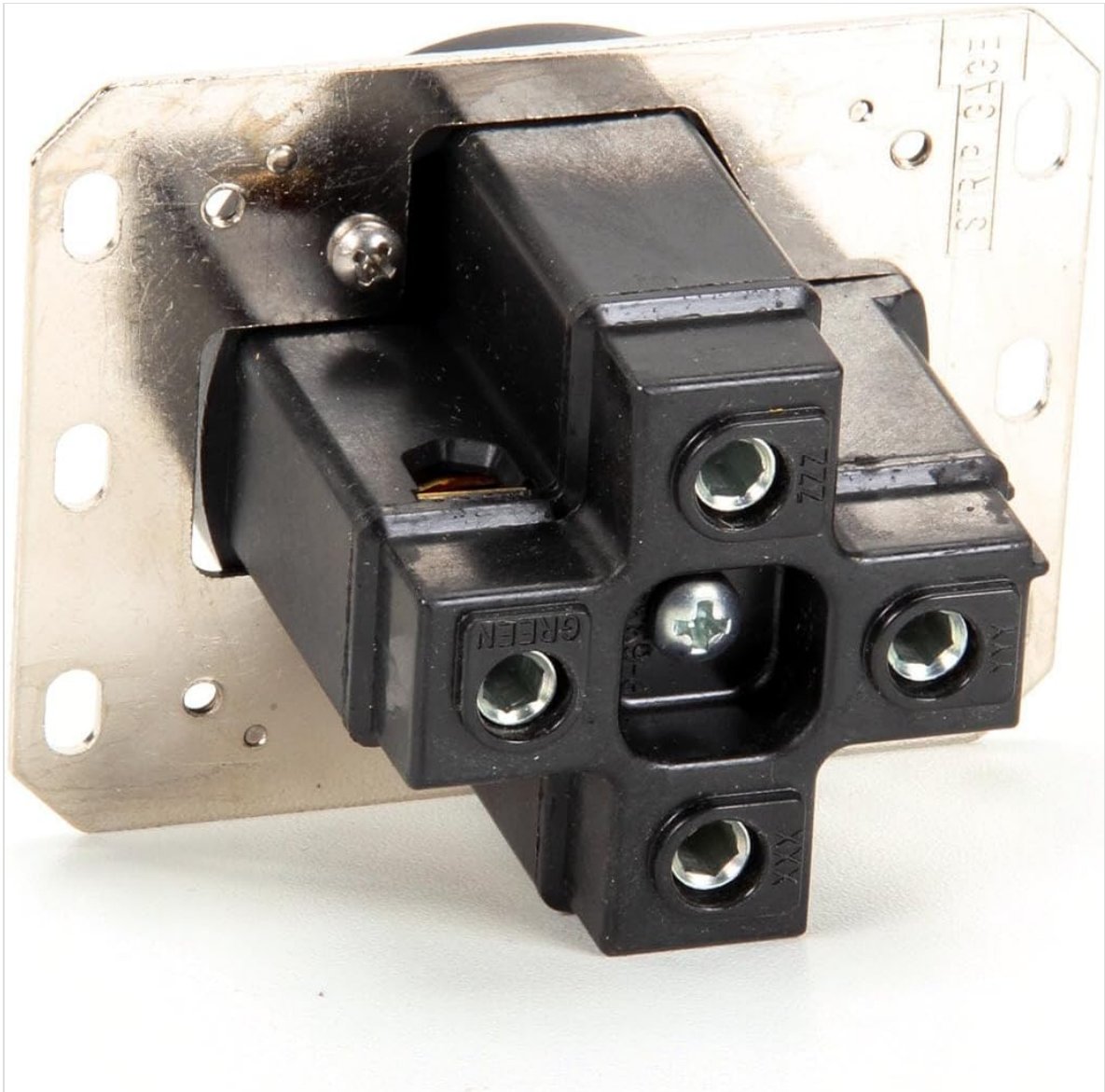
#### 3.2 Wiring Instructions:

1. **Disconnect Power:** Locate the circuit breaker or fuse controlling the circuit where the receptacle will be installed. Turn off the power completely and verify with a voltage tester that the power is off.
2. **Prepare Wires:** Strip approximately 1/2 inch (12-15mm) of insulation from the ends of the electrical



wires (Line 1, Line 2, and Ground). Ensure the wire gauge is appropriate for 60A service (e.g., 6 AWG copper wire).

### 3. Connect Wires:



**Figure 3:** Rear view of the Hubbell 8460A receptacle, illustrating the screw terminals for wiring connections. The 'GREEN' terminal for ground is clearly marked.

- Connect the **ground wire** (typically green or bare copper) to the green screw terminal on the receptacle.
  - Connect the **Line 1 wire** (typically black or red) to one of the brass screw terminals.
  - Connect the **Line 2 wire** (typically black or red) to the other brass screw terminal.
  - Ensure all connections are tight and secure. Do not overtighten.
4. **Mount Receptacle:** Carefully fold the wires into the electrical box. Align the receptacle with the mounting holes in the electrical box and secure it with the provided screws.
5. **Restore Power:** Once the receptacle is securely mounted and all connections are verified, restore power at the circuit breaker.
6. **Test:** Use a voltage tester to confirm proper voltage at the receptacle.



**Figure 4:** Side view of the Hubbell 8460A receptacle, revealing the robust internal contact design for secure and reliable electrical connections.

## 4. OPERATING INSTRUCTIONS

The Hubbell 8460A receptacle is designed for straightforward operation once correctly installed.

1. Ensure the appliance or equipment to be connected is compatible with a 60A, 250V NEMA 15-60P plug.
2. Align the plug with the receptacle openings and insert firmly.
3. To disconnect, grasp the plug body and pull it straight out from the receptacle. Do not pull by the cord.

## 5. MAINTENANCE

Regular inspection and basic maintenance will ensure the longevity and safe operation of your Hubbell 8460A receptacle.

- **Periodic Inspection:** Annually inspect the receptacle for any signs of damage, discoloration, loose connections, or excessive heat.
- **Cleaning:** Disconnect power before cleaning. Use a dry, soft cloth to wipe the surface of the receptacle. Do not use liquid cleaners or solvents.
- **Tighten Connections:** If accessible and with power disconnected, periodically check and tighten terminal screws to ensure secure electrical contact.

## 6. TROUBLESHOOTING

If you encounter issues with your Hubbell 8460A receptacle, refer to the following troubleshooting guide. Always disconnect power before inspecting or attempting repairs.

Problem	Possible Cause	Solution
No power at receptacle	<ul style="list-style-type: none"><li>• Tripped circuit breaker or blown fuse</li><li>• Loose wiring connection</li><li>• Faulty receptacle</li></ul>	<ul style="list-style-type: none"><li>• Check and reset circuit breaker or replace fuse.</li><li>• With power off, inspect and tighten all wiring connections.</li><li>• If other solutions fail, replace the receptacle.</li></ul>
Receptacle feels warm	<ul style="list-style-type: none"><li>• Overloaded circuit</li><li>• Loose connection</li><li>• Damaged receptacle</li></ul>	<ul style="list-style-type: none"><li>• Reduce load on the circuit.</li><li>• With power off, inspect and tighten all wiring connections.</li><li>• Replace the receptacle immediately.</li></ul>

If troubleshooting steps do not resolve the issue, contact a qualified electrician.

## 7. SPECIFICATIONS




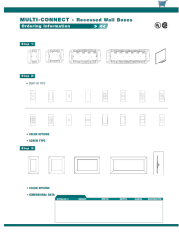

Feature	Detail
Brand	Hubbell
Model Number	8460A
Amperage	60 Amps
Voltage	250 Volts
NEMA Configuration	15-60R
Item Weight	11.2 ounces
Product Dimensions	4 x 4 x 6 inches
Compatible Devices	All (compatible 15-60P plugs)
Part Number	8460A
UPC	094701266094

## 8. WARRANTY AND SUPPORT

Hubbell products are manufactured to high standards. For specific warranty information or technical support, please refer to the official Hubbell website or contact their customer service department. Always use genuine OEM parts for safety, reliability, and performance.

For further assistance, visit the [Hubbell Store on Amazon](#).

## Related Documents - 8460A

 <p>Trinetics® UltraVac® Solid Dielectric Motor Operated Vacuum Switches</p>	<p><a href="#">Trinetics UltraVac Solid Dielectric Motor Operated Vacuum Switches: Installation and Operation Instructions</a></p> <p>Comprehensive installation and operation guide for Trinetics UltraVac Solid Dielectric Motor Operated Vacuum Switches by Hubbell. Covers product specifications, dimensions, electrical connections, safety warnings, handling, and maintenance.</p>
 <p>IWS-ZP-3P Occupancy Sensor</p>	<p><a href="#">IWS-ZP-3P Occupancy Sensor Installation and Adjustment Guide</a></p> <p>Comprehensive installation and adjustment guide for the Hubbell IWS-ZP-3P occupancy sensor, detailing wiring, timing, sensitivity, and photocell settings for optimal performance.</p>
 <p>TYPE AVR ALUMINUM VERTICAL BREAK SWITCH</p>	<p><a href="#">Hubbell Type AVR Aluminum Vertical Break Switch Specifications</a></p> <p>Detailed specifications and configurations for the Hubbell Type AVR Aluminum Vertical Break Switch, including product information, features, accessories, load break devices, and numbering sequence.</p>
 <p>HUBBELL OPERATING AND MAINTENANCE MANUAL OMNI PBX</p>	<p><a href="#">Hubbell OMNI PBX Heat Pump Water Heater Operating and Maintenance Manual</a></p> <p>Comprehensive operating and maintenance manual for the Hubbell OMNI PBX heat pump water heater, covering installation, operation, troubleshooting, and warranty information.</p>
 <p>MULTI-CONNECT - Recessed Wall Boxes</p>	<p><a href="#">Hubbell MULTI-CONNECT Recessed Wall Boxes - Ordering Guide</a></p> <p>A guide to ordering Hubbell MULTI-CONNECT recessed wall boxes, including selection of wall boxes, modular faceplates (snap-in and screw-type), and wall flanges. Details color options, dimensions, and available gang configurations.</p>
 <p>THE ENGINEERED ENCLOSURE</p>	<p><a href="#">Hot Box Enclosures: Engineered Solutions for Outdoor Infrastructure</a></p> <p>Explore the comprehensive range of Hot Box® enclosures, designed for optimal protection and easy maintenance of backflow prevention, pump, and sprinkler assemblies. Discover aluminum, fiberglass, and HDPE options, engineered to meet ASSE 1060 standards and various environmental challenges.</p>