

Kenmore 3352293

Kenmore Washer Washing Machine Direct Drive Drain Pump 3352293 Instruction Manual

Brand: Kenmore | Model: 3352293

1. INTRODUCTION

This manual provides essential information for the installation, operation, maintenance, and troubleshooting of your Kenmore 3352293 Direct Drive Drain Pump. This component is designed to effectively remove water from your washing machine during the drainage cycle.

The 3352293 drain pump is a direct drive unit, meaning it operates without belts, ensuring efficient water removal from the washing machine.

2. SAFETY INFORMATION

- Always disconnect the washing machine from the power supply before attempting any repairs or maintenance.
- Turn off the water supply to the washing machine before beginning any work.
- Wear appropriate personal protective equipment, such as gloves and safety glasses.
- Ensure the work area is dry and well-lit.
- If you are unsure about any step, consult a qualified technician.

3. PRODUCT OVERVIEW

The Kenmore 3352293 drain pump is a crucial component for your washing machine's drainage system. It is designed for direct drive washing machines.

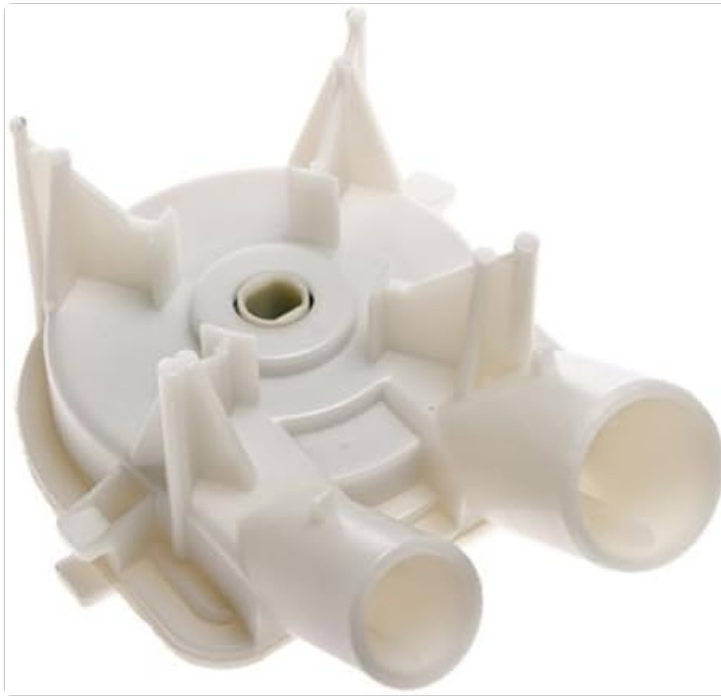


Image: Kenmore 3352293 Direct Drive Drain Pump. This image shows the white plastic drain pump with two hose connections and mounting tabs.

Dimensions

The drain pump has the following approximate dimensions:

- Product Dimensions: 6 x 6 x 6 inches
- Item Weight: 9 ounces

Your browser does not support the video tag.

Video: This video provides a 360-degree view of the 3363394 Washer Drain Pump, highlighting its design and dimensions.

4. INSTALLATION/SETUP

Replacing the drain pump requires careful attention. Follow these steps to ensure proper installation.

Preparation

1. Disconnect the washing machine from the electrical outlet.
2. Turn off the hot and cold water supply valves to the washing machine.
3. Disconnect the water inlet hoses and the drain hose from the machine.
4. Move the washing machine to an area where you have enough space to work.
5. You may need to tilt the washer back or lay it on its front to access the pump from underneath. Use a sturdy object to support the washer securely.

Step-by-Step Installation

Your browser does not support the video tag.

Video: This video demonstrates the process of replacing a washer water drain pump, including removal and installation steps.

Your browser does not support the video tag.

Video: This video illustrates the replacement of a 3363394 washing machine drain pump, showing the component from various angles and its integration.

Your browser does not support the video tag.

Video: This video demonstrates the installation process for the 3363394 Washer Drain Pump, applicable to Kenmore and

Your browser does not support the video tag.

Video: This video shows the replacement of a 3363394 Washing Machine Pump, detailing the steps for removal and new pump installation.

6. Locate the drain pump, typically found at the bottom of the washing machine.
7. Disconnect the electrical wiring from the old pump.
8. Remove the hoses connected to the old pump. Be prepared for residual water to drain out.
9. Unclip or unscrew the old pump from its mounting bracket.
10. Carefully remove the old pump.
11. Position the new 3352293 drain pump in the same location as the old one.
12. Secure the new pump to the mounting bracket using clips or screws.
13. Reconnect the hoses to the new pump, ensuring they are tightly secured to prevent leaks.
14. Reconnect the electrical wiring to the new pump.
15. Return the washing machine to its upright position.
16. Reconnect the water inlet hoses and drain hose.
17. Turn on the water supply.
18. Plug the washing machine back into the electrical outlet.
19. Run a short test cycle to check for leaks and proper drainage.

5. OPERATING INSTRUCTIONS

The 3352293 drain pump operates automatically as an integral part of your washing machine's wash and rinse cycles. It is activated by the washing machine's control system to remove water from the tub at specific points in the cycle.

- Ensure the drain hose is properly installed and free of kinks or blockages.
- The pump will engage automatically when the washing machine requires water to be drained.

6. MAINTENANCE

Regular maintenance can extend the life of your drain pump and prevent common issues.

- **Inspect Hoses:** Periodically check the drain hoses for cracks, leaks, or blockages.
- **Clean Filter (if applicable):** Some washing machines have a pump filter that can be accessed and cleaned. Refer to your washing machine's main instruction manual for details.
- **Avoid Overloading:** Overloading the washing machine can put undue stress on the pump.

7. TROUBLESHOOTING

If your washing machine is experiencing drainage issues, the drain pump may be the cause. Here are some common problems and potential solutions:

Your browser does not support the video tag.

Video: This video demonstrates how to fix common symptoms like leaking water from the washer machine or the water pump, which can be resolved by replacing the drain pump.

Problem	Possible Cause	Solution
---------	----------------	----------

Problem	Possible Cause	Solution
Washing machine not draining	Clogged drain hose or pump filter, faulty drain pump, electrical issue.	Check and clear drain hose/filter. Inspect pump for obstructions. Test pump for continuity. Replace if faulty.
Water leaking from pump area	Loose hose connections, cracked pump housing, worn seals.	Tighten hose clamps. Inspect pump housing for damage. Replace pump if housing is cracked or seals are worn.
Loud noise during drainage	Debris in the pump, worn pump bearings, faulty motor.	Inspect pump for foreign objects. If noise persists and no debris is found, the pump may need replacement.

8. SPECIFICATIONS

Feature	Detail
Brand	Kenmore
Model Number	3352293
Type	Direct Drive Drain Pump
Material	Plastic
Color	White
Item Weight	9 Ounces
Product Dimensions	6 x 6 x 6 inches
Power Source	AC/DC
Replaces Part Numbers	AP2907492, AP6008107, PS11741239, PS3424234, LP116

9. WARRANTY AND SUPPORT

For specific warranty information, please refer to the documentation provided with your original washing machine or contact the retailer where you purchased this replacement part. For further assistance or technical support, please contact the product manufacturer or a certified appliance technician.