

[Manuals.plus](#) /

> [Whirlpool](#) /

> Whirlpool 358276 Inlet Valve Instruction Manual

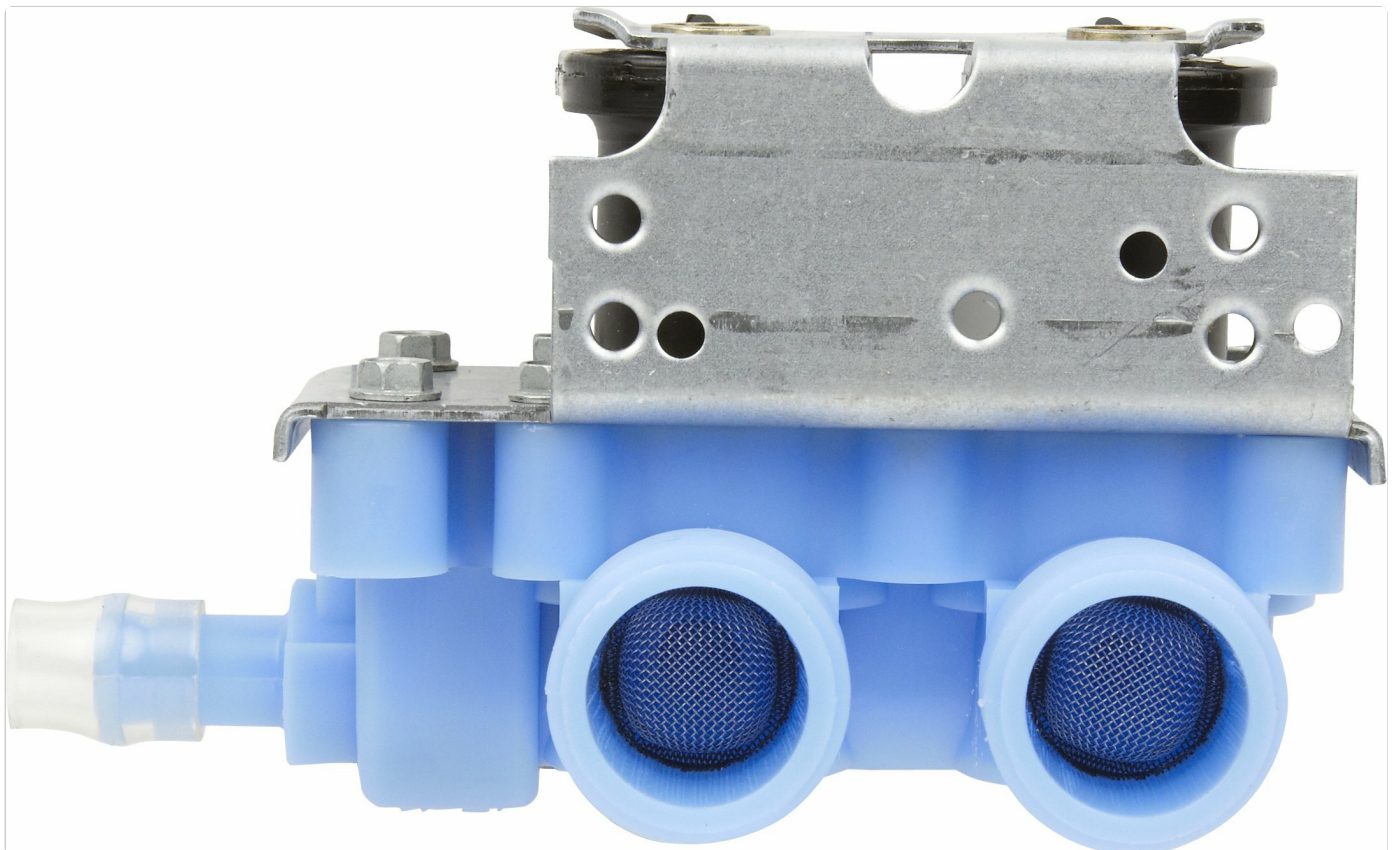
## Whirlpool 358276

# Whirlpool 358276 Inlet Valve Instruction Manual

## INTRODUCTION

This manual provides essential information for the installation, operation, and maintenance of the Whirlpool 358276 Inlet Valve. This genuine replacement part is designed to control water flow into compatible Whirlpool appliances. Please read these instructions carefully before proceeding with any installation or service.

## PRODUCT OVERVIEW



**Image 1:** The Whirlpool 358276 Inlet Valve. This component is crucial for regulating water supply to your appliance.

The Whirlpool 358276 Inlet Valve is a critical component responsible for regulating the flow of water into your appliance. It is constructed from durable metal and plastic materials, ensuring reliable performance. This valve features a single port with a solvent inlet connection and an NPT outlet connection.

## SETUP AND INSTALLATION

---

**Safety First:** Before attempting any installation or replacement, ensure the appliance is disconnected from its power source and the main water supply is turned off. Failure to do so can result in electric shock, water damage, or personal injury.

- 1. Prepare the Appliance:** Access the existing inlet valve on your appliance. This may require moving the appliance and removing access panels. Refer to your specific appliance's service manual for detailed instructions on accessing the valve.
- 2. Disconnect Old Valve:** Carefully disconnect the water lines and electrical connections from the old inlet valve. Be prepared for residual water in the lines.
- 3. Remove Old Valve:** Unmount the old valve from its position. Note its orientation and connections for proper installation of the new valve.
- 4. Install New Valve:** Position the Whirlpool 358276 Inlet Valve in the same manner as the old one. Secure it in place.
- 5. Connect Water Lines:** Attach the water inlet and outlet lines to the new valve. Ensure all connections are tight to prevent leaks.
- 6. Connect Electrical:** Reconnect the electrical wiring to the valve's solenoid. Ensure connections are secure.
- 7. Restore Water and Power:** Slowly turn on the main water supply and check for any leaks. Once confirmed leak-free, restore power to the appliance.
- 8. Test Operation:** Run a short cycle on your appliance to verify the new inlet valve is functioning correctly and water is flowing as expected.

For appliance-specific installation details, always consult the service manual provided with your original appliance.

## OPERATING PRINCIPLES

---

The Whirlpool 358276 Inlet Valve operates automatically in response to signals from your appliance's control system. When the appliance requires water (e.g., during a wash or rinse cycle), the control system sends an electrical signal to the valve's solenoid. This signal energizes the solenoid, opening the valve and allowing water to flow into the appliance. Once the required water level is reached or the cycle progresses, the signal is removed, and the valve closes, stopping the water flow.

## MAINTENANCE

---

The Whirlpool 358276 Inlet Valve is designed for minimal maintenance. However, periodic inspection can help ensure its longevity and proper function:

- **Check for Leaks:** Periodically inspect the valve and its connections for any signs of water leaks. Address any leaks immediately by tightening connections or replacing seals if necessary.
- **Inspect Inlet Screen:** Some inlet valves may have a small screen or filter at the water inlet to prevent debris from entering. If your appliance's valve has one, check it for blockages and clean it gently if needed. Ensure the water supply is off before inspecting or cleaning.
- **Environmental Factors:** Protect the appliance and valve from extreme temperatures and humidity, which can affect

component lifespan.

## TROUBLESHOOTING

If you experience issues with water supply to your appliance, the inlet valve may be a contributing factor. Here are common problems and potential solutions:

Problem	Possible Cause	Solution
No water entering appliance	<ul style="list-style-type: none"><li>• Water supply turned off</li><li>• Clogged inlet screen</li><li>• Faulty valve solenoid</li></ul>	<ul style="list-style-type: none"><li>• Check main water supply</li><li>• Clean inlet screen (ensure water is off)</li><li>• Test solenoid for continuity; replace valve if faulty</li></ul>
Slow water fill	<ul style="list-style-type: none"><li>• Low water pressure</li><li>• Partially clogged inlet screen</li></ul>	<ul style="list-style-type: none"><li>• Verify household water pressure</li><li>• Clean inlet screen</li></ul>
Continuous water fill (valve not closing)	<ul style="list-style-type: none"><li>• Faulty valve solenoid or internal mechanism</li><li>• Debris preventing valve closure</li></ul>	<ul style="list-style-type: none"><li>• Replace the inlet valve</li></ul>
Water leaks from valve	<ul style="list-style-type: none"><li>• Loose connections</li><li>• Cracked valve housing</li><li>• Damaged seals</li></ul>	<ul style="list-style-type: none"><li>• Tighten water line connections</li><li>• Replace the inlet valve</li></ul>

If troubleshooting steps do not resolve the issue, it is recommended to consult a qualified appliance technician.

## SPECIFICATIONS

- **Model Number:** 358276
- **Brand:** Whirlpool
- **Material:** Metal, Plastic
- **Item Dimensions (L x W x H):** 1.5 x 2.5 x 3.5 inches
- **Item Weight:** 12 ounces
- **Inlet Connection Type:** Solvent
- **Outlet Connection Type:** NPT
- **Number of Ports:** 1
- **Valve Type:** Globe Valve
- **Manufacturer:** Whirlpool

## WARRANTY AND SUPPORT

As a replacement part, the warranty for the Whirlpool 358276 Inlet Valve typically aligns with the warranty terms provided by Whirlpool for genuine replacement parts. Please retain your proof of purchase. For specific warranty details, claims, or technical support, it is recommended to contact Whirlpool customer service directly or visit their official website.

You can find more information about Whirlpool products and support at the [Whirlpool Store](#).



