

Whirlpool 280187

Whirlpool 280187 Washer Drain Pump Instruction Manual

Model: 280187

1. INTRODUCTION

This manual provides essential information for the installation, operation, maintenance, and troubleshooting of the Whirlpool 280187 Washer Drain Pump. This component is a genuine replacement part designed for Whirlpool washing machines and compatible models.

2. SAFETY INFORMATION

- **Disconnect Power:** Always unplug the washing machine from the electrical outlet before attempting any installation, maintenance, or repair. Failure to do so can result in electric shock or serious injury.
- **Water Shut-off:** Turn off the water supply to the washing machine before beginning any work to prevent water leaks.
- **Wear Protective Gear:** Use appropriate personal protective equipment, such as gloves and safety glasses, during installation and maintenance.
- **Professional Assistance:** If you are unsure about any step or uncomfortable performing the repair, consult a qualified appliance technician.
- **Drain Water:** Be prepared to drain residual water from the washer tub and hoses before removing the old pump. Have towels and a bucket ready.

3. PRODUCT DESCRIPTION

The Whirlpool 280187 Washer Drain Pump is a critical component responsible for removing water from the washing machine tub during the drain and spin cycles. This is a genuine Whirlpool replacement part, ensuring compatibility and performance with your appliance. It is also referred to as a Supco LP280187 Washer Motor.

Key Features:

- Manufacturer model # 280187

- Genuine Replacement Part
- Lambro item

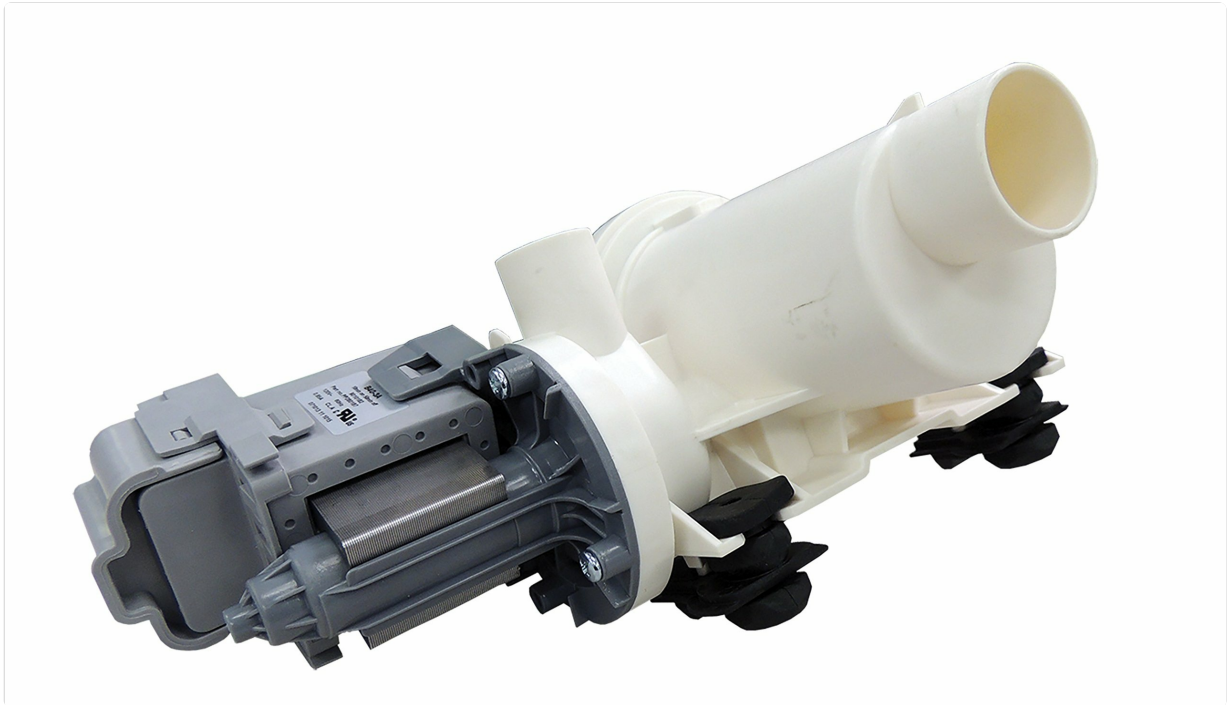


Image showing the Whirlpool 280187 Washer Drain Pump assembly.

4. INSTALLATION

Replacing a washer drain pump requires careful attention to detail. Refer to your specific washing machine's service manual for detailed, model-specific instructions. The following are general steps:

1. **Prepare the Washer:** Disconnect the washer from power and water supply. Pull the washer away from the wall to access the rear or front panel, depending on your model.
2. **Access the Pump:** Depending on your washer model (front-load or top-load), you may need to remove the front panel, rear panel, or tilt the machine back to access the drain pump located at the bottom.
3. **Drain Residual Water:** Place a shallow pan or bucket under the drain pump. Carefully disconnect the hoses connected to the pump to allow any remaining water to drain. Be prepared for a significant amount of water.
4. **Disconnect Electrical Connections:** Unplug the electrical connector(s) from the old drain pump.
5. **Remove Old Pump:** Detach the old drain pump from its mounting brackets. This may involve unscrewing fasteners or releasing clips. Note the orientation of the pump and hoses for correct reinstallation.
6. **Install New Pump:** Position the new Whirlpool 280187 drain pump in the same orientation as the old one. Secure it with the appropriate fasteners or clips. Ensure any included grommets are correctly used for a secure fit.
7. **Reconnect Hoses:** Attach the drain hoses to the new pump. Use hose clamp pliers to secure the clamps tightly to prevent leaks.
8. **Reconnect Electrical:** Plug the electrical connector(s) back into the new pump.
9. **Test for Leaks:** Before fully reassembling the washer, reconnect the water supply and power. Run a short drain/spin cycle and carefully check for any leaks around the new pump and hose connections.

10. **Reassemble Washer:** Once you confirm there are no leaks, reattach any panels removed during installation.

5. OPERATING

The Whirlpool 280187 Washer Drain Pump operates automatically as part of your washing machine's cycle. It activates during the drain and spin phases to remove water from the wash tub. No manual intervention is required for its operation once correctly installed.

6. MAINTENANCE

To ensure the longevity and efficient operation of your washer drain pump, consider the following maintenance tips:

- **Regular Filter Cleaning:** Many washing machines have a drain pump filter or coin trap that should be cleaned periodically. Consult your washer's user manual for instructions on how to access and clean this filter. Removing lint, coins, or small objects can prevent blockages and pump damage.
- **Avoid Overloading:** Overloading the washing machine can put undue stress on all components, including the drain pump.
- **Check for Unusual Noises:** If you hear grinding, humming, or other unusual noises during the drain cycle, it may indicate an issue with the pump or an obstruction. Address these issues promptly.

7. TROUBLESHOOTING

If your washing machine is experiencing draining issues, the drain pump may be the cause. Here are common symptoms and potential solutions:

- **Washer Not Draining:** This is the most common symptom of a faulty drain pump or a blockage. First, check the drain pump filter for obstructions. If the filter is clear, the pump itself may be defective and require replacement.
- **Error Codes (e.g., F02, P02):** Many washers display error codes related to draining issues. Consult your washer's specific error code chart. These codes often point to a drain pump malfunction or a clogged drain line.
- **Loud Noises During Drain Cycle:** Grinding, humming, or rattling noises can indicate that an object is caught in the pump impeller or that the pump motor is failing.
- **Water Leaks:** Leaks around the drain pump area can be due to loose hose connections, a cracked pump housing, or worn seals. Ensure all connections are tight and inspect the pump for visible damage.

If troubleshooting steps do not resolve the issue, the drain pump may need to be replaced. Refer to the installation section or consult a professional technician.

8. SPECIFICATIONS

Specification	Detail
Brand	Whirlpool

Model Number	280187
Part Number	280187
Item Weight	2 Pounds
Product Dimensions	1.5 x 2.5 x 3.5 inches
Power Source	Corded Electric
Color	White
Style	Drain Pump
UPC	852670974828

9. WARRANTY AND SUPPORT

This Whirlpool 280187 Washer Drain Pump is subject to a **30-day return policy** and a **90-day defective returns policy**. For specific warranty claims or technical support, please refer to the documentation provided with your original washing machine or contact Whirlpool customer service directly. For additional assistance, you may visit the [Whirlpool Store on Amazon](#).