

KabelDirekt 275

KabelDirekt TOSLINK Optical Audio Cable User Manual

Model: 275
Designed in Germany

1. INTRODUCTION

This manual provides essential information for the proper installation, operation, and maintenance of your KabelDirekt TOSLINK Optical Audio Cable. This high-quality fiber optic cable is designed to transmit crystal-clear digital audio signals between compatible devices.

What's in the Box:

- KabelDirekt - TOSLINK - 10ft Optical Audio Cable

2. PRODUCT FEATURES

- **Optical Digital Audio Cable:** Perfect for equipment with a TOSLINK interface (OPT In / OPT Out or S/PDIF In / S/PDIF Out). Features a TOSLINK connector to TOSLINK connector (F05 connector).
- **Versatile Compatibility:** Ideal for transmitting digital audio from devices such as TVs, video game consoles (PS3/PS4/Xbox One), DVD/Blu-ray players, or TV streaming boxes to soundbars, amplifiers/amps, stereo/Hi-Fi systems, D/A converters, and more.
- **High-End Construction:** This metal-free fiber optic audio cable, featuring a fully flexible PVC jacket, is entirely immune to electrical interference. Each cable undergoes multi-stage testing during manufacturing to ensure maximum product quality and durability.
- **24K Gold-Plated Connectors:** Corrosion-resistant gold plating keeps connectors clean. As fiber optic cables, they provide 100% signal transmission with 0% loss.
- **Reliability:** Backed by a 36-month manufacturer warranty.



Image: The KabelDirekt TOSLINK Optical Audio Cable, showcasing its robust design and gold-plated connectors.



Image: Illustration of the TOSLINK cable's compatibility with various audio devices including DVD players, speakers, computers, PS3/PS4 consoles, and amplifiers.

3. SETUP GUIDE

1. **Identify Ports:** Locate the optical audio output (usually labeled "Optical Out," "Digital Audio Out," or "S/PDIF Out") on your source device (e.g., TV, game console, Blu-ray player) and the optical audio input (usually labeled "Optical In," "Digital Audio In," or "S/PDIF In") on your receiving device (e.g., soundbar, amplifier).
2. **Remove Protective Caps:** Carefully remove the clear plastic protective caps from both ends of the TOSLINK cable. These caps protect the delicate optical fibers during shipping.

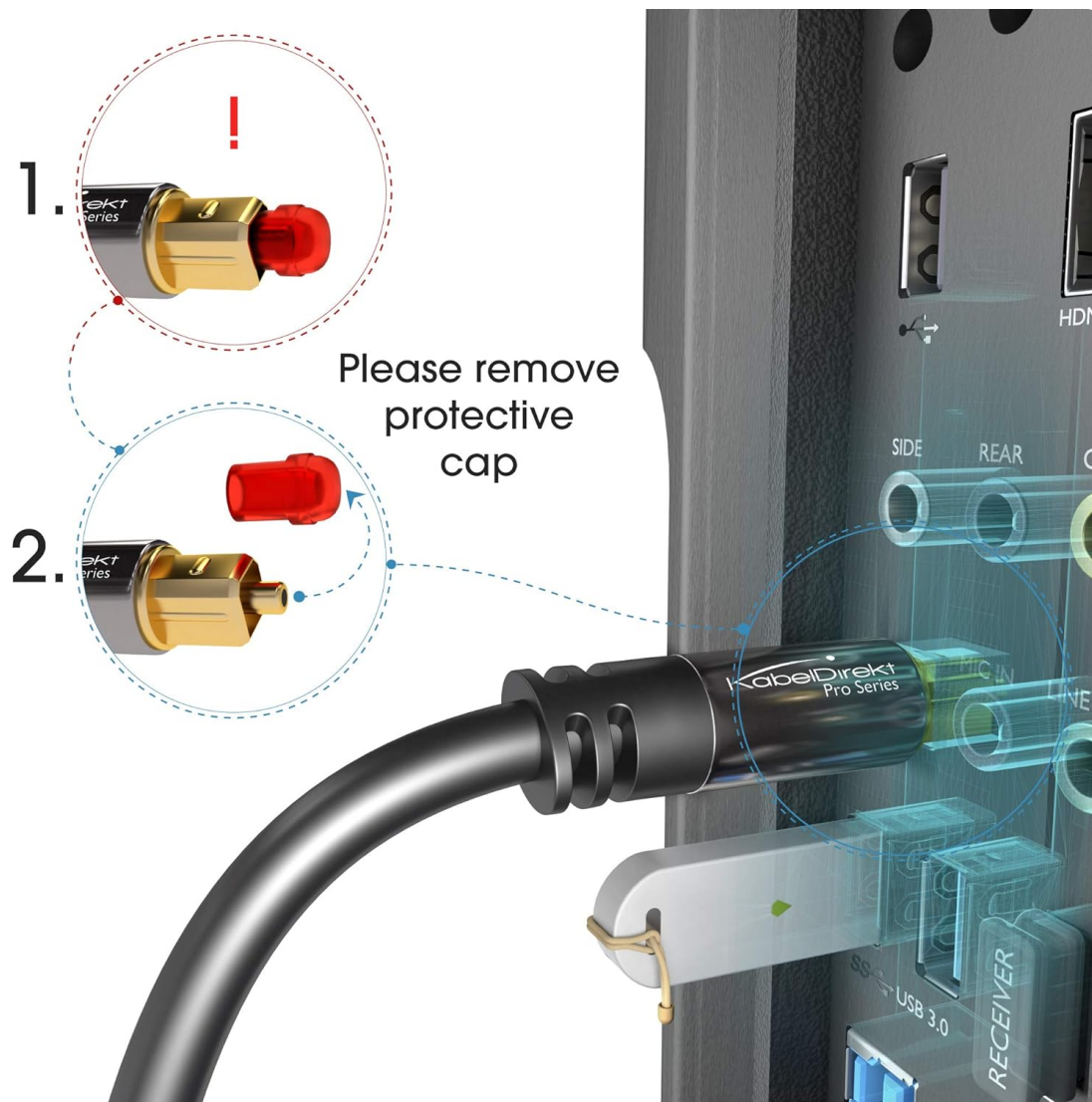


Image: Diagram illustrating the process of removing the red protective cap from the TOSLINK cable connector before insertion.

3. **Connect Cable:** Gently insert one end of the TOSLINK cable into the optical audio output port of your source device until it clicks into place. Then, insert the other end into the optical audio input port of your receiving device until it clicks. Ensure the connectors are aligned correctly to avoid damage.



Image: A KabelDirekt TOSLINK cable properly connected to the optical input port of a soundbar or media hub.



Image: The TOSLINK cable connected to the optical audio output of a media box, demonstrating a secure connection.

4. **Configure Audio Settings:** On your source device (e.g., TV), navigate to the audio settings menu and select "Optical" or "S/PDIF" as the audio output method. On your receiving device (e.g., soundbar), ensure the input is set to "Optical" or "Digital In."

4. OPERATING INSTRUCTIONS

The KabelDirekt TOSLINK Optical Audio Cable is a passive component designed for reliable digital audio signal transmission. Once properly connected and configured, it operates automatically.

- Ensure both the source and receiving devices are powered on.
- Verify that the audio output settings on your source device are correctly configured for optical output.
- Confirm that your receiving device's input is set to the corresponding optical input.
- The cable will transmit the digital audio signal, providing clear sound without electrical interference.

Your browser does not support the video tag.

Video: An official video from KabelDirekt demonstrating the features and benefits of their TOSLINK cables, highlighting their quality and performance.

5. MAINTENANCE

To ensure the longevity and optimal performance of your KabelDirekt TOSLINK Optical Audio Cable, follow these maintenance guidelines:

- **Avoid Sharp Bends:** Optical fiber cables are sensitive to sharp bends. Do not bend the cable at angles tighter than its minimum bend radius to prevent damage to the internal fiber.
- **Keep Connectors Clean:** Dust and debris on the optical connectors can degrade signal quality. If necessary, gently clean the connector tips with a lint-free cloth or a specialized optical fiber cleaning tool. Avoid touching the tips with your fingers.
- **Store Properly:** When not in use, store the cable coiled loosely and replace the protective caps on the connectors to prevent dust accumulation and damage.
- **Handle with Care:** Always grasp the connector housing when plugging or unplugging the cable, not the cable itself.



Image: An illustration showing light transmission through an optical fiber, emphasizing the delicate nature of the internal components.

6. TROUBLESHOOTING

If you experience issues with your TOSLINK cable, consider the following common troubleshooting steps:

Problem	Possible Cause	Solution
No Sound	<ul style="list-style-type: none">◦ Cable not fully inserted.◦ Protective caps still on.◦ Incorrect audio output/input settings.◦ Damaged cable.	<ul style="list-style-type: none">◦ Ensure cable is securely connected at both ends.◦ Remove all protective caps.◦ Verify optical output is selected on source device and optical input on receiving device.◦ Inspect cable for visible damage (e.g., kinks, frayed jacket). Replace if damaged.
Intermittent Sound / Static	<ul style="list-style-type: none">◦ Dirty connectors.◦ Cable bent too sharply.◦ Loose connection.	<ul style="list-style-type: none">◦ Clean connector tips carefully.◦ Ensure cable routing avoids sharp bends.◦ Reseat the cable firmly in both ports.

7. SPECIFICATIONS

Attribute	Detail
Brand	KabelDirekt
Model Number	275
Product Dimensions	5.5 x 0.8 x 4.8 inches; 4.96 ounces
Connector Type	Optical, Toslink, S/PDIF (F05)
Cable Type	Fiber Optic
Special Feature	24K gold-plated connectors, metal case, fiber optic cable
Compatible Devices	Televisions, Soundbars, AV Receivers, Blu-ray/DVD Players, Game Consoles (Xbox One, Xbox Series X/S, PS4, PS5), Media Players, Home Theater Systems, Computers
Country of Origin	China



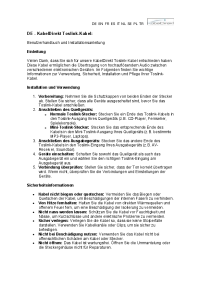

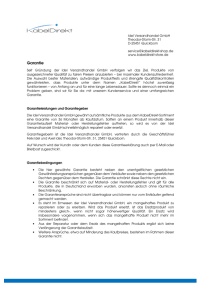
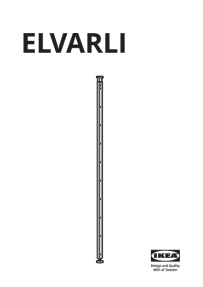
Image: Detailed dimensions of the TOSLINK connector, showing its length and width for compatibility reference.

8. WARRANTY AND SUPPORT

KabelDirekt stands behind the quality of its products. Your KabelDirekt TOSLINK Optical Audio Cable comes with a **36-month manufacturer warranty**.

For technical support, warranty claims, or any questions regarding your product, please contact KabelDirekt customer service. Refer to the product packaging or the official KabelDirekt website for the most current contact information.

You can also visit the official KabelDirekt Store on Amazon for more information and products:
[KabelDirekt Store](#)

	<p>KabelDirekt Toslink Cable User Manual and Installation Guide</p> <p>A comprehensive guide for KabelDirekt Toslink cables, detailing installation, usage, safety precautions, maintenance, troubleshooting, and technical specifications for high-resolution audio transmission.</p>
	<p>KabelDirekt Optical HDMI Cable - Ultra High Speed 48G</p> <p>Detailed information about the KabelDirekt Optical HDMI Cable, featuring Ultra High Speed 48G, HDCP 2.3, and lossless transmission for 8K signals. Includes technical specifications, safety guidelines, warranty, and environmental disposal information.</p>
	<p>KabelDirekt Garantieinformationen und Garantiebedingungen Idel Versandhandel GmbH</p> <p>Umfassende Garantieinformationen für KabelDirekt-Produkte von Idel Versandhandel GmbH. Erfahren Sie mehr über Abdeckung, Bedingungen, Ausschlüsse und wie Sie Ihre 36-monatige Garantie in Anspruch nehmen.</p>
	<p>ELVARLI Storage System Assembly Instructions IKEA</p> <p>Detailed assembly instructions for the IKEA ELVARLI adjustable shelving and storage system. Learn how to safely install and configure your ELVARLI unit.</p>