

Western Digital WD10SPCX

Western Digital WD Blue 1TB Laptop Hard Drive (WD10SPCX) User Manual

Model: WD10SPCX

1. Product Overview

The Western Digital WD Blue 1TB Laptop Hard Drive (Model WD10SPCX) is a 2.5-inch internal storage solution designed for portable computing. It offers a balance of capacity, performance, and reliability for everyday use in notebooks, external enclosures, and certain industrial applications.



Image 1.1: Top view of the WD Blue 1TB Laptop Hard Drive, showing the WD logo and "Slim" branding.

KEY FEATURES:

- **Capacity:** 1TB of storage, capable of holding approximately 200,000 digital photos, 250,000 MP3 files, or 120 hours of HD video.
- **Form Factor:** 2.5-inch, 7mm height, suitable for thin laptops and tablets.
- **Interface:** SATA 6Gb/s for fast data transfer rates.
- **Rotational Speed:** 5400 RPM.
- **Cache:** 8MB for improved performance.
- **Reliability:** Features ShockGuard technology to protect drive mechanics and platter surfaces from shocks, and SecurePark technology to park recording heads off the disk surface during spin-up, spin-down, and when the drive is off.
- **Quiet Operation:** Designed for low power consumption and ultra-quiet performance.
- **NoTouch Ramp Load Technology:** Ensures the recording head never touches the disk media, reducing wear and enhancing protection during transit.

2. Setup and Installation

This section provides general guidelines for installing your WD Blue hard drive. Specific installation steps may vary depending on your laptop model or external enclosure. It is recommended to consult your device's manual for detailed instructions.

2.1 BEFORE YOU BEGIN

- **Compatibility:** Ensure your device supports a 2.5-inch SATA hard drive with a 7mm height.
- **Tools:** You may need a small Phillips head screwdriver.
- **Mounting Hardware:** Screws and cables are not included with the hard drive. Please acquire necessary mounting hardware and SATA cables separately if required.
- **Backup Data:** If replacing an existing drive, back up all critical data before proceeding with the installation.
- **Power Off:** Always power off and unplug your computer or enclosure before opening it.
- **Static Protection:** Use an anti-static wrist strap or touch a grounded metal object to discharge static electricity before handling the drive.

2.2 PHYSICAL INSTALLATION

1. Locate the hard drive bay in your laptop or external enclosure.
2. Carefully slide the WD Blue hard drive into the bay, ensuring the SATA connector aligns correctly.
3. Secure the drive using the appropriate screws (if applicable for your device).
4. Close the laptop or enclosure cover.



Image 2.1: Side view of the WD Blue hard drive, highlighting the SATA data and power connectors for installation.

2.3 INITIALIZING AND FORMATTING (NEW DRIVE)

After physical installation, a new hard drive needs to be initialized and formatted before it can be used by your operating system.

1. Power on your computer.
2. Access Disk Management (Windows) or Disk Utility (macOS).
3. Locate the newly installed drive. It will likely appear as "Unallocated" or "Not Initialized."
4. Initialize the disk (usually MBR or GPT, GPT is recommended for drives larger than 2TB, though this is 1TB, GPT is still modern standard).
5. Create a new simple volume and format it with a suitable file system (e.g., NTFS for Windows, HFS+ or APFS for macOS).

2.4 DATA MIGRATION (UPGRADING AN EXISTING DRIVE)

If you are upgrading from an older drive, Western Digital provides a free download of Acronis True Image on their support site. This software allows you to copy all data from your old drive to the new WD Blue drive without reinstalling your operating system.

- Download and install WD Acronis True Image from the official Western Digital support website.

- Connect both your old drive (if external) and the new WD Blue drive to your computer.
- Follow the on-screen instructions within Acronis True Image to clone your old drive to the new WD Blue drive.
- Once cloning is complete, you can replace your old drive with the new WD Blue drive.

3. Operating the Hard Drive

The WD Blue hard drive operates as a standard internal storage device. Once installed and formatted, it will appear as a drive letter (e.g., D:, E:) in Windows or as a mounted volume in macOS. You can use it to store, retrieve, and manage your files like any other hard drive.

GENERAL USAGE:

- **File Storage:** Save documents, photos, videos, music, and other digital content.
- **Application Installation:** Install software applications directly onto the drive.
- **System Drive:** Can be used as a primary boot drive for your operating system.
- **External Storage:** When placed in a compatible external enclosure, it functions as a portable storage device.

The drive is designed for solid performance and reliability in everyday computing tasks, offering a quiet operation and efficient power consumption.

4. Maintenance

Hard drives are mechanical devices and require proper care to ensure longevity and data integrity. While the WD Blue drive incorporates features like ShockGuard and SecurePark for enhanced durability, regular user maintenance practices are crucial.

RECOMMENDED MAINTENANCE PRACTICES:

- **Regular Backups:** Periodically back up important data to another storage device (e.g., external hard drive, cloud storage) to prevent data loss in case of drive failure.
- **Avoid Physical Shock:** While the drive has shock protection, extreme impacts can still cause damage. Handle your laptop or external enclosure with care.
- **Keep Cool:** Ensure adequate ventilation for your laptop or enclosure to prevent overheating, which can degrade drive performance and lifespan.
- **Software Updates:** Keep your operating system and drivers updated to ensure optimal compatibility and performance with the hard drive.
- **Disk Health Checks:** Periodically run disk error checking tools provided by your operating system (e.g., CHKDSK on Windows, First Aid on macOS Disk Utility) to identify and repair minor file system issues.
- **Defragmentation (for HDDs):** For optimal performance on Windows, consider defragmenting the drive occasionally. macOS and Linux typically manage this automatically.

5. Troubleshooting

If you encounter issues with your WD Blue hard drive, consider the following troubleshooting steps. For more

complex problems, refer to the Western Digital support website or contact technical support.

COMMON ISSUES AND SOLUTIONS:

- **Drive Not Detected:**
 - Ensure the drive is properly seated in its bay and SATA cables are securely connected.
 - Check BIOS/UEFI settings to confirm the drive is recognized.
 - Verify power supply connections.
 - For new drives, ensure it has been initialized and formatted (refer to Section 2.3).
- **Slow Performance:**
 - Check for background processes consuming system resources.
 - Ensure sufficient free space on the drive.
 - Run disk defragmentation (Windows) or disk utility checks.
 - Check for malware or viruses.
- **Unusual Noises:**
 - Clicking, grinding, or repetitive beeping sounds can indicate a failing drive. Immediately back up data and consider replacing the drive.
 - A slight hum or whirring is normal for mechanical hard drives.
- **Data Corruption:**
 - Run disk error checking tools.
 - Ensure proper system shutdown to prevent file system damage.

If these steps do not resolve your issue, please contact Western Digital technical support.

6. Specifications

The following table details the technical specifications for the Western Digital WD Blue 1TB Laptop Hard Drive (Model WD10SPCX).

| Feature | Specification |
|--------------------------|-----------------------|
| Model Number | WD10SPCX |
| Digital Storage Capacity | 1 TB (Terabyte) |
| Form Factor | 2.5-inch |
| Height | 7 mm (0.28 inches) |
| Interface | SATA 6Gb/s (SATA III) |
| Rotational Speed | 5400 RPM |
| Cache | 8 MB |
| Item Weight | 3.17 ounces |

| Feature | Specification |
|----------------------------|---------------------------|
| Product Dimensions (LxWxH) | 3.94 x 2.75 x 0.28 inches |
| Compatible Devices | Mac, PC |
| Installation Type | Screw In |



Image 6.1: Side profile of the WD Blue hard drive, demonstrating its slim 7mm form factor.

7. Warranty and Support

7.1 LIMITED WARRANTY

The Western Digital WD Blue 1TB Laptop Hard Drive (WD10SPCX) comes with a **2-year limited warranty**. Please retain your proof of purchase for warranty claims. For full details regarding warranty terms and conditions, please visit the official Western Digital support website.

7.2 TECHNICAL SUPPORT

Western Digital provides comprehensive support resources for its products:

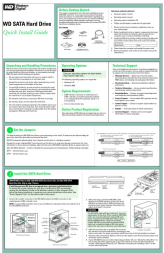



- **Knowledge Base:** Access a detailed online knowledge base with over 1,000 helpful articles covering installation, troubleshooting, and product information.
- **Functional Integrity Testing (F.I.T.):** WD products undergo extensive testing (averaging 600,000 hours per new product) to ensure quality and reliability.
- **Toll-Free Support:** Technical support is available toll-free 7 days per week in the U.S. and Canada. Refer to the official WD Support site for contact details and hours of operation.
- **WD-Certified Packaging:** Drives purchased from authorized retailers are shipped in WD-certified packaging designed for safe transit.

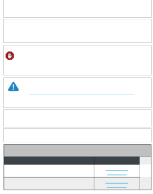
For the most up-to-date support information, drivers, and software downloads (including Acronis True Image), please visit the official Western Digital Support website: support.wdc.com

© 2025 Western Digital Corporation. All rights reserved.

This manual is for informational purposes only. Specifications are subject to change without notice.

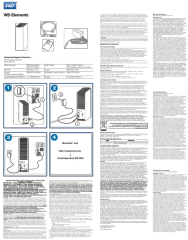
Related Documents - WD10SPCX

| | |
|---|--|
|  | <p>Western Digital WD SATA Hard Drive Quick Install Guide</p> <p>A concise guide for installing Western Digital WD SATA Hard Drives, covering pre-installation steps, physical installation, jumper settings, and using Data Lifeguard Tools for setup and management. Includes alternate installation methods for Windows XP/2000.</p> |
|  | <p>My Book VelociRaptor Duo Dual-Drive Storage System User Manual</p> <p>Comprehensive user manual for the Western Digital My Book VelociRaptor Duo dual-drive external storage system. Learn about setup, Thunderbolt connectivity, RAID configurations (RAID 0, RAID 1, JBOD), drive management with WD Drive Utilities, drive replacement, and regulatory compliance.</p> |
|  | <p>Western Digital Elements Portable USB 3.0 Quick Install Guide</p> <p>This document provides regulatory compliance information, warranty details, and service instructions for the Western Digital Elements Portable USB 3.0 external hard drive. It covers FCC Class B compliance, CE marking, KC notice, and detailed warranty terms for various regions including North America, Europe, Asia Pacific, and Australia/New Zealand. It also outlines the process for obtaining service and support.</p> |
|  | <p>WD Nomad Rugged Case: Technical Support and Limited Warranty Guide Western Digital</p> <p>Comprehensive guide to technical support and limited warranty for the Western Digital WD Nomad Rugged Case. Includes product compatibility, service procedures, warranty terms, exclusions, and regional contact information.</p> |



[How to Partition, Format, and Troubleshoot WD External Hard Drives on Windows and macOS](#)

A comprehensive guide from Western Digital (WD) detailing how to partition and format WD external hard drives for compatibility with Windows and macOS operating systems. It includes troubleshooting steps for common connection and recognition issues, guidance on using WD utilities like WD Security and WD Drive Utilities, and information on drive management.



[WD Elements External Hard Drive: Quick Start Guide and Warranty Information](#)

Get started quickly with your WD Elements external hard drive. This guide provides installation instructions, technical support details, regulatory compliance information, and comprehensive warranty details for Western Digital products.