

Spirella 10.50103

Spirella Shower Curtain Rod Surprise 10.50103 User Manual

Model: 10.50103 | Brand: Spirella

INTRODUCTION

Thank you for choosing the Spirella Shower Curtain Rod Surprise 10.50103. This manual provides essential information for the safe and correct installation, operation, and maintenance of your new shower curtain rod. Please read these instructions carefully before installation and retain them for future reference.



Image: The Spirella Shower Curtain Rod Surprise 10.50103, white, installed in a bathroom with a shower curtain.

Safety Information

- Ensure all components are present and undamaged before installation.
- Always use appropriate tools and safety gear during installation (e.g., safety glasses, gloves).
- Verify the wall material is suitable for drilling and can support the weight of the rod and a wet shower curtain. If unsure, consult a professional.
- Keep small parts out of reach of children to prevent choking hazards.
- Do not hang heavy objects from the shower curtain rod. It is designed to support a shower curtain only.
- Periodically check the rod and mounting points for stability and tightness.

Package Contents

Please check that all the following items are included in your package:

- Shower Curtain Rod sections (typically two main sections and a corner piece for 80x80cm configuration)
- Wall mounting brackets (L and R)
- Screws and wall anchors (12 pieces indicated in diagram)

- Curtain runners/gliders
- End caps



Image: Detailed view of the shower curtain rod components, including the curved section, straight section, and curtain runners.

Note: An optional ceiling support is available separately (Model numbers: 10.50218, 10.21237, 10.32250). This item is not included in the standard package.

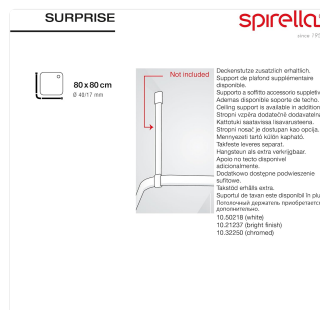
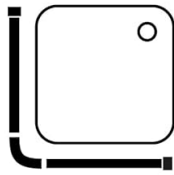


Image: Illustration of the optional ceiling support, which is sold separately.

SETUP AND INSTALLATION

Follow these steps for proper installation of your Spirella Shower Curtain Rod. Refer to the diagram for visual guidance.



80 x 80 cm

Ø 40/17 mm

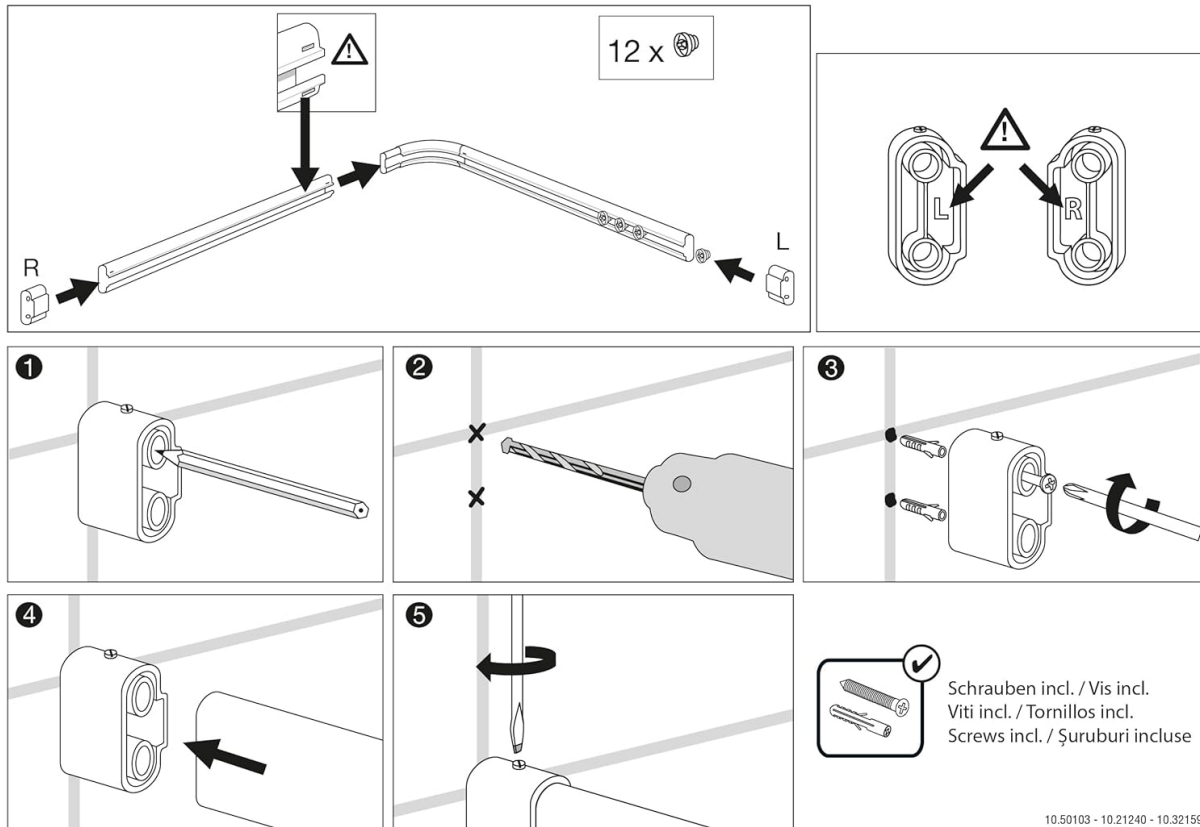


Image: Comprehensive installation diagram showing the assembly of rod sections, marking, drilling, inserting anchors, and securing wall mounts.

- Assemble Rod Sections:** Connect the rod sections (L and R) as shown in the diagram. Ensure the corner piece is correctly oriented. Insert the end caps.
- Mark Drilling Points:** Hold the assembled rod in the desired position on the wall. Use a pencil to mark the locations for the wall mounting brackets. Ensure the rod is level.
- Drill Holes:** Using an appropriate drill bit for your wall type, drill holes at the marked locations. The diagram indicates 12 screws are included, implying 6 screws per bracket (3 per side).
- Insert Wall Anchors:** Gently tap the wall anchors into the drilled holes until they are flush with the wall surface.
- Attach Wall Mounts:** Position the wall mounting brackets over the anchors and secure them firmly with the provided screws. Ensure the brackets are oriented correctly (L and R).
- Mount the Rod:** Carefully place the assembled shower curtain rod onto the installed wall mounting brackets. Ensure it clicks securely into place.
- Add Curtain Runners:** Before mounting the rod, or if the rod allows, slide the curtain runners into the track.

For optimal stability, especially in larger installations or with heavier curtains, consider installing the optional ceiling support (sold separately).

Once the shower curtain rod is securely installed, you can hang your shower curtain. Ensure the curtain hooks or rings are compatible with the rod's runners. Distribute the weight of the curtain evenly along the rod.

MAINTENANCE

- **Cleaning:** Clean the shower curtain rod regularly with a soft, damp cloth and mild soap. Avoid abrasive cleaners or harsh chemicals, as these can damage the finish.
- **Inspection:** Periodically check all mounting points and screws to ensure they remain tight and secure. Tighten any loose screws as needed.
- **Runners:** If the curtain runners become stiff, clean them and the rod track. A small amount of silicone spray can improve gliding, but avoid oil-based lubricants.

TROUBLESHOOTING

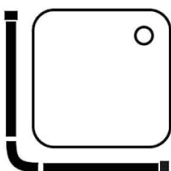
- **Rod feels loose:** Check if the mounting screws are tight. Ensure the wall anchors are properly seated. If the wall material is weak, consider using larger anchors or the optional ceiling support.
- **Curtain not gliding smoothly:** Clean the rod track and curtain runners. Ensure no debris is obstructing the path. Check if the curtain is too heavy or if the runners are damaged.
- **Difficulty assembling rod sections:** Ensure the sections are aligned correctly and pushed firmly together. Do not force them if they don't fit; check for any obstructions or damage.

SPECIFICATIONS

Brand	Spirella
Model Number	10.50103
Color	White
Dimensions	80 x 80 cm (corner configuration)
Material	Aluminum
Item Weight	790 grams
Manufacturing Origin (Diagram)	Made in Europe
Country of Origin (Specifications)	China

SURPRISE

spirella®
since 1958



80 x 80 cm

Ø 40/17 mm



10.50103 - 10.21240 - 10.32159

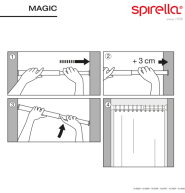
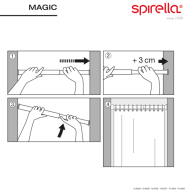
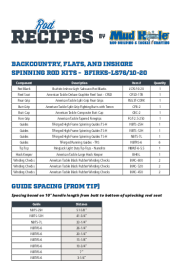
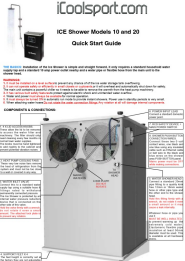

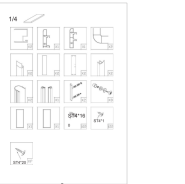
Image: Diagram highlighting the 80 x 80 cm dimensions and "Made in Europe" label, along with quick click runners.

WARRANTY AND SUPPORT

Specific warranty information for the Spirella Shower Curtain Rod Surprise 10.50103 is not provided in this manual. Please refer to the retailer's return policy or contact Spirella customer service for detailed warranty terms. For technical support or inquiries regarding your product, please visit the official Spirella website or contact their customer service department.

© 2023 Spirella. All rights reserved.

Related Documents - 10.50103

	<p>Spirella MAGIC Shower Rod Installation Guide</p> <p>Step-by-step instructions for installing the Spirella MAGIC shower rod, including length adjustment and final placement. Features model numbers and brand information.</p>
	<p>Spirella MAGIC Shower Rod Installation Guide</p> <p>Step-by-step instructions for installing the Spirella MAGIC shower rod, including length adjustment and final placement. Features model numbers and brand information.</p>
	<p>Mud Hole BFIRKS-LS76/10-20: Backcountry, Flats, Inshore Spinning Rod Kit Components & Guide Spacing</p> <p>Detailed list of components and guide spacing specifications for the Mud Hole BFIRKS-LS76/10-20 Backcountry, Flats, and Inshore Spinning Rod Kit. Includes rod blanks, reel seats, grips, guides, and more.</p>
	<p>iCoolsport ICE Shower Models 10 & 20 Quick Start Guide</p> <p>This guide provides essential information for the installation and initial setup of the iCoolsport ICE Shower Models 10 and 20. It covers basic requirements, safety warnings, component identification, connection details, and the step-by-step startup process for enjoying chilled water showers.</p>
	<p>XtremePower 10 Gallon Pool Solar Shower Owner's Manual and Safety Instructions</p> <p>Owner's manual and safety instructions for the XtremePower 10 Gallon Pool Solar Shower (Item # 75029). Includes assembly, operation, and winterization guidelines.</p>
	<p>Sicily 150 x 83 cm Whirlpool Shower Bath Installation Manual</p> <p>Comprehensive installation guide for the Sicily 150 x 83 cm full optional whirlpool shower bath, detailing all parts and step-by-step assembly procedures.</p>



[\[pdf\]](#) Accessories

Kataloger Spirella novelties 2021 Leijma Bitte nachfolgende Massangaben auf Ihrer Bestellung

vermerken Veuillez indiquer les mesures suivantes sur votre commande Per favore indicare le seguenti

1d590933 f3a8 4af5 af4c c0c7017a79c2 housewares blob core windows net hc365v2 original |||

FfaAsSHhlioOnN FfoOrRbBaAtThHrRoOoOmMsS www.spirella.ch 2021 04/03/2021

NEW COLLECTIONS 2021 Zusa ... TG STUOSITUARSBPCLRERISEREOWD

HYTDOROSFTUIGCEK AIR CIRCULATION PA COATING 40/17 mm white 80x80cm

10.50103 90x90cm 10.50104 170x75cm 10.50105 * 40/17 mm bright finish 80x80cm

10.21240 90x90cm 10...

lang:es **score:21** filesize: 14.84 M page_count: 53 document date: 2021-03-09