

Valeo 600060

Valeo 600060 Premium Starter Replacement User Manual

For Hyundai and Kia Models

1. INTRODUCTION

This manual provides essential information for the installation, operation, and maintenance of your Valeo 600060 Premium Starter Replacement. The Valeo 600060 is a 100% new starter unit, engineered to meet or exceed Original Equipment Manufacturer (OEM) specifications for durability and performance. It is designed for specific Hyundai and Kia models.

Please read this manual thoroughly before attempting any installation or service to ensure proper function and safety.

2. SAFETY INFORMATION

Always observe the following safety precautions when working with automotive electrical systems and components:

- **Disconnect Battery:** Always disconnect the vehicle's negative battery terminal before beginning any work on the electrical system to prevent electrical shock or short circuits.
- **Wear Protective Gear:** Use appropriate personal protective equipment, including safety glasses and gloves.
- **Professional Installation Recommended:** Installation of a starter motor can be complex and may require specialized tools and knowledge. It is highly recommended that installation be performed by a qualified automotive technician.
- **Avoid Hot Surfaces:** Engine components can be extremely hot. Allow the engine to cool before working on it.
- **Secure Vehicle:** Ensure the vehicle is securely supported on jack stands if lifted. Never rely solely on a jack.
- **Proper Torque:** Ensure all fasteners are tightened to the manufacturer's specified torque values.

3. PRODUCT OVERVIEW

The Valeo 600060 is a premium starter motor designed to reliably start your vehicle's engine. It features 100% new components, ensuring optimal performance and longevity.



Image 3.1: Front view of the Valeo 600060 starter motor, showing the main housing and mounting points. The Valeo logo is visible on the casing.

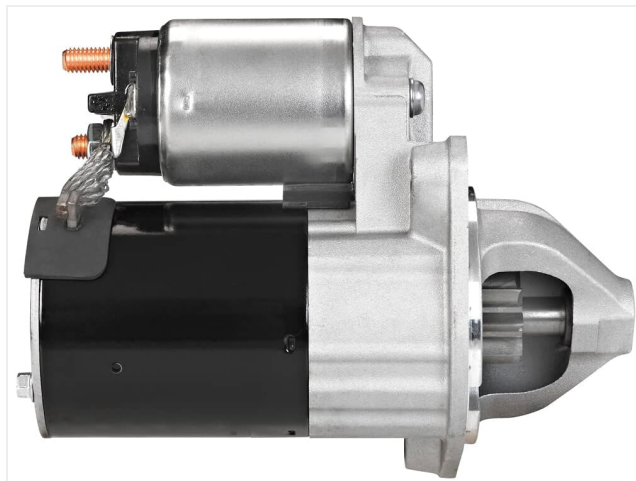


Image 3.2: Side view of the Valeo 600060 starter motor, illustrating the motor body, solenoid, and the drive gear (bendix) assembly.



Image 3.3: Rear view of the Valeo 600060 starter motor, highlighting the electrical terminals for battery and ignition connections.

4. VEHICLE COMPATIBILITY

The Valeo 600060 Premium Starter Replacement is compatible with the following vehicle models. Always verify fitment using your vehicle's year, make, and model before installation.

- **Hyundai Tucson:** 2005-2009
- **Hyundai Tiburon:** 1997-2001, 2003-2005
- **Hyundai Elantra:** 1996-1998, 2001-2006
- **Kia Spectra5:** 2005-2006
- **Kia Spectra:** 2004-2006

OEM Part Numbers: 10023161, 3610023161, 3610023150, 3610023100, 3610023120, 3610023160, 3610023160RU, S0001196228.

5. INSTALLATION GUIDELINES

The following are general guidelines for starter motor replacement. Specific steps may vary by vehicle model. Refer to your vehicle's service manual for detailed instructions.

1. **Prepare Vehicle:** Park the vehicle on a level surface, engage the parking brake, and turn off the engine.

Allow the engine to cool completely.

2. **Disconnect Battery:** Disconnect the negative (-) battery cable first, followed by the positive (+) battery cable. Isolate the cables to prevent accidental contact.
3. **Locate Starter:** Identify the location of the starter motor on your vehicle. It is typically mounted on the engine block, near the transmission.
4. **Remove Electrical Connections:** Disconnect the main battery cable and the solenoid wire from the old starter. Note their positions for reinstallation.
5. **Remove Mounting Bolts:** Unbolt the starter motor from the engine block. Be prepared to support the starter as it may be heavy.
6. **Remove Old Starter:** Carefully remove the old starter from the vehicle.
7. **Install New Starter:** Position the new Valeo 600060 starter in place and secure it with the mounting bolts. Tighten bolts to the manufacturer's specifications.
8. **Reconnect Electrical Connections:** Reattach the main battery cable and solenoid wire to the new starter. Ensure connections are clean and tight.
9. **Reconnect Battery:** Reconnect the positive (+) battery cable first, then the negative (-) battery cable.
10. **Test Operation:** Attempt to start the vehicle to confirm proper operation of the new starter.

Note: If you are unsure about any step, consult a professional mechanic.

6. OPERATION

The starter motor is an integral part of your vehicle's ignition system. When you turn the ignition key or press the start button, the starter motor engages with the engine's flywheel, rotating the crankshaft to initiate the combustion process. Once the engine starts, the starter disengages automatically.

The Valeo 600060 is designed for reliable and efficient engine starting. Avoid prolonged cranking (more than 10-15 seconds) to prevent overheating the starter motor. If the engine does not start after a few attempts, allow the starter to cool down before trying again, and investigate the underlying cause.

7. MAINTENANCE

The Valeo 600060 starter motor is a sealed unit and generally requires no routine maintenance. However, periodic checks of related components can help ensure its longevity:

- **Battery Condition:** Ensure your vehicle's battery is in good condition and fully charged. A weak battery can strain the starter.
- **Cable Connections:** Periodically inspect the battery cables and starter motor connections for corrosion or looseness. Clean and tighten as necessary.
- **Ground Connections:** Verify that all ground connections related to the starter and battery are clean and secure.

8. TROUBLESHOOTING

If you experience issues with your vehicle's starting system after installing the Valeo 600060, consider the following common problems and solutions:

Symptom	Possible Cause	Solution
Starter clicks but engine does not crank	Weak or dead battery; loose or corroded battery terminals; faulty starter solenoid (less likely with new unit).	Check battery charge and terminals. Clean and tighten connections. Test battery.

Symptom	Possible Cause	Solution
Starter cranks slowly	Low battery charge; poor battery cable connections; high resistance in starter circuit.	Charge or replace battery. Inspect and clean all electrical connections.
No sound or click when turning key	Blown fuse; faulty ignition switch; open circuit in starter wiring; neutral safety switch issue.	Check fuses. Verify ignition switch operation. Inspect wiring. Check neutral safety switch.
Starter spins but engine does not crank	Faulty starter drive (bendix) not engaging flywheel.	This indicates a potential defect in the starter unit. Contact Valeo support or your installer.

If these steps do not resolve the issue, professional diagnosis is recommended.

9. SPECIFICATIONS







Feature	Value
Model Number	600060
Brand	Valeo
Wattage	1.4 KW
Voltage	12 Volts
Amperage	16 Amps
Item Weight	6.36 pounds (2.89 Kilograms)
Product Dimensions (L x W x H)	9.12 x 5.57 x 3.4 inches
Condition	100% New Components
OEM Specifications	Meets or exceeds

10. WARRANTY AND SUPPORT

For warranty information or technical support regarding your Valeo 600060 Premium Starter Replacement, please refer to the documentation provided with your purchase or visit the official Valeo website. Keep your proof of purchase for warranty claims.

You can find more information about Valeo products and support at the [Valeo Store on Amazon](#).

Related Documents - 600060

	<p>Valeo PS2M-C1 Power Smart ECU Technical Specification and User Information</p> <p>Technical documentation for the Valeo PS2M-C1 Power Smart ECU (PEPS), detailing its functionality as a passive entry and passive start system, manufacturer information, and regulatory compliance statements.</p>
	<p>Valeo beep&park Parking Assistance System User Guide</p> <p>Comprehensive user guide for the Valeo beep&park parking assistance system, detailing product descriptions, kit configurations, utilization, alert activation, sensor diagnostics, and recommendations for safe and effective use.</p>
	<p>Valeo HFM2 Keyless Entry and Start System Owner's Manual</p> <p>Comprehensive owner's manual excerpt for the Valeo HFM2 system, detailing keyless entry, remote control functions, locking/unlocking procedures, alarm system operation, and engine starting/stopping for vehicles.</p>
	<p>Valeo Engine Cooling Catalogue 2012-2013: Comprehensive Automotive Parts</p> <p>Explore the extensive Valeo 2012-2013 Engine Cooling catalogue, featuring a wide selection of radiators, condensers, oil coolers, and more for numerous vehicle makes and models. Find high-quality automotive replacement parts for optimal performance and reliability.</p>
	<p>Valeo Fitness Wristbands for Weightlifting Support</p> <p>Durable and supportive wristbands from Valeo Fitness, designed to enhance stability and prevent injury during weightlifting and other strenuous exercises. Features adjustable closure for a secure fit.</p>
	<p>Valeo Lanzamientos: Alternadores y Motores de Arranque</p> <p>Catálogo de lanzamientos de Valeo Service para alternadores y motores de arranque, detallando aplicaciones, códigos OE, y compatibilidad con vehículos de diversos fabricantes automotrices.</p>