

VOLTCRAFT AM-60X46/30V/DC

VOLTCRAFT AM-60X46/30V/DC Panel Meter Instruction Manual

Model: AM-60X46/30V/DC

1. INTRODUCTION

This instruction manual provides essential information for the safe and effective use of your VOLTCRAFT AM-60X46/30V/DC Panel Meter. Please read this manual thoroughly before installation and operation, and retain it for future reference.

2. SAFETY INFORMATION

Warning: Electrical shock hazard. Improper use can result in injury or death. Always observe the following safety precautions:

- Ensure the power supply is disconnected before installation or maintenance.
- Only qualified personnel should perform installation and wiring.
- Do not exceed the specified voltage range of 30V DC.
- Do not operate the device if it appears damaged.
- Keep the device dry and away from extreme temperatures.

3. PRODUCT OVERVIEW

The VOLTCRAFT AM-60X46/30V/DC is a compact analog panel meter designed for measuring DC voltage up to 30V. It features a clear, easy-to-read scale and a robust construction suitable for various applications.

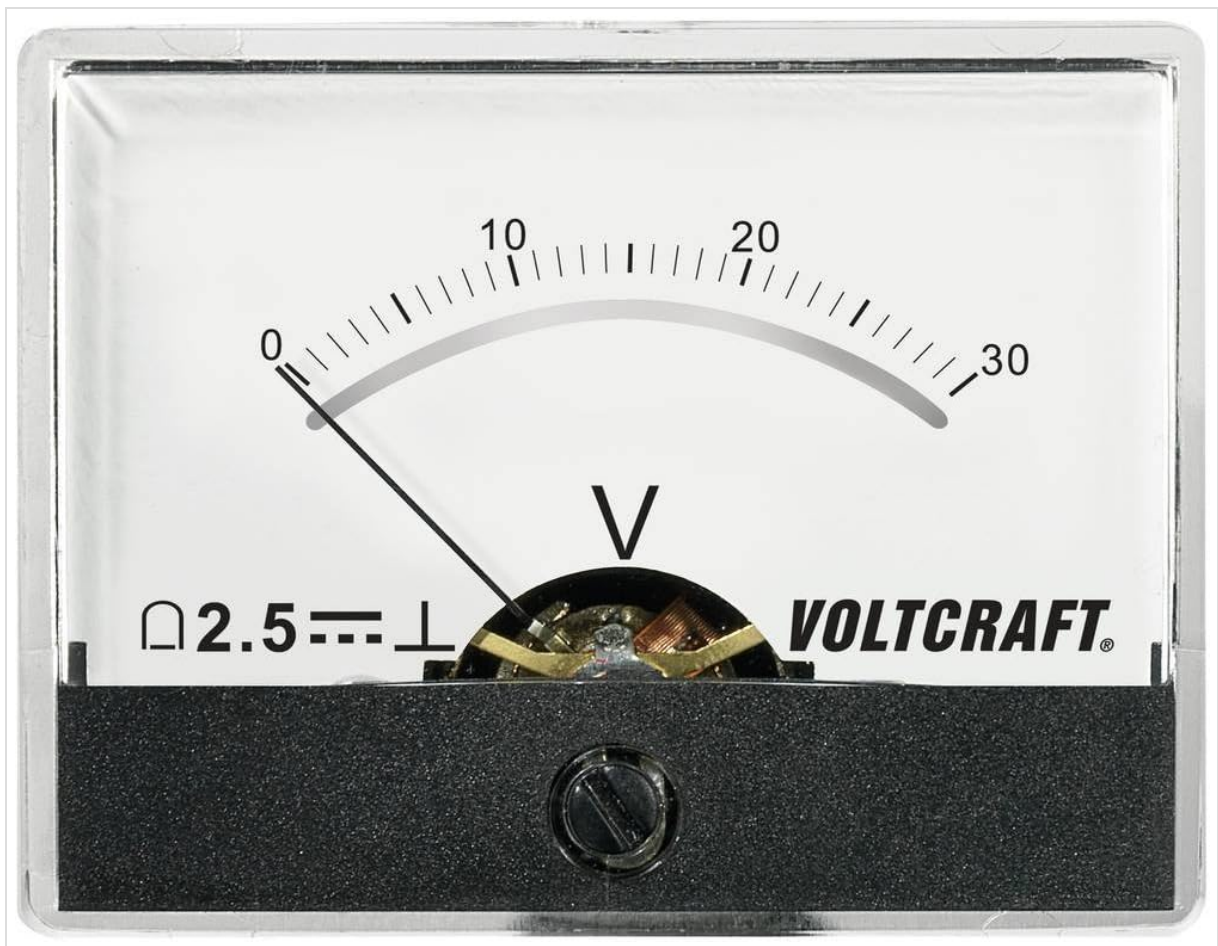


Figure 1: Front view of the VOLTcraft AM-60X46/30V/DC Panel Meter. This image shows the meter's analog display with a scale from 0 to 30 volts, marked with 'V' for voltage, and the VOLTcraft logo. The needle is currently at 0V.

Key Features:

- Analog display for direct voltage readings.
- Measurement range: 0-30V DC.
- Compact dimensions (60 x 46 mm).
- Durable construction.

4. INSTALLATION AND SETUP

Follow these steps for proper installation of your panel meter:

1. **Power Disconnection:** Ensure all power to the circuit where the meter will be installed is completely disconnected.
2. **Panel Cutout:** Create an appropriate cutout in your panel for the meter. Refer to the specifications section for exact dimensions (typically 60 x 46 mm).
3. **Mounting:** Insert the meter into the cutout from the front. Secure it from the rear using the provided mounting hardware (if applicable).
4. **Wiring:** Connect the meter to the DC voltage source you wish to measure. Observe correct polarity: connect the positive (+) terminal of the meter to the positive side of the circuit, and the negative (-) terminal to the negative side. Incorrect polarity may damage the meter.
5. **Verification:** Double-check all connections for security and correct polarity before restoring power.

5. OPERATING INSTRUCTIONS

Once installed and wired correctly, the VOLTcraft AM-60X46/30V/DC Panel Meter operates automatically:

- **Power On:** Restore power to the circuit. The meter's needle will move to indicate the measured DC voltage.
- **Reading the Display:** Read the voltage value directly from the scale indicated by the needle. The scale ranges from 0 to 30V.
- **Zero Adjustment:** If the needle does not rest precisely on zero when no voltage is applied, use the small screw located at the bottom center of the meter face to carefully adjust it. This adjustment should only be performed when the meter is disconnected from any voltage source.

6. MAINTENANCE

The VOLTcraft AM-60X46/30V/DC Panel Meter requires minimal maintenance:

- **Cleaning:** Clean the meter's front panel with a soft, dry cloth. Do not use abrasive cleaners or solvents.
- **Inspection:** Periodically inspect the wiring connections to ensure they are secure and free from corrosion.
- **Storage:** If storing the meter, keep it in a dry, dust-free environment within its specified operating temperature range.

7. TROUBLESHOOTING

Problem	Possible Cause	Solution
Meter needle does not move.	No power to the circuit; incorrect wiring; damaged meter.	Check power supply; verify wiring polarity and connections; replace meter if damaged.
Meter shows incorrect reading.	Incorrect wiring; meter not calibrated (rarely needed for analog meters); external interference.	Verify wiring; perform zero adjustment if needle is off at 0V; ensure no strong magnetic fields are nearby.
Needle is stuck or erratic.	Physical damage; internal fault.	Inspect for physical damage; if internal fault is suspected, replace the meter.

8. SPECIFICATIONS

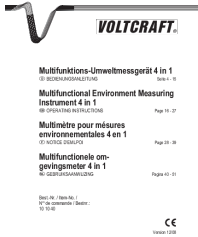

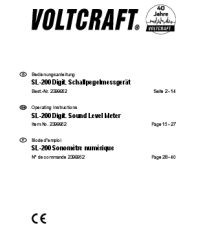

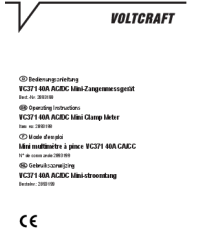
- **Brand:** VOLTcraft
- **Model Number:** AM-60X46/30V/DC
- **Measurement Type:** DC Voltage
- **Measurement Range:** 0 - 30 V/DC
- **Dimensions:** 60 x 46 mm (approximate panel cutout size)
- **Weight:** 44 Grams
- **Power Source:** Manual operation (passive measurement)
- **ASIN:** B00CS2GZ5C

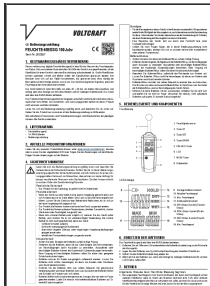
9. WARRANTY AND SUPPORT

For warranty information, technical support, or service inquiries, please refer to the documentation included with your purchase or contact VOLT CRAFT customer service directly. Keep your purchase receipt as proof of purchase.

Spare parts availability: 1 Year (as per product information).

Related Documents - AM-60X46/30V/DC

 <p>Multifunktions-Umweltmessgerät 4 in 1 DT 8820 Multifunctional Environment Measuring Instrument 4 in 1 DT 8820 Multimètre pour mesures environnementales 4 en 1 DT 8820 Multifunctionale omgevingsmeter 4 in 1 DT 8820</p> <p>Seite 11-27 Page 11-27 Page 11-27 Page 11-27</p> <p>CE</p>	<p>Voltcraft DT 8820 Multifunctional Environment Measuring Instrument 4 in 1 User Manual</p> <p>Comprehensive user manual for the Voltcraft DT 8820, a 4-in-1 multifunctional environment measuring instrument. Covers operation, features, safety, and specifications for measuring light intensity, humidity, sound level, and temperature.</p>
 <p>Bedienungsanleitung VC121 PV Solarpanel-Messgerät VC121 Operating Instructions VC121 PV Solar Panel Meter VC121 Manuel d'instructions VC121 pour panneaux solaires photovoltaïques VC121 Instrucciones de uso VC121 PV Solarpanel-Messgerät VC121</p> <p>Seite 1-10 Page 1-10 Page 1-10 Page 1-10</p> <p>CE</p>	<p>VOLT CRAFT VC121 PV Solarpanel-Messgerät Bedienungsanleitung</p> <p>Umfassende Bedienungsanleitung für das VOLT CRAFT VC121 PV Solarpanel-Messgerät. Enthält Informationen zur bestimmungsgemäßen Verwendung, Sicherheitshinweisen, Produktübersicht, Messverfahren und technische Daten für Solarpanel-Tests.</p>
 <p>Bedienungsanleitung SL-200 Schallpegelmessgerät SL-200 Operating Instructions SL-200 Sound Level Meter SL-200 Manuel d'instructions SL-200 pour mesure du son SL-200 Instrucciones de uso SL-200 Sonómetro ambiental SL-200</p> <p>Seite 1-14 Page 1-14 Page 11-27 Page 20-41</p> <p>CE</p>	<p>VOLT CRAFT SL-200 Schallpegelmessgerät Bedienungsanleitung Präzise Schallpegelmessung</p> <p>Umfassende Bedienungsanleitung für das VOLT CRAFT SL-200 Schallpegelmessgerät. Erfahren Sie alles über Funktionen, sichere Handhabung, Wartung und technische Spezifikationen für genaue Schallpegelmessungen.</p>
 <p>Bedienungsanleitung SEM6000 Bluetooth Energy Consumption Meter SEM6000 Operating Instructions SEM6000 Bluetooth Energy Consumption Meter SEM6000 Manuel d'instructions SEM6000 pour consommation d'énergie SEM6000 Instrucciones de uso SEM6000 medidor de consumo de energía SEM6000</p> <p>Seite 1-15 Page 1-15 Page 1-15 Page 1-15</p> <p>CE</p>	<p>Voltcraft SEM6000 Bluetooth Energy Consumption Meter - Operating Instructions</p> <p>Comprehensive operating instructions for the Voltcraft SEM6000 Bluetooth energy consumption meter. Covers intended use, safety precautions, connection, operation, maintenance, technical specifications, and disposal.</p>
 <p>Bedienungsanleitung VC371 40A AC/DC Mini Clamp Meter VC371 Operating Instructions VC371 40A AC/DC Mini Clamp Meter VC371 Manuel d'instructions VC371 40A AC/DC Mini Clamp Meter VC371 Instrucciones de uso VC371 40A AC/DC Mini Clamp Meter VC371</p> <p>Seite 1-10 Page 1-10 Page 1-10 Page 1-10</p> <p>CE</p>	<p>VOLT CRAFT VC371 40A AC/DC Mini Clamp Meter Operating Instructions</p> <p>This document provides comprehensive operating instructions and safety guidelines for the VOLT CRAFT VC371 40A AC/DC Mini Clamp Meter. It details product features, measurement procedures for AC/DC current and voltage, resistance, capacitance, and includes troubleshooting and technical specifications.</p>



[VOLT CRAFT MF-100 Moisture Meter User Manual and Technical Specifications](#)

Detailed operating instructions, safety guidelines, technical specifications, and disposal information for the VOLT CRAFT MF-100 moisture meter. Learn how to accurately measure moisture levels in various building materials.