

## Schneider Electric QOM2225VH

# Instruction Manual: Square D QOM2225VH Main Circuit Breaker

Model: QOM2225VH | Brand: Schneider Electric

## 1. INTRODUCTION

This manual provides essential information for the safe and effective installation, operation, and maintenance of the Square D QOM2225VH 225-Amp QOM2 Frame Size Main Circuit Breaker. This double-pole main breaker is designed for overload and short-circuit protection within your electrical system. It is compatible with QO and Homeline load centers, CSED devices, and NQOD panel boards rated for 225 amps.

Please read this manual thoroughly before attempting any installation or operation. Retain this manual for future reference.

## 2. SAFETY INFORMATION

**WARNING: Risk of Electric Shock or Fire. Improper installation or maintenance can result in serious injury or death. This product must be installed and serviced by qualified electrical personnel only.**

- Always disconnect power at the main service panel before working on electrical equipment.
- Use appropriate personal protective equipment (PPE), including insulated gloves and eye protection.
- Verify all connections are secure and properly torqued according to manufacturer specifications.
- Ensure the circuit breaker is compatible with your load center and electrical system voltage and amperage ratings.
- Do not bypass or modify the circuit breaker's protective features.
- This unit is rated for 120/240 VAC and 22,000 AIR. Ensure your system's requirements align with these specifications.

## 3. PRODUCT OVERVIEW

The Square D QOM2225VH is a 225-Amp QOM2 frame size main circuit breaker designed for robust electrical protection. Key features include:

- 225 Amp current rating.
- 22,000 Amperes Interrupting Rating (AIR).
- Compatible with QO and Homeline Load Centers.
- Accepts aluminum or copper #4 - 300 AWG feeder wire.
- UL Listed and ANSI Certified for safety and performance.
- Designed for 120/240 VAC systems.



Figure 3.1: Front view of the QOM2225VH Main Circuit Breaker, showing the 225 Amp rating and terminal connections.

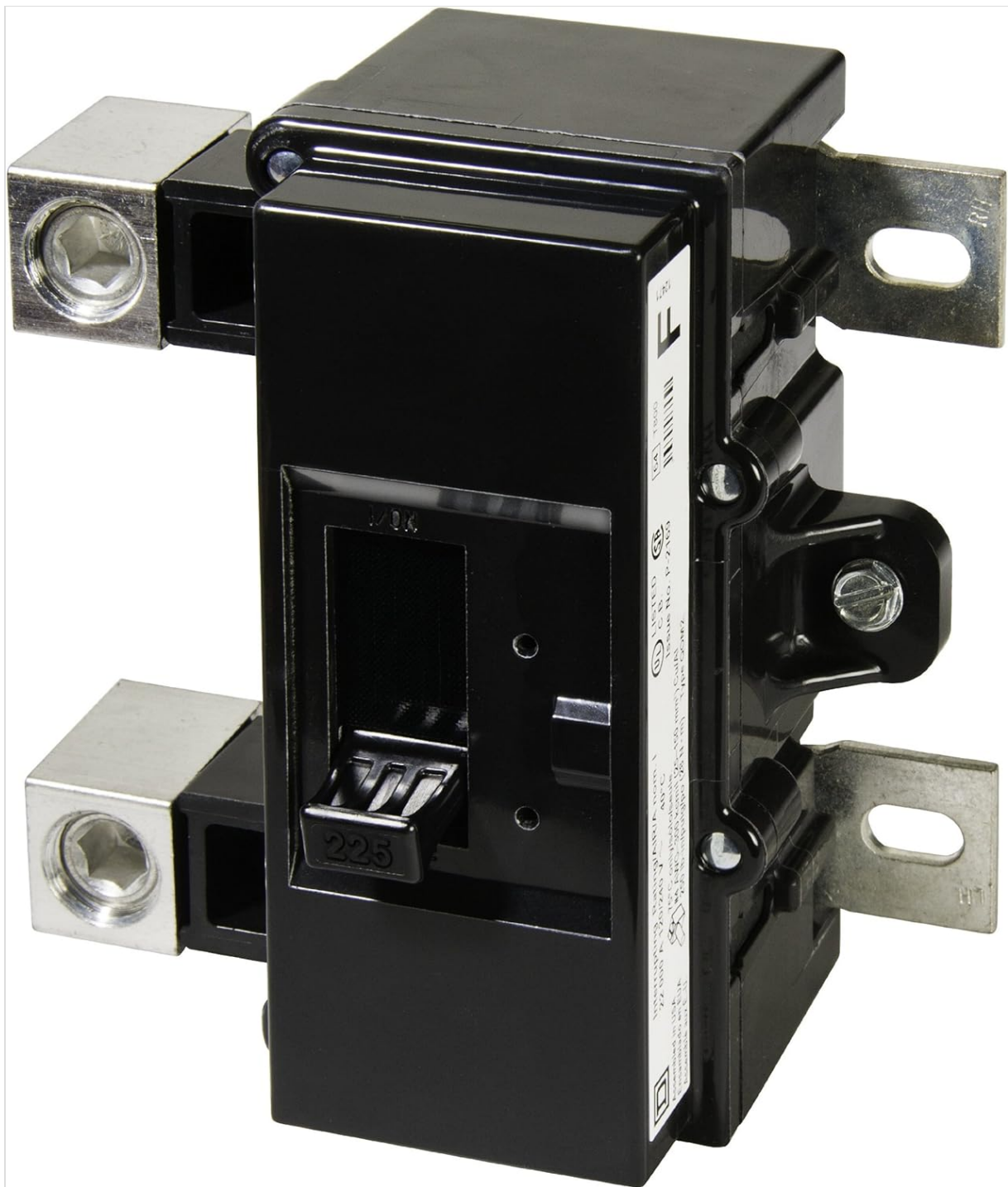


Figure 3.2: Side view of the QOM2225VH Main Circuit Breaker, illustrating the mounting points and overall dimensions.

## 4. SETUP AND INSTALLATION

Installation of the QOM2225VH circuit breaker should only be performed by a qualified electrician in accordance with all local and national electrical codes.

1. **Preparation:** Ensure the main power supply to the load center is completely disconnected and verified de-energized using a voltage tester.
2. **Load Center Compatibility:** Confirm that your QO or Homeline load center is rated for 225 amps and is compatible with QOM2 frame size main breakers.
3. **Mounting:** Position the QOM2225VH breaker into the designated main breaker slot within the load center. Ensure it seats firmly and correctly.
4. **Wiring:** Connect the incoming feeder wires (aluminum or copper #4 - 300 AWG) to the appropriate terminals on the breaker. Ensure proper polarity and secure all connections by tightening terminal

screws to the torque specifications provided by Schneider Electric (refer to the load center's manual for specific torque values).

5. **Grounding and Neutral:** Ensure all grounding and neutral connections within the load center are correctly made and secured.
6. **Enclosure Closure:** Once all connections are verified, carefully close the load center cover.
7. **Power Restoration:** Restore power to the main service panel.
8. **Testing:** Verify proper operation of the electrical system.

## 5. OPERATING INSTRUCTIONS

The QOM2225VH main circuit breaker functions automatically to protect your electrical system from overloads and short circuits. It is designed to trip (turn off) when an electrical fault occurs, interrupting the flow of current to prevent damage to wiring and appliances, and to mitigate fire hazards.

- **Normal Operation:** In normal conditions, the breaker remains in the 'ON' position, allowing current to flow.
- **Tripped State:** If an overload or short circuit occurs, the breaker will automatically move to the 'TRIPPED' (or center) position.
- **Resetting the Breaker:** To reset a tripped breaker, first move the handle firmly to the 'OFF' position, then push it to the 'ON' position. Before resetting, identify and resolve the cause of the trip (e.g., overloaded circuit, short circuit). If the breaker trips repeatedly, consult a qualified electrician.

## 6. MAINTENANCE

The Square D QOM2225VH circuit breaker requires minimal maintenance. However, periodic inspection by a qualified electrician is recommended to ensure continued safe and reliable operation.

- **Annual Inspection:** Have a qualified electrician inspect the breaker and its connections annually for signs of wear, corrosion, or loose connections.
- **Dust and Debris:** Ensure the area around the breaker within the load center is free from dust and debris, which can impede proper heat dissipation.
- **Avoid Obstruction:** Do not obstruct the breaker's handle or the ventilation openings of the load center.
- **Cleaning:** If cleaning is necessary, ensure power is disconnected and use a dry, lint-free cloth. Do not use liquid cleaners.

## 7. TROUBLESHOOTING

This section addresses common issues you might encounter with your circuit breaker.

Problem	Possible Cause	Solution
Breaker trips frequently	Overloaded circuit, short circuit, faulty appliance, or damaged wiring.	Reduce load on the circuit, unplug appliances, inspect for damaged cords. If problem persists, consult a qualified electrician.
Breaker will not reset	Persistent fault (short circuit), internal breaker damage.	Ensure the handle is pushed fully to 'OFF' before attempting to reset to 'ON'. If it still won't reset, do not force it. Contact a qualified electrician.

Problem	Possible Cause	Solution
No power to load center	Main breaker tripped, issue with utility power, or upstream electrical problem.	Check if the main breaker is tripped. Verify utility power. If unsure, contact your utility provider or a qualified electrician.

## 8. SPECIFICATIONS

Technical specifications for the Square D QOM2225VH Main Circuit Breaker:

Attribute	Value
Brand	Schneider Electric
Model Number	QOM2225VH
Current Rating	225 Amps
Voltage Rating	120/240 VAC
Amperage Capacity	225 Amps
Interrupting Rating (AIR)	22,000 AIR
Number Of Poles	2
Circuit Breaker Type	Standard
Mounting Type	Panel Mount
Material	Copper (terminals)
Color	Black
Product Dimensions	6.4 x 5.5 x 4.3 inches
Item Weight	0.01 ounces
Country of Origin	USA
UPC	785901004073

## 9. WARRANTY AND SUPPORT

**Warranty:** The Square D QOM2225VH Main Circuit Breaker comes with a Limited Lifetime Warranty from Schneider Electric. Please refer to the official Schneider Electric warranty documentation for full terms and conditions.

**Customer Support:** For technical assistance, product inquiries, or warranty claims, please contact Schneider Electric customer support. Contact information can typically be found on the official Schneider Electric website or product packaging.

It is recommended to have your product model number (QOM2225VH) and any relevant purchase information ready when contacting support.

