

## ARREGUI C9246-EUR

# ARREGUI C9246-EUR Cash Box with Euro Tray Instruction Manual

Model: **C9246-EUR** | Brand: **ARREGUI**

## 1. INTRODUCTION

This manual provides instructions for the safe and efficient use of your ARREGUI C9246-EUR Cash Box. Please read this manual thoroughly before operating the product and retain it for future reference.

## 2. PRODUCT OVERVIEW

The ARREGUI C9246-EUR is a durable steel cash box designed for secure storage and organization of cash. It features a specialized Euro coin tray and multiple compartments for banknotes.

### Key Features:

- **Material:** Painted steel construction for durability.
- **Coin Tray:** Multi-functional Euro coin tray with numerical marks for easy counting.
- **Banknote Compartments:** Three compartments for organizing banknotes.
- **Locking Mechanism:** Key-operated lock for security (supplied with 2 keys).
- **Portability:** Integrated nickel-plated steel handle for easy transport.
- **Coin Stabilization:** Foam mattress in the lid prevents coins from shifting during transport.



*An open ARREGUI C9246-EUR cash box, showing the grey Euro coin tray filled with various denominations of coins, and three compartments below holding Euro banknotes. The interior lid has a black foam lining.*

### 3. PACKAGE CONTENTS

---

Verify that all items are present in the package:

- ARREGUI C9246-EUR Cash Box
- Euro Coin Tray
- Set of 2 Keys



*A closed ARREGUI C9246-EUR cash box in graphite grey, featuring a top handle and a keyhole on the front. The ARREGUI logo is visible on the lid.*

## 4. SETUP

---

### 4.1 Unpacking

1. Carefully remove the cash box and its components from the packaging.
2. Inspect the cash box for any signs of damage. If damaged, contact customer support.

### 4.2 Initial Key Use

1. Locate the two keys provided with your cash box.
2. Insert one key into the lock on the front of the cash box.
3. Turn the key clockwise to unlock and open the lid.
4. Keep one key in a safe, separate location as a spare.



*A graphite grey ARREGUI C9246-EUR cash box, closed, with two keys inserted into the front lock. The box is placed on a dark surface.*

## 5. OPERATING INSTRUCTIONS

---

### 5.1 Opening the Cash Box

1. Insert the key into the lock.
2. Turn the key clockwise to unlock.
3. Lift the lid. The coin tray will automatically tilt upwards for easy access.





*An open ARREGUI C9246-EUR cash box, showing the grey coin tray tilted upwards, revealing the empty banknote compartments below. The interior lid has a black foam lining.*

## 5.2 Using the Coin Tray

The coin tray is designed to organize Euro coins. Each slot is marked with the coin denomination and numerical indicators to assist in counting the total amount.

1. Place coins into their respective slots (e.g., 1 cent, 2 cents, 5 cents, etc.).
2. The numerical marks indicate the quantity of coins and the total value for each denomination.



*A close-up view of the grey Euro coin tray from the ARREGUI C9246-EUR cash box, showing individual slots for different coin denominations (e.g., 1 cent, 2 cents, 5 cents, 10 cents, 20 cents, 50 cents, 1 Euro, 2 Euro) with numerical markings for quantity and value.*

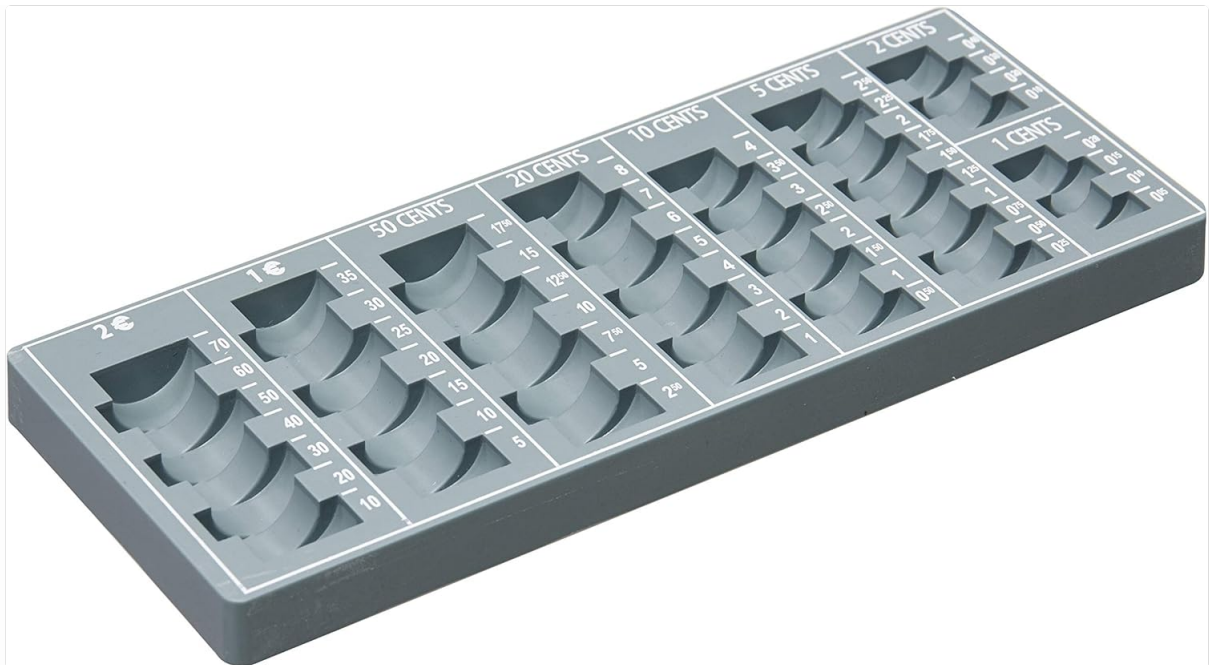
### **5.3 Using the Banknote Compartments**

Beneath the coin tray, there are three compartments for storing banknotes. The coin tray tilts to provide clear access to these compartments.

1. Lift the coin tray slightly if needed to access the banknote compartments.
2. Organize banknotes into the three available sections.







*A graphite grey ARREGUI C9246-EUR cash box, closed, showing the top handle and the keyhole. The ARREGUI logo is visible on the lid.*

## 6. MAINTENANCE

---

### 6.1 Cleaning

To clean the cash box, use a soft, damp cloth. Avoid abrasive cleaners or solvents, as these may damage the finish.

### 6.2 Key Care

Keep the keys clean and dry. Do not force the key if it feels stiff; a small amount of graphite lubricant can be applied to the lock mechanism if necessary.

## 7. TROUBLESHOOTING

---

### 7.1 Key Not Turning

- Ensure the key is fully inserted into the lock.
- Check for any obstructions in the keyhole.
- Try the spare key.
- Apply a small amount of graphite lubricant to the keyhole.

### 7.2 Lid Not Closing Properly

- Ensure the coin tray is correctly positioned and not obstructed.
- Check that no items inside the box are preventing the lid from closing.



## 8. SPECIFICATIONS

Feature	Detail
Model	C9246-EUR
Brand	ARREGUI
Material	Alloy Steel
Color	Graphite Grey
Dimensions (L x W x H)	11.81" x 9.45" x 3.54" (30 cm x 24 cm x 9 cm)
Weight	1.25 pounds (approx. 0.57 kg)
Lock Type	Key Lock
Capacity	0.7 Liters
Special Feature	Portable, Euro Coin Tray
Included Components	Cash box, Euro coin tray, 2 keys



*The ARREGUI C9246-EUR cash box, open and displaying its contents, placed on a dark table in a modern room setting.*

## 9. WARRANTY AND SUPPORT

---

ARREGUI products are manufactured to high-quality standards. For warranty information or technical support, please refer to the official ARREGUI website or contact your local distributor. Keep your purchase receipt as proof of purchase.