



[Manuals.plus](#) /

> [Nirvana Futons](#) /

> Nirvana Futons Eastridge Queen Size Futon Set Instruction Manual NF-ERDG-DSNR-QN-SET-207

## Nirvana Futons NF-ERDG-DSNR-QN-SET-207

# Nirvana Futons Eastridge Queen Size Futon Set Instruction Manual

Model: NF-ERDG-DSNR-QN-SET-207

## IMPORTANT SAFETY INSTRUCTIONS

---

Please read and understand all instructions before assembly and use. Keep this manual for future reference.

- Pillows are not included with this futon set.
- Supervise children and pets to avoid entrapment risks, especially during conversion between sofa, lounger, and bed positions.
- Do not use 360-degree imagery for product assembly or safety guidance as it may not represent the actual product configuration or components.
- Ensure all hardware is securely tightened before use. Periodically check and re-tighten hardware as needed.
- Do not exceed the maximum weight limit of 550 pounds.

## PRODUCT OVERVIEW

---

The Nirvana Futons Eastridge Futon Set is a versatile furniture piece designed for comfort and functionality. It features a solid hardwood frame that converts into three positions: sofa, lounger, and queen-size bed. The set includes an 8-inch thick premium futon mattress with a Dakota cover, providing medium to firm support.

### Key Features:

- 100% solid hardwood futon frame with finished seat and back decks.
- Three-position frame easily converts into a queen size bed, lounger, and sofa.
- Functional arms that can be propped up to serve as side table trays.
- 8-inch thick futon mattress made in the USA, featuring multi-layer polycotton batting and a high-density foam core.
- Tufted premium designer cover (Dakota Cover) to minimize lumping and shifting of mattress contents.



*Image 1: The Eastridge Futon Set configured as a sofa with one side table extended.*

## **PACKAGE CONTENTS**

---

Your Nirvana Futons Eastridge Futon Set will arrive in multiple packages, which may be delivered at separate times. Please ensure all components are present before beginning assembly.

### **Included Components:**

- Futon Frame (disassembled)
- 8-inch Futon Mattress with Dakota Cover
- All necessary Hardware for assembly

## **SETUP AND ASSEMBLY**

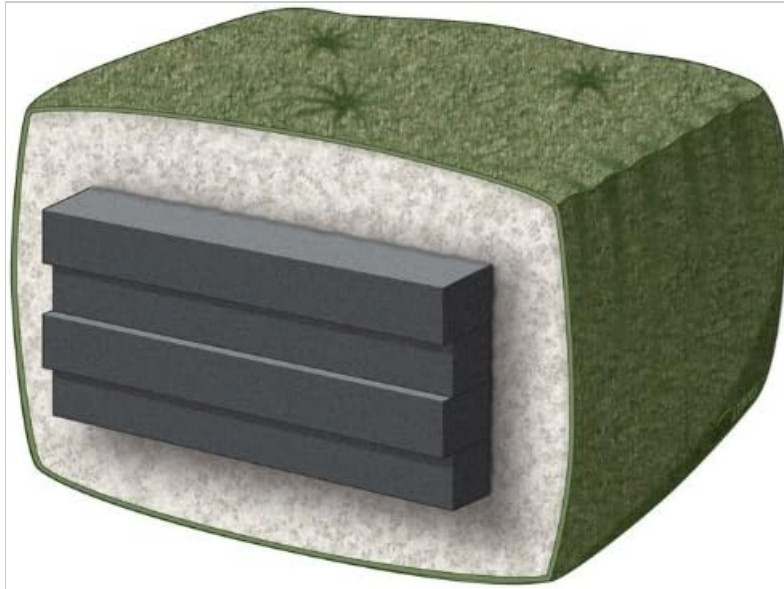
---

Assembly is required for the Nirvana Futons Eastridge Futon Set. Detailed assembly instructions are included within one of the packages. Please follow these instructions carefully, step-by-step, to ensure proper and safe assembly.

## Before You Begin:

- Clear a spacious area for assembly.
- Unpack all components and verify against the parts list in the included instructions.
- Gather any necessary tools not included (e.g., screwdriver, wrench). The product specifications indicate that not all assembly tools are included.
- It is recommended to have two people for assembly.

Once the frame is assembled, place the futon mattress onto the frame. The mattress is designed to fit the queen-size frame.



*Image 2: Illustration of the futon mattress construction, highlighting the foam core and polycotton batting.*

## OPERATING INSTRUCTIONS

---

The Eastridge Futon Set offers three functional positions: sofa, lounger, and bed. Follow these steps to convert your futon:

### Converting to Sofa Position:

1. Ensure the backrest is upright and locked into the sofa position.
2. The seat deck should be flat and horizontal.

### Converting to Lounger Position:

1. From the sofa position, gently lift the front edge of the seat deck.
2. Push the seat deck slightly forward, then allow the backrest to recline to an angled position.
3. Adjust until the frame locks into the desired lounger angle.

### Converting to Bed Position:

1. From the lounger position, lift the front edge of the seat deck again.
2. Push the seat deck further forward until the backrest fully reclines to a flat, horizontal position, creating a queen-size bed surface.
3. Ensure the frame is fully extended and stable before use as a bed.

### Using the Side Table Trays:

The futon frame features functional arms that can be propped up to create convenient side table trays. Simply lift the armrest section and secure it in the upright position to use it as a tray. Lower it back down when not in use.

## MAINTENANCE AND CARE

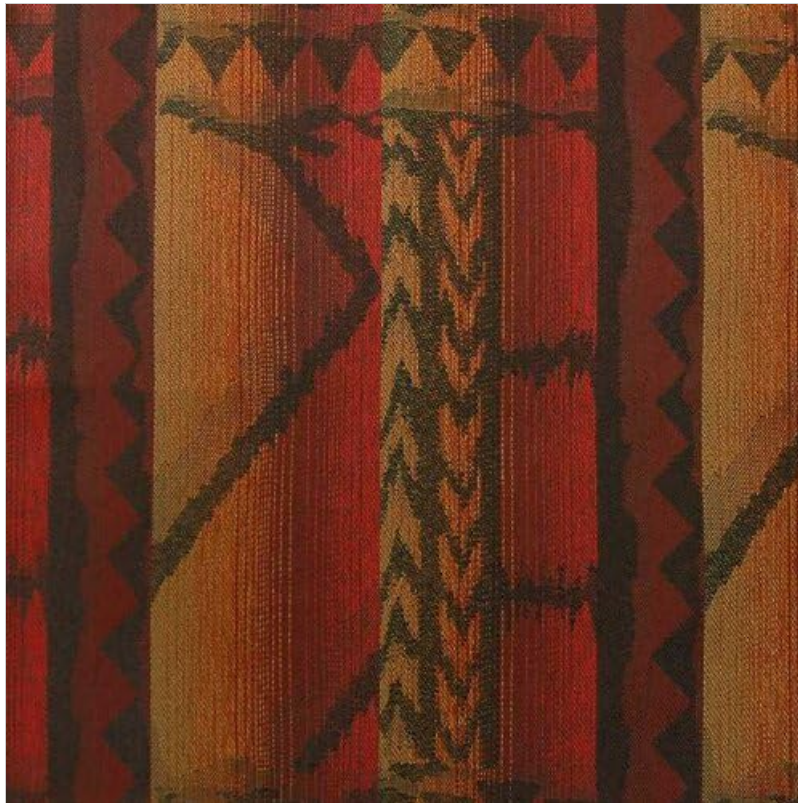
---

### Frame Care:

- Wipe the solid hardwood frame with a soft, damp cloth. Avoid harsh chemicals or abrasive cleaners.
- Periodically check all bolts and screws and tighten them as necessary to maintain stability.
- Keep the futon away from direct sunlight and extreme temperature changes to prevent wood warping or fading.

### Mattress Care:

- Rotate and flip the futon mattress regularly to ensure even wear and maintain its shape and comfort.
- Spot clean the Dakota cover with a mild detergent and a damp cloth. Test in an inconspicuous area first.
- Avoid saturating the mattress with water. Allow to air dry completely.
- The tufted design helps minimize lumping; however, occasional fluffing may be beneficial.



*Image 3: Detail of the Dakota Cover fabric pattern.*

## TROUBLESHOOTING

---

This section addresses common issues you might encounter with your futon set.

### Difficulty Converting Positions:

- **Check for Obstructions:** Ensure no objects are blocking the frame's movement.
- **Verify Assembly:** Confirm all hardware is securely tightened and the frame was assembled according to instructions. Loose bolts can affect mechanism function.
- **Even Pressure:** Apply even pressure when lifting and pushing the seat deck. Avoid forcing the mechanism.

## Squeaking Noises:

- **Tighten Hardware:** Squeaking often indicates loose bolts. Re-tighten all assembly hardware.
- **Lubrication:** A small amount of silicone-based lubricant can be applied to moving metal parts if squeaking persists, ensuring not to get it on wood or fabric.

## Mattress Lumping/Unevenness:

- **Rotate and Flip:** Regularly rotating and flipping the mattress helps distribute wear and prevent permanent indentations.
- **Fluffing:** Gently fluff the mattress by hand to redistribute the polycotton batting and foam core.

## SPECIFICATIONS

<b>Brand:</b>	Nirvana Futons
<b>Model Number:</b>	NF-ERDG-DSNR-QN-SET-207
<b>Type:</b>	Futon Set (Frame & Mattress)
<b>Size:</b>	Queen
<b>Frame Material:</b>	100% Solid Hardwood
<b>Mattress Thickness:</b>	8 inches
<b>Mattress Fill Material:</b>	Polycotton Batting, High-Density Foam Core
<b>Mattress Cover:</b>	Dakota Cover (Designer Tufted)
<b>Product Dimensions (Sofa):</b>	38"D x 86.5"W x 36.75"H
<b>Seat Depth:</b>	21 inches
<b>Seat Height:</b>	21 inches
<b>Arm Height:</b>	23 inches
<b>Weight Limit:</b>	550 Pounds
<b>Seating Capacity:</b>	3
<b>Assembly Required:</b>	Yes
<b>Included Components:</b>	Frame, Mattress, Hardware
<b>UPC:</b>	799599021212

## WARRANTY INFORMATION

The Nirvana Futons Eastridge Futon Set is backed by an Exclusive 5-Year Limited Manufacturer's Warranty. This warranty covers defects in materials and workmanship under normal use. Please retain your proof of purchase for warranty claims.

For specific details regarding warranty coverage, limitations, and how to file a claim, please refer to the warranty documentation included with your product or contact Nirvana Futons customer support.

## CUSTOMER SUPPORT

---

If you have any questions, require assistance with assembly, or need to report a missing or damaged part, please contact Nirvana Futons customer support. Have your model number (NF-ERDG-DSNR-QN-SET-207) and proof of purchase ready when contacting support.

*Specific contact information (phone number, email, website) is typically provided in separate documentation or on the manufacturer's official website.*