

[Manuals.plus](#) /

› [Nirvana Futons](#) /

› Nirvana Futons Stanford Queen Futon Set Instruction Manual

Nirvana Futons Stanford

Nirvana Futons Stanford Queen Futon Set Instruction Manual

Model: Stanford | Brand: Nirvana Futons

PRODUCT OVERVIEW

The Nirvana Futons Stanford Queen Futon Set offers a versatile and comfortable seating and sleeping solution. This set includes a durable solid hardwood frame and an 8-inch thick futon mattress, designed to easily convert between sofa, lounger, and bed positions. Crafted with quality materials, it provides a medium to firm support for optimal comfort.



Image: The Nirvana Futons Stanford Queen Futon Set in its sofa configuration, featuring a solid wood frame and a khaki-colored mattress.

Key Features:

- 100% solid hardwood futon frame with finished slat seat and back decks.
- Multi-positional design converts into a sofa, lounger, or futon bed.
- Includes an 8-inch solid covered tufted futon mattress, made in the USA.
- Mattress features multi-layer poly-cotton and four layers of high-density foam for medium to firm support.
- Designed for easy transportation, arriving in three separate boxes (arm, body, mattress).

IMPORTANT SAFETY INFORMATION

Please read and understand all safety warnings before assembly and use. Failure to follow these instructions may result in injury or damage to the product.

- Assembly and transportation may involve sharp edges and heavy components. Exercise caution.
- Keep children and pets away from the product during assembly and when converting it to a bed to prevent entrapment risks.

- Always follow the assembly instructions carefully to ensure proper and safe setup.
- Ensure all fasteners are securely tightened before use. Periodically check and re-tighten as necessary.
- Do not exceed the maximum weight limit of 550 pounds.

SETUP AND ASSEMBLY

The Stanford Futon Set requires assembly. It arrives in three separate boxes: one for the arms, one for the body, and one for the mattress. These boxes may arrive at different times. Please ensure you have all components before beginning assembly.

Before You Begin:

- Unpack all components and verify against the parts list (refer to the separate assembly guide included in your packaging).
- Clear a spacious area for assembly.
- It is recommended to have two people for assembly due to the size and weight of some components.
- Tools required for assembly are typically included, but a Phillips head screwdriver may be useful.

Assembly Steps:

Detailed assembly instructions with diagrams are provided in a separate guide within your product packaging. Please refer to that guide for step-by-step instructions. Key steps generally include:

1. Attach the arms to the main frame body.
2. Secure the back and seat decks.
3. Place the futon mattress onto the assembled frame.

Note: The mattress may require 24-48 hours to fully expand and decompress after unpacking.

OPERATING INSTRUCTIONS: CONVERTING POSITIONS

The Stanford Futon Set features a three-position mechanism, allowing it to function as a sofa, a lounger, or a full bed. Conversion is designed to be straightforward, though it may require two people for ease of movement.

1. Sofa Position:



Lounge Position

Image: The futon in its upright sofa position, ideal for seating.

In the sofa position, the backrest is upright, providing comfortable seating. Ensure the frame is securely locked in this position before use.

2. Lounger Position:



Bed Position

Image: The futon adjusted to a reclined lounger position for relaxed seating.

To convert to the lounger position, gently lift the seat frame slightly and push the backrest down to a reclined angle. The mechanism will click into place at the designated lounger setting. This position is suitable for lounging or reading.

3. Bed Position:



Shown with optional chair and accessories. 

Image: The futon fully flattened into a queen-size bed.

To convert to the bed position, lift the seat frame until the backrest fully releases and lays flat. The futon will then be in a flat, queen-size sleeping configuration. To return to the sofa position, lift the seat frame again until the backrest clicks into the upright position.

Always ensure the futon is fully locked into your desired position before sitting or lying on it.

MATTRESS INFORMATION

The included 8-inch futon mattress is designed for comfort and durability, offering medium to firm support. It is constructed with multiple layers of poly-cotton and four layers of high-density foam.



Image: An illustration depicting the internal construction of the futon mattress, highlighting its multi-layer foam and poly-cotton composition.

CertiPUR-US Certified Foam:

The high-density foam used in this mattress is CertiPUR-US certified. This certification ensures the foam meets rigorous standards for content, emissions, and durability, and is made without ozone depleters, PBDE flame retardants, mercury, lead, other heavy metals, formaldehyde, or phthalates regulated by the CPSC.

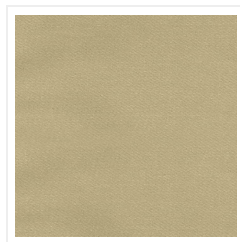


Image: The CertiPUR-US logo, indicating certified flexible polyurethane foam.

Mattress Cover:

The mattress features an attached solid twill or microfiber tufted cover, which helps prevent shifting and lumping of the internal contents, maintaining the mattress's shape and comfort over time. The current

product variant includes a Twill Khaki cover.

CARE AND MAINTENANCE

Frame Care:

- Wipe the hardwood frame with a damp cloth to clean. Avoid harsh chemicals or abrasive cleaners.
- Periodically check all bolts and fasteners and tighten them as needed to maintain stability.
- Avoid exposing the frame to direct sunlight or extreme temperature changes, which can cause wood to warp or crack.

Mattress Care:

- Spot clean the mattress cover with a mild detergent and damp cloth. Do not remove the cover for washing, as it is attached.
- Allow the mattress to air out regularly to maintain freshness.
- Rotate the mattress periodically to ensure even wear and prolong its lifespan.
- Protect the mattress from spills and stains by using a futon mattress protector (not included).

TROUBLESHOOTING

This section addresses common issues you might encounter with your futon set.

Issue: Futon is difficult to convert between positions.

Solution: Ensure the mechanism is not obstructed. Conversion often requires a slight lift of the seat frame to release the locking pins. It may be easier with two people, especially when new, as the mechanism can be stiff initially. Apply gentle, even pressure.

Issue: Mattress feels too firm or has an odor.

Solution: New mattresses, especially those shipped compressed, may take 24-48 hours to fully expand and reach their intended firmness. Any "new mattress" odor should dissipate within a few days in a well-ventilated room. If the issue persists, consider adding a mattress topper for additional softness.

Issue: Frame feels unstable or wobbly.

Solution: Recheck all assembly bolts and fasteners. Ensure they are securely tightened. Over time, fasteners can loosen with use, so periodic tightening is recommended. If the issue persists, review the assembly instructions to ensure all parts were installed correctly.

PRODUCT SPECIFICATIONS



Image: A diagram illustrating the key dimensions of the futon set in sofa position: 38"D x 84.5"W x 36.75"H.

Brand	Nirvana Futons
Model Name	Stanford
Size	Queen
Color	Twill Khaki Cover
Product Dimensions (Sofa)	38"D x 84.5"W x 36.75"H
Seat Depth	21 inches
Seat Height	21 Inches
Arm Height	22.25 Inches
Weight Limit	550 Pounds
Seating Capacity	2
Frame Material	100% Solid Hardwood
Mattress Thickness	8 inches
Mattress Firmness	Medium to Firm
Mattress Fill Material	Multi-layer Poly-cotton, High Density Foam
Assembly Required	Yes
UPC	799599020321
ASIN	B00CHV2TF4

WARRANTY AND SUPPORT

Manufacturer's Warranty:

- **Frame:** Exclusive 5-year limited manufacturer's warranty on the futon frame.
- **Mattress:** 4-year limited manufacturer's warranty on the mattress.

For detailed terms and conditions of the warranty, please refer to the warranty card included with your product or contact Nirvana Futons customer service.

Customer Support:

If you have any questions regarding assembly, operation, maintenance, or warranty claims, please contact Nirvana Futons customer support through their official website or the retailer where the product was purchased.