

Manuals+

[Q & A](#) | [Deep Search](#) | [Upload](#)

manuals.plus /

- › [CTEK](#) /
- › [CTEK MXS 5.0 Battery Charger User Manual](#)

CTEK MXS 5.0 (40-206)

CTEK MXS 5.0 Battery Charger User Manual

Model: MXS 5.0 (40-206)

1. INTRODUCTION

The CTEK MXS 5.0 is a fully automatic 12V 4.3 Amp battery charger and maintainer designed for a wide range of lead-acid batteries. It features a unique 8-step charging process, including desulphation and reconditioning functions, and built-in temperature compensation for optimal performance in various conditions. This manual provides essential information for safe and effective use of your MXS 5.0 charger.



Image: The CTEK MXS 5.0 charger with its included battery clamps, showcasing its compact design and clear indicator lights.

2. SAFETY INFORMATION

Always read and understand all safety warnings and instructions before using the charger. Failure to do so may result in electric shock, fire, or serious injury.

- Ensure proper ventilation during charging.
- Do not charge frozen batteries.
- Avoid open flames or sparks near the battery.
- Wear eye protection and gloves when handling batteries.
- The charger is designed to protect vehicle electronics; however, always ensure correct polarity connection.
- Keep out of reach of children.

3. WHAT'S IN THE BOX

Upon unpacking, verify that all components are present:

- CTEK - 40-206 MXS 5.0 Fully Automatic 4.3 amp Battery Charger
- CTEK Comfort Connect Clamps
- CTEK Comfort Connect 13/32" Eyelets
- Storage Drawstring Bag
- Battery Charger User Guide
- 5-Year Limited Warranty Information



Image: An illustration showing the CTEK MXS 5.0 charger along with its included accessories: battery clamps and eyelet connectors.

4. SETUP AND CONNECTION

Follow these steps to set up and connect your CTEK MXS 5.0 charger:

1. **Prepare the Battery:** Ensure the battery terminals are clean and free from corrosion. If the battery has vent caps, ensure they are securely in place.

2. Connect to Battery:

- For battery clamps: Connect the red (+) clamp to the positive battery terminal and the black (-) clamp to the negative battery terminal or a good chassis ground point away from the battery.
- For eyelet connectors: Permanently attach the eyelets to the battery terminals (red to positive, black to negative) and then connect the charger's output cable to the eyelet connector.

The charger is reverse polarity protected, but always double-check connections.

3. **Connect to Power Outlet:** Plug the charger's power cord into a suitable wall socket (110-120V AC). The charger will perform a self-test.

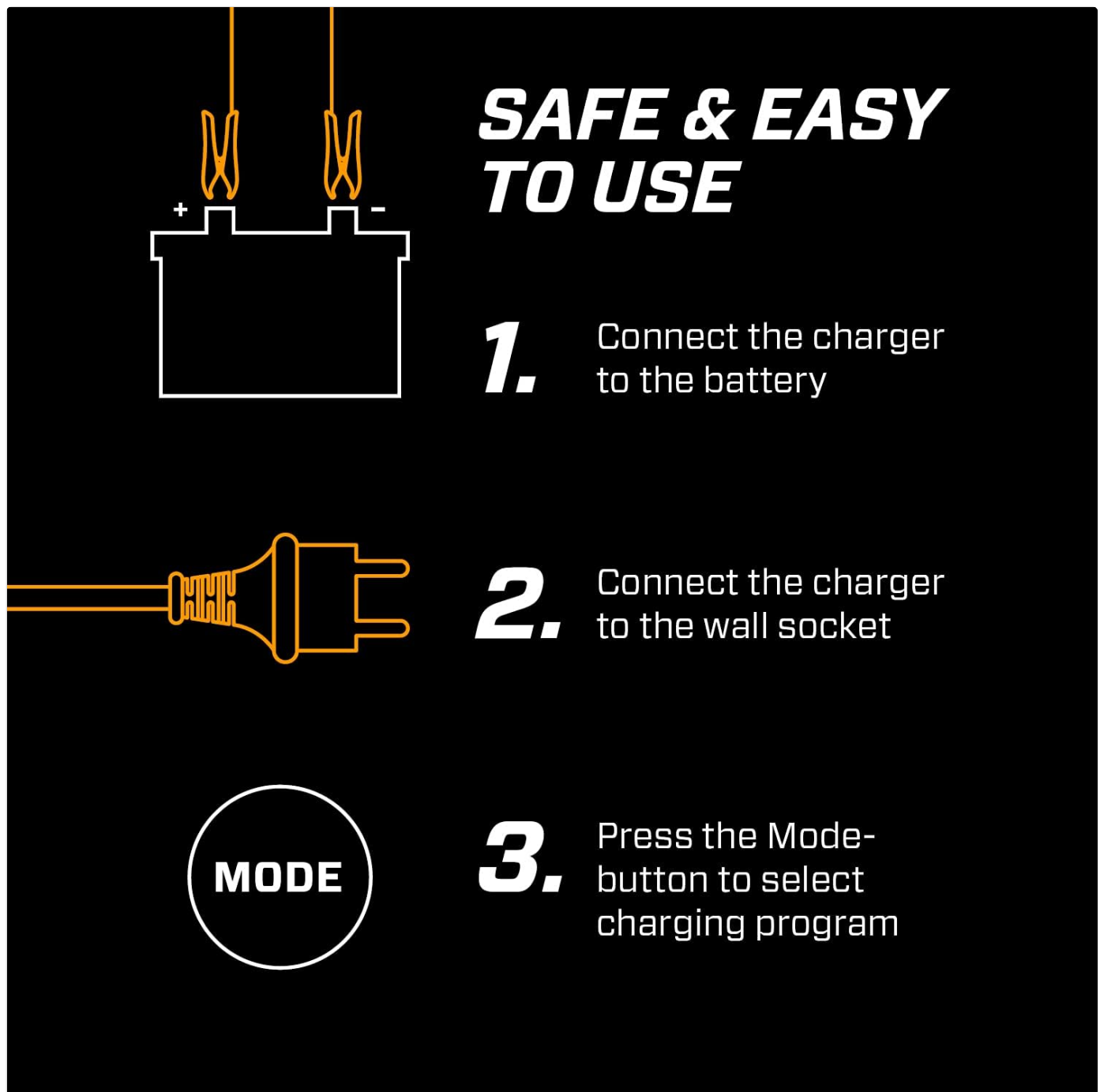


Image: A visual guide demonstrating the three simple steps for connecting the charger: 1. Connect to battery, 2. Connect to wall socket, 3. Press Mode button.

5. OPERATING INSTRUCTIONS

The MXS 5.0 features an 8-step fully automatic charging cycle. Use the MODE button to select the appropriate program.

5.1 Charging Programs

| Icon | Program | Description |
|--------|------------------|--|
| | Motorcycle Mode | For smaller batteries (1.2-14 Ah), such as those found in motorcycles, ATVs, and lawnmowers. |
| | Car Mode | For standard car batteries (14-110 Ah), including most automotive, marine, and RV batteries. |
| AGM | AGM Mode | Optimized charging for AGM batteries. Select this mode if your battery is an AGM type. |
| RECOND | Recondition Mode | Used to restore deeply discharged and stratified batteries. This mode is typically used after a full charge cycle. |

5.2 8-Step Charging Cycle

The MXS 5.0 automatically progresses through these steps:

1. **STEP 1: DESULPHATION** - Removes sulphate from the lead plates to restore battery capacity.
2. **STEP 2: SOFT START** - Tests if the battery can accept charge. Prevents charging a defective battery.
3. **STEP 3: BULK** - Charges with maximum current until approximately 80% capacity.
4. **STEP 4: ABSORPTION** - Charges with decreasing current to 100% capacity.
5. **STEP 5: ANALYSE** - Tests if the battery can hold charge. If not, the battery may be faulty.
6. **STEP 6: RECOND (Optional)** - Reconditioning mode for deeply discharged batteries.
7. **STEP 7: FLOAT** - Maintains the battery at maximum voltage by providing a constant voltage charge.
8. **STEP 8: PULSE** - Maintains the battery at 95-100% capacity. The charger monitors the battery voltage and gives a pulse when needed.

RECONDITION. RESTORE. MAINTAIN.

8-STEP, FULLY AUTOMATIC CHARGING CYCLE



Image: An illustration depicting the internal process of the CTEK MXS 5.0 charger, showing how it reconditions, restores, and maintains a battery through its 8-step fully automatic charging cycle.

FOR ALL TYPES OF LEAD-ACID, 12V BATTERIES



SUPPORT FOR THE FOLLOWING BATTERY TYPES:

- AGM
- MF
- WET
- EFB
- CA/CA
- GEL

Image: Various lead-acid 12V batteries, including AGM, MF, EFB, CA/CA, WET, and GEL types, indicating the broad compatibility of the CTEK MXS 5.0 charger.

6. MAINTENANCE AND CARE

The CTEK MXS 5.0 is designed for minimal maintenance. However, following these guidelines will ensure its longevity and optimal performance:

- **Cleaning:** Wipe the charger with a soft, damp cloth. Do not use harsh chemicals or abrasive cleaners.
- **Storage:** Store the charger in a cool, dry place when not in use. Ensure cables are not kinked or damaged.
- **Cable Inspection:** Regularly inspect the charging cables and connectors for any signs of wear, cuts, or damage. Replace if necessary.
- **Temperature Compensation:** The built-in temperature compensation ensures efficient charging in extreme cold or hot weather conditions, requiring no user intervention.

IMPROVED CHARGING

IN ALL WEATHER TYPES



PROTECT VEHICLE ELECTRONICS:

- non-sparking
- reverse polarity protected
- temperature sensor for maximum performance
- short-circuit, splash, & dust-proof

Image: The CTEK MXS 5.0 charger being splashed with water, highlighting its splash and dustproof design and suitability for all weather types.

7. TROUBLESHOOTING

If you encounter issues with your MXS 5.0 charger, refer to the following common problems and solutions:

| Problem | Possible Cause | Solution |
|-------------------------|---|---|
| Charger does not start | No power from wall socket; incorrect battery connection; battery voltage too low. | Check wall socket; ensure correct polarity and secure connection; if battery voltage is extremely low, it may be unrecoverable. |
| Charging takes too long | Battery is very discharged; battery capacity is larger than expected; battery is old/damaged. | Allow more time; ensure correct program selected; consider battery replacement if it doesn't hold charge. |

| Problem | Possible Cause | Solution |
|---|--|---|
| Charger indicates error (e.g., red light) | Reverse polarity; short circuit; internal fault. | Disconnect and reconnect with correct polarity; check for short circuits; if error persists, contact support. |

For further assistance, refer to the full user guide or contact CTEK customer support.

8. SPECIFICATIONS

| Feature | Detail |
|------------------------|---|
| Model | MXS 5.0 BATTERY CHARGER (Item model number: 40-206) |
| Voltage | 12 Volts |
| Output Current | 4.3 Amp |
| Battery Capacity | 1.2-110 Ah (charging), up to 160 Ah (maintenance) |
| Charging Steps | 8-step, fully automatic |
| Battery Types | All types of 12V lead-acid batteries (WET, MF, Ca/Ca, AGM, GEL) |
| Dimensions (L x W x H) | 11.02 x 5.91 x 2.36 inches |
| Weight | 1.3 pounds |
| Protection Features | Splash and dustproof, non-sparking, reverse polarity protected, short-circuit proof, built-in temperature compensation. |


9. WARRANTY AND SUPPORT


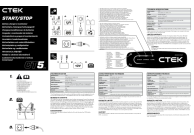
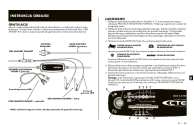

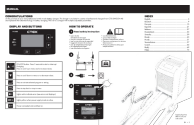
The CTEK MXS 5.0 Battery Charger comes with a **5-year limited warranty** from the date of purchase. This warranty covers defects in material and workmanship under normal use.

For warranty claims, technical support, or further inquiries, please refer to the official CTEK website or contact their customer service directly. Keep your proof of purchase for warranty validation.

Official User Manual (PDF): [Download PDF](#)

Related Documents - MXS 5.0 (40-206)

| | |
|---|--|
|  | CTEK MXS 7.0 Battery Charger User Manual Comprehensive user manual for the CTEK MXS 7.0 battery charger, detailing its features, charging programs, technical specifications, and safety guidelines for all types of 12V lead-acid batteries. |
|---|--|

| | |
|---|--|
|  | CTEK MXS 5.0 Battery Charger User Manual Comprehensive user manual for the CTEK MXS 5.0 battery charger, covering safety instructions, operating procedures, charging programs, technical specifications, and warranty information. |
|  | CTEK Start/Stop Battery Charger and Maintainer User Guide Comprehensive guide to the CTEK Start/Stop battery charger and maintainer, covering technical specifications, usage instructions, and warranty information. Supports various 12V lead-acid batteries including AGM and EFB. |
|  | Instrukcja Obsługi CTEK MXS 5.0 Test & Charge Szczegółowa instrukcja obsługi dla ładowarki CTEK MXS 5.0 Test & Charge, obejmująca tryby ładowania, procedury testowe, wskazówki bezpieczeństwa, specyfikacje techniczne oraz informacje o gwarancji. |
|  | CTEK PRO60/PRO120 Battery Charger User Manual Comprehensive user manual for the CTEK PRO60 and PRO120 professional battery chargers, detailing operation, charging modes, technical specifications, and troubleshooting. |
|  | CTEK PRO60 Professional Battery Charger Manual A comprehensive guide to operating and understanding the CTEK PRO60 professional switch-mode battery charger, covering its features, charging programs for lead-acid and lithium batteries, technical specifications, and troubleshooting. |

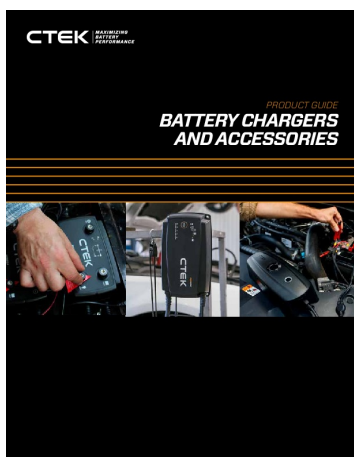
Documents - CTEK – MXS 5.0 (40-206)

[\[pdf\]](#) Guide Accessories

BATTERY CHARGERS AND ACCESSORIES CTEKMUS 7002 PART NO 56 353 The MUS is the perfect all around 12V charger Due to its power and robust features it a great for high CTEK productguide low NA ENctek storage C01E4DACD17EAB6B46B73F54B7B13249DBDF1662DEFD88B8B70FEBFCC742F938 387817b94064445a988916eab15ce397 media d96c24c42873461fb9183dbd20bd3eb7 CTEK EN srsltid AfmBOoqp aR6wDZcZ bsqWvtCrE2n8fLi aduW5M035Bvoc7x1yv8bTr CTEKBATTERY Pro Series chargers offer safe simple use effective solutions workshop battery support charging needs Page 16 Professional CTEK ENCTEK aduW5M035Bvoc7x1yv8bTrctek AfmBOoqDacN jffaKe8aGBuQPhPzkCu82d6OnTbXQmBRG9YgYI9TaWxM Professional CHARGING FOR BATTERIES FROM 40 300AH WHILE YOU RE ON THE MOVE DUAL INPUT SOLAR ALTERNATOR IN PARALLEL SMART COMPATIBLE BATTERY CTEK jffaKe8aGBuQPhPzkCu82d6OnTbXQmBRG9YgYI9TaWxMctek AfmBOopZDdCb6L2lZPBvtY9K18jGwoV1lBB4BL4C3aFTWfV37lHDVnYn BATTERY Tests if holding charge Batteries that cannot hold may need replacement STEP 6 RECOND When selected this step provides a CTEK AfmBOopZDdCb6L2lZPBvtY9K18jGwoV1lBB4BL4C3aFTWfV37lHDVnYnctek AfmBOoRiGU9C7QjP3i4ngPzpgTIYDEOWD 7yfTIPw5kA5NfwUyRild2 a Made from super tough fibreglass you simply unfold connect your It s time start thinking about RED means the CTEK 7yfTIPw5kA5NfwUyRild2ctek AfmBOoodmZsQ3qW0zpwWZWrl5nH7RCsxu07nzx6ps76TJGiXa4KbLYl the Made AfmBOoodmZsQ3qW0zpwWZWrl5nH7RCsxu07nzx6ps76TJGiXa4KbLYlctek AfmBOopVrtQWcGlpg ekfZK3LMdjjY51XLjhmgzbtR5X7gALukduh3Os ekfZK3LMdjjY51XLjhmgzbtR5X7gALukduh3Oscetek AfmBOoroCD cjYJRbM NG5DEKCKRHwGeM3pPuXYLxCgqwOMkFb2WO xP xPctek AfmBOorg 87xvxae7iXg1dL9PQD5H0ax6aLzTx7U3Xmaeyms399X6D5f 87xvxae7iXg1dL9PQD5H0ax6aLzTx7U3Xmaeyms399X6D5fctek AfmBOoqZHMddtX6lX tJiyrgHcYp4X7qp2jn6vZIU2zzSxPTw2zfAij1 tJiyrgHcYp4X7qp2jn6vZIU2zzSxPTw2zfAij1ctek AfmBOopVV37oyjgRlXPI5JvdUTGiDp6o9tFQ02jTQSPo V3LH1AOueu V3LH1AOueuctek AfmBOorO2HCB1NyU8FDXO9 8DHIBRy44qRdrnYv2mkOTU7L03GfalXTc

8DHIBRy44qRdrnYv2mkOTU7L03GfalXTcctek
AfmBOoqvt5Ai7okDDhGIlbs9b7H63MMxdGMVBi12AoGptPK 06OI7AYo 06OI7AYoctek
AfmBOoqPYkPwc5XcOZL4 hzttfEZCvI51xYDoyYn1akUPJRlEkQ8RYaZ
hzttfEZCvI51xYDoyYn1akUPJRlEkQ8RYaZctek AfmBOoqO0GdQ9KfPtSNz9RXh3PcL6YH
7nXXyoWTvmCrlzsjOwKQ6ruY 7nXXyoWTvmCrlzsjOwKQ6ruYctek AfmBOorLfuXikvFTXL0ydSy EZ
vuG81q3T9oHST4S6whxEwiHcbVYe vuG81q3T9oHST4S6whxEwiHcbVYectek
AfmBOoqRoTGVUAGdNHWDxofmtPPEKU W71BFZ8Hl1mXbdHF IEh4cgBd IEh4cgBdctek
AfmBOopQIPRFOYjgPHDLRcaFWRIaVa67KjRtzccuv0IM 0BRgCjaclAA
AfmBOorgDICjh4YVdKKyC8OAdVf7ruYAJouvHKK8FsX ZxrHApC7vYhhctek 0BRgCjaclAActek
AfmBOoq5XnbqRuz tJ3VIsk81XqH3g4JnjHgmOpYZ JiTIHljjL6C80 JiTIHljjL6C80ctek
AfmBOopO2agEAVPdrLQxxkme9HIQ57 nl5anDmB8Hk0bt9j7eLur450b
nl5anDmB8Hk0bt9j7eLur450bctek AfmBOoq39cGwTIFxXODNVH1R4K
SnWsNr6BZXf0fW3jUJXM7aaK3zZOX ENv1ctek SnWsNr6BZXf0fW3jUJXM7aaK3zZOXctek
AfmBOoq9PkJ RcJkX mrJq9L6zyMz XkSvM L 8WqWQHbEaGdgYRmeDJ ENv1CTEK
8WqWQHbEaGdgYRmeDJctek AfmBOorV2ZPNgo08VuEVU0pXXIm95KCSyIVJob
scbYHVamVIDI8gVdF AfmBOoo5dW3c2Zel27R3Yy2aazcNuPF8mPHs8NMsEhQdfSkJopxjbbTvctek
AfmBOoqXA92AlgGIOadtdXJ wTO jrh4YraLuw9yWjJPDpaTsSiD dSctek
AfmBOorhFUatStSJE11bB12mYeEzEWJi7DnU1WLpgT8 zu4fPnxenAysctek scbYHVamVIDI8gVdFctek
AfmBOopq3iPmzITz7mdlWW4rFpywWz1RgAZKJbrbvJbCXPmIUgbe zvi zvictek
AfmBOorxVHd7zGEphjXKpnjHL1a05VbibYpzhxqc9DSh wwJFE18EZ3k wwJFE18EZ3kctek
AfmBOoqbdsNYJaFy5QdLV XWhqC F1CoTxMfVpbVmTYMYkqYy3tmsCYv
F1CoTxMfVpbVmTYMYkqYy3tmsCYvctek
AfmBOop3IO99XGEiGswplBxg3KxIKrZYc34OUvGFsF1EanPioj8qt6wR
AfmBOop3IO99XGEiGswplBxg3KxIKrZYc34OUvGFsF1EanPioj8qt6wRctek
AfmBOoqD9izWXGiyj1YXoklh Tc8PN83uBK8XaV5EtdKlqQTiQ2qrfMh
Tc8PN83uBK8XaV5EtdKlqQTiQ2qrfMhctek AfmBOoqeUvkT19kWcCq
nmCeT8MFR8fcZn1ryMfD4yglTmqPbZmEJv04l nmCeT8MFR8fcZn1ryMfD4yglTmqPbZmEJv04lctek
AfmBOopW gQxtkS7yj7rN1BfJfgB7m3LOTItDBTYz23Zf2RibmQpsdRV
gQxtkS7yj7rN1BfJfgB7m3LOTItDBTYz23Zf2RibmQpsdRVctek AfmBOopN5TZjSc
YxNcBU8UxToBttOgDa60GshLW7klb9fvkWRCopWJN
YxNcBU8UxToBttOgDa60GshLW7klb9fvkWRCopWJNctek AfmBOoqdRcqtetRcaY2xnFFd54RKi
2yNj3IA5rRqnJQjPQF3Ej41RW the products 339 255 206 959 958 926 Practical of output clips cables
Open frame CTEK AfmBOorRu2yfJYpqCwURB4QFjz9Mw XoQ5JqwJUCXixGMZvRlgY uCActek
2yNj3IA5rRqnJQjPQF3Ej41RWctek AfmBOoqvAznV RLI Enf21XdnYSnCc20DU9MZanz
xfRtaf2hr4PpdZ3 xfRtaf2hr4PpdZ3ctek
AfmBOopS5QAIDRgDS2BYfMBNJYP3tGoSRn6jOIMTRCQtnddoqsxqBbTV
AfmBOopS5QAIDRgDS2BYfMBNJYP3tGoSRn6jOIMTRCQtnddoqsxqBbTVctek
AfmBOoqv0yhEzx7KINU6VEyLmHJbc9aJm3TTHEUETEr46H42X0YsV466
AfmBOoqv0yhEzx7KINU6VEyLmHJbc9aJm3TTHEUETEr46H42X0YsV466ctek AfmBOoqdBX
a3QNYPCFxdTCGXaZWwrsZBMDT6v0X0IWm qWnoHksZ7oy AfmBOopnhEJYI5uTAOBT
ibh9Y8UqSKYaOTT4sL8X z8tQBxka hlf5Yctek qWnoHksZ7oyctek AfmBOopRj4nmk0LQ6Zqr IGL TI17z0
YMHb fuCS5ZliNmV9FIO6zx9 fuCS5ZliNmV9FIO6zx9ctek AfmBOoolvLy
JPt91mIDUT7jUNMMLV4KgfQR7ozWMMb2nDRiKOES4tCf AfmBOooMO P3n3Z8
Fni7RmGvl8yeUGEP87X9jDlBEnWTwWEPlixy1obctek AfmBOopPWS HPsiB4nayXxPi 61SQcbDbPc
brFNBPNs3QKDtYEto tjctek JPt91mIDUT7jUNMMLV4KgfQR7ozWMMb2nDRiKOES4tCfctek
AfmBOorjvM 3mMFOUs77i0dZiN0E2ISJTfi05 fXvw5BRPSTK9sgB Nu
AfmBOoqJytiur38l3Ry8Wt3ByvFag31hdml19fYacrF9h tqRm5UNKgectek Nuctek
AfmBOoocUI4G5zbcWXgAvnbDLKtHzLlqfog D0YgkhGZzsYma76X5rg D0YgkhGZzsYma76X5rgctek
AfmBOorQ2E75PZHxt lJgfdBafR MX4z 0cUfhshlXevlnVctH5U2U9h 0cUfhshlXevlnVctH5U2U9hctek
AfmBOooDiPPgCjDjiyBkbLmjM2we sO8 bCjMy rbJckOC Xv sLuv v ||| ||| PRODUCT GUIDE BATTERY
CHARGERS AND ACCESSORIES CONTENTS EASY CHARGING 4 CONSUMER CHARGERS 5
PROFESSIONAL CHARGERS 14 INTEGRATED SOLUTIONS 18 ACCESSORIES 20 BATTERY

CHARGER GUIDE 25 EASY CHARGING STEP BY STEP CTEK Chargers maximize the life |||
PRODUCT GUIDE BATTERY CHARGERS AND ACCESSORIES CONTENTS EASY CHARGING 4
CONSUMER CHARGERS 5 PROFESSIONAL CHARGERS 14 INTEGRATED SOLUTIONS 18
ACCESSORIES 20 BATTERY CHARGER GUIDE 25 EASY CHARGING STEP BY STEP CTEK
Chargers maximize the life ||| PRODUCT GUIDE BATTERY CHARGERS AND ACCESSORIES
CONTENTS EASY CHARGING 4 CONSUMER CHARGERS 5 PROFESSIONAL CHARGERS 14
INTEGRATED SOLUTIONS 18 ACCESSORIES 20 BATTERY CHARGER GUIDE 25 EASY CHARGING
STEP BY STEP CTEK Chargers maximize the life ||| PRODUCT GUIDE BATTERY CHARGERS AND
ACCESSORIES CONTENTS EASY CHARGING 4 CONSUMER CHARGERS 5 PROFESSIONAL
CHARGERS 14 INTEGRATED SOLUTIONS 18 ACCESSORIES 20 BATTERY CHARGER GUIDE 25
EASY CHARGING STEP BY STEP CTEK Chargers maximize the life ||| PRODUCT GUIDE BATTERY
CHARGERS AND ACCESSORIES CONTENTS EASY CHARGING 4 CONSUMER CHARGERS 5
PROFESSIONAL CHARGERS 14 INTEGRATED SOLUTIONS 18 ACCESSORIES 20 BATTERY
CHARGER GUIDE 25 EASY CHARGING STEP BY STEP CTEK Chargers maximize the life |||
PRODUCT GUIDE BATTERY CHARGERS AND ACCESSORIES CONTENTS EASY CHARGING 4
CONSUMER CHARGERS 5 PROFESSIONAL CHARGERS 14 INTEGRATED SOLUTIONS 18
ACCESSORIES 20 BATTERY CHARGER GUIDE 25 EASY CHARGING STEP BY STEP CTEK
Chargers maximize the life ||| PRODUCT GUIDE BATTERY CHARGERS AND ACCESSORIES
CONTENTS EASY CHARGING 4 CONSUMER CHARGERS 5 PROFESSIONAL CHARGERS 14
INTEGRATED SOLUTIONS 18 ACCESSORIES 20 BATTERY CHARGER GUIDE 25 EASY CHARGING
STEP BY STEP CTEK Chargers maximize the life ||| PRODUCT GUIDE BATTERY CHARGERS AND
ACCESSORIES CONTENTS EASY CHARGING 4 CONSUMER CHARGERS 5 PROFESSIONAL
CHARGERS 14 INTEGRATED SOLUTIONS 18 ACCESSORIES 20 BATTERY CHARGER GUIDE 25
EASY CHARGING STEP BY STEP CTEK Chargers maximize the life ||| PRODUCT GUIDE BATTERY
CHARGERS AND ACCESSORIES CONTENTS EASY CHARGING 4 CONSUMER CHARGERS 5
PROFESSIONAL CHARGERS 14 INTEGRATED SOLUTIONS 18 ACCESSORIES 20 BATTERY
CHARGER GUIDE 25 EASY CHARGING STEP BY STEP CTEK Chargers maximize the life |||
PRODUCT GUIDE BATTERY CHARGERS AND ACCESSORIES CONTENTS EASY CHARGING 4
CONSUMER CHARGERS 5 PROFESSIONAL CHARGERS 14 INTEGRATED SOLUTIONS 18
ACCESSORIES 20 BATTERY CHARGER GUIDE 25 EASY CHARGING STEP BY STEP CTEK
Chargers maximize the life ||| PRODUCT GUIDE BATTERY CHARGERS AND ACCESSORIES
CONTENTS EASY CHARGING 4 CONSUMER CHARGERS 5 PROFESSIONAL CHARGERS 14
INTEGRATED SOLUTIONS 18 ACCESSORIES 20 BATTERY CHARGER GUIDE 25 EASY CHARGING
STEP BY STEP CTEK Chargers maximize the life ||| PRODUCT GUIDE BATTERY CHARGERS AND
ACCESSORIES CONTENTS EASY CHARGING 4 CONSUMER CHARGERS 5 PROFESSIONAL
CHARGERS 14 INTEGRATED SOLUTIONS 18 ACCESSORIES 20 BATTERY CHARGER GUIDE 25
EASY CHARGING STEP BY STEP CTEK Chargers maximize the life ||| PRODUCT GUIDE BATTERY
CHARGERS AND ACCESSORIES CONTENTS EASY CHARGING 4 CONSUMER CHARGERS 5
PROFESSIONAL CHARGERS 14 INTEGRATED SOLUTIONS 18 ACCESSORIES 20 BATTERY
CHARGER GUIDE 25 EASY CHARGING STEP BY STEP CTEK Chargers maximize the life |||
PRODUCT GUIDE BATTERY CHARGERS AND ACCESSORIES CONTENTS EASY CHARGING 4
CONSUMER CHARGERS 5 PROFESSIONAL CHARGERS 14 INTEGRATED SOLUTIONS 18
ACCESSORIES 20 BATTERY CHARGER GUIDE 25 EASY CHARGING STEP BY STEP CTEK
Chargers maximize the life ||| PRODUCT GUIDE BATTERY CHARGERS AND ACCESSORIES
CONTENTS EASY CHARGING 4 CONSUMER CHARGERS 5 PROFESSIONAL CHARGERS 14
INTEGRATED SOLUTIONS 18 ACCESSORIES 20 BATTERY CHARGER GUIDE 25 EASY CHARGING
STEP BY STEP CTEK Chargers maximize the life ||| PRODUCT GUIDE BATTERY CHARGERS AND
ACCESSORIES CONTENTS EASY CHARGING 4 CONSUMER CHARGERS 5 PROFESSIONAL
CHARGERS 14 INTEGRATED SOLUTIONS 18 ACCESSORIES 20 BATTERY CHARGER GUIDE 25
EASY CHARGING STEP BY STEP CTEK Chargers maximize the life ||| PRODUCT GUIDE BATTERY
CHARGERS AND ACCESSORIES CONTENTS EASY CHARGING 4 CONSUMER CHARGERS 5
PROFESSIONAL CHARGERS 14 INTEGRATED SOLUTIONS 18 ACCESSORIES 20 BATTERY

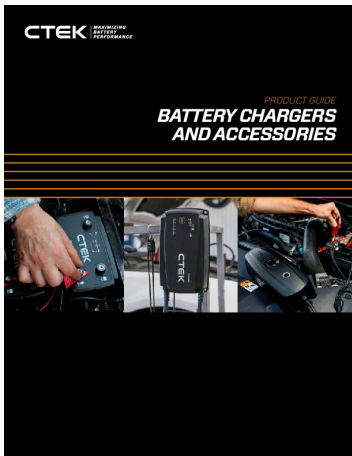


[illegible]

[illegible]

INTEGRATED SOLUTIONS 18 ACCESSORIES 20 BATTERY CHARGER GUIDE 25
EASY CHARGING STEP BY STEP CTEK Chargers maximize the life of your battery
through application of a se...

lang:en **score:34** filesize: 2.76 M page_count: 28 document date: 2022-12-06



[\[pdf\]](#) Guide Accessories

Product Guide Smarter Charger CA CTEK productguide low US EN e305c523 ce7c 4fae a343

33af608e65a6 v 1670416994 cdn shopify s files 1 0277 8877 1431 |||

PRODUCT GUIDE BATTERY CHARGERS AND ACCESSORIES CONTENTS EASY
CHARGING 4 CONSUMER CHARGERS 5 PROFESSIONAL CHARGERS 14
INTEGRATED SOLUTIONS 18 ACCESSORIES 20 BATTERY CHARGER GUIDE 25
EASY CHARGING STEP BY STEP CTEK Chargers maximize the life of your battery
through application of a se...

lang:en **score:30** filesize: 2.76 M page_count: 28 document date: 2022-12-06



[\[pdf\]](#) Guide Accessories

20023419A 57 098 Product Guide Brochure US Letter Print file 006 indd CTEK North America

Maximizing Battery Performance Chargers smartercharger product guide 11 cdn shopify s files 1 0117
5237 4372 |||

NORTH AMERICA PRODUCT GUIDE 2018 BATTERY CHARGERS AND
ACCESSORIES 20023419A, 57-098, Product Guide Brochure US, Letter, Print file
006.indd 1 2017-10-03 14:53:14 20023419A, 57-098, Product Guide Brochure US,
Letter, Print file 006.indd 2 2017-10-03 14:53:20 CONTENTS EASY CHARGING
CONSUMER C...

lang:en **score:17** filesize: 17.34 M page_count: 28 document date: 2019-04-02