



[Manuals.plus](#) /

› [Olympia](#) /

› Olympia Faucets P-3230 Three Handle Tub/Shower Set Instruction Manual

Olympia P-3230

Olympia Faucets P-3230 Three Handle Tub/Shower Set Instruction Manual

Model: P-3230 (Polished Chrome Finish)

1. INTRODUCTION

This manual provides detailed instructions for the installation, operation, maintenance, and troubleshooting of your Olympia Faucets P-3230 Three Handle Tub/Shower Set. Please read all instructions carefully before beginning installation or use to ensure proper function and safety. This product is part of the Olympia Elite Collection, designed for durability and aesthetic appeal.



Image 1.1: The Olympia Faucets P-3230 Three Handle Tub/Shower Set in Polished Chrome.

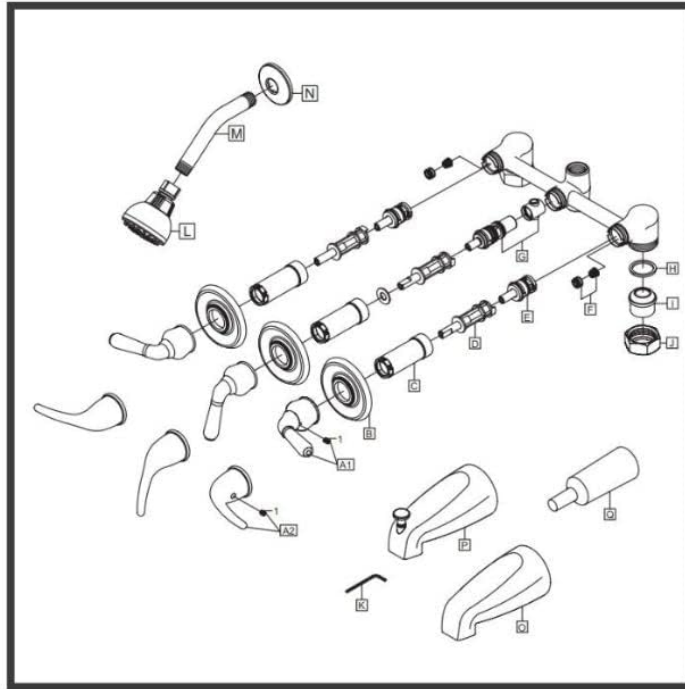
2. SAFETY INFORMATION

- Always turn off the main water supply before attempting any installation or repair.
- Wear appropriate personal protective equipment, such as safety glasses and gloves, during installation.
- Ensure all connections are secure and watertight to prevent leaks.
- Test water temperature carefully before use to avoid scalding.
- If you are unsure about any part of the installation process, consult a qualified plumber.

3. PACKAGE CONTENTS

Verify that all components are present before beginning installation. Refer to the exploded diagram below for part identification.

OLYMPIA™



Three Handle Tub/Shower Set

Image 3.1: Exploded view diagram showing all components of the P-3230 Tub/Shower Set.

Typical components include:

- Showerhead
- Shower Arm and Flange
- Hot Water Handle
- Cold Water Handle
- Diverter Handle
- Tub Spout
- Valve Body (8" cast brass)
- Mounting Hardware and Gaskets

4. SETUP AND INSTALLATION

Professional installation is recommended for optimal performance and to ensure compliance with local plumbing codes. The following steps provide a general overview of the installation process.

1. **Prepare the Installation Area:** Turn off the main water supply. Clear the work area and ensure you have all necessary tools.
2. **Install the Valve Body:** Mount the 8-inch cast brass valve body securely within the wall, ensuring it is level and at the correct depth for the finished wall surface. Connect the hot and cold water supply lines to the appropriate inlets on the valve body. Connect the shower outlet and tub spout outlet plumbing.
3. **Install the Tub Spout:** Attach the tub spout to its designated pipe extending from the wall. Ensure a tight, leak-free connection.
4. **Install the Shower Arm and Showerhead:** Thread the shower arm into the shower outlet in the wall. Apply plumber's tape to the threads for a watertight seal. Attach the showerhead to the shower arm.
5. **Install the Handles:** Place the escutcheons (trim plates) over the valve stems. Install the hot, cold, and diverter handles onto their respective stems, securing them with the provided screws.
6. **Test for Leaks:** Slowly turn on the main water supply and carefully check all connections for any signs of leakage. Address any leaks immediately.
7. **Final Adjustments:** Ensure all handles operate smoothly and the diverter functions correctly.



Image 4.1: The P-3230 Tub/Shower Set installed in a bathroom setting.

5. OPERATING INSTRUCTIONS

Your Olympia Faucets P-3230 features three distinct handles for precise control over water flow and temperature.

- **Hot Water Handle:** Typically located on the left. Turn counter-clockwise to increase hot water flow.
- **Cold Water Handle:** Typically located on the right. Turn counter-clockwise to increase cold water flow.
- **Diverter Handle:** Located in the center. Turn this handle to switch water flow between the tub spout and the showerhead.

To achieve your desired water temperature, adjust the hot and cold handles simultaneously. To switch from tub spout to showerhead, ensure water is flowing, then turn the center diverter handle.

6. MAINTENANCE

Proper care and maintenance will ensure the longevity and appearance of your tub/shower set.

- **Cleaning:** Clean the polished chrome finish regularly with a soft cloth and mild soap and water. Avoid abrasive cleaners, harsh chemicals, or scouring pads, as these can damage the finish.
- **Leak Checks:** Periodically inspect all visible connections for any signs of leaks. Tighten connections as needed, but do not overtighten.
- **Cartridge Replacement:** If you experience persistent dripping or difficulty controlling water temperature, the internal cartridges may need replacement. Consult a qualified plumber or Olympia Faucets customer support for guidance on obtaining and installing replacement cartridges.

7. TROUBLESHOOTING

Below are common issues and potential solutions for your tub/shower set.

Problem	Possible Cause	Solution
Low Water Pressure	Partially closed shut-off valves; clogged showerhead or aerator.	Ensure shut-off valves are fully open. Clean or replace showerhead/aerator.
Water Leaks from Handles	Loose packing nut; worn cartridge.	Tighten packing nut slightly. Replace the cartridge if tightening does not resolve the leak.
Water Leaks from Tub Spout/Showerhead	Loose connections; worn O-rings or seals.	Check and tighten connections. Replace O-rings or seals as necessary.
Difficulty Diverting Water	Worn diverter cartridge.	Replace the diverter cartridge.

If these solutions do not resolve the issue, please contact Olympia Faucets customer support or a qualified plumber.

8. SPECIFICATIONS

Feature	Detail
Brand	Olympia
Model Number	P-3230
Color	Polished Chrome
Material	Brass
Finish Type	Chrome
Number of Handles	3
Mounting Type	Wall Mount
Showerhead Size	57mm
Spout Reach	5.25 Inches
UPC	763439850614
Manufacturer	Olympia Faucets

9. WARRANTY AND SUPPORT

Your Olympia Faucets P-3230 Three Handle Tub/Shower Set is backed by a **Limited Lifetime Warranty**. This warranty covers defects in materials and workmanship under normal use and service.

For warranty claims, technical assistance, or to purchase replacement parts, please contact Olympia Faucets customer support. Keep your proof of purchase for warranty validation.

For more information, visit the [Olympia Faucets Store](#).