

EV RIDER Transport Plus

EV Rider Transport Plus Mobility Scooter User Manual

Model: Transport Plus

INTRODUCTION

This manual provides essential information for the safe and efficient operation, maintenance, and care of your EV Rider Transport Plus Manual Folding Scooter. Please read this manual thoroughly before using your scooter to ensure proper understanding of its features and functions. Retain this manual for future reference.

The EV Rider Transport Plus is a highly portable and easily foldable power mobility scooter designed for active travelers. It features a robust design, simple operation, and compact storage capabilities, making it ideal for both indoor and outdoor use.

SAFETY INFORMATION

Your safety is paramount. Always operate the scooter responsibly and adhere to all local traffic laws and regulations. Before each use, perform a quick check of the scooter's condition, including tires, battery level, and controls.

General Safety Guidelines:

- Always ensure the scooter is stable before mounting or dismounting.
- Do not exceed the maximum weight capacity of 250 lbs.
- Operate the scooter at a safe speed, especially in crowded areas or indoors. The top speed is 4 mph.
- Avoid sudden stops or turns that could lead to instability.
- Be aware of your surroundings and potential obstacles.
- Always use the key ignition to start and stop the scooter.
- Adjust the speed control dial to a comfortable and safe maximum speed for your environment.
- Ensure the battery is fully charged before extended use to avoid unexpected power loss.
- Do not operate the scooter under the influence of alcohol or medication that may impair your judgment.

Important Warning:

**WARNING: This product can expose you to chemicals including lead and lead components, which are known to the State of California to cause cancer or birth defects or other reproductive harm. For more information go to [www.p65warnings.ca.gov/](http://www.p65warnings.ca.gov/).**

PRODUCT OVERVIEW

The EV Rider Transport Plus is designed for convenience and mobility. Key features include:

- Manual folding mechanism for easy transport and storage.
- Lightweight design, weighing 46 lbs (without battery and seat) or 70 lbs (total).
- Powered by SLA (Sealed Lead Acid) batteries, making it airline safe.
- Powerful 270 Watt 4-pole motor.
- Articulated front end for enhanced stability.
- LED Headlight for improved visibility.
- Height-adjustable tiller.
- Key ignition and dual-hand two-way throttle control.
- Speed control dial for adjustable maximum speed.
- Range of 10 to 15 miles per full charge.
- Lighting package including front and rear lights.



Figure 1: Various configurations of the EV Rider Transport Plus, demonstrating its folding capabilities.



Figure 2: The EV Rider Transport Plus scooter in its fully unfolded, ready-to-ride configuration.



Figure 3: Detailed view of the scooter's control panel, including the key slot, battery charge indicator, and speed adjustment dial.



Figure 4: The compact size of the folded scooter, demonstrating how it fits easily into a car trunk for transport.

## SETUP AND ASSEMBLY

The EV Rider Transport Plus comes largely pre-assembled. Follow these steps to prepare your scooter for first use:

1. **Unpacking:** Carefully remove the scooter from its packaging. Retain packaging materials for potential future transport or storage.
2. **Unfolding:** The scooter is designed for easy unfolding. Locate the release levers (typically near the seat and tiller base) and gently extend the scooter until it locks into its fully unfolded position. Ensure all locking mechanisms are securely engaged before use.
3. **Tiller Adjustment:** Adjust the height of the tiller (handlebar) to a comfortable operating position using the height adjustment mechanism. Secure it firmly.
4. **Battery Installation/Connection:** Ensure the battery pack is correctly inserted and connected. The scooter uses Sealed Lead Acid (SLA) batteries.
5. **Initial Charging:** Before first use, fully charge the battery. Refer to the "Charging the Battery" section for detailed instructions.

## OPERATING INSTRUCTIONS

### Charging the Battery:

To charge the battery, connect the charger to the scooter's charging port and then plug the charger into a standard electrical outlet. The battery indicator on the control panel will show charging status. A full charge provides a range of 10 to 15 miles. Always charge in a well-ventilated area.

### Starting and Driving:

1. **Power On:** Insert the key into the ignition and turn it to the "ON" position. The battery indicator lights will illuminate.
2. **Speed Adjustment:** Use the speed control dial on the tiller to set your desired maximum speed. Start with a lower speed setting until you are comfortable with the scooter's operation.
3. **Throttle Control:** The scooter features dual-hand two-way throttle control. Gently push the throttle lever forward to move forward, and pull it backward to reverse. Release the throttle to engage the automatic brake.
4. **Steering:** Steer the scooter by turning the tiller in the desired direction.
5. **Headlight:** Activate the LED headlight for improved visibility, especially in low-light conditions.

### Folding for Transport:

The scooter is designed to fold easily for transport and storage. Locate the folding levers (refer to Figure 1 for visual guidance) and follow the reverse steps of unfolding. Ensure all parts are securely latched in the folded position before lifting or transporting. The total weight is 70 lbs, but it can be reduced to 46 lbs by removing the battery and seat.

## MAINTENANCE

Regular maintenance ensures the longevity and safe operation of your EV Rider Transport Plus scooter.

- **Battery Care:** Always keep the batteries fully charged, especially if storing the scooter for an extended period. Avoid completely draining the battery.
- **Cleaning:** Clean the scooter regularly with a damp cloth. Avoid using abrasive cleaners or direct water spray.
- **Tire Inspection:** Periodically check tire pressure and tread wear. Ensure tires are free from punctures or damage.
- **Fasteners:** Check all nuts, bolts, and fasteners regularly to ensure they are tight. Do not overtighten.
- **Storage:** Store the scooter in a dry, cool place away from direct sunlight and extreme temperatures.

## TROUBLESHOOTING

This section addresses common issues you might encounter with your scooter. For problems not listed here, please contact customer support.

| Problem                          | Possible Cause   | Solution  |
|----------------------------------|--|---|
| Scooter does not power on.       | Battery not charged, key not fully inserted/turned, loose battery connection.  | Charge the battery. Ensure key is fully inserted and turned to "ON". Check battery connections.                             |
| Reduced range or power.          | Low battery charge, aging battery, operating on inclines frequently.           | Fully charge the battery. Consider battery replacement if performance consistently degrades. Avoid prolonged uphill travel. |
| Scooter stops unexpectedly.      | Loose battery connection, battery box not fully secured (as per user reviews). | Ensure battery pack is firmly seated and connections are secure. Re-seat the battery box if it feels loose.                 |
| Unusual noises during operation. | Loose components, motor issue.   | Inspect for loose parts and tighten. If noise persists, contact customer support.   |

## SPECIFICATIONS

| Feature                       | Detail   |
|-------------------------------|--|
| Model                         | Transport Plus                                       |
| Brand                         | EV Rider   |
| Dimensions (Unfolded)         | 36"D x 24"W x 38"H (91.4 cm D x 61 cm W x 96.5 cm H) |
| Weight (without battery/seat) | 46 lbs (20.9 kg)                                     |
| Weight (total)                | 70 lbs (31.8 kg)                                     |
| Weight Capacity               | 250 lbs (113.4 kg)                                   |
| Motor                         | 270 Watt 4-pole                                      |
| Top Speed                     | 4 mph (6.4 km/h)                                     |
| Range per Charge              | 10-15 miles (16-24 km)                               |
| Batteries                     | Sealed Lead Acid (SLA), airline safe                 |
| Color                         | SeaFoam Blue   |
| Style                         | Manual Folding, Height Adjustable Tiller             |

## WARRANTY AND SUPPORT

### Warranty Information:

Specific warranty details for the EV Rider Transport Plus scooter are typically provided at the time of purchase or can be found on the manufacturer's official website. Please retain your proof of purchase for warranty claims. The warranty generally covers manufacturing defects in materials and workmanship under normal use.

### Customer Support:

For technical assistance, parts, or service inquiries, please contact EV Rider customer support. Refer to the contact information provided with your purchase documentation or visit the official EV Rider website for the most current support details. When contacting support, please have your scooter's model number (Transport Plus) and serial number (if applicable) ready to expedite assistance.



© 2024 EV Rider. All rights reserved.  
This manual is for informational purposes only. Specifications are subject to change without notice.

### Documents - EV RIDER – Transport Plus



[\[pdf\]](#) User Manual Owner's Manual Troubleshooting Guide Specifications Diagram  
ev rider tranSport EZ Folding scooter manual evrider transport plus mobility DOWNLOAD the EV RIDER Transport Plus MOBILITY SCOOTER C  
Rider Plus 24V 270W Foldable Electric Mobility Scooter eBikeJoy! 15837470539704130040 cdn shopify s files 1 1410 7944 |||  
USER MANUAL S19 TranSport Electrically powered scooter Class A EN 12184 EV Rider, LLC 6410 Arc Way - Suite  
33966 USA 1 CONTENTS 1. SAFETY INSTRUCTION.....3 2.  
ELECTROMAGNETIC INTER...  
lang:en score:32 filesize: 1020.45 K page\_count: 24 document date: 2019-01-28



[pdf] User Manual Troubleshooting Guide Specifications Diagram

Transport Plus Foldable Mobility Scooter User Manual EV Rider Scooters drive google file d 1Pln9rNFq3IHcBvmGIWm ODvAmwOlm yJ view us

**TRANSPORT PLUS S19 MANUAL** sales evriderscooters.com 800 471-8170 www.evriderscooters.com CONTENTS INSTRUCTION.....3 2. ELECTROMAGNETIC INTERFEREN

lang:en score:32 filesize: 750.65 K page\_count: 23 document date: 2024-09-08



[pdf] User Manual Troubleshooting Guide Specifications Diagram

EV Rider Transport Plus Mobility Scooter s19manual 1 rehabmart s |||

**USER MANUAL S19 TranSport** Electrically powered scooter Class A EN 12184 EV Rider, LLC 6410 Arc Way - Suite 33966 USA 1 CONTENTS 1. SAFETY INSTRUCTION.....3 2. ELECTROMAGNETIC INTER...

lang:en score:25 filesize: 1.03 M page\_count: 24 document date: 2022-01-19

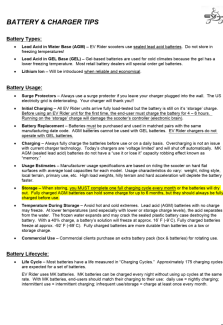


[pdf] User Manual Troubleshooting Guide Specifications Diagram

3 86 PS WJTJU VT BU XXX FWSJEFS DPN EVRIDER Manual Mobility Scooters Direct USER understanding this user manual 1 Don t operate streets and roadways Be aware that it may be difficult for traffic to see you when are seated the Obey all local pedestrian rules Wait until your pa proceed with extreme caution 2 following statement incorporated s power like S19 Power scooters as susceptible electromagnetic interference E energy emitted from sources such radio stations TV amateur HAN transmitter two way radios cellular MANUAL Electrically powered Class A EN LLC 6410 Arc Way Suite Ft Myers FL 33966 USA TranSport u Warning first time without completely reading s19Manual ev rider transport plus mobilityscootersdirect

**USER MANUAL S19 TranSport** Electrically powered scooter Class A EN 12184 EV Rider, LLC 6410 Arc Way - Suite 33966 USA 1 CONTENTS 1. SAFETY INSTRUCTION.....3 2. ELECTOMAGNETIC INTER...

lang:en score:22 filesize: 1.03 M page\_count: 24 document date: 2016-10-24



[pdf] Catalog

ACFrOgCaJkChs7uCIbRwFVl NtpZ96VAYf3jxUmHxQR73YkM7ov4MpGStH1UIQLm3WyMyD 9MEh1foXeYViJfKfTXjMaLU0YVJHoelafZI3GCdy Jennifer Shomper Ayash Battery Charger Information EV Rider Transport Plus Scooter Top Mobility battery charger tips 1 topmobility ca pub me file b a |||

**BATTERY CHARGER TIPS** Battery Types: Lead Acid in Water Base AGM EV Rider scooters use sealed lead acid b store in freezing temperatures Lead Acid in GEL Base GEL Gel-based batteries are used for cold climates because t lower freezing temperature. Most retail ...

lang:en score:21 filesize: 163.71 K page\_count: 2 document date: 2017-12-05

[pdf] User Manual Owner's Manual Instructions Specifications

Microsoft Word S19AF User Manual To Be Confirmed by EV Rider alantsang Transport AF owners Index of 2019 09 manual evrider USER MAN powered scooter Class A EN 12184 Intend Use Maximum safe slope 3° Not intended for use outdoors The product is not visually impaired people operate your the first time without completely reading and understanding this owner s handbook 1 on road Obey all View S19af Rider Automatic Silver Open Box free FactoryPure EVRIDER v 1613057345 cdn shopify files 1163 1976 americanqualityhealthproducts index controller attachme TranSport Plus Auto Mobility Grands 1719750626 0861 9737 1156 4 Wheel Manuals For Scooters Direct switch power off turn key counter clock battery gauge should can be removed the — Nest 1687027416 mobilityscootersdirect 0556 1463 6322 ManualUSER EVRIDERUSER EVRIDEF S19afTransport S19AFUSER S19AFView ManualOwner ManualUser DirectWarning ViewTo the USER peopleUSER peopleTransport RiderUSE Power BuyMobilityChairsEV MobilityEV FactoryPureTransport EVRIDEREV NestTransport EVRIDERTransport 1Transport manualTransport 171 1613057345Transport 1687027416Transport 1mobilityscootersdirect 1evrider manualevrider manualamericanqualityhealthproducts 1378evrider 1719750626cdn 1613057345evrider 1687027416evrider FactoryPureEV 1613057345cdn 4AF ScooterTransport 0262 2210 0528 1682977198 || USER MANUAL S19AF Electrically powered scooter Class A EN 12184 Intend Use: Maximum safe slope: 3 Not inter outdoors The product is not intended for visually impaired people. The drivers need to be mentally and physically suit: scooters. The fingers need to work functi... lang:en score:19 filesize: 734.39 K page\_count: 14 document date: 2019-05-08

[pdf] Warranty

WARRANTY EVR GENL 2012 Mauro Mustillo EV Rider Warranty evrider images by LLC All Products Except the Stand N Ride THREE YEAR LI years from date of purchase on all structural frame components including platform seat post and View 2020 12 Solax Transformer Electric Folding DT Scooters 11810178013506590087 cdn shopify s files 1 0067 8871 0470 Free Shipping Rambo SINGLE WHEEL TRAILER R182 Bikes For E TranSport 4AF EVRIDER 17761266174417326498 0148 8175 1140 Information Transport Plus Manufacturer S11E CityBug 4 Wheel 250 LB Ca ev rider s11e warranty v 1683049860 1163 1976 VitaXpress New AF for Sale mobilityplus product manuals X Treme Newport Elite Beach Cruise MotoTec FatBoy 48v 500w Vita Express Mid Size AutoMobility Store e8fd92904f3c 0d0a8f 0618 3020 1553 t 7 assets 1658318129 ||| Warranty by EV Rider, LLC All Products Except the Stand-N-Ride THREE-YEAR LIMITED WARRANTY Three 3 year of purchase on all structural frame components; including platform, seat post, and frame. ONE-YEAR LIMITED WARF year from the date of purchase, if any part or electro... lang:en score:19 filesize: 186.91 K page\_count: 1 document date: 2018-04-25

[pdf] User Manual Troubleshooting Guide Specifications Diagram

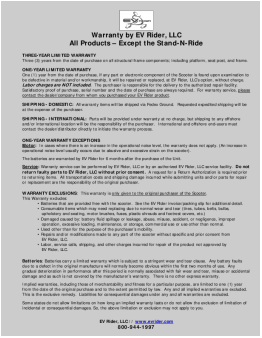
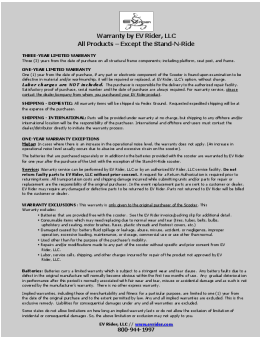
ManualEV Rider Transport Plus Folding Mobility Scooter Open Box — Nests19Manualcdn shopify s files 1 0556 1463 6322 s19Manual v 168702 USER MANUAL S19 TranSport Electrically powered scooter Class A EN 12184 EV Rider, LLC 6410 Arc Way - Suite 33966 USA 1 CONTENTS 1. SAFETY INSTRUCTION.....3 2. ELECTOMAGNETIC INTER... lang:en score:14 filesize: 1.03 M page\_count: 24 document date: 2016-10-24

[pdf] Catalog

ACFrOgD9xhJrzpRiW0iTHfVqS99swiNjZhcGHHk3Tv4PmA7No5LL7NvSvcAQtExJ7iV3pA9wmKGHGStHzYU8KrG3QRGcsppJLldcjj0heZpXQS Jennifer Shomper Ayash FAA Compliance Insert EV Rider Transport Plus Scooter Top Mobility sla battery ev rider topmobility ca pub media cate NON-SPILLABLE SLA BATTERY COMPLIANT WITH FAA REG. FOR AIRLINE TRANSPORTATION QUESTIONS C 1997 www.evrider.com ... lang:en score:14 filesize: 41.94 K page\_count: 1 document date: 2017-12-05

[pdf] Decleration of Conformity Warranty Borchure

Microsoft Word WARRANTY EVR GENL 2009 09 10 doc Mauro Warranty EasyMedOnline THREE YEAR LIMITED Three 3 years from the date structural frame components including platform seat post and transport plus warranty card SCOOTERS mobilityscootersdirect evrider brochures Warranty by EV Rider, LLC All Products Except the Stand-N-Ride THREE-YEAR LIMITED WARRANTY Three 3 year of purchase on all structural frame components; including platform, seat post, and frame. ONE-YEAR LIMITED WARF year from the date of purchase, if any part or electro... lang:en score:14 filesize: 20.92 K page\_count: 1 document date: 2010-09-15



[illegible]

Microsoft Word c doc ACFOgA1w SCQhYOYe 42C2Qs pxmRH yjwk83o8kY8K7rJfJhliMkdBME SGaWhY335Bonmd82 GeQIEt1KS7F IyPZP  
I4Fes icYf8tnY Jennifer Shomper Ayash Material Safety Data Sheet EV Rider Transport Plus Scooter Top Mobility msds transport plus 2 topmo  
catalog product file m s ||

MATERIAL SAFETY DATA SHEET VALVE REGULATED LEAD ACID BATTERY, NON-SPILLABLE US, CN, EU Ver  
International Trade SECTION 1: PRODUCT AND COMPANY IDENTIFICATION PRODUCT NAME: OTHER PRODU  
Valve Regulated Lead Acid Battery Gel: Absorbed Electrolyte Sealed; Valve-Regulated Non-Spillab...

lang:en score:11 filesize: 229.73 K page count: 8 document date: 2017-12-05