

## Manuals+

[Q & A](#) | [Deep Search](#) | [Upload](#)

manuals.plus /

- › [Einhell](#) /
- › [Einhell GE-GP 9041 E Garden Pump User Manual](#)

## Einhell GE-GP 9041 E

# Einhell GE-GP 9041 E Garden Pump User Manual

Model: GE-GP 9041 E | Brand: Einhell

## PRODUCT OVERVIEW

The Einhell GE-GP 9041 E garden pump is a high-quality, powerful, and intelligent device from the Eco Power series, designed to assist ambitious hobby gardeners in watering their gardens using collected rainwater. This energy-efficient 900-watt pump can deliver up to 4,100 liters of water per hour.



Figure 1: The Einhell GE-GP 9041 E garden pump, showcasing its red and black design with a clear filter housing.

## Key Features:

- **Eco Power Technology:** Ensures higher flow rate with reduced power consumption.
- **Thermal Overload Protection:** Prevents motor overheating during high-performance operation.
- **Integrated Pre-filter:** Protects the pump from impurities in the drawn water.
- **Comfortable Carrying Handle:** Allows for easy and convenient transport.
- **Separate Water Filling Opening:** Facilitates easy priming of the pump before use.
- **Practical Water Drain Screw:** Enables easy draining of residual water for winterization.
- **High-Quality Connections:** 33.3 mm (1") IG suction and pressure connections made of durable metal for extended lifespan.



Figure 2: The Eco Power logo, indicating efficient technology for higher flow and lower consumption.

## SETUP AND INSTALLATION

---

Proper setup is crucial for the optimal performance and longevity of your Einhell GE-GP 9041 E garden pump. Follow these steps carefully.

### 1. Positioning the Pump

Place the pump on a stable, level surface, protected from direct weather exposure. Ensure adequate ventilation around the pump.

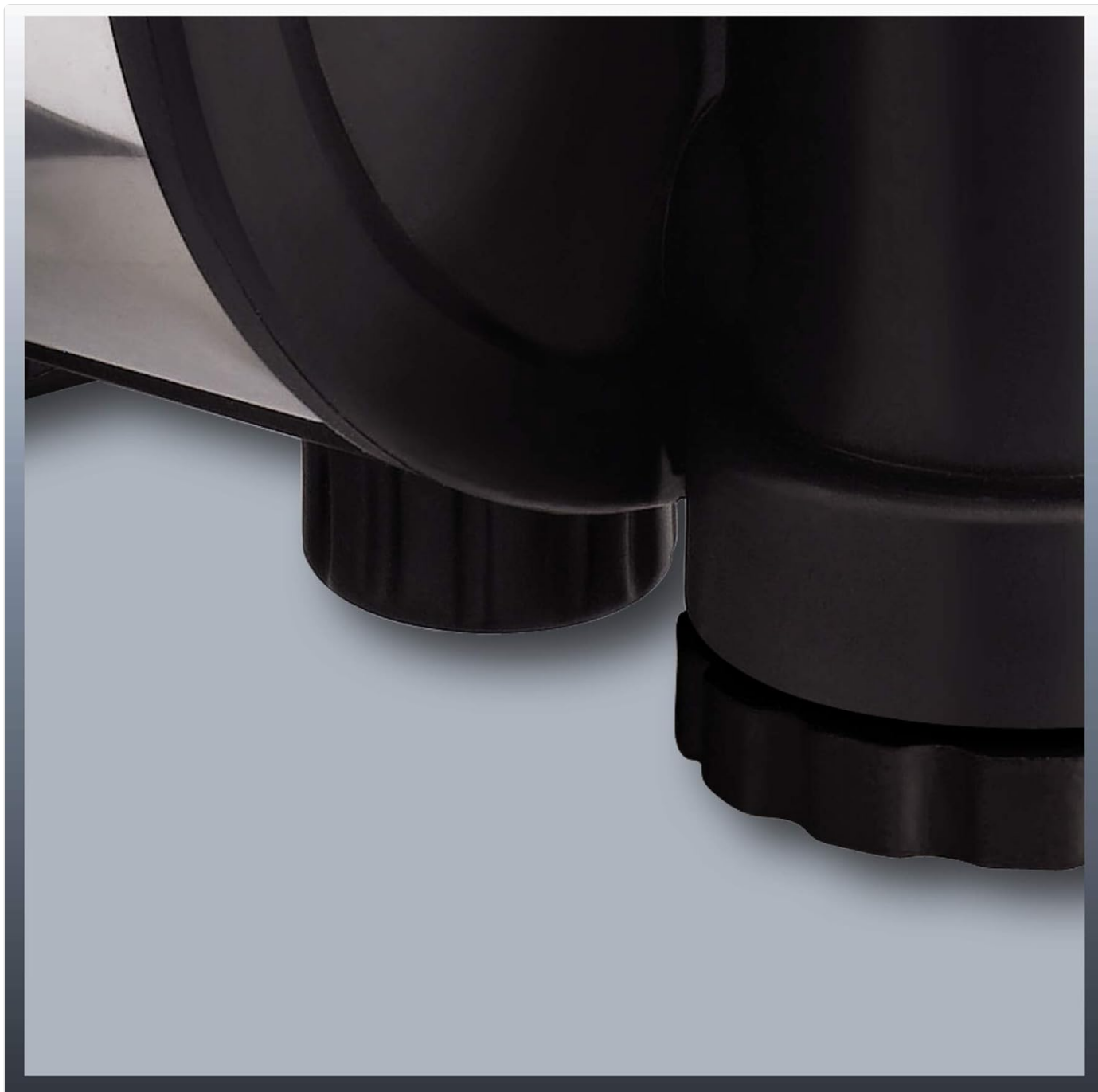


Figure 3: Detail of the pump's stable base, designed for secure placement.

## 2. Connecting Hoses

Connect the suction hose to the 33.3 mm (1") IG suction connection and the pressure hose to the 33.3 mm (1") IG pressure connection. Ensure all connections are tight to prevent air leaks, which can affect pump performance.



Figure 4: View of the durable metal suction and pressure connections on the pump.



Figure 5: Another perspective of the robust hose connection point.

### **3. Priming the Pump**

Before first use or after the pump has been drained, it must be primed. Open the large water filling opening and fill the pump housing completely with water until it overflows. Close the filling opening securely.

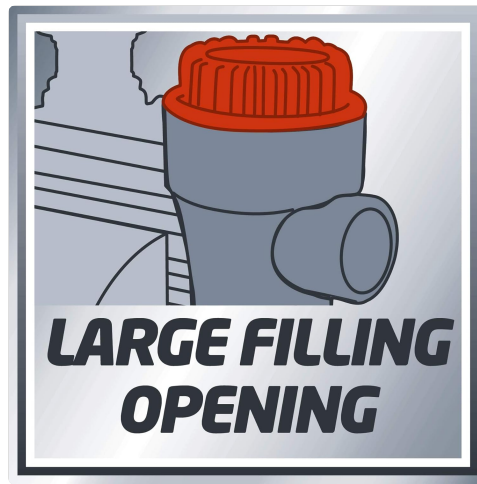


Figure 6: Diagram illustrating the large water filling opening for easy priming.

#### 4. Integrated Pre-filter and Non-Return Valve

The pump features an integrated pre-filter and non-return valve. The pre-filter protects the pump from debris, while the non-return valve prevents water from flowing back, maintaining prime. Regularly check and clean the pre-filter to ensure optimal performance.





Figure 7: Close-up of the transparent pre-filter housing, allowing visual inspection of the filter.



Figure 8: Diagram depicting the integrated pre-filter, designed to capture impurities.



Figure 9: Diagram illustrating the function of the non-return valve, preventing backflow.

## OPERATING INSTRUCTIONS

---

Once the pump is set up and primed, you can begin operation. Always ensure the pump is connected to a suitable power supply.

### 1. Starting the Pump

Plug the power cord into a grounded electrical outlet. Use the ON/OFF switch to start the pump. The pump will begin drawing water and building pressure.







Figure 10: A user demonstrating the Einhell garden pump in action, watering a garden.

## 2. Monitoring Performance

The GE-GP 9041 E is designed for continuous operation within its specified limits. The Eco Power technology ensures efficient water delivery. The thermal overload protection will automatically shut off the pump if the motor temperature becomes too high, preventing damage.



Figure 11: Diagram illustrating the internal cooling system of the pump, crucial for preventing overheating.

## 3. Shutting Down

To turn off the pump, simply switch the ON/OFF switch to the OFF position. Disconnect the power cord from the outlet when the pump is not in use for extended periods.

## MAINTENANCE

Regular maintenance ensures the longevity and efficient operation of your garden pump.

## 1. Cleaning the Pre-filter

Periodically inspect the integrated pre-filter for debris. If clogged, remove the filter housing, clean the filter element under running water, and reassemble. Ensure the seal is properly seated to prevent leaks.

## 2. Winterization (Draining)

Before the first frost, or if the pump will not be used for an extended period in cold conditions, it is essential to drain all residual water to prevent freezing damage. Use the practical water drain screw located at the bottom of the pump to completely empty the unit.



Figure 12: Close-up of the water drain screw, used for emptying the pump for winter storage.

Store the pump in a dry, frost-free location.

## TROUBLESHOOTING

This section provides solutions to common issues you might encounter with your garden pump.

Problem	Possible Cause	Solution
Pump does not start.	No power supply; Thermal overload protection activated; Motor fault.	Check power connection and fuse. Allow pump to cool down if thermal protection activated. Contact service if motor fault suspected.
Pump runs but no water is delivered or pressure is low.	Pump not primed; Suction hose leaking air; Suction hose blocked; Water source empty; Pre-filter clogged.	Prime the pump completely. Check all suction hose connections for leaks. Clear any blockages in the suction hose. Ensure water source is sufficient. Clean the pre-filter.
Pump stops during operation.	Thermal overload protection activated; Water source empty; Air in pump.	Allow pump to cool down. Check water source. Re-prime the pump.
Unusual noise from pump.	Air in pump; Debris in pump; Worn bearings.	Re-prime the pump. Check for and remove any debris. Contact service if noise persists.

## TECHNICAL SPECIFICATIONS

Specification	Value
Brand	Einhell
Model Number	GE-GP 9041 E
Manufacturer	Einhell
Power Source	Corded Electric
Voltage	230 Volt
Wattage	900 watt
Maximum Flow Rate	4100 Liters Per Hour
Maximum Head Height	48 Meters
Product Dimensions (L x W x H)	49 x 24 x 30.99 cm
Item Weight	10.9 Kilograms
Material	Metal
Color	Red

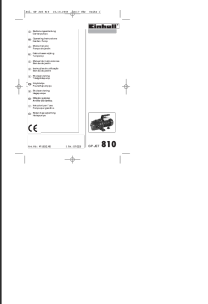



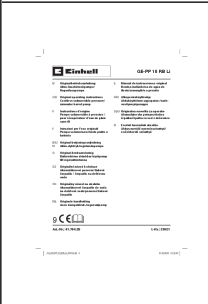
## WARRANTY AND SUPPORT

For warranty information, technical support, or spare parts, please contact Einhell customer service directly. Keep your purchase receipt and product model number handy when contacting support.

You can find more information and contact details on the official Einhell website or through your local retailer.

*Note: Specific warranty terms may vary by region. Please refer to the warranty card included with your product or the manufacturer's official website for detailed information.*

## Related Documents - GE-GP 9041 E

	<p><a href="#">Einhell GP Jet 810 Gartenpumpe Bedienungsanleitung</a></p> <p>Bedienungsanleitung für die Einhell GP Jet 810 Gartenpumpe. Enthält Informationen zu Sicherheitshinweisen, Montage, Verwendung, technischen Daten, Wartung und Fehlerbehebung für die Gartenbewässerung.</p>
	<p><a href="#">Einhell GP-LC 36/35 Li Akku-Kettensäge: Bedienungsanleitung</a></p> <p>Die Einhell GP-LC 36/35 Li ist eine leistungsstarke Akku-Kettensäge, entwickelt für effizientes Arbeiten im Garten und bei der Holzbearbeitung. Dieses Dokument enthält umfassende Betriebsanleitungen und Sicherheitshinweise für die korrekte Montage, den sicheren Betrieb und die ordnungsgemäße Wartung des Geräts.</p>
	<p><a href="#">Bedienungsanleitung Einhell GP-EA 18/150 Li BL-Solo Akku-Erdbohrer</a></p> <p>Offizielle Bedienungsanleitung für den Einhell GP-EA 18/150 Li BL-Solo Akku-Erdbohrer. Enthält Informationen zur sicheren Verwendung, technischen Daten, Inbetriebnahme, Bedienung, Wartung und Garantie.</p>
	<p><a href="#">Einhell GE-CF 18/2200 Li Cordless Fan Operating Manual</a></p> <p>Discover the Einhell GE-CF 18/2200 Li cordless fan. This operating manual details its features for household ventilation, including cordless power, adjustable speeds, and portability. Learn about safe operation, maintenance, and warranty information.</p>
	<p><a href="#">Einhell GE-PP 18 RB Li Akku-Tauchdruckpumpe: Bedienungsanleitung</a></p> <p>Umfassende Bedienungsanleitung für die Einhell GE-PP 18 RB Li Akku-Tauchdruckpumpe. Erfahren Sie alles über Installation, sichere Bedienung, technische Daten und Wartung dieses kabellosen Geräts für Haus und Garten.</p>

**Einhell** GE-CL 36 Li E

1. Introduction	2. Safety instructions
3. Assembly	4. Operation
5. Maintenance	6. Troubleshooting
7. Accessories	8. Notes
9. Declaration of Conformity	10. CE Marking
11. Warranty	12. Contact information

15 CE

[Einhell GE-CL 36 Li E Cordless Blower Vac Operating Instructions](#)

Comprehensive operating instructions and safety guidelines for the Einhell GE-CL 36 Li E Cordless Blower Vac, detailing assembly, usage, maintenance, and troubleshooting.