

Rev-A-Shelf 432-BFBBSC-6C

Rev-A-Shelf 6-Inch Pull-Out Base Cabinet Filler Organizer

MODEL: 432-BFBBSC-6C

Instruction Manual

Product Overview

The Rev-A-Shelf 6-inch Pull-Out Base Cabinet Filler Organizer is designed to maximize space and efficiency within kitchen cabinetry. This unit transforms otherwise unused filler space between cabinets into functional storage, ideal for spices, seasonings, and other small items.

It features a fully assembled wood construction with adjustable shelves and soft-close slides for smooth operation.



Image: The Rev-A-Shelf 6-inch Pull-Out Base Cabinet Filler Organizer, showcasing its natural maple wood finish and chrome rails.



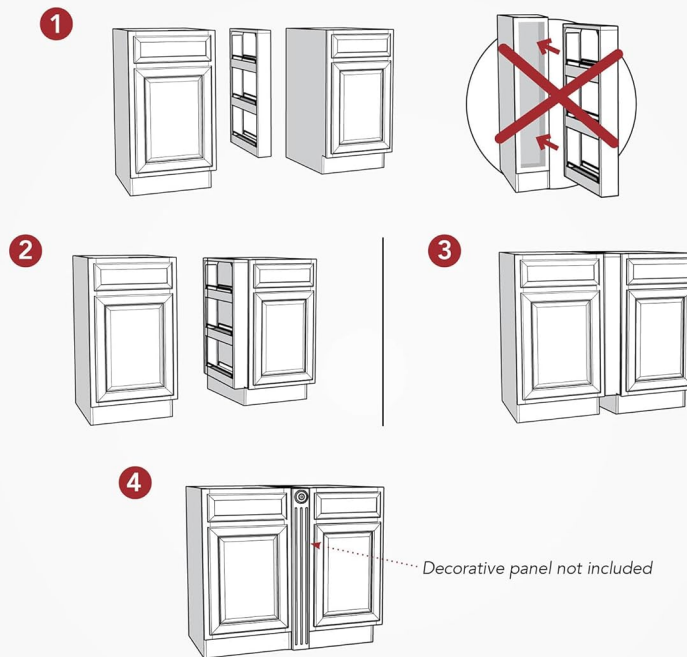
Image: The pull-out organizer installed in a kitchen cabinet, filled with various spice jars, demonstrating its practical use.

Important Considerations: What is a Filler?

A cabinet filler is a pre-assembled unit designed to occupy and utilize the small, often wasted, spaces between standard kitchen cabinets. It provides functional storage that would otherwise be covered by a decorative panel.

Note: This filler is designed for **new kitchen installations only**. It is intended to fit between two newly installed cabinets and is not compatible with existing cabinet setups.

WHAT IS A FILLER?



A cabinet filler creates functional storage behind what would have been otherwise wasted space normally covered up with a decorative panel.

Fillers were designed to **ONLY** work in new kitchen installations since fillers fit in-between two cabinets and will not fit or function properly inside an existing cabinet.

Image: A diagram illustrating the concept of a cabinet filler, showing how it integrates between two cabinets to create functional storage from previously unused space.

Setup and Installation

The Rev-A-Shelf filler organizer comes fully assembled for straightforward installation. It is designed to be mounted between two base cabinets.

Tools Needed:

- Power Drill
- Pencil
- Screwdriver
- Tape Measure

Pre-Installation Steps:

1. **Measure Cabinet Opening:** Carefully measure the width, depth, and height of the space where the filler will be installed. Ensure the opening is exactly 6 inches wide and 30 inches high. Check for any obstructions like door hinges or plumbing.
2. **Prepare Installation Area:** Ensure sufficient access between the adjacent cabinets for proper installation.

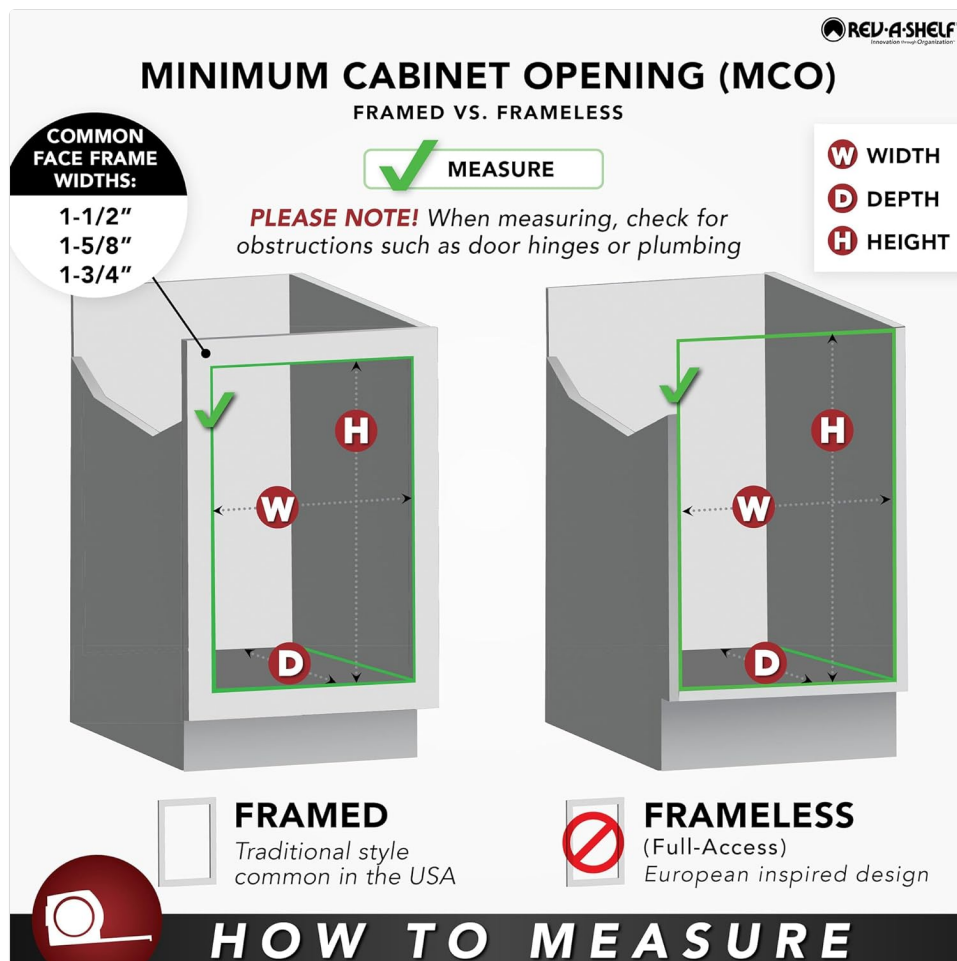


Image: A diagram illustrating how to measure the minimum cabinet opening for both framed and frameless cabinet styles, highlighting width, depth, and height.

Installation Procedure:

1. **Position the Filler:** Determine the desired location for the filler. The unit is designed to be inserted and aligned between the two base cabinets.
2. **Secure the Filler:** Insert the filler into the designated space. Align it properly and screw it into place using the provided mounting hardware. The front wood piece should remain attached during this step to maintain the unit's squareness.
3. **Complete Cabinetry:** After the filler is securely installed, proceed with installing the countertop, any necessary filler strips, and your chosen pull hardware (not included).
4. **Attach Door Mount Brackets:** The adjustable door mount brackets are included and required for operation. Attach them as per the detailed instructions provided in the packaging to allow for a decorative panel to be mounted.



Image: A visual guide detailing the three main steps for installing the pull-out filler: determining location, inserting and screwing into place, and installing the countertop and hardware.

Operating Instructions

The Rev-A-Shelf Pull-Out Filler Organizer is designed for simple and efficient use.

- **Accessing Contents:** Gently pull the attached decorative panel (not included) to extend the organizer from the cabinet. The full-extension ball-bearing soft-close slides ensure smooth and complete access to all items.
- **Adjusting Shelves:** The unit includes three adjustable shelves with chrome rails. To adjust a shelf, carefully lift it from its current position and reposition it into the desired slots along the side panels. This allows for customization based on the height of your stored items.
- **Closing the Unit:** Push the organizer back into the cabinet. The soft-close mechanism will engage, ensuring the unit closes quietly and completely without slamming.

432 Series

REV-A-SHELF

6" BASE CABINET FILLER/ORGANIZER

SOFT-CLOSE • NATURAL MAPLE • CHROME RAILS



(3) ADJUSTABLE
OR REMOVABLE
SHELVES



FEATURES

Image: A diagram highlighting key features including easy installation, 100 lb. weight rating, natural maple finish, adjustable/removable shelves, and full-extension soft-close slides.



Image: An illustration demonstrating the soft-close slide mechanism, showing the smooth and

Maintenance

Proper maintenance ensures the longevity and optimal performance of your Rev-A-Shelf product.

- **Wipe Clean:** Periodically clean the product to remove dirt and spills. Use mild soap and water with a soft cloth. Avoid abrasive cleaners, bleach, or harsh chemicals, as these can damage the wood finish, plastic polymers, or metal components.
- **Adjust:** If any brackets, screws, or bolts become loose over time due to normal use, simply adjust or tighten them as needed to maintain stability and function.
- **Grease:** The slide system is pre-coated with a multi-purpose grease. While additional greasing is generally not required, if the slides begin to feel stiff, apply a good quality multi-purpose grease. **Do not use spray lubricants**, as they can break down the existing grease over time.

CARE & MAINTENANCE

Rev-A-Shelf® storage & organization products are designed and engineered to last a lifetime. Our products are manufactured with durable, high quality materials for which little maintenance is required. We recommend you perform the following tasks as needed.

WIPE CLEAN

Occasionally our products become dirty from everyday use in your kitchen, closet, utility room, laundry room, or bathroom. We suggest handwashing with soap and water and wiping dry when this happens. Avoid using abrasives or bleach, and clean promptly as chemicals and oils can break down resin (plastic) polymers or finishes on wood and metal.


ADJUST

Maintenance, if ever needed, consists of simply adjusting a bracket or tightening a screw or bolt that has become loose over a period of time, from normal use.

GREASE

Our products are known to pivot, pull and slide and are usually mounted to a slide system that is coated with a multi-purpose grease. You should never have to apply more grease, but if you need to, always use a good quality multi-purpose one. Never use any spray lubricant, as that will break down the grease over time.

Please contact Rev-A-Shelf® Customer Service with any additional questions or concerns.
1-800-626-1126 | INFO@REV-A-SHELF.COM



REV-A-SHELF
Innovation through Organization™
rev-a-shelf.com

Image: A graphic detailing care and maintenance instructions, including wipe cleaning, adjustment, and greasing guidelines.

Troubleshooting

If you encounter issues with your Rev-A-Shelf Pull-Out Filler Organizer, consider the following common solutions:

- **Difficulty with Smooth Operation (Sticking/Tight Pull):**
 - Ensure the unit is properly aligned and level within the cabinet opening. Misalignment can cause friction.
 - Check for any debris or obstructions in the slide tracks.
 - If the slides feel stiff, apply a small amount of high-quality multi-purpose grease to the ball bearings. Avoid spray lubricants.
 - Verify that all mounting screws are tightened appropriately. Overtightening or uneven tightening can affect slide performance.
- **Unit Does Not Close Completely or Has a 'Hitch':**
 - Inspect the soft-close mechanism for any damage or obstruction.
 - Re-check the mounting screws, particularly those near the slide mechanism, to ensure none are protruding or interfering with the closing action.
 - Confirm that the cabinet opening dimensions are precise and that the unit is not binding against the cabinet frame.
- **Shelves Are Not Stable:**
 - Ensure shelves are correctly seated in all four support pins.
 - Verify that the chrome rails are securely attached to the shelves.

If these steps do not resolve the issue, please contact customer support.

Specifications

Feature	Detail
Model Number	432-BFBBSC-6C
Dimensions (W x D x H)	6 inches x 23 inches x 30 inches
Weight	Approximately 14.97 pounds
Material	Maple Wood; Steel
Finish Type	Semi-Gloss
Number of Shelves	3 adjustable shelves + 1 fixed bottom shelf
Mounting Type	Door Mount, Wall Mount
Load Capacity	Up to 100 pounds
Slide Type	Full-extension ball-bearing soft-close

Feature	Detail
Included Components	1 Wood filler unit, 3 adjustable shelves with chrome rails, mounting hardware
UPC	090713001586



Image: A detailed diagram outlining the dimensions (width, depth, height), full-extension soft-close feature, and adjustable shelves of the 432 Series filler organizer.

Warranty and Support

Warranty: This Rev-A-Shelf product is covered by a limited lifetime warranty.

Customer Support: For any additional questions, concerns, or warranty claims, please contact Rev-A-Shelf Customer Service:

Phone: 1-800-626-1126

Email: INFO@REV-A-SHELF.COM

Related Documents - 432-BFBBSC-6C

	<p>Rev-A-Shelf Vanity/Base Cabinet Filler Installation Instructions</p> <p>Step-by-step guide for installing the Rev-A-Shelf Vanity/Base Cabinet Filler, including tools required, assembly time, and maintenance tips.</p>
	<p>Rev-A-Shelf Soft-Close Tip-Out Trays Installation Instructions</p> <p>Step-by-step guide for installing Rev-A-Shelf's soft-close tip-out trays in sink base cabinets. Includes tools required, parts list, and detailed instructions for preparing panels, mounting hinges, and attaching trays.</p>
	<p>REV-A-SHELF Trimmable Craftsman Collection Wood Drawer Insert Installation Instructions</p> <p>Detailed installation instructions for the REV-A-SHELF Trimmable Craftsman Collection Wood Drawer Insert (Model I-4WXTCC-0225). Includes parts list, tools required, care instructions, and step-by-step assembly guidance.</p>
	<p>Rev-A-Shelf Craftsman Collection Deep Drawer Divider Insert Installation Guide</p> <p>Step-by-step installation instructions and parts list for the Rev-A-Shelf Craftsman Collection Deep Drawer Divider Insert. Includes care and maintenance tips.</p>
	<p>Rev-A-Shelf 4WP Series Swing Out Unit Installation Guide</p> <p>Detailed installation instructions for the Rev-A-Shelf 4WP Series Swing Out Unit, including parts list, tools needed, and step-by-step guidance for cabinet integration.</p>
	<p>Rev-A-Shelf Tip-Out Tray System Installation Instructions</p> <p>Comprehensive installation guide for the Rev-A-Shelf Tip-Out Tray System, covering hinge types, tray assembly, and mounting for polymer and slim series trays. Includes tools required, helpful hints, and customer support contact.</p>