

Scheppach 3901802703

Scheppach 3901802703 Anti-Tilt Protection Accessory for Plunge Saws

Instruction Manual

INTRODUCTION

This manual provides essential information for the safe and effective use of your Scheppach 3901802703 Anti-Tilt Protection Accessory. This accessory is designed to enhance the stability of your plunge saw when used with a guide rail, preventing tilting and ensuring precise, secure cuts. Please read these instructions carefully before installation and operation.

SAFETY INFORMATION

Always observe general safety precautions when working with power tools and accessories. Failure to follow these instructions may result in injury or damage to the product or other equipment.

- Ensure your plunge saw is disconnected from the power supply before attaching or adjusting any accessories.
- Wear appropriate personal protective equipment (PPE), including safety glasses, hearing protection, and gloves.
- Keep the work area clean and well-lit.
- Always use the accessory as intended and with compatible equipment.
- Inspect the accessory for any damage before each use. Do not use if damaged.

PACKAGE CONTENTS

The Scheppach 3901802703 Anti-Tilt Protection Accessory package includes:

- 1 x Scheppach Anti-Tilt Protection Accessory (Model 3901802703)

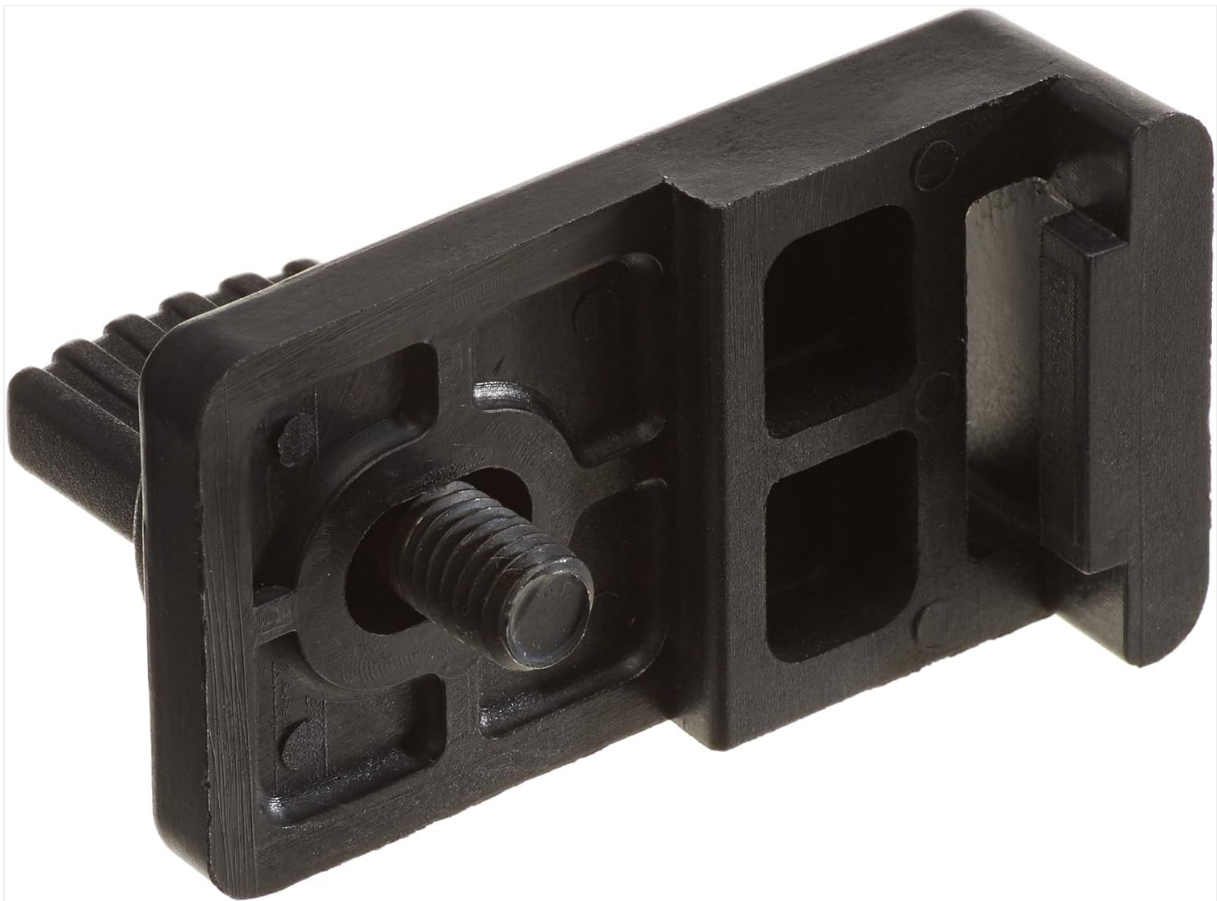


Image 1: The Scheppach 3901802703 Anti-Tilt Protection Accessory. This image shows the black plastic accessory with a threaded metal screw for attachment.

SETUP

Follow these steps to properly install the anti-tilt protection accessory:

1. **Identify the Mounting Point:** Locate the designated slot or mounting point on your compatible plunge saw, typically near the base plate, designed for guide rail accessories.
2. **Insert the Accessory:** Slide the anti-tilt protection accessory into the mounting slot on your plunge saw. Ensure it is oriented correctly, with the locking mechanism facing the guide rail.
3. **Secure the Accessory:** Tighten the integrated screw or locking mechanism on the accessory to firmly secure it to the plunge saw. Do not overtighten.
4. **Attach to Guide Rail:** Place your plunge saw onto the guide rail. The anti-tilt protection should engage with the groove or edge of the guide rail, preventing the saw from lifting or tilting during operation.
5. **Verify Stability:** Gently attempt to lift or tilt the saw from the guide rail to confirm that the anti-tilt protection is securely engaged and providing the intended stability.

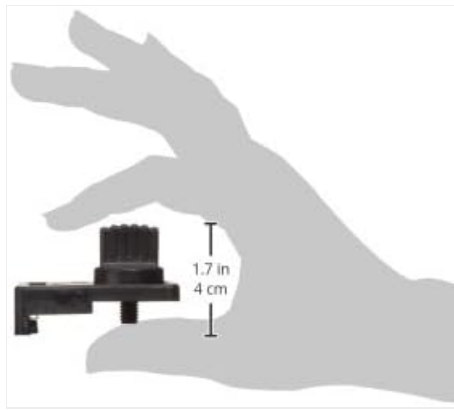


Image 2: Size reference of the Scheppach 3901802703 Anti-Tilt Protection Accessory. This image shows the accessory held in a hand, indicating its compact size, approximately 1.7 inches (4 cm) in height.

OPERATING INSTRUCTIONS

Once the anti-tilt protection is installed and secured, its operation is integrated with the use of your plunge saw and guide rail:

- The accessory automatically engages with the guide rail as the saw is placed on it, providing a stable platform for cutting.
- It prevents the saw from inadvertently lifting off the guide rail, especially during the initial plunge or when cutting through challenging materials.
- Maintain a firm grip on your plunge saw and guide it smoothly along the rail during operation.
- After completing a cut, carefully lift the saw from the guide rail. The anti-tilt protection will disengage automatically.

MAINTENANCE

Proper maintenance ensures the longevity and reliable performance of your accessory:

- **Cleaning:** After each use, clean the accessory to remove sawdust, debris, or resin buildup. Use a dry cloth or a soft brush. Avoid harsh chemicals that could damage the plastic.
- **Inspection:** Regularly inspect the accessory for signs of wear, cracks, or damage, especially the locking mechanism and contact points.
- **Storage:** Store the accessory in a clean, dry place, away from direct sunlight and extreme temperatures.

TROUBLESHOOTING

If you encounter issues with the anti-tilt protection accessory, refer to the following common solutions:

Problem	Possible Cause	Solution
Accessory does not secure firmly to the saw.	Loose screw; incompatible saw model; debris in mounting slot.	Ensure the screw is tightened; verify saw compatibility; clean the mounting slot.
Saw still tilts or lifts from the guide rail.	Accessory not properly engaged; worn accessory; incompatible guide rail.	Re-seat the saw on the guide rail; inspect accessory for wear and replace if necessary; ensure guide rail compatibility.

Problem	Possible Cause	Solution
Difficulty attaching or detaching the accessory.	Debris in slot; overtightened screw.	Clean mounting slot; loosen the screw slightly before detaching.

SPECIFICATIONS

Feature	Detail
Model Number	3901802703
Brand	Scheppach
Type	Anti-Tilt Protection Accessory for Plunge Saws
Material	Plastic (main body), Steel (screw)
Color	Multicolor (predominantly black)
Global Trade Item Number (GTIN)	04046664014652
ASIN	B00BEKMJCW

WARRANTY INFORMATION

Scheppach products are manufactured to high-quality standards. For specific warranty terms and conditions applicable to your region, please refer to the warranty card included with your original purchase or visit the official Scheppach website. Keep your proof of purchase for any warranty claims.

SUPPORT

If you require further assistance, have questions about installation, operation, or troubleshooting that are not covered in this manual, please contact Scheppach customer support. You can typically find contact information on the official Scheppach website or through your local dealer.

Scheppach Official Website: www.scheppach.com