

APC AR7580A

APC AR7580A Vertical Cable Manager Instruction Manual

Model: AR7580A



1. INTRODUCTION

The APC AR7580A Vertical Cable Manager is designed to provide efficient and organized cable routing within Netshelter racks. This product helps maintain a clean and functional server environment by managing network and power cables, reducing clutter, and improving airflow. This manual provides essential information for the proper installation, use, and maintenance of your AR7580A Vertical Cable Manager.

Key features include durable construction and high efficiency in cable organization.

2. PRODUCT OVERVIEW

The AR7580A Vertical Cable Manager consists of a robust frame with multiple cable fingers and brush strips designed to guide and secure cables. It is supplied as a 2-quantity set, allowing for comprehensive cable management solutions within your rack.





Figure 1: Front view of the APC AR7580A Vertical Cable Manager, showing the main structure and cable routing fingers.

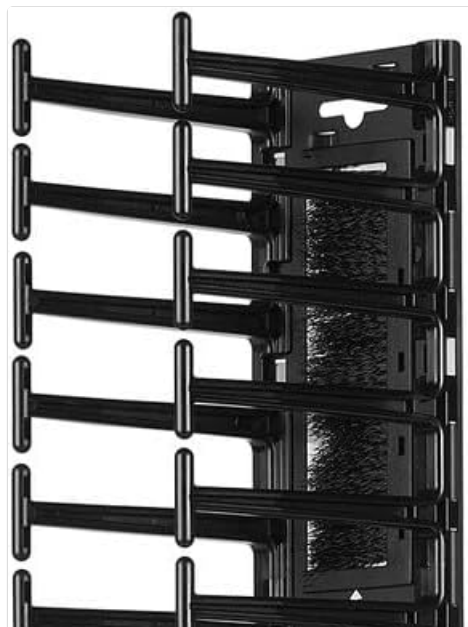




Figure 2: Side view of the APC AR7580A Vertical Cable Manager, highlighting the individual cable fingers for organized routing.

3. SAFETY INFORMATION

Please read and understand all safety instructions before installing or using this product. Failure to do so may result in injury or damage to equipment.

- Always ensure the rack is stable and properly secured before installing any accessories.
- Use appropriate tools for installation.
- Do not overload the cable manager with excessive cables, as this can impede airflow and strain mounting points.
- Keep hands and fingers clear of moving parts during installation.

4. PACKAGE CONTENTS

Verify that all components are present before beginning installation:

- 2 x APC AR7580A Vertical Cable Managers
- Mounting hardware (screws, cage nuts, washers - typically included with Netshelter racks or cable manager)

If any items are missing or damaged, contact your supplier immediately.

5. SETUP AND INSTALLATION

The APC AR7580A Vertical Cable Manager is designed for easy installation into APC Netshelter racks. Follow these steps for proper mounting:

1. **Prepare the Rack:** Ensure the Netshelter rack is properly assembled and secured. Identify the desired location for the vertical cable managers, typically along the side channels of the rack frame.
2. **Position the Manager:** Align one of the vertical cable managers with the mounting holes on the rack frame. The cable fingers should face inwards towards the rack equipment.
3. **Secure the Manager:** Using the appropriate mounting hardware (e.g., M6 screws and cage nuts), attach the cable manager to the rack frame. Start by loosely fastening a few screws at the top and bottom, then proceed to secure all mounting points. Ensure the manager is level and firmly attached.
4. **Repeat for Second Manager:** Install the second vertical cable manager on the opposite side of the rack or in another desired location, following the same procedure.



Figure 3: The AR7580A Vertical Cable Manager installed within a Netshelter rack, viewed with the side door open.



Figure 4: A detailed view of cables neatly routed through the cable management fingers of the AR7580A.

6. CABLE ROUTING GUIDELINES

Once installed, the vertical cable managers facilitate organized cable routing:

- **Separate Cable Types:** Whenever possible, separate power cables from data cables to minimize electromagnetic interference.
- **Use Cable Fingers:** Route cables through the individual fingers of the manager. This provides support and prevents cables from sagging or obstructing airflow.
- **Avoid Tight Bends:** Ensure cables are not bent too sharply, especially fiber optic cables, to prevent damage and signal loss.
- **Leave Service Loops:** Allow for a small amount of slack (service loop) in cables to facilitate future maintenance or equipment changes without disconnecting other devices.
- **Secure with Ties:** Use hook-and-loop cable ties (not included) to bundle cables within the manager for additional neatness and security. Avoid using plastic zip ties that can overtighten and damage cables.

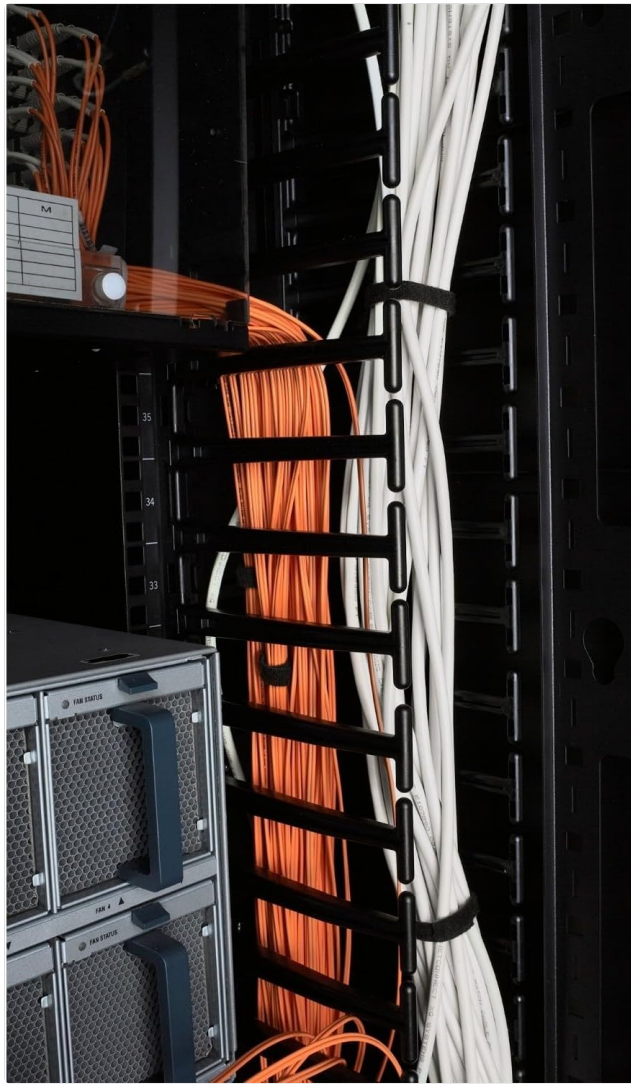


Figure 5: An example of well-managed cables within a rack, utilizing the AR7580A for vertical organization.

7. MAINTENANCE

The APC AR7580A Vertical Cable Manager requires minimal maintenance to ensure continued performance:

- **Regular Inspection:** Periodically inspect the cable managers for any signs of damage, loose mounting, or excessive cable buildup.
- **Cleaning:** Dust and debris can accumulate over time. Use a soft, dry cloth to wipe down the surfaces of the cable manager. For stubborn dirt, a slightly damp cloth can be used, ensuring no moisture enters sensitive equipment.
- **Cable Reorganization:** As equipment changes or additions occur, review and reorganize cables as needed to maintain optimal airflow and accessibility.

8. TROUBLESHOOTING

Most issues related to cable management can be resolved by reviewing installation and routing practices.

- **Cable Congestion:** If cables are too tightly packed, they can impede airflow and make future maintenance difficult. Re-route cables, potentially utilizing additional cable management accessories if necessary.
- **Loose Manager:** If the cable manager feels loose, check all mounting screws and ensure they are securely tightened.
- **Damaged Cables:** If cables appear pinched or damaged, inspect the routing path and ensure no sharp edges or excessive pressure points are present. Replace damaged cables immediately.

9. SPECIFICATIONS

Attribute	Value
Brand	APC
Model Number	AR7580A
Product Dimensions	37.75 x 6.5 x 8 inches (95.89 x 16.51 x 20.32 cm)
Item Weight	9.9 pounds (4.49 kg)
Color	Black
Material	Plastic
Compatible Devices	Server (Netshelter Racks)
Quantity	2

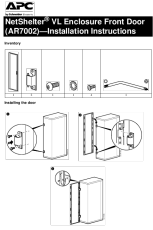

10. WARRANTY AND SUPPORT

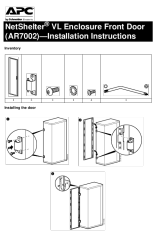
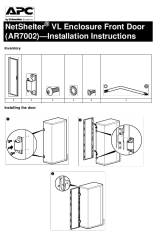
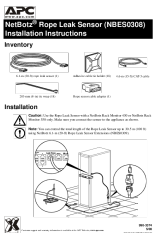

For warranty information or technical support regarding your APC AR7580A Vertical Cable Manager, please refer to the official APC website or contact APC customer service directly. Keep your purchase receipt and product model number (AR7580A) available when contacting support.

APC Customer Support: www.apc.com/us/en/support/



Related Documents - AR7580A

	<p>APC NetShelter VL Enclosure Front Door AR7002 Installation Guide</p> <p>Comprehensive installation guide for the APC NetShelter VL Enclosure Front Door (AR7002). Learn how to install, remove, and reverse the door with step-by-step instructions and detailed diagram descriptions.</p>
	<p>APC NetShelter AR1000, AR1001, AR1100 Installation and User Manual</p> <p>This manual provides detailed instructions for the installation, setup, and maintenance of American Power Conversion (APC) NetShelter rack enclosures, including models AR1000, AR1001, and AR1100. It covers product inventory, warnings, configuration, leveling, stabilization, and warranty information.</p>

	<p>APC NetShelter VL AR7002 Front Door Installation Instructions Schneider Electric</p> <p>Detailed installation instructions for the APC NetShelter VL AR7002 Front Door. Learn how to install, remove, and reverse the door for your enclosure.</p>
	<p>APC NetShelter VL Enclosure Front Door AR7002 Installation Instructions</p> <p>Comprehensive installation guide for the APC NetShelter VL Enclosure Front Door (AR7002). Covers inventory, door installation, removal, and reversal procedures with detailed textual descriptions of diagrams.</p>
	<p>APC NetBotz Rope Leak Sensor NBES0308 Installation Guide</p> <p>Installation instructions for the APC NetBotz Rope Leak Sensor (NBES0308), detailing inventory, setup, and connection requirements for NetBotz Rack Monitors 450 and 550.</p>
	<p>APC Smart-UPS 1200/1500 VA Installation Guide</p> <p>This installation guide provides essential safety instructions and step-by-step procedures for installing APC Smart-UPS 1200/1500 VA Rack-Mount 1U units. Learn about product features, battery safety, and rack installation.</p>