

The ONE SP-PLAY

The ONE Digital Piano (Model SP-PLAY) Instruction Manual

Comprehensive guide for setup, operation, and maintenance of your The ONE Digital Piano.

INTRODUCTION

Welcome to the world of The ONE Digital Piano. This instrument combines the authentic feel of 88 hammer-action keys with smart teaching technology, designed for both beginners and experienced musicians. This manual provides essential information for setting up, operating, and maintaining your digital piano to ensure optimal performance and an enriching musical experience.

1. SETUP

1.1 Unboxing and Assembly

Your The ONE Digital Piano is designed for straightforward assembly. Carefully unpack all components and follow the instructions below.

54 in
length

34 in
width

18 in
height

116.8 lb
weight

What You Get

Home digital piano*1

Tool kit*1

Power cord*1

Cable*1

User guide*1



Figure 1: Included Components. The package contains the main piano unit, stand components, a three-pedal unit, power adapter, and user manual.

1. **Unpack Components:** Carefully remove all parts from the packaging. Verify that all components listed in the "What You Get" section are present.
2. **Assemble the Stand:** Attach the side panels to the crossbar using the provided screws and tools. Ensure all connections are secure.
3. **Attach the Pedal Unit:** Secure the three-pedal unit to the assembled stand.
4. **Place the Piano Unit:** With assistance, carefully lift the main piano unit and place it onto the assembled stand, aligning the mounting points. Secure it with the remaining screws.
5. **Connect Pedals and Power:** Locate the pedal cable and power input on the underside or rear of the piano unit. Connect the pedal cable to the designated port and plug in the power adapter.

1.2 Initial Power On and App Connection

Once assembled and powered, connect your digital piano to The ONE Smart Piano app for enhanced learning and control features.

1. **Power On:** Press the power button on the piano's control panel.
2. **Download App:** Download "The ONE Smart Piano" app from your device's app store (available on Windows, macOS, iOS, Android).
3. **Connect via Bluetooth/USB:**
 - **Bluetooth:** Enable Bluetooth on your smart device. Open the app, navigate to connection settings, and select your piano model.
 - **USB:** Connect your smart device to the piano using a compatible USB cable. The app should automatically detect the connection.

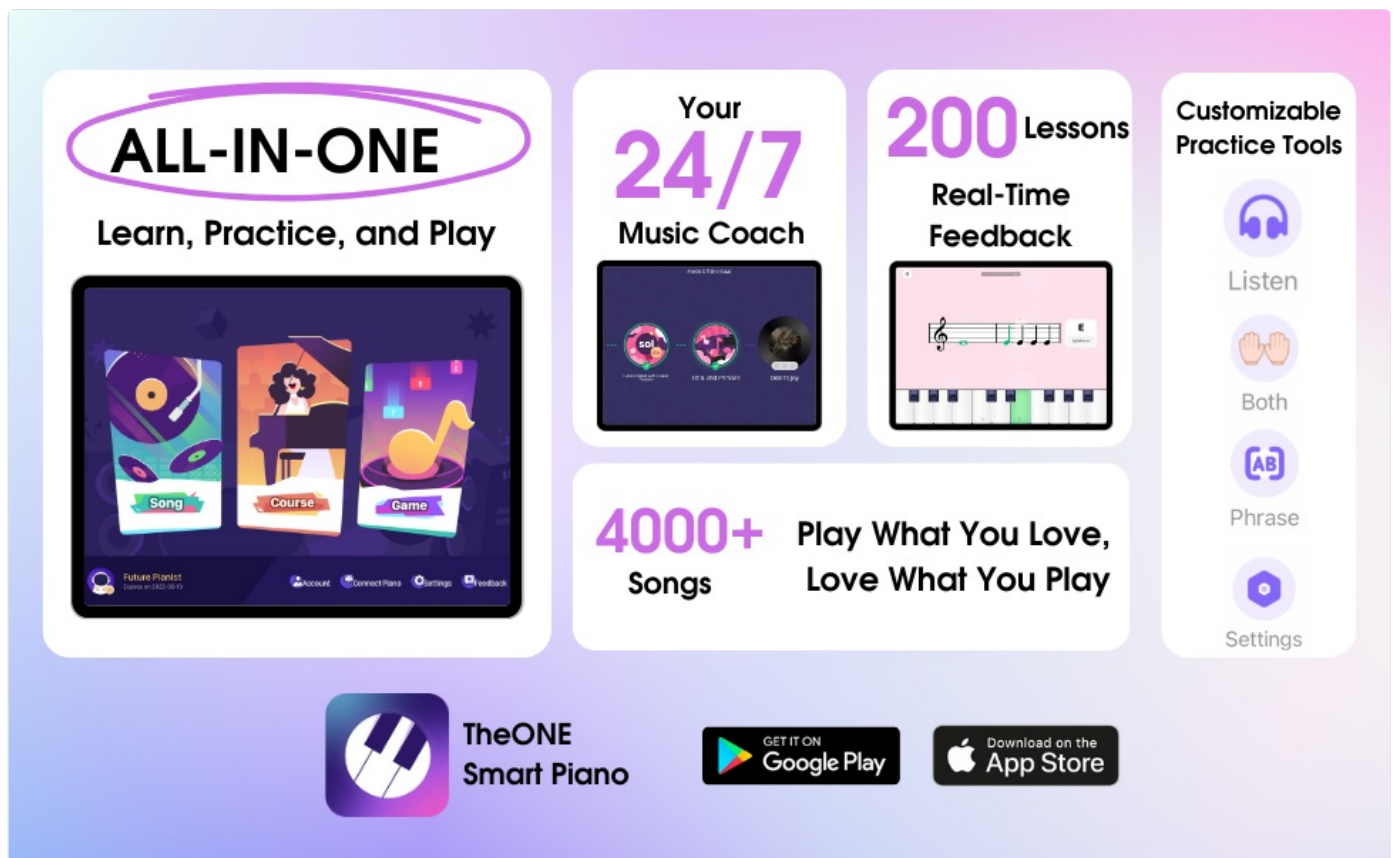


Figure 2: The ONE Smart Piano App Interface. The app provides a comprehensive suite of learning and practice tools.

2. OPERATING YOUR DIGITAL PIANO

2.1 Key Features and Feel

Experience the authentic touch and innovative learning aids of your digital piano.

88 Hammer Action Keys

Full size 88 keys with graded hammer action and touch response

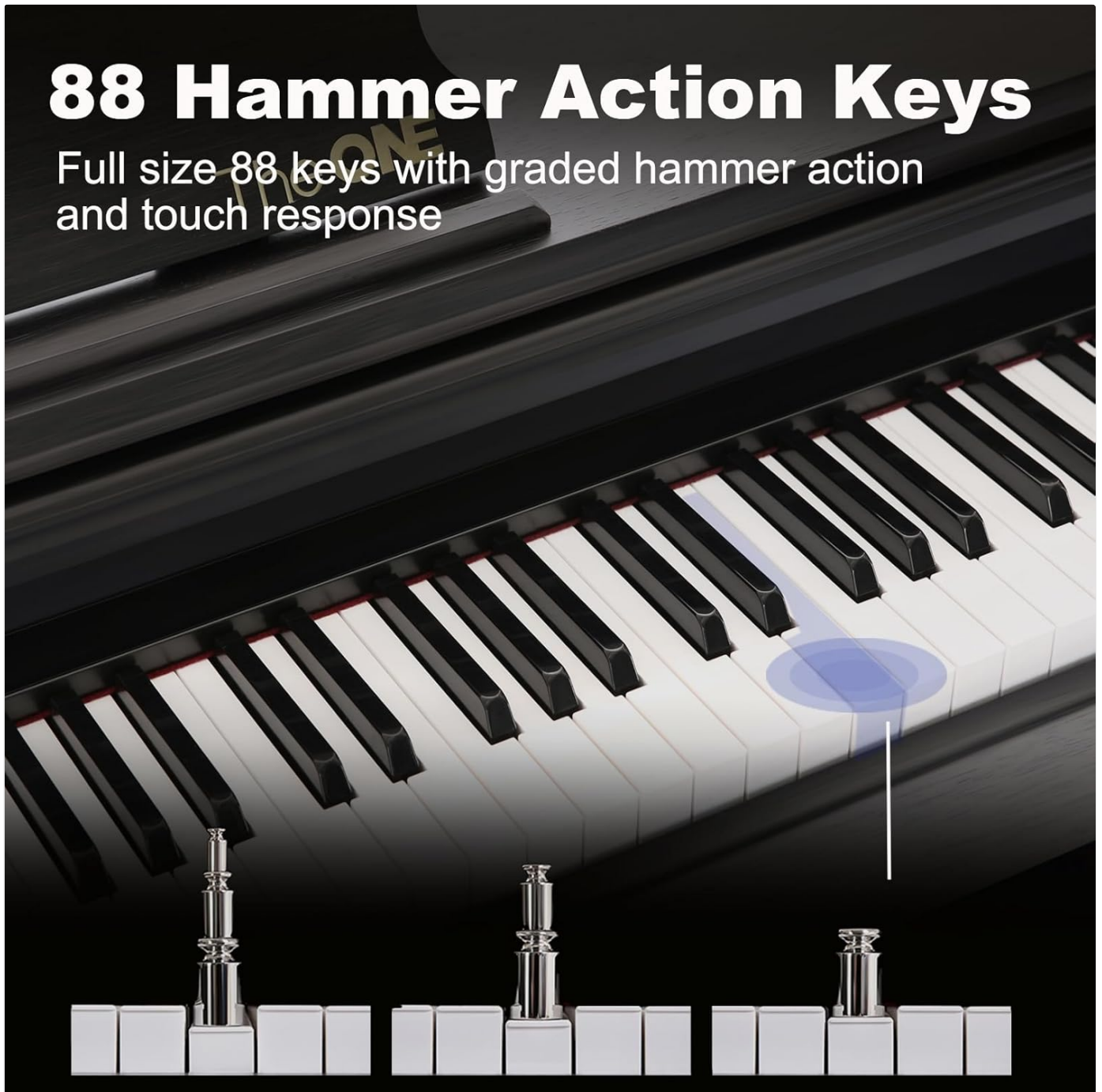


Figure 3: 88 Hammer Action Keys. The keys are weighted, providing a realistic piano feel, with heavier resistance in the lower register and lighter in the higher register.

- **88 Hammer Action Keys:** The piano features 88 progressive weighted keys that simulate the feel of an acoustic grand piano, with heavier keys in the low end and lighter keys in the high end.
- **Lighted Keys:** Integrated LED lights above the keys synchronize with the app's music scores, guiding beginners to play their first songs quickly.
- **Touch Sensitivity:** The keys are touch-sensitive, allowing for expressive playing dynamics.

2.2 Sound and Audio Controls

Your digital piano is equipped with high-quality sound reproduction and versatile audio options.

Excellent Sound



4 High-end speakers
(2*20W 2*25W)



High/Low
crossover system



1:1 Grand piano
sound sampled



Surround stereo



Figure 4: Outstanding Sound Quality. Features include 4 Hi-Fi speakers and grand piano sound sampling for a rich audio experience.

- **Built-in Speakers:** Four Hi-Fi speakers (two 20W tweeters and two 25W woofers) provide rich, grand piano sound.
- **Tones and Polyphony:** Access 426 different tones and 64-note polyphony for diverse musical expression.
- **Volume Control:** Adjust the master volume using the dedicated knob on the control panel.
- **Metronome:** Use the built-in metronome with adjustable tempo for practice.
- **Dual Headphone Jacks:** Two 3.5mm headphone jacks allow for private practice or duet sessions without disturbing others.
- **AUX In/Out:** Connect external audio devices via the AUX in/out ports.



Figure 5: Control Panel. Adjust Master Volume, Tempo, and activate the Metronome from here.

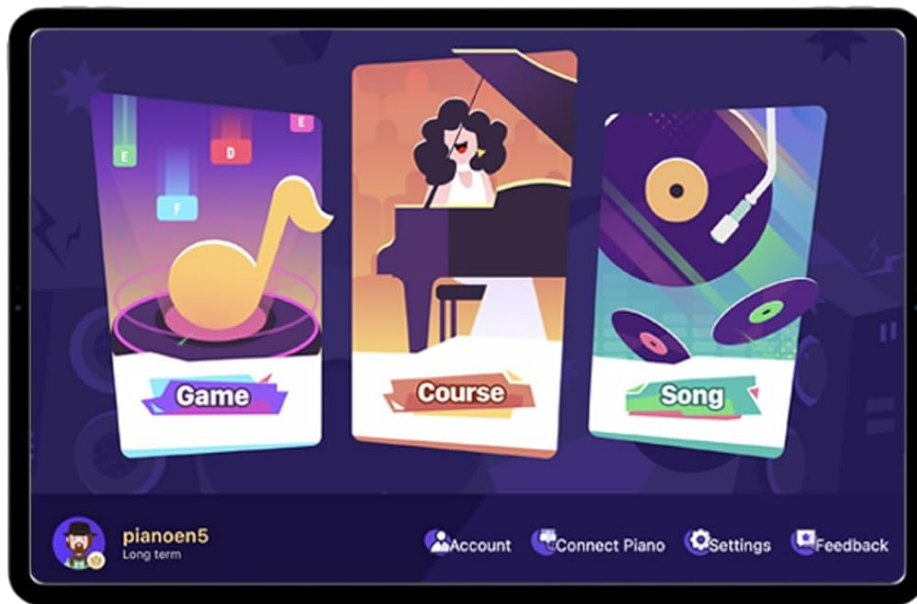
2.3 App-Controlled Features

The ONE Smart Piano app unlocks the full potential of your digital piano, offering interactive learning and creative tools.

- **Interactive Lessons:** Access integrated video lessons and piano games that synchronize with the light-up keys.
- **Music Library:** Explore a vast library of 4,000 music scores and 100 instructional videos.
- **Recording:** Record your performances directly through the app.
- **Dual Keyboard Mode:** Split the keyboard into two identical ranges, ideal for teacher-student interaction.
- **USB-MIDI:** Connect to a computer for MIDI editing and music production.

Free Learning App

Includes 4000 sheet music, 100 instructional videos, games and more



Smart Piano

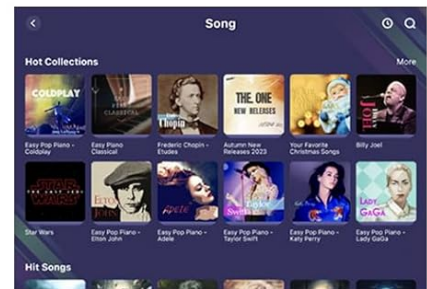
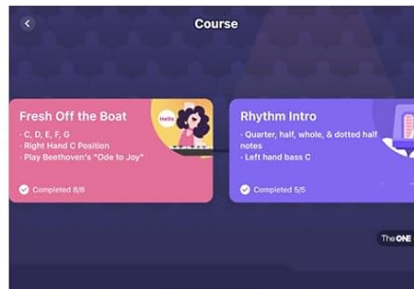


Figure 6: Free Learning App. The app provides access to games, courses, and a song library.

3. MAINTENANCE

Proper care ensures the longevity and optimal performance of your digital piano.

- **Cleaning:** Use a soft, dry cloth to wipe the piano's surface and keys. Avoid abrasive cleaners or solvents.
- **Environmental Conditions:** Keep the piano away from direct sunlight, extreme temperatures, and high humidity to prevent damage to the wood and electronic components.
- **Dust Protection:** When not in use, cover the piano with a dust cover to protect the keys and internal mechanisms.

4. TROUBLESHOOTING

If you encounter any issues, refer to the following common troubleshooting steps:

- **No Sound:**
 - Ensure the piano is powered on and the volume is turned up.
 - Check if headphones are plugged in. If so, unplug them or adjust the headphone volume.

- Verify that external speakers (if used) are properly connected and powered.

- **App Connectivity Issues:**

- Ensure Bluetooth is enabled on your device and the piano.
- Restart both the piano and your smart device.
- Try connecting via a USB cable if Bluetooth fails.
- Update the app to the latest version.

- **Keys Not Responding:**

- Power cycle the piano.
- Ensure no foreign objects are lodged between the keys.

For further assistance, please contact The ONE customer support.

5. SPECIFICATIONS

Feature	Detail
Brand	The ONE
Model Name	SP-PLAY
Number of Keys	88
Key Type	Hammer Action, Weighted, Lighted, Touch-Sensitive
Dimensions (D x W x H)	54.3" x 18.1" x 33.1"
Item Weight	21 Pounds
Color	Black
Material Type	Wood
Connectivity	Bluetooth, USB, 3.5mm Jack (AUX In/Out, Headphones)
Power Source	Corded Electric
Supported Software	The ONE Smart Piano App
Operating Systems	Windows, macOS, iOS, Android
Special Features	Built-In Speaker, Hammer Action, Headphone Jack, Lighted Keys, Touch-Sensitive Keys



54.3in
Length

18.1in
Width

33.1in
Hight

106.9lbs
Net Weight

Figure 7: Product Dimensions and Weight.

6. SUPPORT AND WARRANTY

The ONE is committed to providing excellent customer service.

- **Customer Service:** For any concerns regarding your product or the app, please contact The ONE's dedicated after-sales service team.
- **Warranty Information:** Specific warranty details are typically provided with your purchase documentation. Please refer to the warranty card or contact customer support for more information.

7. PRODUCT VIDEOS

Explore these official videos to learn more about your The ONE Digital Piano.

7.1 The ONE 88-Key Home Digital Piano Overview

Your browser does not support the video tag.

This video provides a concise overview of The ONE 88-key Home Digital Piano, showcasing its hammer-action keys and design. (Duration: 0:30)

7.2 The ONE Smart Piano Introduction

Your browser does not support the video tag.

An introductory video to The ONE Smart Piano, highlighting its key features and smart capabilities. (Duration: 2:23)

7.3 Inspire Your Music Dream by The ONE

Your browser does not support the video tag.

This video showcases how The ONE Digital Piano can inspire musical learning and creativity. (Duration: 3:52)

7.4 Pianist Lang Lang Uses The ONE Digital Piano

Your browser does not support the video tag.

Watch renowned pianist Lang Lang demonstrate The ONE Digital Piano. (Duration: 1:27)