

## Manuals+

[Q & A](#) | [Deep Search](#) | [Upload](#)

manuals.plus /

- › [Mohu](#) /
- › [Mohu Leaf 50 Amplified Indoor HDTV Antenna User Manual](#)

## Mohu MH-110584

# Mohu Leaf 50 Amplified Indoor HDTV Antenna User Manual

Model: MH-110584

## INTRODUCTION

Welcome to the Mohu Leaf 50 Amplified Indoor HDTV Antenna user manual. This guide provides detailed instructions for installing, operating, and maintaining your antenna to receive free over-the-air television broadcasts. The Mohu Leaf 50 is designed to deliver clear high-definition picture and sound, utilizing a Jolt in-line amplifier for enhanced signal reception up to a 60-mile range.

## WHAT'S INCLUDED

- Mohu Leaf 50 Amplified Antenna
- 12 ft. Detachable High-Performance Coaxial Cable
- Jolt Switch 18 dB In-Line Amplifier with 6 ft. USB Cable
- USB Power Adapter
- Hook & Loop Tabs
- Push Pins
- Instruction Manual (this document)



Image: The Mohu Leaf 50 antenna and all its included components, including the flat antenna, coaxial cable, Jolt Switch amplifier, and power adapter.

## SETUP GUIDE

---

### Step 1: Plan Antenna Placement

Use a free antenna signal locator app (e.g., Antenna Point) to identify the location of broadcast towers relative to your home. This will help determine the optimal placement for your antenna.



Image: A black Mohu Leaf 50 antenna mounted on a window, overlooking a city skyline, illustrating optimal placement for signal reception.

### Step 2: Connect the Antenna

Connect the 12 ft. coaxial cable to the antenna's F-connector port.

### Step 3: Connect the Jolt Switch Amplifier

Attach the other end of the coaxial cable to the Jolt Switch 18 dB in-line amplifier. This amplifier boosts the signal for better reception.

### Step 4: Power the Amplifier

Connect the USB cable from the Jolt Switch amplifier to a USB port on your television or to the included USB power adapter, then plug the adapter into a wall outlet.

### Step 5: Connect to TV

Connect the amplifier's coaxial output to the "Antenna In" or "Cable In" port on the back of your television.

### Step 6: Mount the Antenna

Position the antenna in the location identified in Step 1. The antenna can be mounted on a wall or window using the provided hook & loop tabs or push pins. Optimal placement is often near a window and as high as possible.



Image: A black Mohu Leaf 50 antenna is mounted on a light-colored wall to the right of a large flat-screen television, which is displaying a green screen with the Mohu logo.

## OPERATING INSTRUCTIONS

---

### Scanning for Channels

After connecting the antenna, you must perform a channel scan on your television to find available over-the-air broadcasts.

1. Turn on your television and select the correct input source (usually "TV" or "Antenna").
2. Navigate to your TV's "Settings" or "Setup" menu.
3. Look for an option like "Channel Scan," "Auto Program," "Auto Tune," or "Antenna Setup."
4. Select "Antenna" or "Air" as the signal source, not "Cable."
5. Start the channel scan. This process may take several minutes.
6. Once the scan is complete, your TV will display the channels it found.

Refer to your television's user manual for specific instructions on how to perform a channel scan.

## PLACEMENT TIPS FOR OPTIMAL RECEPTION

---

- **Higher is Better:** Place the antenna as high as possible, ideally on an upper floor or attic.
- **Near a Window:** Windows often provide the best line of sight to broadcast towers.
- **Experiment with Orientation:** Try different positions and orientations (flat on a wall, behind the TV, on a window) and re-scan for channels after each adjustment to find the best signal.
- **Avoid Obstructions:** Large metal objects, concrete walls, and other electronic devices can interfere with the signal.
- **Check Signal Strength:** Some TVs have a signal strength meter in their settings menu, which can help you fine-tune placement.

## TROUBLESHOOTING

---

### No Channels Found or Poor Reception

- **Re-scan for Channels:** Always perform a channel scan after moving the antenna or if you experience reception issues.
- **Check Connections:** Ensure all cables are securely connected to the antenna, amplifier, and TV.
- **Reposition Antenna:** Try moving the antenna to a different location, especially higher up or closer to a window. Re-scan after

- each move.
- **Check Amplifier Power:** Verify that the Jolt Switch amplifier is powered (either via TV USB or wall adapter).
  - **Verify TV Input:** Make sure your TV is set to the correct input (Antenna/Air).
  - **External Interference:** Large appliances, LED lights, or other electronic devices can cause interference. Try moving the antenna away from such sources.
  - **Weather Conditions:** Severe weather can temporarily affect signal reception.

### Pixelated Picture or Audio Dropouts

- This often indicates a weak signal. Try repositioning the antenna and re-scanning for channels.
- Ensure the amplifier is correctly connected and powered.

### Missing Specific Channels

- Some channels may broadcast from different directions. Try rotating the antenna slightly and performing another channel scan.
- Use an antenna locator app to confirm the direction of the missing channel's broadcast tower.

## SPECIFICATIONS

| Feature              | Detail  |
|----------------------|---|
| Brand                | Mohu  |
| Model Number         | MH-110584   |
| Item Weight          | 9 ounces  |
| Product Dimensions   | 0.04 x 11.5 x 10 inches   |
| Color                | White, Black (Reversible)   |
| Special Features     | Dual Band, Full HD, Low Profile, Multidirectional, Signal Booster, Wall Mount |
| Impedance            | 75 Ohm  |
| Maximum Range        | 60 Miles  |
| Antenna Type         | Indoor TV Antenna   |
| Frequency Support    | UHF, VHF  |
| Amplifier            | Jolt Switch 18 dB In-Line Amplifier   |
| Coaxial Cable Length | 12 ft.  |

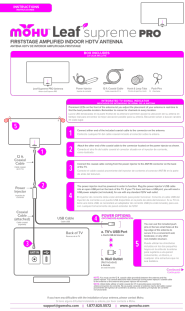
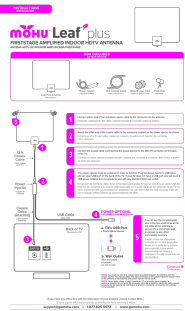
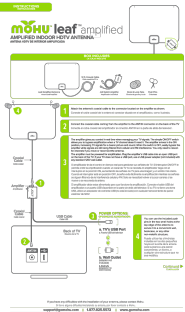
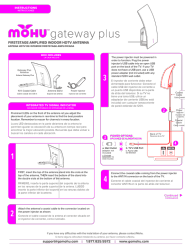
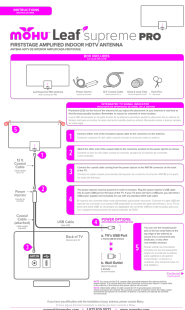
## MAINTENANCE

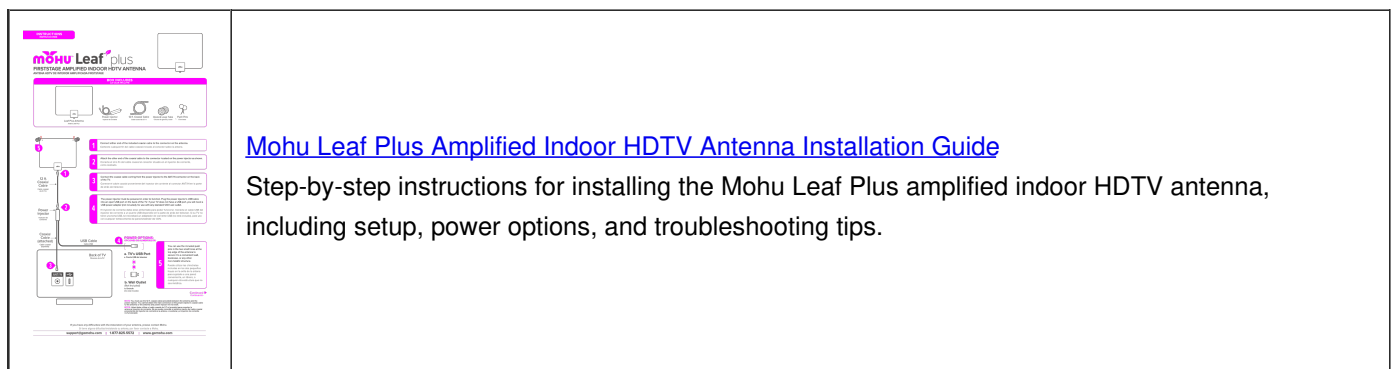
- **Cleaning:** Wipe the antenna gently with a soft, dry cloth. Do not use harsh chemicals or abrasive cleaners.
- **Cable Care:** Avoid kinking or sharply bending the coaxial cable, as this can damage the internal wiring and affect signal quality.
- **Indoor Use Only:** This antenna is designed for indoor use. Exposure to outdoor elements can damage the unit and void the warranty.

## WARRANTY AND SUPPORT

The Mohu Leaf 50 Amplified Indoor HDTV Antenna comes with a one-year manufacturer warranty. For warranty claims, technical support, or additional assistance, please visit the official Mohu website or contact their customer service.  
Official Mohu Website: [www.gomohu.com](http://www.gomohu.com)

Related Documents - MH-110584

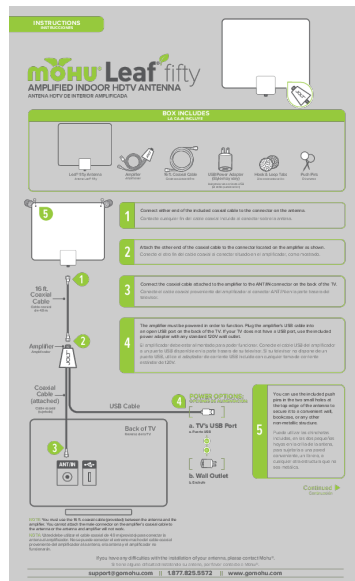
|   |  |
|---|--|
|    | <p><a href="#">Mohu Leaf Supreme PRO Amplified Indoor HDTV Antenna Instructions</a></p> <p>Step-by-step instructions for setting up the Mohu Leaf Supreme PRO amplified indoor HDTV antenna, including box contents, connection guide, power options, and troubleshooting tips.</p>      |
|   | <p><a href="#">Mohu Leaf Plus Amplified Indoor HDTV Antenna Installation Guide</a></p> <p>Step-by-step instructions for installing the Mohu Leaf Plus amplified indoor HDTV antenna, including setup, power options, and troubleshooting tips.</p>                                       |
|  | <p><a href="#">Mohu Leaf Amplified Indoor HDTV Antenna Installation Guide</a></p> <p>Instructions for installing and using the Mohu Leaf Amplified Indoor HDTV Antenna. Learn how to connect the antenna, power the amplifier, scan for channels, and troubleshoot reception issues.</p> |
|  | <p><a href="#">Mohu Gateway Plus Amplified Indoor HDTV Antenna Installation Guide</a></p> <p>Step-by-step instructions and troubleshooting tips for installing the Mohu Gateway Plus Amplified Indoor HDTV Antenna (Model GATEWAYXG).</p>  |
|  | <p><a href="#">Mohu Leaf Supreme PRO Amplified Indoor HDTV Antenna Instructions</a></p> <p>Step-by-step instructions for setting up the Mohu Leaf Supreme PRO amplified indoor HDTV antenna, including box contents, connection guide, power options, and troubleshooting tips.</p>      |



## Mohu Leaf Plus Amplified Indoor HDTV Antenna Installation Guide

Step-by-step instructions for installing the Mohu Leaf Plus amplified indoor HDTV antenna, including setup, power options, and troubleshooting tips.

Documents - Mohu – MH-110584



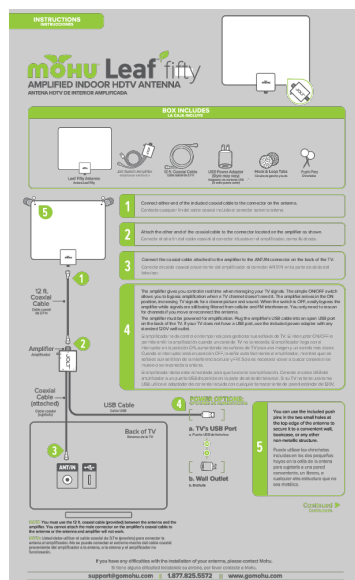
### [pdf] Instructions

Mohu Leaf 50 Amplified Indoor antenna how to assemble and installation the MH 110584 LEAF50 QS

20200417 gomohu 2020 04

, INSTRUCCIONES INSTRUCCIONES m0HU Leaf fifty AMPLIFIED INDOOR HDTV ANTENNA ANTENA HDTV DE INTERIOR A ... por la ley, y dichas garantas implcitas se limitan al plazo de un 1 ao de esta garanta. MODEL # **MH-110584** If you have any diculties with the installation of your antenna, please contact Mohu. Si t...

lang:es score:38 filesize: 193.8 K page\_count: 2 document date: 2021-03-05



### [pdf] Instructions

MH 110584 LEAFFIFTY QS 20211123 Mohu Instructions files bbystatic n9CcPE6 VB4EDACSQNiSiQ |||

TM TM ANT PWR TV Jolt Switch Amplifier Amplificador Jolt Switch Connect either end of the included coaxial cable to the connector on the antenna. Contecte cualquier fin del cable coaxial incluido al conector sobre la antena. Attach the other end of the coaxial cable to the connector located on t...

lang:es score:36 filesize: 624.37 K page\_count: 2 document date: 2021-11-23



[pdf]

LEAFFIFTY sellsheet 20240415 Sell Spec Sheet Mohu Leaf 50 Original Paper Thin Indoor TV Antenna

Amplified UHF VHF 60 Mile Range Multi Directional 4K UHD NEXTGEN with 12 Ft Cable

4fb0158ec55472c8aa210f626bac509110cd9233 spec 1 MHUMH110584 petra attachment 9699245

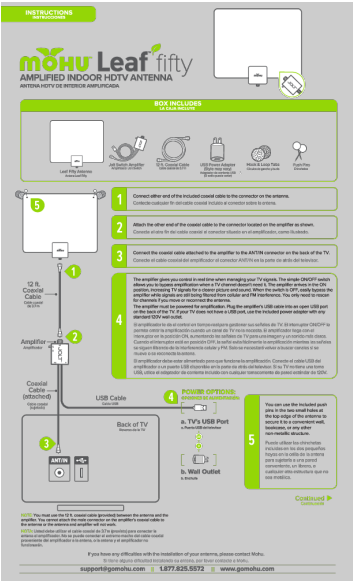
667218c4a1f85704502806 |||

Leaf 50 AMPLIFIED INDOOR HDTV ANTENNA 60 Often imitated, never really duplicated Launched in 201 ... ing technology developed in the U.S.A. Full HD 1080p,

4K, 8K UHD, and NEXTGEN TV compatible Model: **MH-110584** UPC: 854449004101

Range: 60 Miles Location: Indoor Style: Multi-Directional Frequencies:...

lang:en score:24 filesize: 938.42 K page\_count: 1 document date: 2024-04-17



[pdf] User Manual

MH 110584 LEAFFIFTY QS FINAL 20221207 ai Product Manual Mohu Leaf 50 Original Paper Thin Indoor

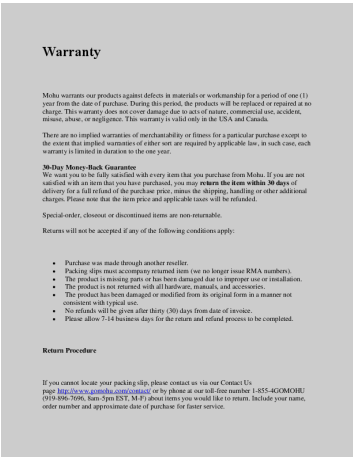
TV Antenna Amplified UHF VHF 60 Mile Range Multi Directional 4K UHD NEXTGEN with 12 Ft Cable

e26767bc0ee36438b49b1e8571ad1f078a96ceb1 manual 1 MHUMH110584 petra attachment 9699244

667218c49a22a516206568 |||

...

lang:en score:23 filesize: 3.62 M page\_count: 2 document date: 2022-12-07



[pdf] Warranty

Click here Amazon Mohu Leaf 50 Amplified Indoor TV Antenna 60 Mile Range UHF VHF Multi directional

Paper Thin 16 ft Coaxial Cable 15dB Amplifier with USB Reversible Paintable 4K Ready HDTV MH

110584 Everything Else Product Warranty For warranty information about this product please

71ZbL9EhpuS m media amazon images I |||

Warranty Mohu warrants our products against defects in materials or workmanship for a period of one 1 year from the date of purchase. During this period, the products will

be replaced or repaired at no charge. This warranty does not cover damage due to

acts of nature, commercial use, accident, mis...

lang:en score:20 filesize: 184.53 K page\_count: 2 document date: 2015-03-16