

Diesel DZ4290

Diesel Men's Mega Chief Chronograph Watch DZ4290 Instruction Manual

Model: DZ4290

INTRODUCTION

This manual provides essential instructions for the proper use, setup, and maintenance of your Diesel Men's Mega Chief Chronograph Watch, Model DZ4290. Please read this manual thoroughly to ensure optimal performance and longevity of your timepiece.



Image: Front view of the Diesel Mega Chief Chronograph Watch, featuring a dark grey dial with three sub-dials, silver-tone case, and a brown leather strap.

KEY FEATURES

- **Chronograph Movement:** Quartz movement with analog display, including three sub-dials for tracking minutes, seconds, and 24-hour time. Features stopwatch functionality.
- **Date Window:** Displays the current date.
- **Durable Construction:** Stainless steel case with a unique crown guard and a mineral crystal face designed to resist scratches.

- **Water Resistance:** Rated up to 100 meters (330 feet), suitable for bathing, swimming, snorkeling, and shallow diving.
- **Band:** 26mm brown genuine leather band with an adjustable buckle closure.

SETUP

Before wearing your watch, ensure the time and date are correctly set.

Setting the Time

1. Pull the crown (the knob on the side of the watch) out to Position 2. The second hand will stop.
2. Rotate the crown to move the hour and minute hands until the desired time is displayed.
3. Push the crown back into Position 0 to restart the watch.

Setting the Date

1. Pull the crown out to Position 1.
2. Rotate the crown clockwise or counter-clockwise (depending on the movement) until the correct date appears in the date window.
3. Once the date is set, push the crown back into Position 0.

OPERATING THE CHRONOGRAPH

Your Mega Chief watch features a chronograph function for measuring elapsed time.

Chronograph Functions

- **Start/Stop:** Press the top pusher (button above the crown) to start the chronograph. Press it again to stop.
- **Reset:** While the chronograph is stopped, press the bottom pusher (button below the crown) to reset all chronograph hands to zero.
- **Sub-dials:** The three sub-dials track seconds, minutes, and 24-hour time, providing detailed elapsed time measurement.

Video: A 20-second demonstration of the Diesel Mega Chief Chronograph Watch rotating, showcasing its design and features from various angles.

MAINTENANCE

Proper care will help maintain the appearance and function of your watch.

- **Cleaning:** Wipe the watch regularly with a soft, dry cloth to remove dirt and moisture.
- **Water Resistance:** While water-resistant up to 10 ATM (330 feet), avoid operating the crown or pushers when the watch is wet or submerged to prevent water intrusion.
- **Temperature:** Avoid exposing your watch to extreme temperatures (hot or cold) or sudden temperature changes, as this can affect its accuracy and seals.
- **Shocks:** Protect your watch from strong impacts and vibrations.
- **Battery Replacement:** The watch uses 1 Lithium Ion battery. When the watch stops or the second hand moves erratically, it may be time for a battery replacement. It is recommended to have this done by a qualified watch technician to ensure water resistance is maintained.

Video: A 21-second close-up view of the Diesel Mega Chief Chronograph Watch, highlighting its dial details, crown, and pushers, and demonstrating the feel of the leather strap.

TROUBLESHOOTING

If you encounter any issues with your watch, refer to the following common solutions:

Problem	Possible Cause	Solution
Watch not running	Dead battery or crown not pushed in.	Ensure the crown is fully pushed into Position 0. If not, replace the battery.
Time/Date not setting	Crown not pulled to the correct position.	Refer to the "Setup" section to correctly pull the crown to Position 1 (date) or Position 2 (time).
Chronograph hands not resetting to zero	Requires manual adjustment.	Consult a professional watch repair service for chronograph hand alignment.

If the problem persists, please contact Diesel customer support.

SPECIFICATIONS

- **Model Number:** DZ4290
- **Case Diameter:** 51mm
- **Band Width:** 26mm
- **Movement:** Quartz Chronograph
- **Water Resistance:** 10 ATM (100 meters / 330 feet)
- **Case Material:** Stainless Steel
- **Band Material:** Calfskin Leather
- **Crystal Material:** Mineral
- **Battery:** 1 Lithium Ion battery (included)
- **Product Dimensions:** 0.59 x 0.59 x 0.59 inches; 4.73 ounces
- **First Available:** February 8, 2013

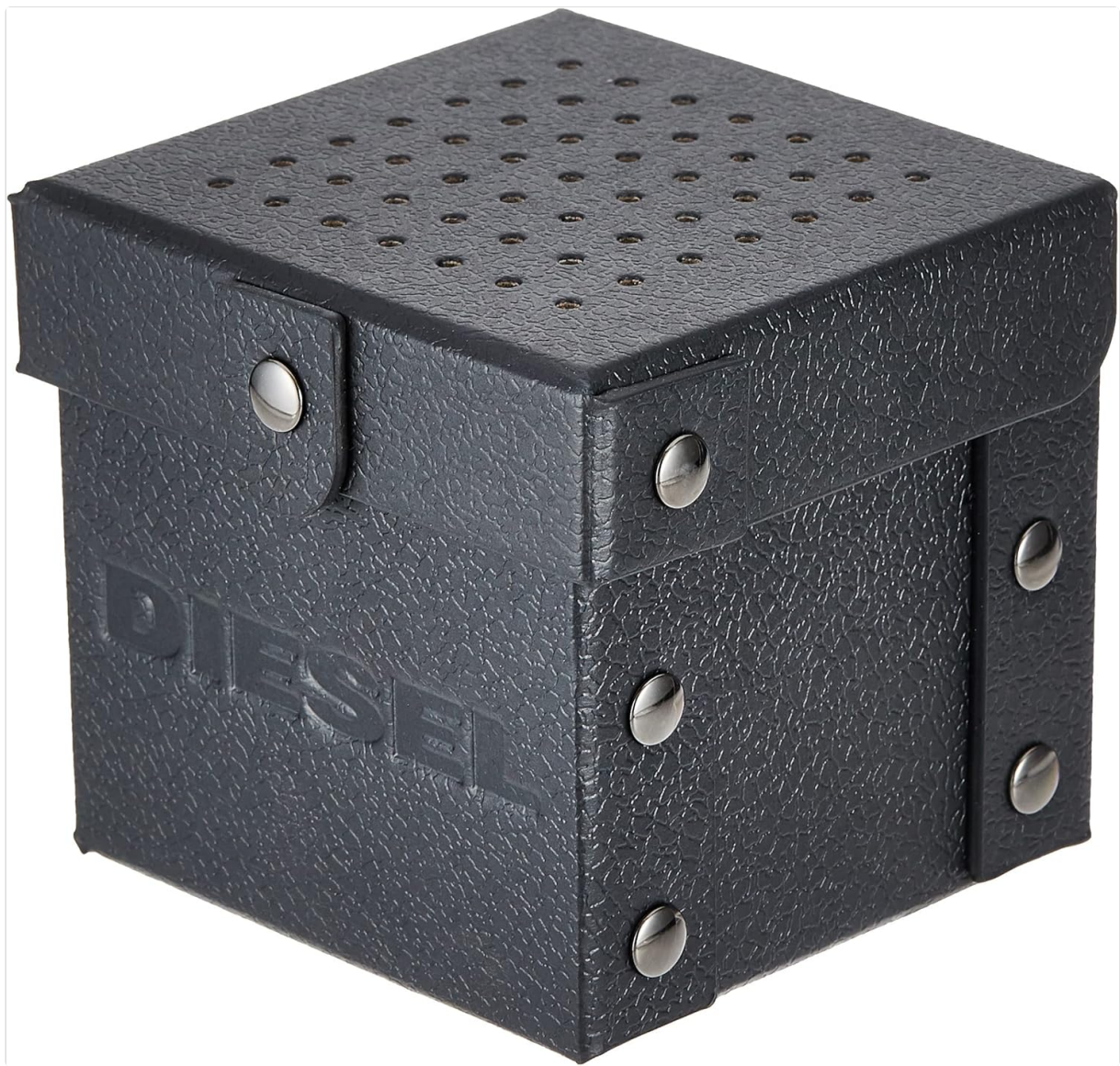


Image: The Diesel watch box, a black textured cube with the Diesel logo embossed, indicating the product's packaging.

WARRANTY AND SUPPORT

Your Diesel Mega Chief Chronograph Watch is designed for durability and performance. For any issues or inquiries, please refer to the following information:

Protection Plans

Optional protection plans are available for extended coverage:

- **2-Year Protection Plan:** One-time payment of \$26.99.
- **3-Year Protection Plan:** One-time payment of \$36.99.
- **Complete Protect:** Monthly billing at \$16.99, covering all eligible past and future purchases.

Return Policy

A 30-day return policy is available for this product when purchased from Amazon.

Customer Support

For technical assistance, warranty claims, or service, please visit the official Diesel website or contact their customer support directly. Ensure you have your model number (DZ4290) and proof of purchase available.

