

SCHLAGE BE469NXCAM619

SCHLAGE Z-Wave Connect Camelot Touchscreen Deadbolt with Built-In Alarm

Model: BE469 CAM 619 (Satin Nickel)

Brand: SCHLAGE

INTRODUCTION

The SCHLAGE Z-Wave Connect Camelot Touchscreen Deadbolt integrates advanced security features with smart home technology. This lock offers keyless entry through a modern touchscreen keypad and includes a built-in alarm system. Utilizing Z-Wave technology, it provides remote management capabilities and compatibility with various home monitoring systems. The fingerprint-resistant touchscreen enhances security by preventing number detection after repeated use.

Operating Temperatures: Outside escutcheon: -35°C to 66°C, Inside escutcheon: -10°C to 49°C.

SETUP

Installation

Installation of the deadbolt typically involves replacing an existing deadbolt. It is designed to fit standard door preparations. For optimal performance and security, professional installation is recommended. Ensure the door thickness is within the range of 1.37 to 1.75 inches.

Battery Installation

The lock operates on 4 AA alkaline batteries, which are included. To install or replace batteries, remove the interior cover. The lock will indicate when batteries are low by slowing down its operation or through your connected smart home system.

Z-Wave Pairing

To enable remote control and smart home integration, the deadbolt must be paired with a compatible Z-Wave hub (e.g., SmartThings, Wink, Iris). Refer to your Z-Wave hub's instructions for pairing procedures. Once paired, you can manage the lock via web or smartphone applications.

Video: Animated overview of Schlage Connect Z-Wave technology and features.

OPERATING INSTRUCTIONS

Locking the Deadbolt

- **From the exterior:** Press the 'SCHLAGE' button on the touchscreen keypad. The deadbolt will extend, securing the door.
- **From the interior:** Rotate the thumb turn to the locked position.
- **Auto-Lock:** The lock can be configured to automatically lock after a set period.

Unlocking the Deadbolt

- **Using a User Code:** Press the 'SCHLAGE' button to illuminate the keypad, then enter your personalized 4-8 digit user code. The deadbolt will retract.
- **Using a Key:** Insert the physical key into the cylinder and turn to unlock.
- **From the interior:** Rotate the thumb turn to the unlocked position.

Managing User Codes

The lock can store up to 30 personalized user codes. Refer to the detailed programming guide for adding, deleting, or modifying user codes. This can often be done through your connected Z-Wave smart home system for enhanced convenience.





Image: Front view of the Schlage Connect Touchscreen Deadbolt keypad in Satin Nickel. The keypad features illuminated numbers 0-9 and a central keyhole.

ALARM FEATURES

The Schlage Connect deadbolt includes a built-in alarm with three distinct alert settings. By default, the alarm is turned off. To program or change alarm settings, the alarm must first be powered on using the inside Schlage button.

Activating/Deactivating the Alarm

- **To Turn On:** Press and hold the inside 'SCHLAGE' button until the light flashes once (approx. 5 seconds). To confirm, press and release the button once; it will light up and beep.
- **To Turn Off:** Press and hold the inside 'SCHLAGE' button until the light flashes twice (approx. 6 seconds).

Alarm Modes

Your alarm can be set to three different modes:

- **Tamper Mode:** Responds to subtle vibrations or activity when the deadbolt is locked. The alarm is a 15-second sound with alternating flashing lights on both sides of the inside Schlage button.
- **Activity Mode:** Alarms every time the door opens or closes. Two short beeps will sound, and the center LED light on the inside Schlage button will flash. This mode is ideal for monitoring door usage while at home. After triggering, there is a 3-second delay before it resets.
- **Forced Entry Mode:** Responds when significant force is applied against the door while it is locked. A shrill, steady siren will sound for 3 minutes, and all lights on the Schlage button will flash. This mode is

suitable for nighttime or when you are away.

The alarm defaults to Forced Entry Mode every time it is powered on.

Changing Alarm Modes

Ensure your alarm is powered on before changing modes:

- **To set Tamper Mode:** Press and hold the inside 'SCHLAGE' button until the first flash (approx. 2 seconds). Then press and release the button until the middle LED is lit.
- **To set Activity Mode:** Press and hold the inside 'SCHLAGE' button until the first flash (approx. 2 seconds). Then press and release the button until the left side LED is lit.
- **To set Forced Entry Mode:** Press and hold the inside 'SCHLAGE' button until the first flash (approx. 2 seconds). Then press and release the button until the right side LED is lit.

Adjusting Sensitivity

You can adjust the sensitivity level for your lock from 1 to 5, where 1 is most sensitive and 5 is least sensitive. The default sensitivity level is 3. Only adjust if the alarm is sounding too frequently or not frequently enough.

- **To change sensitivity:** Press and hold the inside 'SCHLAGE' button until the third flash (approx. 10 seconds). Each time you tap the button, the alarm will beep, and the button will flash the same number of times as the current setting level. Keep tapping until the number of flashes/beeps matches your desired sensitivity setting.

Video: Detailed instructions on programming and adjusting the alarm features of the Schlage Touchscreen Deadbolt.

MAINTENANCE

Battery Replacement

The lock requires 4 AA alkaline batteries. When the batteries are low, the lock may operate slower or provide an alert through your connected smart home system. To replace, remove the interior cover, swap the old batteries with new ones, and reattach the cover.



Image: Interior view of the Schlage Connect Touchscreen Deadbolt, highlighting the battery compartment and thumb turn.

TROUBLESHOOTING

If you experience issues with your Schlage Connect deadbolt, consider the following:

- **Battery Check:** Ensure batteries are fresh and correctly installed. Low batteries can cause intermittent operation.
- **Z-Wave Connection:** Verify your lock is properly paired with your Z-Wave hub and that the hub is functioning correctly.
- **Alarm Sensitivity:** If the alarm is triggering too often or not enough, adjust its sensitivity as described in the Alarm Features section.

For further assistance, visit the official Schlage support website: answers.schlage.com

SPECIFICATIONS

Feature	Detail
---------	--------

Brand	SCHLAGE
Model Name	Camelot
Item Model Number	BE469NXCAM619
Lock Type	Keypad
Special Feature	Keyless Features, Built-in Alarm
Connectivity Protocol	Z-Wave
Controller Type	Amazon Alexa, Nexia, SmartThings, Vera, Wink
Material	Metal
Color	Satin Nickel
Power Source	Battery-powered (4 AA batteries included)
Item Weight	3.8 pounds
Product Dimensions	4.5 x 5.13 x 9.25 inches
ANSI Grade	Grade 1 Highest Residential Security

WARRANTY AND SUPPORT

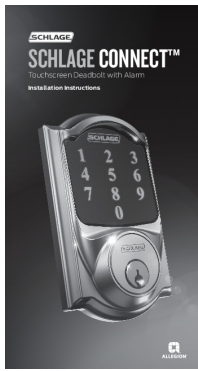
Warranty Information

The SCHLAGE Z-Wave Connect Camelot Touchscreen Deadbolt comes with a Lifetime Limited Mechanical & Finish Warranty and a 1-Year Electronics Warranty.

Customer Support

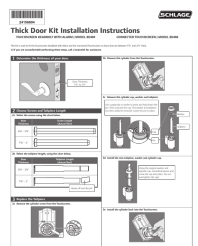
For product support, troubleshooting, or warranty claims, please visit the official SCHLAGE support website: answers.schlage.com

Related Documents - BE469NXCAM619



[Schlage Connect™ Touchscreen Deadbolt with Alarm Installation Instructions](#)

Comprehensive installation guide for the Schlage Connect™ Touchscreen Deadbolt with Alarm, detailing package contents, step-by-step setup, and troubleshooting for secure home access.



[Schlage Thick Door Kit Installation Instructions for Models BE469 and BE468](#)

Comprehensive installation guide for the Schlage Thick Door Kit, enabling the installation of BE469 Touchscreen Deadbolt with Alarm and BE468 Connected Touchscreen locks on doors with thicknesses ranging from 1 7/8 inches to 2 1/4 inches. Includes step-by-step instructions and visual descriptions.



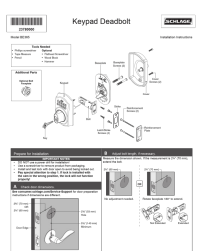
[Schlage BE469ZP Touchscreen Deadbolt: Enrollment and Deletion Guide](#)

Learn how to enroll and delete the Schlage BE469ZP Touchscreen Deadbolt from your Z-Wave network using Alarm.com. Includes compatibility information and step-by-step instructions.



[Schlage Connect Smart Deadbolt Quick Start Guide](#)

Quick start guide for installing and setting up the Schlage Connect Smart Deadbolt. Includes step-by-step instructions, parts list, troubleshooting, and code management.



[Schlage BE365 Keypad Deadbolt Installation Guide and Warranty](#)

Comprehensive installation instructions, testing procedures, programming information, and warranty details for the Schlage BE365 Keypad Deadbolt. Learn how to install, test, and program your Schlage lock.



[Schlage Sense™ Smart Deadbolt Installation Instructions](#)

This document provides detailed installation instructions for the Schlage Sense™ Smart Deadbolt, guiding users through the setup process, package contents, and initial testing. It includes essential notes and steps for a successful installation.