

Manuals+

[Q & A](#) | [Deep Search](#) | [Upload](#)

manuals.plus /

› [Syba](#) /

› [Syba SD-MPE40056 2 Port Mini PCIe to SATA III Controller Card User Manual](#)

Syba SD-MPE40056

Syba SD-MPE40056 2 Port Mini PCIe to SATA III Controller Card User Manual

Model: SD-MPE40056

[Introduction](#) [Package Contents](#) [Product Overview](#) [Features](#) [System](#)
[Requirements](#) [Installation](#) [Operation](#) [Driver](#)
[Installation](#) [Troubleshooting](#) [Specifications](#) [Maintenance](#) [Warranty & Support](#)

1. INTRODUCTION

This manual provides detailed instructions for the installation, operation, and troubleshooting of the Syba SD-MPE40056 2 Port Mini PCIe to SATA III Controller Card. This card is designed to expand your system's storage capabilities by adding two SATA III ports via a Mini PCI-Express slot. It utilizes the AsMedia ASM1061 chipset to deliver high-speed data transfer rates up to 6.0Gbps.

2. PACKAGE CONTENTS

Please verify that all items are present and in good condition upon opening the package:

- Mini PCI-Express SATA Controller Card
- User Manual (this document)
- Driver CD



Image: The Syba Mini PCIe SATA III Controller Card shown alongside its included Driver & Utility CD.

3. PRODUCT OVERVIEW

The Syba SD-MPE40056 is a compact expansion card designed to add two internal SATA III ports to systems equipped with a Mini PCI-Express slot. It is ideal for expanding storage in small form factor PCs, industrial computers, or other compatible devices. The card features two standard SATA data connectors and a Mini PCIe interface for connection to the motherboard.

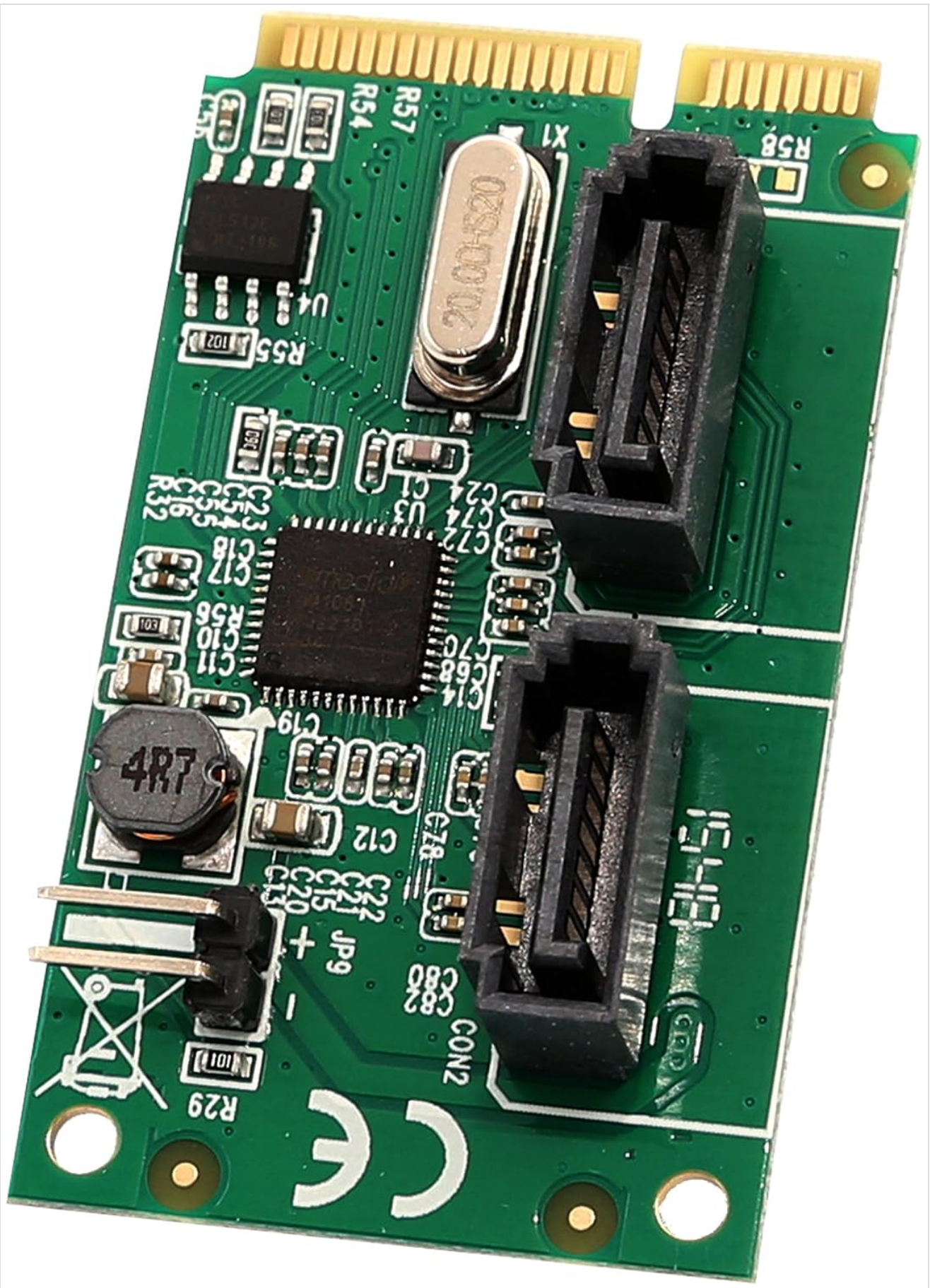


Image: Top-down view of the Syba Mini PCIe SATA III Controller Card, showing the two SATA ports and the main chipset.

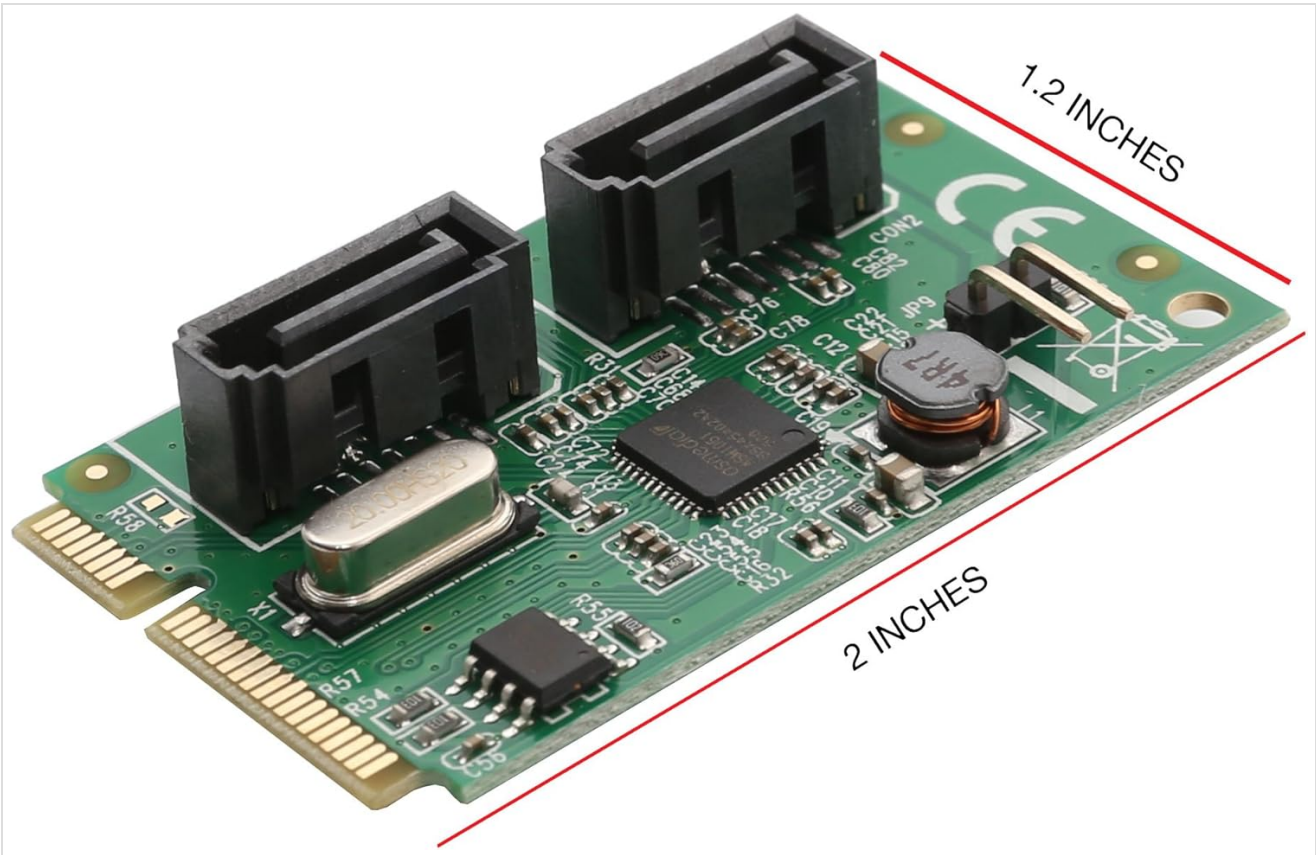


Image: The Syba Mini PCIe SATA III Controller Card with dimensions labeled, indicating its compact size of approximately 2 inches by 1.2 inches.

4. FEATURES

- Compliant with Serial ATA AHCI (Advanced Host Controller Interface) Specification Revision 1.0.
- Compatible with Full-Mini (F1) card Type form Factor.
- Supports SATA 3.0 transfer rates up to 6Gbps.
- Supports Native Command Queue (NCQ) for optimized performance.
- Supports Port Multiplier for connecting multiple SATA devices to a single host port (if supported by connected devices).
- PCI-Express 2.0 Base Specification Compliant.
- Designed for Mini-PCIe slots; **not compatible with standard PCIe slots.**

5. SYSTEM REQUIREMENTS

- Available Mini PCI-Express slot (Full-Mini F1 type).
- Operating System: Windows (various versions), macOS, or Linux.
- SATA data cables for connecting storage devices.
- Power cables for SATA storage devices.

6. INSTALLATION GUIDE

Follow these steps to properly install the Syba SD-MPE40056 controller card into your system:

1. **Power Off System:** Completely shut down your computer and disconnect the power cord from the wall outlet.
2. **Open Chassis:** Open your computer case to access the motherboard.
3. **Locate Mini PCIe Slot:** Identify an available Mini PCI-Express slot on your motherboard. Ensure it is a Full-

Mini (F1) type slot. **Note: This card is not designed for standard PCIe slots.**

4. **Insert Card:** Carefully align the gold contacts of the Syba Mini PCIe SATA card with the Mini PCIe slot. Gently push the card into the slot until it is fully seated.
5. **Secure Card:** Secure the card with the appropriate screw (typically a #4 screw, often not included with the card) to prevent it from dislodging.
6. **Connect SATA Devices:** Connect your SATA storage devices (HDDs, SSDs) to the SATA ports on the controller card using SATA data cables. Ensure power cables are also connected to your storage devices.
7. **Close Chassis:** Close your computer case and reconnect the power cord.
8. **Power On System:** Power on your computer.



Image: Rear view of the Syba Mini PCIe SATA III Controller Card, showing the model number SD-MPE40056 and serial number 15101602426 on a label.

7. OPERATING INSTRUCTIONS

Once the card is physically installed and the system is powered on, the operating system should detect the new hardware. For most modern operating systems (Windows, macOS, Linux), the card may be recognized automatically, and generic drivers might be installed. If not, manual driver installation will be required (refer to Section 8).

After successful driver installation, any connected SATA devices will appear in your operating system's Disk Management (Windows) or equivalent utility. You may need to initialize, partition, and format new drives before they can be used.

The card supports SATA 3.0 speeds (up to 6Gbps), Native Command Queuing (NCQ), and Port Multiplier functionality, enhancing the performance and flexibility of your connected storage devices.

8. DRIVER INSTALLATION

While many operating systems offer native support, for optimal performance or if the card is not automatically recognized, you may need to install the drivers manually.

1. **Insert Driver CD:** Insert the included Driver CD into your computer's optical drive.
2. **Locate Drivers:** Navigate to the appropriate folder on the CD for your operating system (e.g., Windows, macOS, Linux).
3. **Run Installer:** Execute the driver setup file (e.g., `setup.exe` for Windows) and follow the on-screen instructions.
4. **Manual Installation (if needed):** If an automatic installer is not available or fails, you may need to use your operating system's Device Manager (Windows) or equivalent to manually update the driver for the unrecognized SATA controller. Point the driver update utility to the driver files on the CD.
5. **Restart System:** After driver installation, restart your computer to ensure all changes take effect.

If you do not have an optical drive, you may be able to download the latest drivers from the Syba official website by searching for model SD-MPE40056.

9. TROUBLESHOOTING

- **Card Not Detected:**

- Ensure the card is fully seated in the Mini PCIe slot.
- Verify that the Mini PCIe slot is enabled in your system's BIOS/UEFI settings (e.g., if it shares resources with a wireless card slot).
- Confirm it's a Mini PCIe slot, not a standard PCIe slot.
- Check for any known compatibility issues with your specific motherboard model (some Intel D525 platforms, for example, may require specific pin modifications or BIOS updates).

- **SATA Drives Not Recognized:**

- Ensure SATA data and power cables are securely connected to both the card and the drives.
- Verify that the drives themselves are functional.
- Install the correct drivers for the controller card (refer to Section 8).
- Check your system's BIOS/UEFI settings to ensure SATA controllers are enabled.
- For new drives, ensure they are initialized, partitioned, and formatted in your operating system's Disk Management utility.

- **Slow Performance:**

- Ensure you are using SATA 3.0 compatible drives and cables.
- Verify that the correct drivers are installed and functioning.
- Check for other system bottlenecks (e.g., CPU usage, RAM).

- **Physical Fit Issues (e.g., in laptops):**

- The card's SATA ports may be too tall for some compact laptop chassis. Ensure adequate clearance before attempting to close the case.
- Consider using low-profile or L-shaped SATA cables if space is extremely limited.

10. SPECIFICATIONS

Model Number	SD-MPE40056
Brand	Syba

Chipset	AsMedia ASM1061
Interface	Mini PCI-Express 2.0 (1-Lane)
SATA Ports	2 x SATA III (6Gbps)
Data Transfer Rate	Up to 6Gbps per port
Operating Systems	Windows, macOS, Linux
Dimensions (LxWxH)	5.6 x 4.4 x 1.2 inches (Product Dimensions) / Approx. 2 x 1.2 inches (Card dimensions)
Item Weight	2.4 ounces
Hardware Interface	PCI Express x1
Compatible Devices	Desktop (systems with Mini PCIe slots)

11. MAINTENANCE

The Syba SD-MPE40056 controller card is a low-maintenance component. To ensure its longevity and optimal performance:

- **Keep Clean:** Periodically clean the interior of your computer case to prevent dust buildup on the card and other components, which can lead to overheating. Use compressed air for this purpose.
- **Proper Handling:** Always handle the card by its edges to avoid touching the components or gold contacts. Static electricity can damage electronic components.
- **Secure Installation:** Ensure the card remains securely fastened in its slot to prevent intermittent connections.
- **Software Updates:** Keep your operating system and drivers updated to benefit from performance improvements and bug fixes.

12. WARRANTY AND SUPPORT

Syba products typically come with a manufacturer's warranty. Based on available information, this product may include a 3-year warranty. Please refer to the warranty information provided with your purchase or visit the official Syba website for the most current and detailed warranty terms and conditions.

For technical support, driver downloads, or further assistance, please visit the Syba official website or contact their customer service department. When contacting support, please have your product model number (SD-MPE40056) and purchase information readily available.