

Yakima 8002465

Yakima FullSwing 4-Bike Hitch Mount Carrier Instruction Manual

Model: 8002465

INTRODUCTION

The Yakima FullSwing 4-Bike Hitch Mount Carrier is designed for secure and convenient transportation of up to four bicycles on vehicles equipped with a 2-inch hitch receiver. Its unique swing-away design allows for easy access to your vehicle's rear cargo area, even when fully loaded with bikes. This manual provides essential information for the proper setup, operation, and maintenance of your FullSwing carrier to ensure safe and reliable use.



Image: The Yakima FullSwing 4-Bike Hitch Mount Carrier, showcasing its robust design and capacity.

SAFETY INFORMATION

Always prioritize safety when installing and using your bike carrier. Failure to follow these guidelines may result in property damage, injury, or death.

- **Weight Limits:** Do not exceed the maximum total weight capacity of 150 lbs (68 kg) or 40 lbs (18 kg) per bike. Ensure your vehicle's hitch receiver can support this weight.

- **Hitch Compatibility:** This carrier is designed exclusively for 2-inch hitch receivers. Do not attempt to install on other hitch sizes.
- **Secure Installation:** Always ensure the SpeedKnob is fully tightened and locked, and the AutoPin feature is engaged, before driving.
- **Bike Security:** Use all provided ZipStrips and the integrated locking cable to secure bikes firmly to the rack. Bikes should not sway or make contact with each other or the vehicle during transport.
- **Clearance:** Verify adequate ground clearance and rear vehicle clearance, especially when using the swing-away feature or driving over uneven terrain.
- **Proposition 65 Warning:** This product may expose you to chemicals known to the State of California to cause cancer and birth defects or other reproductive harm. For more information, go to www.P65Warnings.ca.gov.

SETUP

Follow these steps for quick and secure installation of your Yakima FullSwing carrier.

1. **Prepare Hitch Piece:** Before inserting, ensure the internal wedge mechanism on the hitch piece is flush. If it's extended, gently push it back until it's even with the end of the hitch bar.
2. **Insert into Hitch Receiver:** Slide the hitch piece into your vehicle's 2-inch hitch receiver. Push it in until you hear the AutoPin click, indicating it has automatically positioned and locked the rack.
3. **Install Mast Hardware:** Align the mast hardware with the hitch piece. Drop the included bolt into the designated hole and tighten the nut using the provided wrench/bottle opener.
4. **Tighten SpeedKnob:** Rotate the large red SpeedKnob clockwise until the rack is firmly secured and there is no wobble.
5. **Lock SpeedKnob:** Insert the key into the SpeedKnob lock and turn it clockwise to lock the rack to your vehicle. Remove the key.
6. **Safety Pin:** Insert the red safety pin through the hole on the hitch piece for added security.

For a visual guide on installation, please refer to the official product video below:

Video: Official Yakima FullSwing Premium Hitch Bike Rack installation and feature overview. This video demonstrates the tool-free setup, AutoPin, SpeedKnob, and swing-away functionality.



Same Key System (SKS) to unlock all your Yakima products

Image: Detail of the SpeedKnob and integrated lock on the Yakima FullSwing, ensuring secure attachment to the vehicle.

OPERATING THE RACK

Learn how to load your bikes and utilize the convenient swing-away feature.

Loading Bikes

1. **Extend Arms:** Release the red trigger finger lever at the top of the mast to extend the fully padded arms.
2. **Load Bikes:** Load bikes onto the carrier, starting with the heaviest bike closest to the vehicle. The rack accommodates a wide range of bicycle styles and sizes. Bikes with non-traditional geometry may require a top tube adapter (sold separately).
3. **Secure with ZipStrips:** Use the zero-hassle ZipStrips to secure each bike to the rack. Ensure bikes are stable and do not move excessively.
4. **Integrated Lock:** Extend the integrated locking cable over the bike frames and lock it into place using your key. This provides additional security for your bikes.



Holds up to 4 bikes

Image: The Yakima FullSwing 4-Bike Hitch Mount Carrier securely holding four bicycles, ready for transport.

Using the Swing-Away Feature

The swing-away design allows for effortless access to your vehicle's rear cargo area.

1. **Loosen Safety Knob:** Locate the safety knob near the base of the mast and loosen it.
2. **Pull Red Pin:** Pull the red pin located on the swing-away mechanism.
3. **Rotate Mast:** Gently rotate the mast, with bikes loaded, away from your vehicle until it clicks into the open position (approximately 90 degrees). This provides full access to your trunk or tailgate.
4. **Return to Driving Position:** To return the rack, press the red hinge lever down, rotate the mast back towards the vehicle until the red pin clicks into place, and then tighten the safety knob.



Swings away from vehicle with bikes loaded with just one touch

Image: The Yakima FullSwing rack swung away from a vehicle, providing clear access to the rear hatch even with bikes attached.

MAINTENANCE

Regular maintenance ensures the longevity and safe operation of your Yakima FullSwing carrier.

- **Cleaning:** Clean the carrier regularly with mild soap and water, especially after exposure to dirt, salt, or harsh weather conditions. Rinse thoroughly and dry.
- **Lubrication:** Periodically apply a silicone-based lubricant to moving parts, such as the swing-away hinge and the SpeedKnob mechanism, to ensure smooth operation.
- **Inspect Fasteners:** Before each use, check all bolts, nuts, and straps for tightness and wear. Replace any worn or damaged components immediately.
- **Storage:** When not in use, store the carrier in a dry, protected area to prevent corrosion and damage. The rack folds down compactly for storage.

TROUBLESHOOTING

Common issues and their potential solutions:

Issue	Possible Cause	Solution
Rack does not fit into hitch receiver.	Internal wedge mechanism is extended; incorrect hitch size.	Ensure wedge is flush before insertion. Verify your vehicle has a 2-inch hitch receiver.
Bikes are not secure or sway during transport.	ZipStrips not tight; integrated cable not used; improper bike loading.	Ensure ZipStrips are ratcheted down firmly. Always use the integrated locking cable. Load heaviest bikes first and distribute weight evenly.
Swing-away mechanism is stiff or difficult to operate.	Lack of lubrication; dirt/debris in hinge.	Clean the hinge area and apply silicone-based lubricant. Ensure safety knob is fully loosened and red pin is pulled.
Key does not turn in lock.	Lock mechanism is jammed or dirty.	Apply a small amount of graphite lubricant to the keyhole. Ensure the SpeedKnob is fully tightened before attempting to lock.

SPECIFICATIONS

Feature	Detail
Model Name	FullSwing 4 (8002465)
Capacity	4 Bicycles
Max Bike Weight	40 lbs (18 kg) per bike
Max Total Load Capacity	150 lbs (68 kg)
Mounting Type	Hitch Mount (2-inch receiver only)
Color	Black
Dimensions (L x W x H)	43.5 x 26 x 17.5 inches (folded)
Weight	Approx. 56 lbs (25.4 kg)
Integrated Locks	SpeedKnob lock, Integrated cable lock (SKS compatible)

Image: Diagram illustrating bike compatibility and weight limits for the Yakima FullSwing rack.



Fits any bike with traditional geometry
(other bikes may require
a top tube adapter)

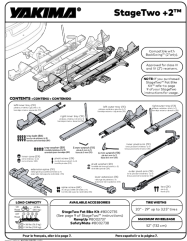
Maximum bike weight 40 lbs. each
(total weight should not exceed 150 lbs.)
2" hitch receiver required

WARRANTY AND SUPPORT

Yakima is committed to providing high-quality products and excellent customer service. For specific warranty information regarding your FullSwing 4-Bike Hitch Mount Carrier, please refer to the warranty documentation included with your purchase or visit the official Yakima website.

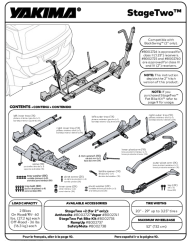
For technical support, troubleshooting assistance, or to inquire about replacement parts, please contact Yakima Customer Support through their official website or the contact information provided in your product packaging. Yakima's Same Key System (SKS) allows you to use a single key for all your Yakima products, enhancing convenience and security.

© 2024 Yakima. All rights reserved.



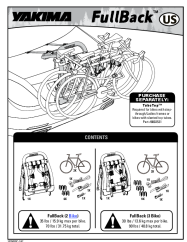
[Yakima StageTwo +2™ Hitch Bike Rack: Installation and User Guide](#)

Comprehensive guide for installing and using the Yakima StageTwo +2 hitch-mounted bicycle rack. Includes parts list, load capacity, installation steps, safety checks, and important warnings.



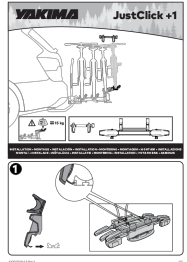
[Yakima StageTwo Hitch Mount Bike Rack Installation and Use Guide](#)

Comprehensive guide for installing, loading, and using the Yakima StageTwo hitch mount bike rack. Includes safety checks, maintenance, and optional adjustments for optimal bike transport.



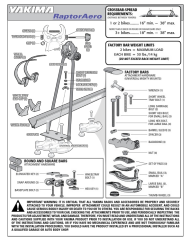
[Yakima FullBack Bike Rack Installation and User Guide](#)

Comprehensive guide for installing, loading, and removing the Yakima FullBack bike rack. Includes safety warnings, weight limits, and vehicle compatibility notes for secure bicycle transport.



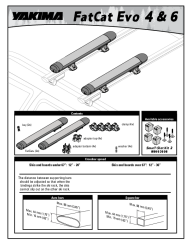
[Yakima JustClick +1 Bike Rack Installation Guide](#)

Step-by-step installation instructions for the Yakima JustClick +1 bike rack, including weight limits and important safety information. Learn how to securely attach your bikes.



[Yakima RaptorAero Bike Rack Installation Guide](#)

Comprehensive installation instructions for the Yakima RaptorAero bike rack, covering setup for various crossbar types, bike loading, securing, and maintenance.



[Yakima FatCat Evo 4 & 6 Ski and Snowboard Rack Installation Guide](#)

Comprehensive instructions for installing and using the Yakima FatCat Evo 4 and 6 ski and snowboard racks, including loading, unloading, and maintenance.