

## Kohler K-12265-4-2BZ

# Kohler K-12265-4-2BZ Fairfax Widespread Bathroom Sink Faucet Instruction Manual

*Model: K-12265-4-2BZ*

For detailed information on your Kohler Fairfax Faucet.

## INTRODUCTION

This manual provides essential information for the installation, operation, and maintenance of your Kohler K-12265-4-2BZ Fairfax Widespread Bathroom Sink Faucet. Please read these instructions thoroughly before beginning installation or use to ensure proper function and longevity of the product.

The Kohler Fairfax faucet combines timeless elegance with functional design, featuring sculpted ergonomic lever handles and an oil-rubbed bronze finish. It is designed for widespread bathroom sink applications.

## IMPORTANT SAFETY INFORMATION

- Always turn off the water supply before beginning any work on the faucet.
- Wear appropriate personal protective equipment, such as safety glasses, during installation.
- If you are unsure about any part of the installation process, consult a qualified plumber.
- Ensure all local plumbing and building codes are followed.

## PACKAGE CONTENTS

Verify that all components are present before beginning installation:

- Faucet Spout Assembly
- Hot and Cold Lever Handles
- Drain Assembly
- Mounting Hardware
- Installation Guide (separate document for detailed steps)



Figure 1: Overview of the Kohler K-12265-4-2BZ Fairfax Widespread Bathroom Sink Faucet in Oil-Rubbed Bronze.

## SETUP AND INSTALLATION

The Kohler K-12265-4-2BZ Fairfax faucet is designed for widespread installation on 8-inch to 16-inch centers, requiring three holes in the sink or countertop. This section provides a general overview; refer to the separate detailed installation guide for step-by-step instructions.

1. **Prepare the Installation Area:** Ensure the water supply is turned off and the old faucet (if any) is removed. Clean the mounting surface.
2. **Mount the Faucet Components:** Install the hot and cold valve assemblies and the spout assembly into the pre-drilled holes on your sink or countertop. Secure them from underneath with the provided mounting hardware.
3. **Connect Water Supply Lines:** Attach the hot and cold water supply lines to the corresponding valve assemblies. Ensure all connections are tight to prevent leaks.
4. **Install the Drain Assembly:** Follow the instructions for installing the pop-up drain. Ensure a watertight seal.
5. **Test for Leaks:** Slowly turn on the water supply and check all connections for leaks. Operate the faucet to ensure proper function.

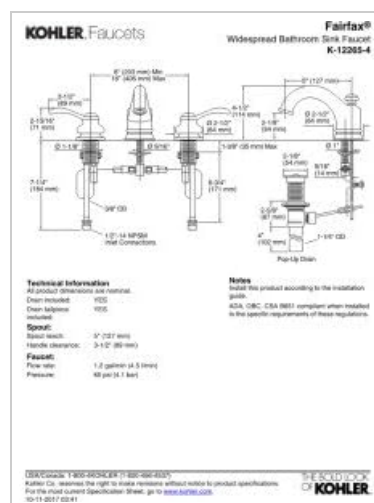


Figure 2: Technical drawing illustrating the dimensions and components of the Kohler Fairfax Widespread Bathroom Sink Faucet (K-12265-4 model shown, similar to K-12265-4-2BZ).

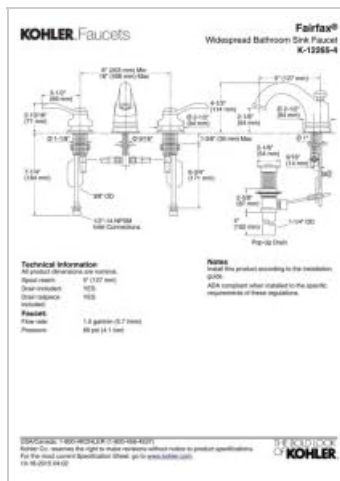


Figure 3: Detailed technical drawing with installation notes for the Kohler Fairfax Widespread Bathroom Sink Faucet (K-12265-4 model shown, similar to K-12265-4-2BZ).

## OPERATING INSTRUCTIONS

Your Kohler Fairfax faucet features two lever handles for precise control over water temperature and flow.

- **Water Flow:** Turn the handles counter-clockwise to increase water flow and clockwise to decrease or shut off.
- **Temperature Control:** The left handle controls hot water, and the right handle controls cold water. Adjust both handles to achieve your desired water temperature.
- **Drain Operation:** The faucet includes a pop-up drain. Use the lift rod located behind the spout to open and close the drain.

## CARE AND MAINTENANCE

To maintain the oil-rubbed bronze finish and ensure the longevity of your Kohler faucet, follow these care instructions:

- **Regular Cleaning:** Clean the faucet regularly with a soft, damp cloth and mild soap. Avoid abrasive cleaners, harsh chemicals, or scouring pads, as these can damage the finish.
- **Drying:** Always dry the faucet thoroughly after cleaning to prevent water spots and mineral buildup.
- **Avoid Wax-Based Cleaners:** Do not use cleaners containing wax, as they can dull the finish over time.
- **Aerator Maintenance:** If water flow decreases, the aerator may be clogged. Unscrew the aerator from the spout, clean any debris, and reattach.

## TROUBLESHOOTING

Problem	Possible Cause	Solution
Low Water Flow	Clogged aerator; partially closed shut-off valves.	Clean or replace aerator; ensure shut-off valves are fully open.
Leaking from Spout	Worn O-rings or seals; loose connections.	Replace O-rings/seals; tighten connections.
Leaking from Handle Base	Loose packing nut; worn cartridge.	Tighten packing nut; replace cartridge.

For issues not listed here or if solutions do not resolve the problem, contact Kohler customer service or a qualified plumber.

## SPECIFICATIONS

Feature	Detail
Brand	Kohler
Model Number	K-12265-4-2BZ
Recommended Uses	Bathroom
Mounting Type	Deck Mount
Finish Type	Oil Rubbed Bronze
Material	Metal
Number of Handles	2
Included Components	Drain
Hole Count	3
Special Features	Easy to Install, Pop Up Drain, Lead Free, Rust Resistant
Style	Widespread
Installation Type	Widespread
Maximum Flow Rate	1.2 Gallons Per Minute
Spout Height	2.13 Inches
Spout Reach	5 Inches
Item Weight	5 Pounds
Product Dimensions	20.25 x 13.5 x 3.25 inches

## WARRANTY AND SUPPORT

This Kohler faucet comes with a limited warranty. For specific warranty details, registration, or to obtain service, please refer to the warranty card included with your product or visit the official Kohler website. Keep your proof of purchase for warranty claims.

For technical assistance or replacement parts, contact Kohler customer service:

- **Website:** [www.kohler.com](http://www.kohler.com)
- **Phone:** Refer to your product documentation for regional contact numbers.

