

## Estes 2435

# Estes 2435 3 Bandits Model Rocket Kit Instruction Manual

Model: 2435 | Brand: Estes

## 1. INTRODUCTION

This instruction manual provides detailed guidance for assembling, preparing, and launching your Estes 2435 3 Bandits Model Rocket Kit. Designed for beginners aged 10 and up (with adult supervision recommended for those under 12), this kit allows you to build and launch three mini-engine-powered rockets. Please read all instructions carefully before beginning assembly or launch operations to ensure a safe and successful experience.

## 2. WHAT'S INCLUDED

Your Estes 2435 3 Bandits Model Rocket Kit includes the following components for three rockets:

- 3 Rocket Kits (including nose cones, body tubes, fins, and recovery parachutes)
- Design Decals
- Instruction Sheet

**Note:** Additional items required for assembly and launch are sold separately. Refer to Section 3 and 4 for details.



# WHAT'S INCLUDED

★ 3 Bandits rocket kits



Length

10.8-11.1"  
(27.4-28.2 cm)

Diameter

0.74" (19 mm)

Weight

0.6-0.71 oz.  
(17-20.1 g)

10-minute assembly time (not including dry time)

**Figure 2.1:** Included Components and Dimensions. Each rocket measures approximately 10.8-11.1 inches in length and 0.74 inches in diameter, weighing 0.6-0.71 oz.

## 3. ASSEMBLY INSTRUCTIONS

The 3 Bandits rockets are designed for quick and easy assembly, with an estimated time of 10 minutes per rocket. Follow the detailed instructions provided in your kit for specific steps. General tools and materials required for assembly include:

- Scissors
- Carpenter's Glue
- Plastic Cement

Ensure all parts are securely attached and dry before proceeding to launch preparation.



Figure 3.1: Tools and Materials for Assembly.

## 4. PREPARING FOR LAUNCH

Before launching your Estes 3 Bandits rockets, you will need several additional items, sold separately:

- Estes Model Rocket Engines (e.g., 1/2A3-4T, A3-4T, A10-3T)
- Starters (Igniters)
- Recovery Wadding
- Estes Porta-Pad II Launch Pad
- Estes Electron Beam Launch Controller
- 4 high-quality 1.5-volt AA alkaline batteries (for launch controller)

### 4.1. Engine Selection

Estes model rocket engines are assigned a letter indicating their power level. For beginner rockets like the 3 Bandits, engines starting with the letter 'A' (e.g., 1/2A3-4T, A3-4T, A10-3T) are generally the best choice. Always refer to your rocket's specific instructions for recommended engine types to ensure optimal performance and safety.

## 4.2. Recovery Wadding

Recovery wadding is crucial for protecting the recovery parachute from the hot ejection charge of the engine. Insert several sheets of wadding into the body tube above the engine before packing the parachute. Use new wadding for each flight.

Your browser does not support the video tag.

**Video 4.1:** Estes Rocket Launch Sets by Estes Info Bot. This video provides an overview of different rocket types, engine selection, and the importance of recovery wadding for safe launches.

## 5. LAUNCH PROCEDURE

---

Always conduct launches in an open area, away from buildings, power lines, and dry brush. Ensure weather conditions are suitable (low wind, clear skies).

1. **Set up Launch Pad:** Assemble the Estes Porta-Pad II Launch Pad according to its instructions. Place it on a flat, stable surface.
2. **Prepare Rocket:** Insert the prepared engine with a starter and recovery wadding into the rocket. Carefully fold and insert the parachute.
3. **Place Rocket on Pad:** Slide the rocket onto the launch rod of the Porta-Pad II.
4. **Connect Launch Controller:** Connect the lead clips from the Electron Beam Launch Controller to the starter wires on the rocket. Ensure a secure connection.
5. **Clear Launch Area:** Ensure all spectators and personnel are at least 15 feet away from the launch pad.
6. **Insert Safety Key:** Insert the safety key into the launch controller.
7. **Initiate Countdown:** Begin a verbal countdown (e.g., "5, 4, 3, 2, 1, Launch!").
8. **Launch:** Press and hold the launch button until the rocket ignites and lifts off.
9. **Recovery:** Observe the rocket's flight and recovery. Retrieve the rocket for future launches.





**BEGINNER**

Ages 10+



## 3 BANDITS LAUNCH SET

Get ready for a thrilling heist with these 3 bandits model rockets! Equipped with mini engines and easy-to-assemble designs, these bandits are sneaky, fast, and won't let gravity hold them back.



Figure 5.1: Estes 3 Bandits Launch Set, showcasing the rockets.

## 6. MAINTENANCE AND STORAGE

- After each flight, inspect your rocket for any damage to the fins, nose cone, or body tube. Repair as needed with appropriate adhesives.
- Ensure the recovery parachute is clean and free of tears.
- Store rockets and engines in a cool, dry place, away from direct sunlight and extreme temperatures.
- Keep launch controllers and pads clean and free of debris.

## 7. TROUBLESHOOTING

- **Rocket Fails to Launch:**
  - Check battery level in launch controller.
  - Ensure starter wires are securely connected to the lead clips.
  - Verify the safety key is fully inserted.
  - Inspect the starter for damage.

- **Parachute Fails to Deploy:**
  - Ensure sufficient recovery wadding was used to protect the parachute.
  - Check for obstructions in the body tube.
  - Verify the engine's ejection charge fired correctly.
- **Erratic Flight Path:**
  - Ensure fins are securely attached and aligned.
  - Verify the launch rod is straight and the rocket slides freely.
  - Check for proper engine selection for the rocket model.

## 8. SAFETY GUIDELINES

Model rocketry is a safe and enjoyable hobby when proper safety procedures are followed. Always adhere to the National Association of Rocketry (NAR) Model Rocket Safety Code. Key safety points include:

- **Adult Supervision:** Children under 12 years of age should always be supervised by an adult.
- **Launch Site:** Use a large, open area free from obstacles, dry vegetation, and people.
- **Weather Conditions:** Do not launch in high winds, during thunderstorms, or near clouds.
- **Safe Distance:** Maintain a safe distance of at least 15 feet from the launch pad during countdown and launch.
- **Engine Use:** Only use Estes-approved model rocket engines for your specific rocket model.
- **Recovery:** Always use recovery wadding and a parachute to ensure safe descent.
- **Igniter Safety:** Never attempt to launch a rocket with a damaged or improperly installed igniter.

## 9. SPECIFICATIONS

| Feature                     | Detail                                                |
|-----------------------------|-------------------------------------------------------|
| Model Name                  | 2435 3 Bandits Model Rockets Kit, E2X, (3 Rockets)    |
| Brand                       | Estes                                                 |
| Item Model Number           | 2435                                                  |
| Recommended Age             | 10 years and up (with adult supervision for under 12) |
| Number of Pieces            | 3 (rockets)                                           |
| Material                    | Plastic                                               |
| Item Dimensions (L x W x H) | 11.1 x 0.74 x 11.1 inches (packaging)                 |
| Rocket Length               | 10.8-11.1 inches (27.4-28.2 cm)                       |
| Rocket Diameter             | 0.74 inches (19 mm)                                   |
| Projected Max Altitude      | 550 ft (168 m) with A10-3T engine                     |
| Recovery System             | 6-inch (15.24 cm) Parachute                           |
| Recommended Engines         | 1/2A3-4T (First Flight), A3-4T, A10-3T                |



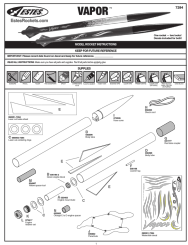
Figure 9.1: Technical Specifications Overview.

## 10. WARRANTY AND SUPPORT

For warranty information, technical support, or to purchase replacement parts and accessories, please visit the official Estes website or contact their customer service department. Keep your purchase receipt as proof of purchase.

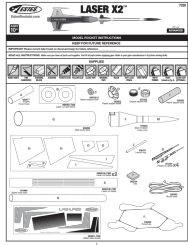
[Visit the Estes Store on Amazon](#)





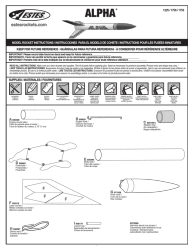
### [Estes Vapor Model Rocket Kit Assembly and Launch Instructions](#)

Comprehensive instructions for assembling, finishing, and launching the Estes Vapor model rocket kit (Model 7294), including parts list, step-by-step assembly, painting guides, and safety precautions.



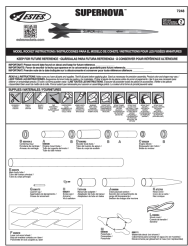
### [Estes Laser X2™ Model Rocket Assembly Instructions \(Model 7320\)](#)

Comprehensive assembly guide for the Estes Laser X2™ model rocket kit (Model 7320). This document provides detailed, step-by-step instructions, a complete parts list, supply requirements, painting and decal application guidance, and essential launch and safety procedures.



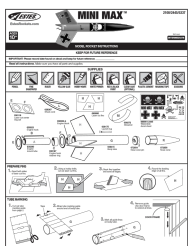
### [Estes Alpha Model Rocket Instructions - Assembly and Launch Guide](#)

Comprehensive assembly and launch instructions for the Estes Alpha model rocket (Models 1225, 1756, 1753). Includes parts list, step-by-step building guide, finishing tips, recovery system preparation, engine setup, launch procedure, and safety precautions.



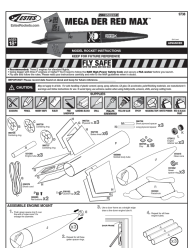
### [Estes Super Nova Model Rocket Assembly Instructions](#)

Detailed instructions for assembling the Estes Super Nova model rocket, including parts lists, step-by-step guides, and safety precautions.



### [Estes Mini Max Model Rocket Instructions: Assembly and Launch Guide](#)

Comprehensive instructions for assembling and launching the Estes Mini Max model rocket. Includes parts list, step-by-step assembly, finishing tips, and safety precautions.



### [Estes Mega Der Red Max 9738 Model Rocket Assembly and Launch Instructions](#)

Comprehensive guide for assembling and launching the Estes Pro Series II Mega Der Red Max 9738 model rocket. Includes detailed steps, parts list, safety precautions, and flight preparation.